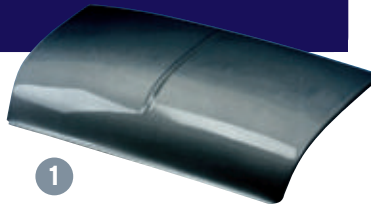




Bonnets



1. a. 1971 on with grill moulding support lip. Non Genuine **MSL2**
 b. MK1 1960-67 No grill moulding support lip
 Genuine **24A1182**
 c. MK2 1967-69 with grill moulding support lip. Genuine. **ALA7455**
 d. MK3 1971 on No grill moulding support lip. (Van/Pickup)
 Genuine **ALA8430**
 e. MK3 1971 on with grill moulding support lip. Genuine .. **CZH455**
 f. MK7 1997 on for front mounted radiator. Genuine .. **BKA360070**
 g. MK7 1997 on Japan only **BKA360110**

From approx. 1971 bonnets had hinges fitted direct to corners with fixing area 1.25" inboard. MK1/2 & early MK3 had the hinges approx. 6" inboard.

Bonnet Fittings



2. Spring loaded bracket, bolts to original hinge and acts as safe auxiliary bonnet prop **MSSK018**
3. Internal bonnet lock. The safest bonnet lock is an internal release type, as fitted to all the late Minis. The kit includes a new catch with bolts, correct length cable and bracket to fit at the end of the parcel shelf. (Not Clubman) **GS130273**
4. Quick release bonnet hinges for standard metal bonnet. Pair of MK3 bonnet hinges made for quick release to remove whole bonnet making it easier when working on the engine **MSSK019**
5. Gas bonnet lifting strut kit. Eliminates need for standard prop making engine access easier **MSA5000**

Boot Hinges



6. a. Pair of chromed bootlid hinges **8B12601**
 b. Pair of bootlid hinges non genuine **8B12602**
 c. Pair of Rover bootlid hinges genuine **HMP441031**
7. a. Rover replacement R/H hinge **BMB360040**
 b. Rover replacement L/H hinge **BMB360050**
8. a. Lower gasket for hinge to body. Order Individually ... **24A2176**
 b. Upper gasket for hinge to bootlid. Order Individually .. **24A2175**

Grommets

Grommets with center hole for wiring and control cables etc.

9. a. Grommet, 1/8" center hole 1/2" wide and fits 11/32" hole, choke cable through body. . . **CAM5969**
 b. Grommet, 7/32" center hole 1/4" wide and fits 1" hole **5L23**
 c. Grommet, 1/8" center hole 1" wide and fits a 3/4" hole, boot floor, rear valance **14A7033**
 d. Grommet, 5/32" center hole 1 3/8" wide fits 1/4" hole. Also inner wing hole, for side repeater lamp **YML10654**
 e. Grommet, 3/16" center hole 1" wide fits 1/2" hole **RFN403**
 f. Grommet, 1/8" center hole 1 3/32" wide to fit 9/16" hole, bootlid and bulkhead wiring. **RFN303**
10. Door handle seal **ADA3817**
11. Boot handle seal **CZH1747**



Classic Straps and Fixings



12. Over center clips, chrome plated and sold in pairs only. **MS117**
13. Heavy duty bonnet pins 3 1/2" long and 1/2" thick. Pairs only. **C247**
14. Original type leather bonnet strap, thick top grade tan leather, alloy fastening, and sold complete with screws as used by ST Works cars. Order individually **C-AJJ3381**
15. a. Competition quick release stainless steel bonnet pins, 4 1/2" long and 7/16" thick **BSP001**
 b. Competition quick release lightweight alloy bonnet pins, in blue anodised. In pairs only **BSP002**
 c. Competition quick release lightweight alloy bonnet pins, in red anodised. In pairs only **BSP003**
16. Rubber bonnet hook in solid black rubber with fastenings.
 a. Short 2 1/2" in length. In pairs only **MS119**
 b. Long 4 1/2" in length. In pairs only **MS118**
17. Bonnet and boot springs available in pairs only.
 a. In black ... **BS258** b. In chrome **MS122**
18. Black leather bonnet straps available in pairs only. **MS121**
19. Original works quick lift jacking brackets. A pair were fitted on both the front and rear about 12" apart from the center, meaning the car could quickly be raised by quick lift jacks as used by Formula One Teams to this day. Order pair **C-AJJ4005**

Hooks, straps and catches for bonnets, boots or fiberglass front ends

Floor and Body Plugs

20. Inner sill 1 1/4" x 1" rectangular plug for 1" long 1 3/16" hole **AYB10020**
21. Boot plug for fuel lines on injection cars or new shells 3" long oval hole. **WYA10001**
22. Floor plug, 1 5/16" wide. Fits holes just under or over 1" **14A7081**
23. Battery box, rear floor pan, wiper hole plug. 1 1/8" wide Fits 1 3/16" hole **14A7090A**
24. Radius arm shroud, aerial hole and floor, steering column hole plug. 1 1/4" wide. Fits 7/8" hole **14A7091**
25. Plug for hole in flitch, MK1 door, bonnet platform. MK4 later panel. 1 3/16" wide. Fits 1/2" hole **14A7031**
26. Floor plug.
 a. Boot 5/8" wide to fit hole 5/16" **13H1954**
 b. Steering Column **BNP3894**
27. Rear valance fog lamp blanking plug. 1" wide for 5/8" hole **14A7032**
28. Spotlamp bracket front valance plug. Fits 1 1/16" wide Fits 3/8" hole 9.2mm hole ... **ALA4466**
29. Buffer flitch plate (4) luggage strap hole(3) plug. 1/2" wide for 5/16" hole **2H7274**
30. Wiper motor extra square hole in dash white plastic plug **CZG778**
31. Bonnet buffer 1990 on stick on type. **ADU2072**
32. Bonnet buffer MK1/2/3. **14G6856**
33. "B" Post blanking plug 2" square MK3 on. Order individually. ... **CZH628**
34. Boot lid number plate buffer MK1/2. Order individually. **14A7625**

