



# 2011 + Mini Cooper Countryman and Countryman S Trailer Receiver Hitch Installation Instructions

Application ..... M1006 - 2011+ Mini Cooper Countryman and Clubman S

Hitch Capacity .....2000 lbs gross, 200 lb max tongue

Notes: This hitch features a removable ball mount. This hitch is not intended for use as a weight-distributing hitch. Before towing, the hitch pin and retainer clip **MUST** be in place securing the ball mount to the receiver. **These installation instructions are periodically updated. Prior to installation, please check [www.MinidoMore.com](http://www.MinidoMore.com) for the latest version of these installation instructions.**

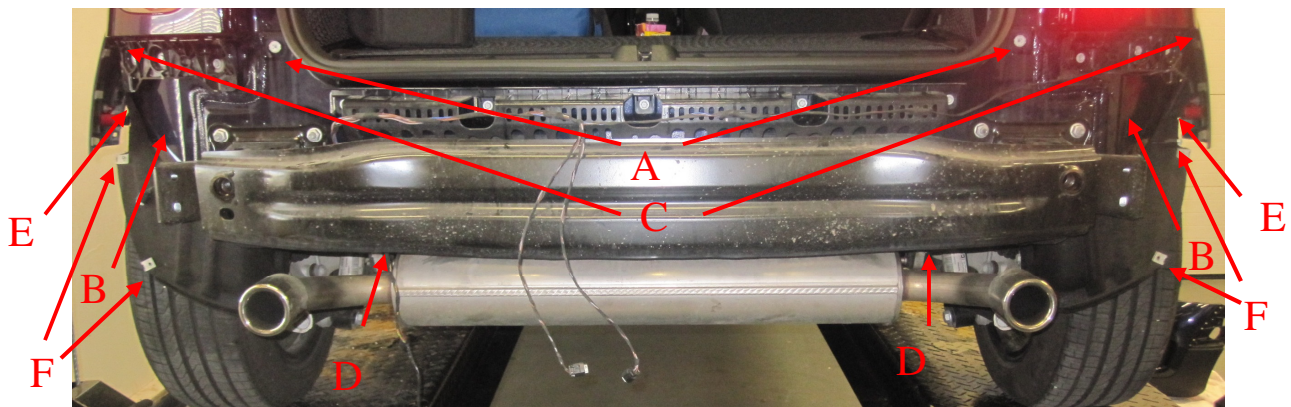
The tools you will need are:

- #2 Phillips and #2 Stubby Phillips Screwdriver
- #2 Long Regular Screwdriver
- T-20 Torx Screwdriver
- Torque Wrench
- 17mm, 10mm, and 5/16" Socket
- 10mm Wrench
- Ratchet and Socket Extension
- 3/8" Electric or Cordless Drill
- 2" or 2 1/2" Hole Saw with pilot bit
- Universal Swivel Socket
- Pencil Exacto Knife
- Coping Saw, Dremmel, Rotozip, or Jig Saw

## Step 1: Removing the bumper

The MINI Cooper Countryman and Countryman S stock bumper is attached the car with twenty fasteners. Sixteen are easy to access. They are labeled in the photos below and there are A=2, B=4, C=2, D=4, E=4, and F=4 quantities

In the next three pictures, the fastener locations are labeled.

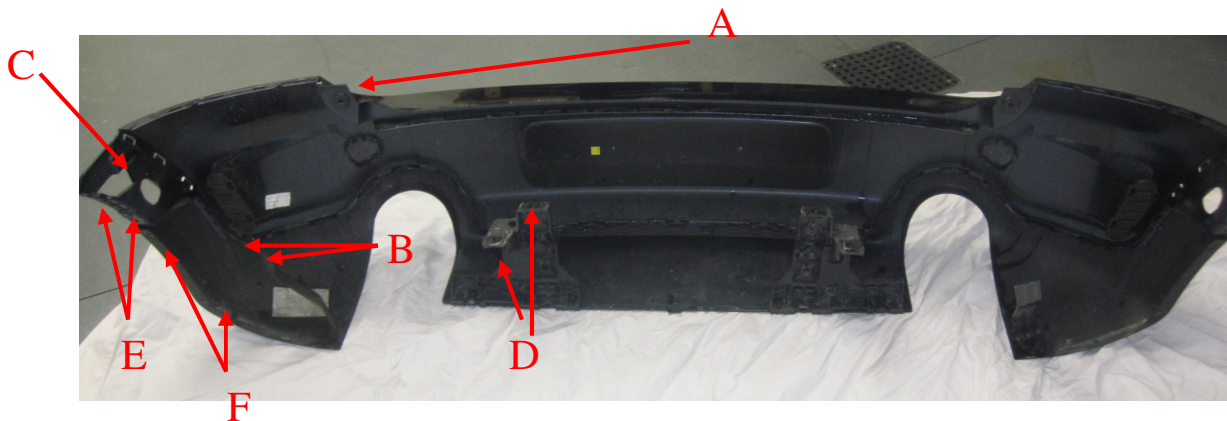


Picture 1 – Rear Bumper Off (same locations for Cooper Countryman and Countryman S, this is a Countryman S AWD)

## 2011 + Mini Cooper Countryman and Countryman S Trailer Receiver Hitch Installation Instructions



Picture 2 – Fastener C Under Rear Fender Flair



Picture 3 – Rear Bumper

Using the 10mm socket, remove the two fasteners A in two locations from the top of the bumper under the hatch.

Next, from under the car, you will need to disconnect the inner rear wheel liner from the rear bumper at the bottom passenger inside rear. This location is shown in Picture 4. With the pencil Exacto knife, you will need to cut away the inside flap of the inner liner to allow it to release from the sandwich of the rear bumper, inner liner, and metal rear bumper support. The fastener here is a permanent plastic rivet. It cannot be removed. When the hitch has been installed, the bumper will be reinstalled and this flap slid back into its sandwich position.

Repeat for driver side.

## 2011 + Mini Cooper Countryman and Countryman S Trailer Receiver Hitch Installation Instructions



Picture 4 – Trimming the inner liner from the sandwich of the bumper, inner liner, and metal bumper support.

Using the 10mm socket with a long extension, remove the 4 nuts in the D location. This is under the car and above the muffler as shown in Picture 5.



Picture 5 – Above Exhaust Fasteners D, 4 total



## 2011 + Mini Cooper Countryman and Countryman S Trailer Receiver Hitch Installation Instructions

Next, with the 5/16" socket, remove four F fasteners, two on each side. These are accessed from inside the rear fender well as shown in Picture 6. Repeat on the other side of the car.



Picture 6 – Inside Rear Fender Well

The next four nuts are behind the rear fender liner in Fastener B location. They can be accessed by peeling the liner away from the plastic bumper and reaching inside with a ratchet, extension, universal swivel, and 10 mm socket. There are two on each side. They connect a metal support from the bottom of the bumper to the body of the Countryman. This is shown in Picture 7



Picture 7 – Behind the inner rear fender liner



## 2011 + Mini Cooper Countryman and Countryman S Trailer Receiver Hitch Installation Instructions

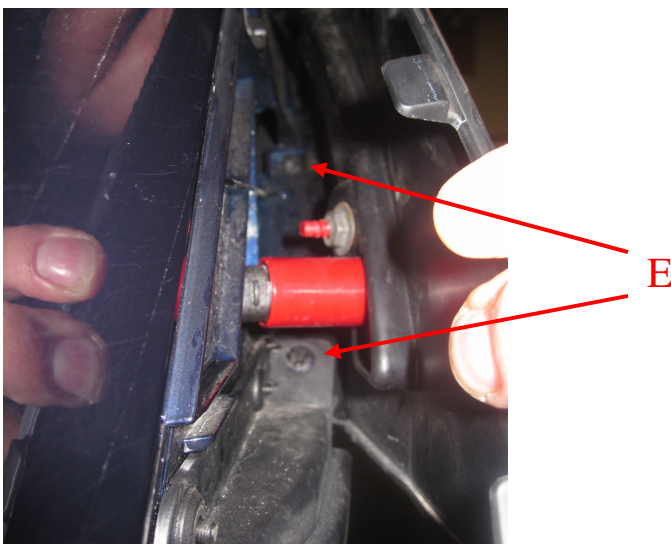
The remaining six fasteners, 3 on each side, are located under the rear fender flair that is attached to the body and bumper, as shown in Picture 3. Using one hand, fish up behind the fender liner at the bottom seam of the wheel arch and rear bumper arch until you can feel the lowest tab. Push on the bumper towards the front of the car while pushing on the inner tab. This will free the lowest tab. Repeat for second tab above lowest tab. Then, pull hand out from under fender liner. Use hand now to pry the arch away from the bumper to free the top third clip. Reach behind the black plastic fender flair again and pop out the two bottom tabs, releasing the bottom of the flair from the bumper as shown in Picture 8 below.



Picture 8 – Accessing hidden fasteners – This photo is of a Clubman, but the process is the same

Once loose, disconnect the wiring from the side marker light and push behind the bumper cover.

There are two plastic two piece connectors that hold the bumper to the rear fender flare. These are Fasteners E in the Picture 3 above. They are above the 5/16 screws removed earlier from the inner wheel liner. See Picture 9 below.



Picture 9 – Accessing the Fasteners E



## 2011 + Mini Cooper Countryman and Countryman S Trailer Receiver Hitch Installation Instructions

Using a #2 Long Handle Regular screwdriver, push out the center pins of the two piece connector from the back side of the rear fender flare on the passenger side of the car. Placing the flat screwdriver into the back center of the connector and pushing forward will push the center pin out. When the center has been pushed toward the front of the car, the connector can then be removed from the fender flare. Repeat for the driver side.

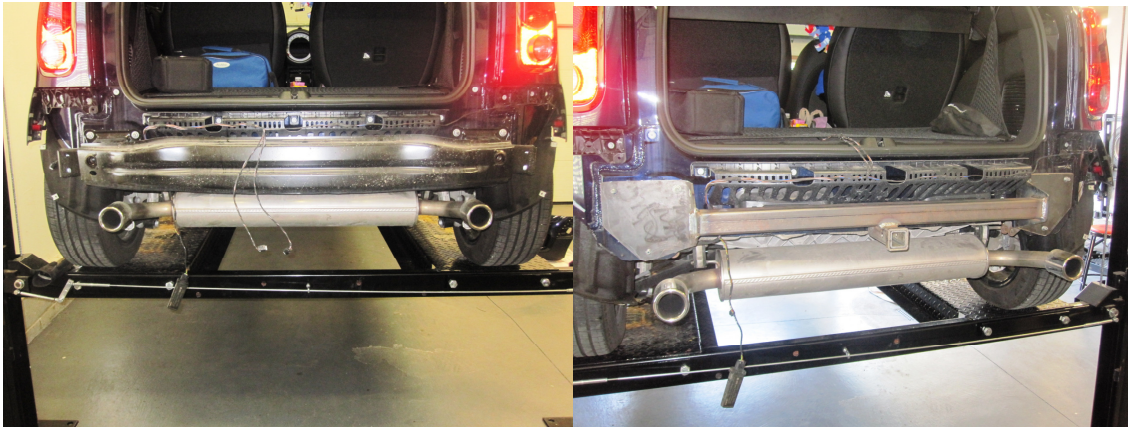
Use a 10 mm wrench, remove the last remaining screw, Fastener C as shown in Picture 2 above. Repeat for the other side.

Your bumper cover is now basically free from the car. Pulling back on each side will release a clip which will “pop” (this is normal) and the bumper can be removed from the back of the car. The bumper will still be connected via wiring harnesses. You now need a box or something to place the bumper on. This box can help hold the bumper cover in place until the two license plate light connectors and the rear sensor wires are disconnected (use a cloth between the bumper and box to help eliminate any scratches). If your car is equipped with backup sensors, also disconnect those.

Congratulations! Your bumper should be totally free from the car now and you should be ready to install the hitch.

### Step 2: Hitch Installation

General Fit: This hitch mounts behind the steel substructure behind the bumper cover using the original bumper mounting bolts. The steel substructure is reinstalled over top of the hitch.



Remove the six 17mm bolts holding the steel bumper substructure to the car.

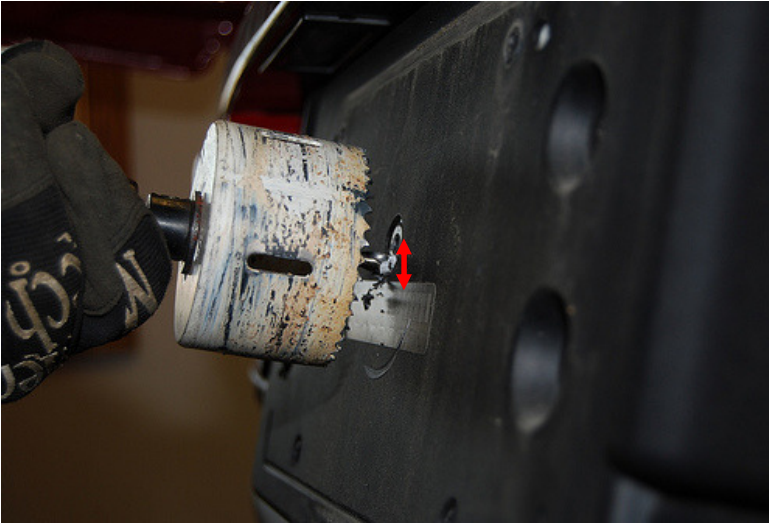
Lift hitch into position. Install the new hitch plate in its place behind the steel substructure. Use the six 17mm nuts to install the hitch and aluminum substructure back to the car. Torque to 22 foot lbs.

An access hole will now need to be drilled using a 2 or 2 ½” hole saw and electric drill. This hole is drilled behind the license plate and is drilled through the license plate holder, the rear bumper cover **and** the steel substructure. First, with the bumper cover still off the car, you will drill through both the bumper cover and the license plate holder.



## 2011 + Mini Cooper Countryman and Countryman S Trailer Receiver Hitch Installation Instructions

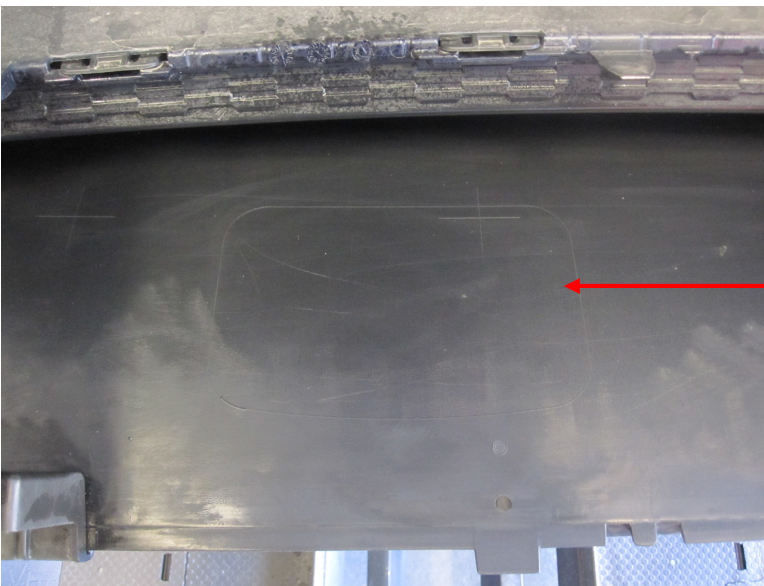
First, remove the license plate. Then, using the dimple in the center of the license plate holder as a reference, make a mark 7/8" directly below that dimple. At that mark, drill through the license plate holder and the rear bumper. **It is easier to drill through the bumper cover and license plate holder while it is removed from the vehicle.**



Drill 7/8"  
down from  
center of  
dimple

***Remember, when the hitch is not in use, the license plate will cover this hole!!***

The Countryman has a large plastic under tray that prevents access to the back side of the bumper from the bottom of the car. An access hole will need to be cut to allow the pin to be installed in the hitch. With the bumper still off the car, use an exacto knife, a coping saw, a Dremmel, a Rotozip, or a Jig Saw to cut a rectangle hole using the raised outline on the inside of the cover.



See the raised outline  
from the inside of the  
bumper cover? Follow  
that to cut an access  
hole.



## 2011 + Mini Cooper Countryman and Countryman S Trailer Receiver Hitch Installation Instructions

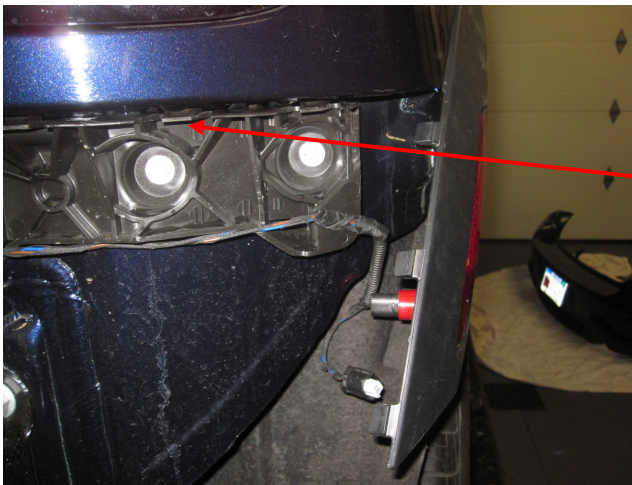
The bumper cover is now ready to be reinstalled on the back of the car

### **Step 3: Reinstall the rear bumper**

This is really just the reverse of the removal directions with these helpful hints.

Attach the license plate light connectors, the rear sensor connector, and backup sensors connectors (if equipped) to the wiring harness.

When hanging the bumper on the car, there is a major height locator for the bumper. This is shown in Pictures 13.



Picture 13 –Alignment Feature

The bumper rests on the center alignment feature. Push in to the alignment feature until you hear a click from both sides of the car.

Screw in two fastener C screws under the side flairs. Then, tighten fasteners D from the bottom of the car. When complete, reattach the fender flare to the rear bumper by reinstalling two part fastener E's in four places by inserting the spreading part of Fastener E first into the bumper. Next, use a screwdriver to push in the two piece connectors. When complete, reconnect the bumper to the fender flares by popping the three tabs back into their slots.

Next, reinstall the fastener B nuts. Then maneuver the inner fender wells inside the rear bumper and install the fastener F screws. Finally, install the fastener A screws.

Now with the cover on, you will notice that you can't see the hitch. There is one more hole to be drilled through the steel bumper substructure. Using the same 2 or 2 1/2" holesaw and electric drill, drill through the steel substructure using the hole in the bumper cover and license plate as a guide. When complete, you should see your receiver.





## 2011 + Mini Cooper Countryman and Countryman S Trailer Receiver Hitch Installation Instructions



### Step 4: Use

The receiver portion is set in behind the license plate. To use your receiver hitch, remove the four license plate Phillips screws. Now reinstall the license plate by placing the two top screws into the two bottom holes in the license plate holder.





## 2011 + Mini Cooper Countryman and Countryman S Trailer Receiver Hitch Installation Instructions

### Step 5: Legal Stuff

Thanks for choosing [www.MinidoMore.com](http://www.MinidoMore.com). It was a pleasure doing business with you.

#### **WWW.MINIDOMORE.COM LIMITED LIFETIME WARRANTY**

Each trailer hitch manufactured by [www.MinidoMore.com](http://www.MinidoMore.com) is warranted to the original purchaser to be free from defects in material and workmanship for as long as original purchaser owns the vehicle on which the trailer hitch was originally installed. Any defective hitch may be returned freight prepaid with dated proof of purchase receipt and will become the property of [www.MinidoMore.com](http://www.MinidoMore.com). Finishes are not warranted. This warranty does not apply to any [www.MinidoMore.com](http://www.MinidoMore.com) hitch damaged as a result of abuse, neglect, improper installation, overloading, or alteration. This warranty is limited to the replacement of the defective hitches only. Installation, removal, incidental or consequential losses or expenses incurred as a result of using a [www.MinidoMore.com](http://www.MinidoMore.com) hitch such as towing, telephone, lodging, rental fees, fuel, transportation, or time lost are not covered.

Products sold but not manufactured by [www.MinidoMore.com](http://www.MinidoMore.com) will be subject to the terms and conditions of the original manufacturers warranty and are not warranted for any purpose by [www.MinidoMore.com](http://www.MinidoMore.com).

This warranty gives specific legal rights and you may have other rights which vary from state to state. The manufacturer reserves the right to make changes, additions, or improvements to new product without obligation to install same on existing product covered by this warranty.

Please be sure to read and follow all assembly and installation instructions.

All [www.MinidoMore.com](http://www.MinidoMore.com) Trailer Receiver Hitches have a maximum 200 lb tongue weight rating and a maximum 2000 lb gross weight rating. NEVER exceed recommended loading ratings for Trailer Receiver Hitch or Miniature Trailer.