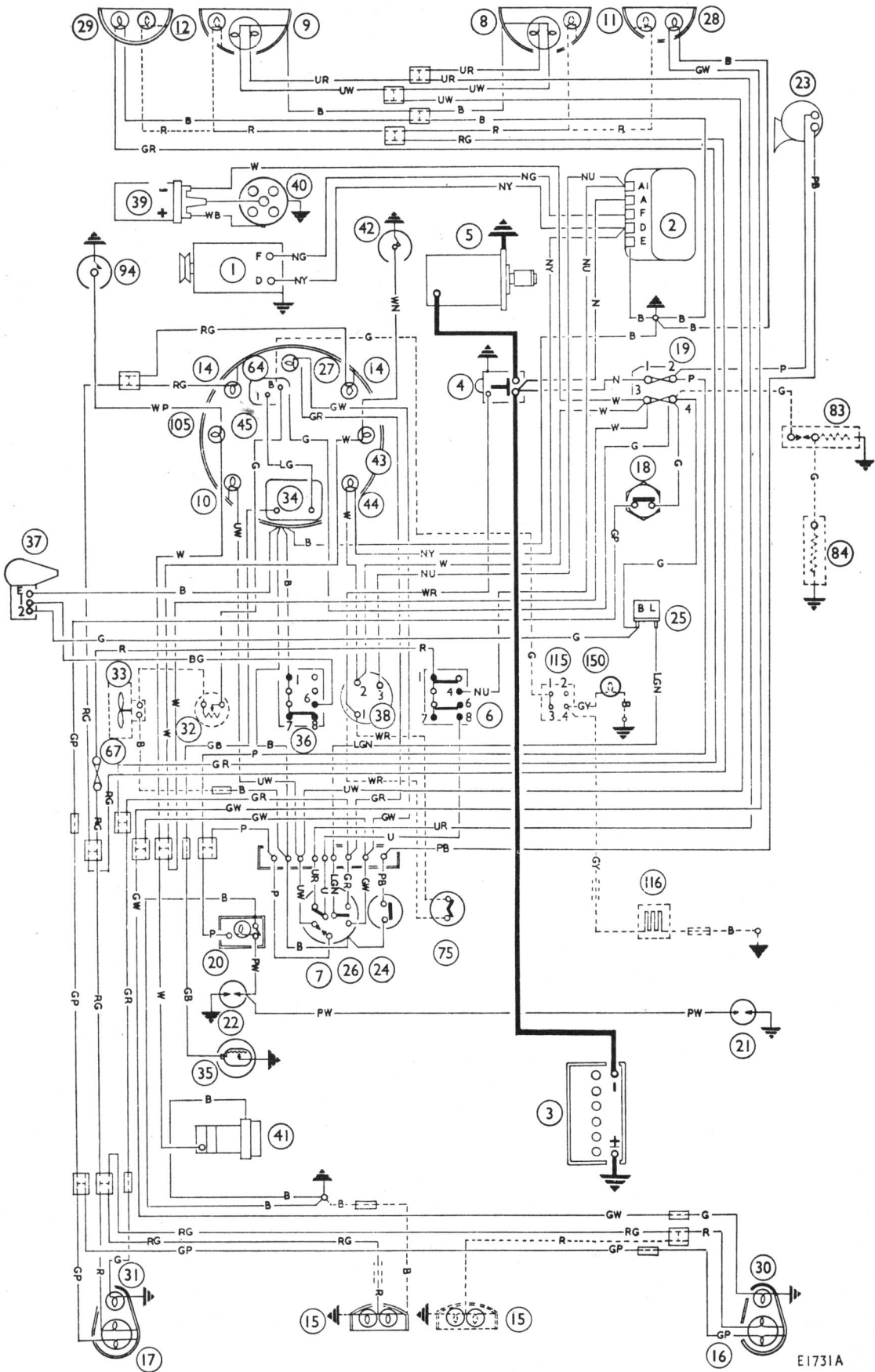


WIRING DIAGRAM

Standard Saloon, Van, and Pick-up Mark II



KEY TO WIRING DIAGRAM

No.	Description	No.	Description
1.	Dynamo.	29.	L.H. front flasher lamp.
2.	Control box.	30.	R.H. rear flasher lamp.
3.	12-volt battery.	31.	L.H. rear flasher lamp.
4.	Starter solenoid.	32.	Heater switch. } when
5.	Starter motor.	33.	Heater motor. } fitted.
6.	Lighting switch.	34.	Fuel gauge.
7.	Headlamp dip switch.	35.	Fuel gauge tank unit.
8.	R.H. headlamp.	36.	Windscreen wiper switch.
9.	L.H. headlamp.	37.	Windscreen wiper motor.
10.	Main-beam warning lamp.	38.	Ignition/starter switch.
11.	R.H. sidelamp (in headlamp or flasher) lamp.	39.	Ignition coil.
12.	L.H. sidelamp (in headlamp or flasher) lamp.	40.	Distributor.
14.	Panel lamps.	41.	Fuel pump.
15.	Number-plate lamp (two for Van).	42.	Oil pressure switch.
16.	R.H. stop and tail lamp.	43.	Oil pressure warning lamp.
17.	L.H. stop and tail lamp.	44.	Ignition warning lamp.
18.	Stop lamp switch.	45.	Speedometer.
19.	Fuse unit: 1-2, 35 amp.; 3-4, 35 amp.	64.	Bi-metal instrument voltage stabilizer.
20.	Interior light.	76.	Line fuse, 35-amp.
21.	R.H. door switch.	75.	Automatic gearbox safety switch (when fitted).
22.	L.H. door switch.	83.	Induction heater and thermostat (when fitted).
23.	Horn.	84.	Suction chamber heater (when fitted).
24.	Horn-push.	94.	Oil filter switch. } Not fitted on
25.	Flasher unit.	105.	Oil filter warning lamp. } Automatic.
26.	Direction indicator and headlamp flasher switch.	115.	Rear window demister switch (when fitted).
27.	Direction indicator warning lamp.	116.	Rear window demister unit (when fitted).
28.	R.H. front flasher lamp.	150.	Rear window demister warning light (when fitted).

CABLE COLOUR CODE

B. Black.	G. Green.	W. White.
U. Blue.	P. Purple.	Y. Yellow.
N. Brown.	R. Red.	L.G. Light Green

When a cable has two colour code letters the first denotes the main colour and the second denotes the tracer colour.