



7075-T6 ALUMINUM ADJUSTABLE REAR ANTI-SWAY BAR END-LINK NM.328856

[R55] MINI Cooper Clubman 2008-up [Including Cooper S]
[R56] MINI Cooper Hardtop 2007-up [Including Cooper S]
[R57] MINI Cooper Convertible 2009-up [Including Cooper S]
FOR LOWERED VEHICLES ONLY

PARTS INCLUDED:

- | | | | |
|--------------------------------------|-------------------------------------|-----------------------------------|----------------------------------|
| [2] Billet End Link | [2] M10x55mm Socket Cap Bolt | [2] M10x50mm Socket Cap bolt | [4] Stainless Steel Spacer |
| [2] M10 Ball Joint Right-Hand Thread | [2] M10 Ball Joint Left-Hand Thread | [2] M10 Jam Nut Right-Hand Thread | [2] M10 Jam Nut Left-Hand Thread |

TOOLS & SUPPLIES REQUIRED:

- | | | | |
|---------------------------|---|--------------------|------------------------|
| [1] Vehicle Jack | [2] Jack Stands | [1] Ratchet Handle | [1] Torque Wrench |
| [1] 17mm Wheel Lug Wrench | [1] 16mm Deep Socket | [1] 16mm Wrench | [1] 5mm Hex Key Wrench |
| [1] 8mm Hex Key Wrench | [1] 16mm or 5/8 inch Thin Open End Wrench | | |

1. Park vehicle on a flat, level surface capable of supporting the vehicle's weight on jack and jack stands.

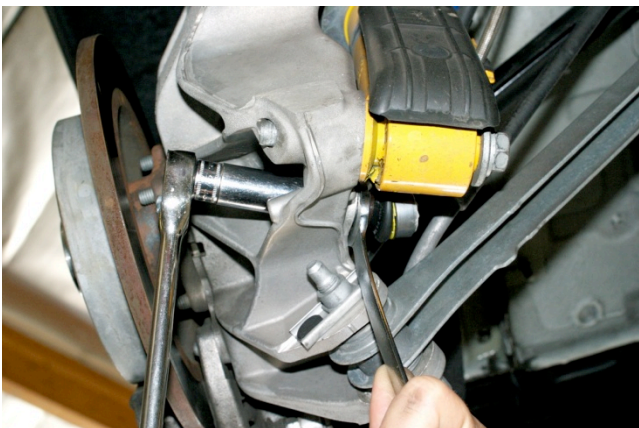


2. Loosen rear wheel lug bolts.

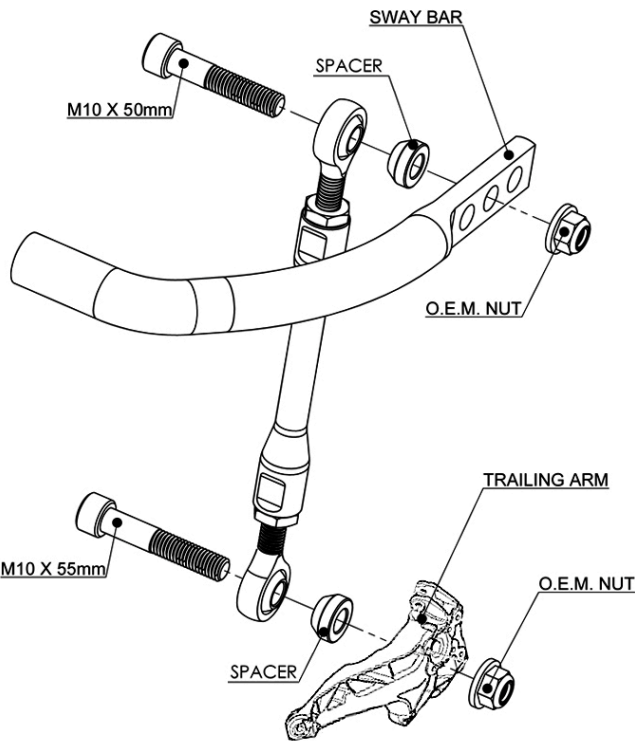
3. Using the manufacturer's recommended lifting points, raise rear of vehicle and support with jack stands. Remove rear wheels. **WARNING: NEVER WORK UNDER A VEHICLE SUPPORTED ONLY WITH A JACK - SERIOUS INJURY OR DEATH CAN OCCUR!**



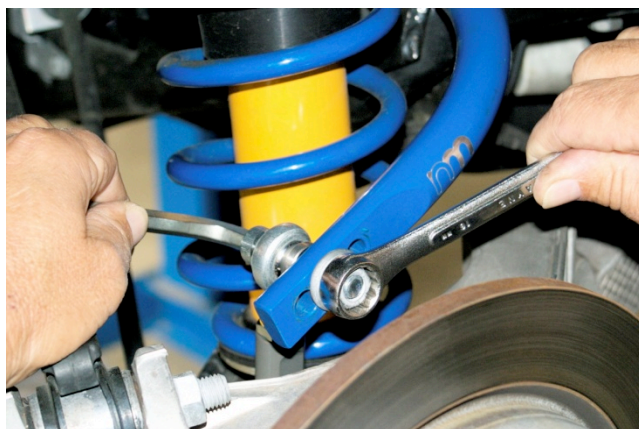
4. Unbolt nut from rear anti-sway bar to end link using a 16mm wrench and 5mm hex key wrench. Repeat for other side.



5. Unbolt end link from trailing arm using a 16mm deep socket and 16mm or 5/8 inch thin open end wrench, then remove end link. Repeat for other side.



6. Install NM end link per illustration. Use M10x50mm bolt at anti-sway bar and M10x55mm bolt at trailing arm. Reuse factory nuts. NM Adjustable End-Link has been pre-set and is ready to be installed on vehicle lowered with NM RS-α Springs. For vehicles lowered with other springs, adjustment may be required and if desired can be done on the vehicle by loosening ball joint jam nuts and turning billet link, threads are right and left hand. After adjustment, tighten jam nuts so ball joint housings are in-line with each other.



7. Tighten bolt using 8mm hex key wrench and 16mm wrench. Torque to 45 Nm (33 ft. lbs.)

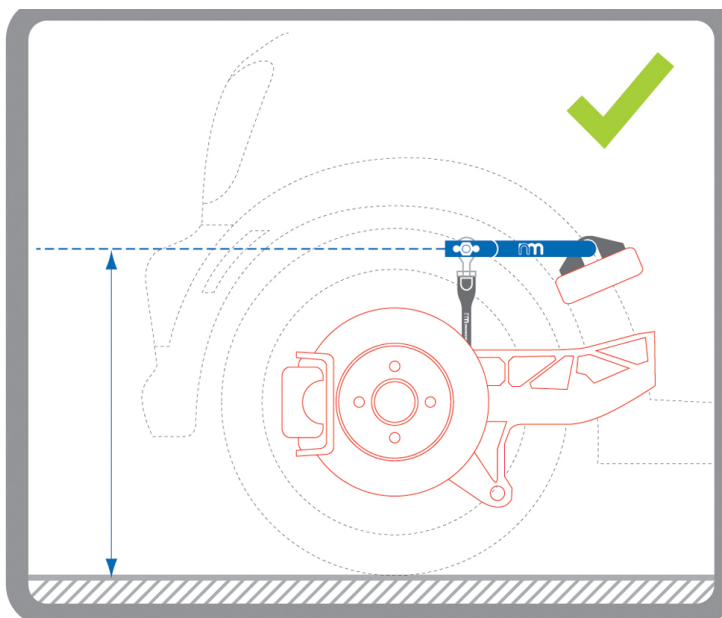
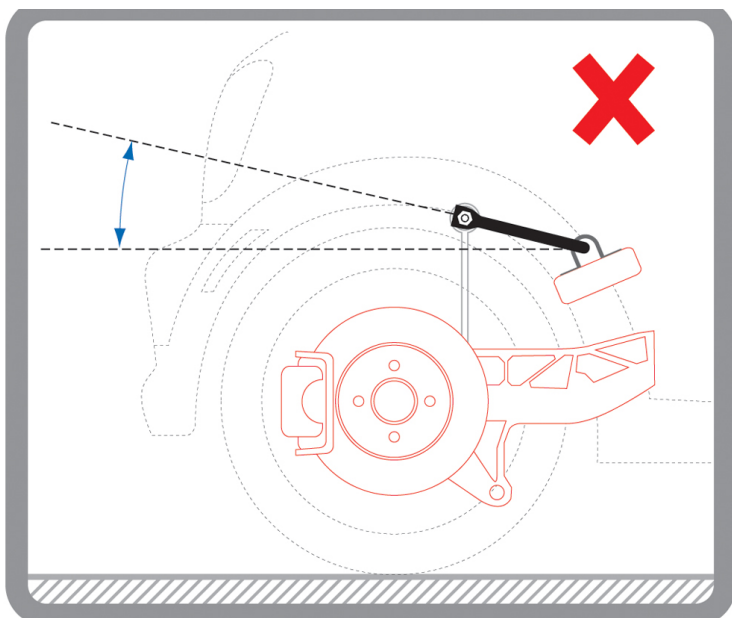


8. Tighten M10x55mm bolt and factory nut using 8mm hex key wrench and 16 mm deep socket. Torque to 45 Nm (33 ft. lbs.).



9. Mount rear wheels. For factory wheels ONLY, torque lug bolts to 140Nm (103 ft-lbs). For aftermarket wheels, contact wheel manufacturer for proper torque specifications. Double-check complete installation.

©2009 NM Engineering, a division of Automotive Performance Systems, Inc. All rights reserved. Reproduction in whole or in part is prohibited. DOC.NM.328856 Rev. 05.26.09



A note on link adjustment

With the vehicle at rest, the optimal position for the anti-sway bar is horizontally flat or parallel to the ground. Depending on the lowering springs used on your MINI, some extra adjustment may be required to properly position the rear anti-sway bar neutrally.

Adjustment can easily be made by loosening both jam-nuts and rotating the link body to extend or reduce the links overall length. You'll need two 17mm wrenches.