

## 67 Speedos and Gauges



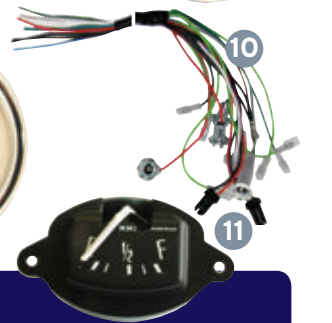
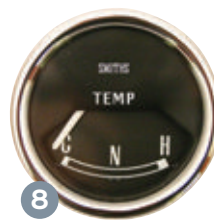
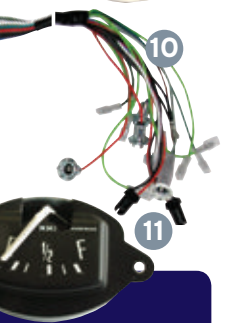
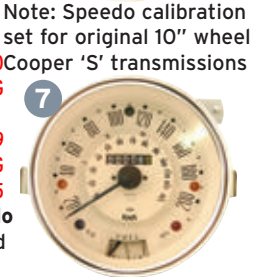
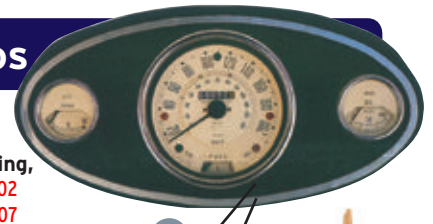
### Speedo Cables

- Speedo cables with grey plastic ends were fitted to all Clubman body shape Minis and also 1980-88 Minis with Smiths twin type clock, positioned in front of the driver. No.1 ends are interchangeable with No.4 and used on many of our cables.
  - Early cars and L/H/D where cable length is 33" or less. GSD102
  - Later cars where 48" cable was fitted or required pre 1990. GSD415
- Innocenti speedo 26" cable for Veglia or Jaegar clocks that have small union and nut. .L362120
- Speedo cable for cars that have the original Smiths center positioned clock with built in fuel gauge such as Minis pre 1979 and any vans. (Not Clubman).
  - Original cable with length of 26" GSD101MS
  - Longer cable with length of 30" as used when converting cars post 1990 to central speedo cowl assembly .0722-30
  - Cable with length of 36" when moving central speedo to a position in front of driver .0722-36
  - Mini Moke speedo cable and also used when moving central speedo to a new location. 39" long also used on old Austin, Morris 1100/1300 style vehicles .0722-39
  - 48" extra long cable for specials when required. .0722-48
  - Super long cable for some rear engine specials requiring 66" length. Also fits Austin Healey Sprites & MG Midgets .0722-66
- Cables with white plastic ends were introduced by Rover when they started fitting the Nippon Seiki range of speedos and gauges in 1988. The grey type are interchangeable and are commonly used when looking for different lengths.
  - R/H/D 42.5" long GSD487
  - L/H/D 29" long GSD488
  - Lower section of 2 part cable 1999 on GSD545
  - Upper part of 2 part cable R/H/D 1999 on GSD546
  - Upper part of 2 part cable L/H/D 1999 on GSD547



### Smith's Speedos

- Original Cooper "S" speedo housing and parts.
- Black plastic fascia casing, bare .24A2702
    - Oval beading .14A9907
    - Clips for oval beading (qty 14 required). .14A9796
  - Black face 130mph speedo with fuel gauge and voltage stabiliser fitted for 3.4 final drive ratio .13H4442
    - Magnolia face .13H4442MG
  - Black face 200kph speedo with fuel gauge and voltage stabiliser fitted for 3.4 final drive ratio .13H4444
    - Magnolia face .13H4444MG
  - Black face - Temperature gauge, electrically operated with C.N.H reading .13H4460
    - Magnolia face .13H4460MG
  - Black face - Oil gauge, mechanical with 0-100 lb/sq.inch reading .13H4459
    - Magnolia face .13H4459MG
  - Central clock conversion harness PM05
  - Black face - Fuel gauge for central speedo from 1964 on when voltage stabiliser is fitted .13H2133
    - Magnolia face .13H2133MG



### Smith's Gauges

0 - 80 x 100 electronic impulse tachometer (fits 80mm Pod No. 12)



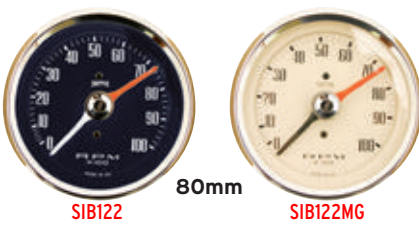
Ammeter with 60-60 Scale



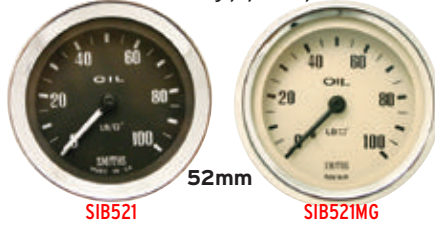
Oil temperature gauge mechanical fitting (racers fit to sump plug location using HPS8 union. P68 No.23)



0 - 100 x 100 electronic distributor/coil sensed tachometer (fits 80mm Pod No. 12)



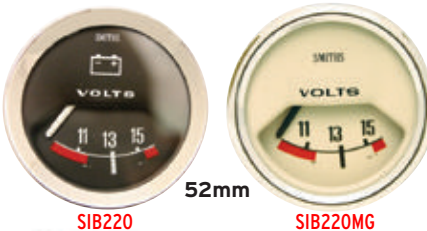
Oil pressure gauge 0 - 100lb/in" oil connecting pipe required



Water temperature 30 - 110° centigrade, with 6" 6" capillary mechanical fittings



Voltmeter



Electric clock



Dual oil pressure/water temperature gauge with capillary temp fittings (oil connecting pipe needed)

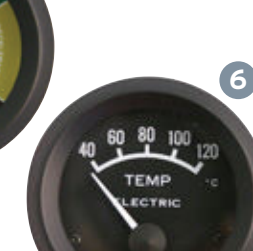




## Tim Gauges

Tim gauges have black rims (chrome accessory rim available) and glare free internal illuminations, complete with fitting instructions. All gauges are 52mm (2 1/16") diameter except 80mm diameter tachometers.

1. **Ammeter gauge with 60-60 amps grading** for use with alternator only. Can be used for 6 or 12 volt systems with either positive or negative earth. **TIM004**
2. **Water temperature gauge with 40-120 degree centigrade calibration.** This is a mechanical movement gauge which comes complete with 57" long metal capillary tube **TIM005**
3. **Oil pressure gauge with 0-100 lbs calibration,** complete with copper pipeline and 'T' piece fittings. **TIM006**



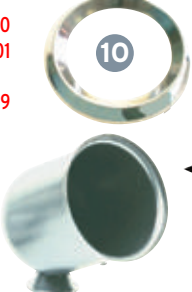
4. **Battery voltmeter gauge,** warns you of electrical or charging defects, low battery condition **TIM007**
5. **Vacuum performance gauge,** mechanical movements and colored segments indicating performance with 0-30 ins/hg scale **TIM008**
6. **Electrically operated temperature gauges with 40-120°C centigrade scale.** For negative earth only. **TIM034**
7. **Adaptor for oil gauge** if a plastic hose is preferred to original metal type. **LMA017**



8. **Tachometer with 0-80 RMP x 1000 scale 80mm (3 1/8") diameter pod mounted** for fitting on or under dash. Suitable for 4, 6, 8 cylinder gas engines with negative earth. **TIM011**
9. **Tachometer 0-8 RMP x 1000 scale.** But this is the small 52mm diameter for dash installation. Easy to fit suitable for 4, 6, 8 cylinder with negative earth for gas engines only **TIM014**



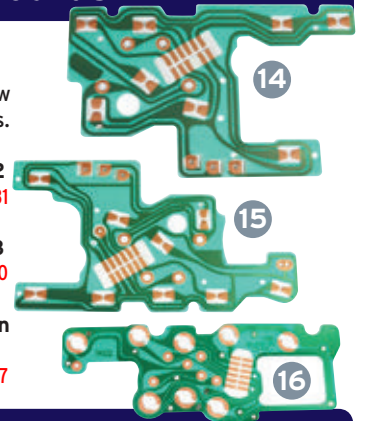
10. **Chrome bezel to fit all 52mm gauges** only. **TIM023**
11. **A dash mounting pod to hold any 52mm gauge** **TIM039**
12. **POD to fit 80mm tachometer.**
  - a. Black **SIB800**
  - b. Chrome. **SIB801**
13. **Black metal bezel for holding 52mm gauges.** Single hole **LMA049**



## Printed Circuit Boards

Printed circuit boards (PCB) for Mini gauges. These have been unavailable for many years are now being manufactured for Minisparts.

14. **Printed circuit board for pre 1989 Mini with Smith's type 2 gauge clusters** **37H4881**
15. **Printed circuit board for pre 1989 Mini with Smith's type 3 gauge clusters** **BAU1930**
16. **Printed circuit board for 1989 - 1996 Minis with Nippon Seiko type 3 gauge clusters.** **CDU3247**



## Capillary Pipes & Fittings



17. **5 ft plastic oil pipe** **OL**
18. **Angled oil pipe adaptor for fitting in confined spaces to eradicate damaging oil pipe** **0AA**
19. **Oil gauge adaptor for fitting into block or T-piece** **0AA**
20. **'T' piece for fitting to block enabling oil gauge and switch to be used together** **TP**
21. **Temperature gauge adapter for fitting cylinder head or thermostat housing with take off.** Already supplied with TIM gauges, but useful for SMITHS and other makes **TE5**
22. **Capillary take-off sump plug.** This is the sump plug required to fit a capillary type Smiths oil temperature gauge, as used by racers **HPS8**
23. **Magnetic sump plug with extension to collect all magnetic debris in the gearbox.** **DPI**

## Oil Switches

24. a. **Standard replacement oil switch that activates between 7-10LB** **GPS133**  
 b. **Oil pressure switch that triggers off when oil pressure drops below 22LB.** **HPS1**
25. **Oil pressure adjustable switch that activates between 15-60lb as required.** **HPS3**
26. **Oil pressure switch fitted from 1996 on** **GPS135**
27. **Oil temperature transducer.** Fitted as standard on all twin point cars from 1996 which have electrical oil temperature gauge, this transducer switch replaces the oil pressure release cap on the engine block. **YCB100320**

