

# Mini Mania

Performance Parts  
and Accessories for the  
MINI Cooper and  
Cooper 'S'

## TUNER CATALOG

2005 CATALOG



### Your **ULTIMATE** MINI Source

Engine to Interior - Race, Street and Show  
Featuring **ULTRIK** and Other Top Brands  
and the **ULTIMATE** in Tuner Support

**800-946-2642**

SECURE ON-LINE ORDERING, TECHNICAL ARTICLES AND MORE - 24/7:

**new.minimania.com**

## Buy with confidence from the **MINI Leader**

Since 1974, **Mini Mania** has been dedicated to providing the best engineered and race tested products to satisfy the needs of the Mini enthusiast. We continue to be the leader by offering innovative, well-engineered products for the New MINI, helping you to achieve your performance and enjoyment goals. Our combination of technology with



professionalism, integrity and a dedication to the ultimate in customer satisfaction has established Mini Mania as the most trusted name in our field.

**Celebrating our 30th year!**

### **The Mini Mania *ULTIMATE WARRANTY*** **Maximum Performance with Minimum Risk**

Mini Mania's limited warranty matches and complements the vehicle manufacturer's new car limited warranty. **Mini Mania branded products are warranted for two years/ 24,000 miles, or the remaining term of the vehicle manufacturer's new car limited warranty, whichever is greater.**

This means more miles, more coverage, more assurance that your MINI stays at peak performance, miles beyond anyone else in the industry.

Mini Mania's customer service extends beyond the sale of the product. Our product warranty is the best in the business, offering our customers the peace of mind that Mini Mania branded products will meet or exceed expected performance.

Now you are assured that whatever the Mini Mania branded part, whatever part of your factory warranty remains, the Mini Mania warranty keeps your MINI at peak performance with *minimum* fuss.

## what's on **minimania.com** ...

**new.minimania.com** is your ultimate source for MINI tuning information. One convenient web location leads you to the information you need to be the premier MINI tuner in your area. Bookmark our **TUNERS** page and return often to find:

- ♦ Installation instructions
- ♦ Full warranty text and claim instructions
- ♦ Technical articles
- ♦ Tuner Program news
- ♦ New products
- ♦ Authorized Mini Mania Tuner listings



**Go to new.minimania.com ♦ click on the TUNERS icon ♦ set your bookmark!**



## Welcome to Mini Mania's DEALER and TUNER PROGRAM

Mini Mania's dealer and tuner program will put your business miles ahead of your competition. With a full line of aftermarket products backed by a warranty that is the envy of the industry, your business can grow more profitable, more quickly.

**Two participation levels** give you easy access to the Ultimate MINI Source. Bring the best name in the business to your bottom line. Mini Mania offers two levels of discount with low or no buy-ins to fit your shop's style of business.

**The Ultimate Warranty** assures both you and your customers that Mini Mania's ULTRIK products will provide reliable performance increases, while removing limitations of the OEM warranty.

**Co-marketing opportunities** are available to allow you to contact local MINI owners. Mini Mania supports its dealers and tuners with the ultimate in targeted marketing, by sending mailings to our customer base in your area.

**Your listing on minimania.com** will direct site visitors to your shop for their performance and style modifications. Our website receives tens of thousands of unique visitors *per day* – MINI enthusiasts who know that Mini Mania is the ultimate source for information on MINI tuning.

**On-line installation instructions** in Acrobat PDF format make it easy for you to get detailed directions for many of our products – 24 hours a day, 7 days a week.

**Retail flyers for your customer waiting area** are yours for the asking! Build business by making it easy for customers to see what Mini Mania has to offer for their MINI.

**Contact Mini Mania's Customer Service  
Department TODAY to enroll as  
an Authorized Mini Mania Tuner!**

### FEATURING

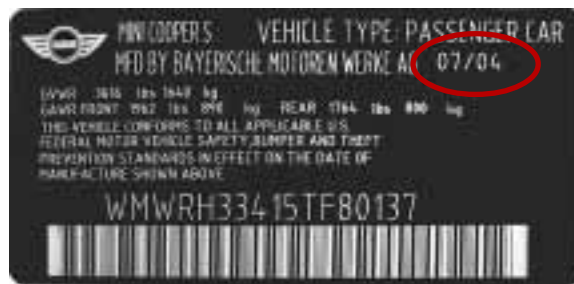
# ULTRIK

### PERFORMANCE PRODUCTS

ULTRIK is Mini Mania's own brand of exclusive aftermarket performance products for the MINI Cooper and Cooper 'S'. Each ULTRIK product is backed with over 30 years of performance and tuning experience, and is track-tested for durability and reliability. All ULTRIK products carry Mini Mania's unprecedented 'Ultimate Warranty', eliminating any worries for both the tuner and end-user. Experience, testing, reliability and warranty make ULTRIK the ultimate choice for your performance tuning projects.

### CHECK THE PRODUCTION DATE ...

... on the VIN plate found in the driver's side door jamb. MINI design changes take place from one model year to the next, and even at mid-year, which can affect product fitment.



## MINI Engine Scan/Reset Tool

**NME4020**

This tool is indispensable for every MINI tuning shop, as well as every MINI owner. It reads and displays all engine fault codes, and resets Service Engine Soon light. The Engine Scan/Reset tool will tell you exactly what's wrong with your customer's MINI, saving you time by directing you right to the problem.

The Engine Scan/Reset tool also resets the oil service and inspection lights, routine maintenance lights, and the maintenance mileage countdown indicator. A shop or owner can perform routine maintenance while retaining the MINIs maintenance and warning light features.

Any MINI owner – even those who are not mechanically inclined – will find the Engine Scan/Reset tool easy to use; they will appreciate knowing why the Service Engine light is on, and whether the problem is simple enough to correct themselves. Instruction manual, code chart, and storage case included.



- **Inexpensive** – Could pay for itself with a single use!
- **Versatile** – Works with any MINI from 2001 to 2004, both Cooper and Cooper S
- **Durable** – Withstands daily use by professional mechanics
- **Very easy to use** – on par with pumping your own gas.

## Pulley Remover Tool

**NME5018**

Simplify the removal of your stock supercharger pulley when upgrading to a smaller pulley. This single-piece design eliminates the need to remove the belt tensioner. Simply remove the belt and slip this new pulley removal tool over the stock pulley, tighten the bolt and the stock pulley pulls right off. It doesn't get any easier. Engine must be raised slightly to gain access to the pulley.



## Rear Brake Tool

**NMB2990**

When replacing the rear brake pads, it is necessary to retract the piston in the caliper to make room for the new pads. The piston in the rear caliper on the MINI needs to be 'rotated' as it is retracted - which is easily accomplished with this special factory tool. This tool ensures the right amount of turn as the piston gets retracted.



## Belt Tensioner Tool

**NME5990**

This OEM belt tensioner tool will make the job of replacing your drive belt much easier and faster, and will save time and effort while installing our Performance Pulley upgrade.



## Air Cleaner Element

**NME2001 Cooper**

**NME2101 Cooper S**

**2002 - 2005**

Replace your stock filter with washable, reusable foam for better air flow and performance. There is no easier way to pick up horsepower than simply changing your air filter. This high-tech filter will not only reduce the dirt getting into your engine, but the air flow increase will result in a consistent performance increase over the entire RPM range.



## K&N Air Filter Element

**NME2005 Cooper**

**NME2009 Cooper 'S'**

**2002 - 2005**

K&N offers high air flow with excellent filtration. Designed to increase horse-power and acceleration, this filter is washable and reusable. Lasts up to 50,000 miles before cleaning is required (depending on driving conditions). Ten Year / Million Mile Limited Warranty from K&N.



## K&N Filter Care

**NME2011 Cleaner, 14.5 oz**

**NME2010 Filter Oil, 5.5 oz**

To get the maximum benefit from your K&N filters they should be cleaned and re-oiled periodically. We recommend using K&N filter cleaner (never use gas or solvents!) and filter oil spray to improve filter effectiveness.



## OEM Oil Filter

**NME1050**

Oil Filter element for Cooper and Cooper 'S'; fits 2002 through 2005 models.



## Battery Tender

**NME7020**

If you don't drive your car in the rugged winter months you should keep the battery charged. This fully automatic, two stage charger from Deltran assures batteries are maintained at full charge and increases battery life. Just plug it in and forget it. Five year warranty.





## MINI Service Manual, '02-'04

**BOOK107**

**2002 - 2004 MC / MCS**

All new service manual for the MINI Cooper and MINI Cooper S by Bentley Service Publications.

This service manual for the new MINI Cooper and MINI Cooper S by Bentley Service Publications is a comprehensive source of service information and specifications for MINI Cooper models from 2002 to 2004. The aim throughout this manual has been simplicity, clarity and completeness, with practical explanations, step-by-step procedures and accurate specifications. Whether you're a professional or a do-it-yourself MINI owner, this manual will help you understand, care for and repair your car.

Though the do-it-yourself MINI owner will find this manual indispensable as a source of detailed maintenance and repair information, the owner who has no intention of working on his or her car will find that reading and owning this manual will make it possible to discuss repairs more intelligently with a professional technician.

### Models and engines covered:

**Cooper:** 1.6 liter normally aspirated engine

**Cooper S:** 1.6 liter supercharged engine

### Transmissions covered:

**Cooper:** Manual 5-Speed

Automatic Continuously Variable

**Cooper S:** Manual 6-Speed Getrag

### MANUAL FEATURES:

- ◆ Procedures for everything from basic oil change service to interpreting the malfunction indicator light. This manual tells you what to do and how and when to do it.
- ◆ Engine and cylinder head service, including camshaft timing chain setup and adjustment.
- ◆ Information for specific driveability problems, including explanation of the engine management system and ABS II diagnostic trouble codes.
- ◆ Theory of operation and repair information for the AMS2000 engine management system.
- ◆ Supercharger and intercooler information, including component removal and replacement.
- ◆ Drivetrain maintenance, including troubleshooting, adjustment and repair of clutch, gearshift linkage and drive axles.
- ◆ Manual and automatic transmission removal installation, seal replacement and external service.
- ◆ System description and repair information for Antilock Brakes, Automatic Stability Control and Dynamic Stability Control.
- ◆ Heating and air conditioning repair, including component replacement.
- ◆ Body adjustments and repairs, including sunroof and rear hatch.
- ◆ Wiring schematics and extensive electrical component section specifying relay, control module and ground locations with detailed illustrations and photos.

## Motoring: Getting the Maximum from Your New MINI

**BOOK45**

By Gary Anderson and Don Racine

Published by Enthusiast Publications LLC, 2005

6x9 inches, softbound, 240 pages, over 100 color illustrations

The MINI Cooper and MINI Cooper S have been best sellers since their introduction in 2001. Based on the iconic original Minis that were popular in North America in the 1960s, the new MINIs have shown their owners that driving can be fun as well as practical.

But there's more potential in these little cars than has been realized by their designers. A broad range of products to improve power, handling, and performance has emerged in the automotive aftermarket. With only a small investment, the MINI owner can make his or her car a marvelous performer on the track and autocross course as well as on the street. Unfortunately for most owners, the choices to upgrade the MINI are almost overwhelming and the jargon that surrounds these products and their use is confusing, at best.

This new book was written in response to this situation. It demystifies both the process of upgrading the MINI and the techniques of driving well. In a sequence of four parts, the reader is shown how to buy a MINI, make changes that improve performance on the road, upgrade performance and handling for autocrossing and track days, and finally build a full-race version of the car.

In each section, aftermarket components are introduced in the order that makes the most sense to upgrade the car. As each component is discussed, the technology of how the MINI works and why the new component can improve its performance is explained.

In parallel with these technical discussions, the authors introduce and explain the techniques of how to drive the MINI safely and well. In addition to standard street driving techniques, the authors discuss techniques for driving on autocross courses and race tracks, with particular attention to the unique characteristics of the front-wheel-drive MINI.

Throughout the book, color pictures and illustrations highlight points explained in the text. The authors don't assume that the reader knows anything about the mechanical side of cars or technical driving techniques, but by the end of this book, the MINI owner will have a comprehensive grasp of these principles and a practical step-by-step recipe for taking a new MINI to whatever level of performance is appropriate to the owner's intentions for its use.

Author Gary Anderson has been publisher of British Car Magazine and more recently editor of Classic Motorsports Magazine, and his book on Austin-Healey restoration published by Motorbooks has been a best-seller among auto hobby books. He is active in vintage racing, and has raced at the Monterey Historics; he is also an award winner in national concours events. Co-author Don Racine has been racing Minis for nearly four decades – as long as he has been owner of Mini Mania, one of the world's leading suppliers of parts for all types of Minis. His company is a leading developer and supplier of competition and performance parts for New MINIs, all of which are tested on Don's own new MINI race cars, which he has driven to class wins in several MINI racing events.





# MINI MANIA STAGE KITS AND UPGRADES

## Stage I Kits

NMK1001 Cooper

NMK1005 'S', 2002-2003

NMK1055 'S', 2002-2003 w/Borla

NMK1205 'S', 2004

NMK1204 'S', 2004 w/Borla

*Kits for 2005 models coming soon*

Horsepower and handling - the best of both worlds is what the MINI is known for but a little bit more is all the better. Mini Mania's Stage I Kit improves both while keeping your MINI street-legal, for the daily driving enthusiast. Our slightly stiffer but lower **springs** and an **adjustable rear sway bar** make a noticeable improvement in your driving enjoyment. The horsepower gains from the improved **intake** and **exhaust system** are complemented by the great exhaust note! Stainless 'Stage 1' **sill plates** complete the look.



## Stage II Kits

**SEE CHART PAGE 8 FOR OPTIONS & PART NUMBERS**

Our Stage II Kits deliver more power and offer versions tailored for both street and race applications. All Stage II kits use our **cold air intake** and **cat back exhaust system** as a starting point; all offer an **ECU remap program**, with the exception of the 205 HP kit; and all kits for the Cooper 'S' include our best-selling supercharger **pulley upgrade**. Street versions include Iridium **spark plugs**, and race versions include our high-performance **header**.



## Stage III Kits

**SEE CHART PAGE 8 FOR OPTIONS & PART NUMBERS**

The Stage III kit increases the stock 163 horsepower by **50%(!)**, without sacrificing driveability. The improvement is felt throughout the RPM range from off-the-line all the way to redline. Stage III kits include all components of the various **Stage II** kits, and adds **camshaft** and **cylinder head** for Cooper and 'S'; the 'S' versions also include **throttle body** and Iridium **spark plugs**.

To duplicate Motor Trend's experience with your own MINI Cooper 'S', add our **High Performance Suspension Upgrade** to your Stage III Kit; see page 18.



Put your MINI in top form with our convenient and cost effective Stage Kits. With components designed to work together to deliver improved power, response and handling, these one-stop packages help take the guesswork out of performance tuning.

"As expected, the **Stage III** components increase the MINI's fun factor to near **carnival-ride** proportions."

*Motor Trend Magazine, Feb. '04*

**Motor Trend** went for a ride in Mini Mania's 'Super Cooper S' fitted with our Stage III kit, Suspension upgrade, and a few other toys. They were impressed, to say the least. Read their full review on our website:

**new.minimania.com**



**See page 18 for  
Suspension Upgrade Kits**

## Cooper S 'Boost' Kit

NMK1040 91 Octane

NMK1041 93+ Octane

2002 - 2005 MCS

Not ready to take the plunge into a full Stage kit? Get immediate results with this Cooper S boost upgrade kit. This kit includes the pulley upgrade kit, ECU software upgrade optimized for the pulley upgrade and 91 octane gas, and a set of Iridium plugs to help prevent early detonation. Customers have reported 25 to 30HP increase over stock!

Not only does this kit deliver increased peak horsepower and torque, but also improves off-the-line performance, smoother acceleration, better throttle response, and an overall improvement in driveability.



## JCW Upgrade Kits

NMK1034 '02-'03 JCW to Stage II

NMK1037 '04 JCW to Stage II

NMK1038 JCW to Stage III RACE

MCS – ITEM CARRIES CORE CHARGE



For JCW MINI owners seeking maximum performance, Mini Mania offers an upgrade to take your MINI to the next level. **JCW to Stage II** kits include our Cold Air Intake and Suspension upgrades; **JCW to Stage III** kit includes Cold Air Intake, Header, Pulley Upgrade, Camshaft and Throttle Body upgrades.

"Like no other Mini we've driven ...  
Compared with a standard  
'S' or even the JCW car,  
**this thing  
flat hauls."**

Road & Track *SPEED*, Spring '04

Full review available on  
**new.minimania.com**





## Comparing Mini Mania Stage Kits to JCW

The John Cooper Works Kit offered by the MINI USA is a fine upgrade which steps up the performance of the MINI. As a factory offering, you can be assured it is well engineered and carefully tested. However, as a factory offering, it is also relatively conservative. At present, MINI USA does not offer upgrades beyond the JCW kit.

**There is an alternative. Mini Mania offers a variety of upgrades to take your MINI's performance well past the JCW Kit.**

Mini Mania's upgradeable Stage II kit outperforms the JCW kit – delivering 215 HP compared to JCW's 200 HP – at about HALF the price! Components from Mini Mania can be mixed and matched to meet your specific requirements. All our products are thoroughly tested on the track and the streets with our fleet of test vehicles.

**Mini Mania's limited warranty** provides the same kind of protection offered by the factory-approved JCW installation. Mini Mania gives you peace of mind regarding your MINI's continued reliability.

COMPONENT	JCW KIT 200 HP	MM Stage II Kit 215 HP	MM Options
Cylinder Head	Included		Available
Exhaust System	Included	Included	
ECU Upgrade	Included	Included	
Supercharger Upgrade	Included		
Supercharger Pulley Upgrade	Included	Included	
Cold Air Intake		Included	
Exhaust Header		Included	
Throttle Body			Available
Performance Camshaft			Available

## GETTING THE MOST OUT OF YOUR MINI UPGRADING YOUR COOPER S

The BMW MINI is a spectacular reincarnation of the classic Mini Cooper. The short wheel base, rigid chassis, light weight, combined with BMW engineering results in a car which handles exceptionally well straight from the factory. But the stock MINI also provides an excellent platform for the enthusiast where upgrades can transform the car into a machine which is nothing short of phenomenal.

As with any internal combustion engine, horsepower and torque are increased by improving flow of air and fuel into and exhaust gasses out of the engine. Reducing rotational mass of engine and drive train components improves 'responsiveness' for better throttle response and all around driveability. Each upgrade provides an incremental increase in performance, but a 'packaged' approach offers the highest gains.

For the 1.6 liter supercharged engine in the MINI, the typical and proven sequence for upgrades are listed here. You can install each piece individually, or install one of Mini Mania's Stage kits for the best performance at the best price.

- 1) **ULTRIK/K&N Cold Air Intake**
- 2) **Cat Back Exhaust**
- 3) **ULTRIK Supercharger Pulley Upgrade**
- 4) **ECU Remap**
- 5) **ULTRIK Throttle Body Upgrade**
- 6) **Performance Camshaft**
- 7) **ULTRIK Exhaust Header**
- 8) **NGK Performance Plugs**
- 9) **ULTRIK High-Flow Cylinder Head**

Find the Mini Mania Stage Kit you need by model, year, and application.

## Cooper

### 2002 to 2004

#### Performance Street

Stage I <b>CIS</b>	NMK1001
Stage II <b>CEI</b>	NMK1015
Stage III <b>CEICH</b>	NMK1016

#### Off-Road

Stage II <b>CEIH</b>	NMK1012
Stage III <b>CEIHCH</b>	NMK1014

#### Suspension

Suspension Upgrade <b>S</b>	NMK1060
-----------------------------	---------

### 2005 - STAGE KITS COMING SOON

#### Suspension

Suspension Upgrade <b>S</b>	NMK1060
-----------------------------	---------

## PRODUCTS INCLUDED IN KITS:

<b>C</b> Catback Upgrade	<b>S</b> Suspension Upgrade
<b>E</b> ECU Upgrade	<b>C</b> Camshaft Upgrade
<b>I</b> Intake Upgrade	<b>H</b> Cylinder Head Upgrade
<b>H</b> Exhaust Header	<b>P</b> Spark Plug Upgrade
<b>P</b> Pulley Upgrade	<b>T</b> Throttle Body Upgrade

**CHT** Items carry core charges

## Cooper S

### 2002 & 2003

#### Boost Kit **EPP**

91 Octane	NMK1040
93+ Octane	NMK1041

#### Performance Street Stage Kits

Stage I <b>CIS</b>	NMK1005
Stage I w/Borla	NMK1055

#### Stage II **CEIPP**

91 Octane	NMK1010
91 Octane w/Borla	NMK1045
93+ Octane	NMK1011
93+ Octane w/Borla	NMK1046

#### Stage III **CEIPCHPT**

91 Octane	NMK1035
91 Octane w/Borla	NMK1042
93+ Octane	NMK1036
93+ Octane w/Borla	NMK1043

#### Off-Road Stage Kits

Stage II <b>CEIHP</b>	
205 HP w/o ECU <b>Z</b>	NMK1006
205 HP w/Borla w/o ECU <b>Z</b>	NMK1008
215 HP 91 Octane	NMK1007
215 HP 91 Octane w/Borla	NMK1051
215 HP 93+ Octane	NMK1013
215 HP 93+ Octane w/Borla	NMK1053
215 HP w/Evotech ECU	NMK1017
215 HP w/Evotech ECU w/Borla	NMK1018

#### Stage III **CEIHPCHPT**

Stage III w/o ECU <b>Z</b>	NMK1080
Stage III w/o ECU w/Borla <b>Z</b>	NMK1081
245 HP 91 Octane	NMK1030
245 HP 91 Octane w/Borla	NMK1044
245 HP 93+ Octane	NMK1031
245 HP 93+ Octane w/Borla	NMK1047

#### Stage II to III Upgrade

<b>CHT</b>	NMK1039
------------	---------

#### JCW Upgrade

JCW to Stage II <b>IST</b>	NMK1034
JCW to Stage III <b>IHPSCIT</b>	NMK1038

#### Suspension

Suspension Upgrade <b>S</b>	NMK1060
-----------------------------	---------

### 2004 & 2005 (except Cabrio)

#### Boost Kit **EPP**

91 Octane	NMK1040
93+ Octane	NMK1041

#### Performance Street Stage Kits

Stage I <b>CIS</b>	NMK1205
Stage I w/Borla	NMK1204

#### Stage II **CEIPP**

91 Octane	NMK1210
91 Octane w/Borla	NMK1245
93+ Octane	NMK1211
93+ Octane w/Borla	NMK1246

#### Stage III **CEIPCHPT**

91 Octane	NMK1235
91 Octane w/Borla	NMK1243
93+ Octane	NMK1236
93+ Octane w/Borla	NMK1244

#### Off-Road Stage Kits

Stage II <b>CEIHP</b>	
205 HP w/o ECU <b>Z</b>	NMK1206
205 HP w/Borla w/o ECU <b>Z</b>	NMK1208
215 HP 91 Octane	NMK1207
215 HP 91 Octane w/Borla	NMK1052
215 HP 93+ Octane	NMK1213
215 HP 93+ Octane w/Borla	NMK1054
215 HP w/Evotech ECU	NMK1217
215 HP w/Evotech ECU w/Borla	NMK1218

#### Stage III **CEIHPCHPT**

Stage III w/o ECU <b>Z</b>	NMK1281
245 HP 91 Octane	NMK1230
245 HP 91 Octane w/Borla	NMK1240
245 HP 93+ Octane	NMK1231
245 HP 93+ Octane w/Borla	NMK1241

#### Stage II to III Upgrade

<b>CHT</b>	NMK1039
------------	---------

#### JCW Upgrades

JCW to Stage II <b>IST</b>	NMK1037
JCW to Stage III <b>IHPSCIT</b>	NMK1038

#### Suspension

Suspension Upgrade <b>S</b>	NMK1060
-----------------------------	---------



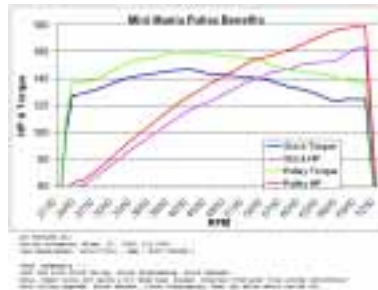
## ULTRIK Supercharger Pulley Upgrade Kit

**NME5011** Pulley & belt kit  
**NME5011-01** Pulley w/o belt  
**NME5010-02** Belt only  
 2002 - 2005 MCS



Get more POWER from your supercharged MINI Cooper 'S' with the effective and economical ULTRIK 3-piece Pulley Upgrade kit. A 15% reduction in the supercharger pulley diameter increases the boost by more than 4 pounds, resulting in a dyno-measured gain of over 20 horsepower AT THE WHEELS. Maximum boost is achieved at lower RPM, giving more power in the mid-range.

Pulleys reduced 17% or 19% may deliver more boost, but cause the supercharger to operate at higher RPM than it is designed to tolerate. At 15%, the ULTRIK pulley provides the most boost increase available without over-revving the supercharger at high engine RPM. The ULTRIK pulley gives you added power without undue stress on the OEM supercharger.



The ULTRIK three-piece unit allows installation of the pulley onto the shaft without a press and enables easy removal. We recommend the NME5011 kit which includes the correct length belt to keep the tensioner centered in its range, for best performance and reliability.

**See also:** **NME5018** Pulley Removal Tool pg. 4  
**NME5990** Belt Tensioner Tool pg. 4

## ULTRIK Throttle Body Upgrade

**NME6050**  
 2002 - 2005 MCS  
 ITEM CARRIES CORE CHARGE



More power and smoother acceleration for your MINI! The ULTRIK Throttle Body upgrade allows more air to flow into the engine for improved combustion, resulting in more horsepower and torque throughout the RPM range. You will also enjoy improved throttle response for better 'all-around' driveability.

The ULTRIK Throttle Body upgrade has been expertly developed to provide maximum airflow while still maintaining air velocity. With 62mm bore compared to 58mm stock, airflow is increased throughout the entire throttle range with a 15.7% flow improvement at wide-open throttle. Precision machined nozzle maintains high air velocity while the angle machined throttle plate ensures precision fit at closed throttle position.

## ULTRIK Water-to-Air Intercooler

**NME5005**  
 2002 - 2005 MCS

*Regain lost horsepower with a more efficient intercooler!*

The stock Cooper 'S' motor has an air-to-air intercooler that is limited in size by the available space, and limited in efficiency due to its location directly over the engine. Our tests have shown the Cooper 'S' is very sensitive to inlet air temperatures, quickly losing power as the inlet temperature increases.



The ULTRIK Intercooler greatly improves the efficiency of the intercooler by converting it to a water-to-air design. The innovative Laminar flow technology is 20% more efficient than other intercoolers due to a unique core design. The finned exterior on the cooler core creates a larger surface area than traditional "radiator" style coolers. The Laminar flow design also reduces pressure drop over other designs.

With a separate radiator behind the grille, the heat from the coolant (water) is effectively dissipated, allowing greater cooling of the compressed charge before it enters the combustion chamber. Your 'S' will perform like it does on a cold winter morning, even on a hot summer day!

The net effect is better torque, response and performance compared to conventional intercoolers.

The ULTRIK Intercooler bolts directly into the stock location. The coolant radiator installs in front of the engine radiator using existing mounting points.

- ♦ More airflow over the cooling elements
- ♦ Improved airflow exit path
- ♦ Minimal pressure drop within the intercooler
- ♦ Optimal radiator positioning away from engine heat

**Find out more on**  
**new.minimania.com**

**MINI MANIA**  
**TUNERS**

## CryO2 Intercooler Sprayer Kit

**NME5007**  
 2002 - 2005 MCS

The CryO2 is a revolutionary new, award-winning product designed to reduce the temperature of the air/fuel intake charge thus reducing power losses due to heat. Through the science of aerodynamics and cryogenics, this system harnesses the cryogenic properties of liquid CO2 to lower the air/fuel intake charge temperature by up to 60%. The system is modular and can be easily expanded.



The CryO2 Intercooler Sprayer mounts directly on top of the intercooler and vents the liquid CO2 directly onto the cooling fins, enhancing the performance of the intercooler by more than 50%.

## **ULTRIK Stage 1 Cylinder Head**

**NME6001**

2002 - 2005 MC / MCS

**ITEM CARRIES CORE CHARGE**

Designed specifically for street driven MINIs with stock valve springs and cam, the ULTRIK Stage 1 Cylinder Head package maximizes torque and HP within the portion of the powerband you spend the majority of your time driving in. The result is a smooth and broad power delivery.

Air flow in the ULTRIK Stage 1 Cylinder Head is increased an incredible 20% without sacrificing port velocity. Intake-exhaust interport relationship is also optimized for maximum power with efficiency. The combustion chamber has also been reprofiled for improved combustion properties.

Depending on parts used in conjunction with this Cylinder Head package, power gains are potentially in the 20-30 horsepower range.



## **ULTRIK Stage II Cylinder Head**

**NME6010**

2002 - 2005 MC / MCS

**ITEM CARRIES CORE CHARGE**

Stage 2 Cylinder Head with street port, 3 angle valve job, performance valve springs, match port intake, for use with cam upgrade.

## **Cylinder Head Gasket Kits**

**NME1060** Cooper 'S'

**NME1061** Cooper

**NME1071** Cooper, without bolts

**NME1072** Cylinder Head Bolts only

Includes all gaskets needed when replacing the cylinder head, plus new head bolts as recommended by BMW.

### **TECHNICAL DISCUSSION: AIRFLOW DYNAMICS**

The total air flow through a gasoline engine determines its maximum horsepower. At peak power, a racing engine will use 1.67 cubic feet of air per minute (CFM). To increase power output, either the air flow capacity must be increased or the air/fuel mixture charge must be burned more efficiently.

The flow bench is a measuring device designed to measure the air flow capacity of various engine components. Air is blown or sucked through the engine at standard air pressure and the air flow capacity is measured. In this manner, different parts can be compared and the effect of changes can be evaluated. The flow tests are conducted at constant peak air velocity, usually between 100 and 400 feet per second.

Additionally, an engine's efficiency and power can be increased considerably by taking advantage of natural dynamic effects which occur during the intake cycle. Both kinetic energy and resonant pulses can be harnessed to fill the cylinder with mixture. When the inlet closes, a pressure pulse bounces back out the intake track. By making intake track the proper length, the returning pulse can be timed to arrive at top dead center of the next cycle, pushing extra air in and keeping exhaust gas out.

## **M7/Venom Nitrous Oxide Kit**

**NME4400**

2002 - 2005 MCS

Nitrous Oxide injection is the ultimate in a go-fast button for your MINI Cooper 'S'.

The M7/Venom Nitrous System was designed specifically for the MINI, and was conceived with the safety of the engine in mind. Using a computerized control module, it continuously checks the O2 sensor for lean or rich fuel mixtures. The unit also checks the throttle position and fuel injector pulse width.

This dry nitrous system uses the fuel injectors for added fuel enrichment. We also offer larger fuel injectors, which gives you the option to safely go with a high horse power nitrous valve. The system is very simple—no buttons to push or counting to ten avoid blowing up the motor. Simply arm the M7/Venom system with the switch on the control module and when you are ready to start the nitrous flow, just give full throttle and the system will do the work for you. If the system senses a lean condition it will immediately shut off the nitrous flow, preventing engine damage.



## **ULTRIK Performance Camshaft**

**NME6045**

2002 - 2005 MCS

**ITEM CARRIES CORE CHARGE**

Cut to Mini Mania's exacting specifications by a major OEM supplier, this street performance cam increases horsepower and torque. The camshaft works with the stock cylinder head and valve springs. A great way to improve performance without disassembling the motor!

Intake: Duration 264, Lift 9.5mm, overlap 0.5, peak timing 114, open at 18, close at 66.

Exhaust: Duration 272, Lift 9.5mm, overlap 0.65, peak timing 114, open at 70, close at 22.

**OTHER CAMSHAFTS & GRINDS AVAILABLE – Call for info!**



## **Lightweight Crank Pulley**

**NME5030**

2002 - 2005 MCS

Performance gains through reduction of rotational mass in the engine is a tried and true concept. This lightened crank pulley for the MINI Cooper S is CNS-machined from premium 6061-T6 aluminum billet, and maintains the stock diameter while losing about 75% of the stock weight. The reduced rotational weight has shown increases in horsepower and torque across the entire RPM range (maximum gains @ 4000 rpm).



## **Cylinder Head Studs**

**NME1075**

BMW recommends replacing the head bolts each time the cylinder head is removed. Do the job just one time with this head stud kit.





## Performance Spark Plugs

**NME3011** *Sold individually*

We have selected the NGK Iridium IX Spark plug to run with cars equipped with the high performance supercharger pulley. This Iridium IX plug rated a step 'cooler' than stock, features a .6mm iridium center electrode which offers superior ignitability without sacrificing durability. The tapered ground electrode increases flame kernel expansion, while the superior heat range design is ideally suited to the demands of high performance environments. Gap should be checked and set at .035" before installation.



### Advantages of Iridium spark plug types

Because of the properties of Iridium, the spark plug's centre electrode can be made with a much smaller diameter (0.6mm) than with platinum, gold or gold palladium and copper/nickel types. As much as 5,000 volts less 'spark jump' voltage is required compared to standard plug types. Ignition is improved and less strain is placed on the ignition system, producing better fuel economy, increased power/acceleration, and especially better throttle response.

**Iridium** is 8 times stronger and 6 times harder than platinum, and has a melting point 1200 degrees higher. The result is a plug that requires less voltage to spark, burns more of the fuel in the cylinder, and can spark at LEANER air/fuel mixtures, resulting in higher horsepower and better gas mileage. Although the plugs are expensive, they last much longer than conventional spark plugs. (Longevity will vary by usage, fuel mixture, and other factors.)

## NGK Spark Plugs

**NME3010** *Sold individually*

A good replacement for stock spark plugs. 14mm, 3/4", 2 ground electrodes. NGK BKR7EKU.

## Nology Hotwires

**NME3001** *Black*

**NME3001B** *Blue*

**NME3001R** *Red*

**NME3001Y** *Yellow*

**2002 - 2005 MC / MCS**

Nology HotWires are the most technologically advanced ignition wires available. HotWires are engineered with an exclusive built-in capacitor which creates the most powerful spark possible. This revolutionary design allows energy from the ignition coil to accumulate in the capacitor until the voltage at the spark plug electrodes reaches the ionization point. At that split second, the entire power of the stored spark is discharged at once, creating a spark 300 times more powerful than normal. The result is faster, more complete combustion, and most importantly, MORE HORSEPOWER that's 100% smog legal.



## 8mm Plug Wire Set

**NME3002** *Black*

**NME3002B** *Blue*

**NME3002R** *Red*

**NME3002Y** *Yellow*

**2002 - 2005 MC / MCS**

High quality plug wires that not only provide great performance but also allow you to color balance your engine compartment. Plug wire set has 8mm carbon core with black silicone jacket and premium factory style plug connectors.



## Shark Injector ECU Upgrade

**NME4100** *93+ octane fuel*

**NME4101** *91 octane fuel*

**2002 - 2005 MCS - US Spec MINIs Only**

Introducing the first true 'plug-and-play' ECU upgrade option for the new MINI Cooper 'S', The MINI Shark Injector. The MINI Shark Injector combines an unbeatable low cost with the ultimate in convenience. The MINI Shark Injector plugs into the data port of your MINI and with the push of a button the pre-programmed upgrade is downloaded to your ECU. (Requires a minimum 10 Amp battery charger and 40 minutes for preparation, programming, and confirmation.) Returning the settings to stock is just as easy, simply press the button again.



The MINI Shark Injector, developed by Motronic expert Jim Conforti, provides the ultimate in performance. The modified software, optimized for two gasoline octane ranges, adjusts the ignition timing and fuel curves which results in increased performance. Compared to other ECU program upgrades available, the MINI Shark Injector provides superior performance throughout the entire RPM range while maintaining a safe margin for engine life. The MINI Shark Injector also provides an increase in the factory rev-limit, allowing for optimum shift points for maximum acceleration. Not only does it re-map part-throttle fuel and spark, it also re-maps areas other tuners don't touch - such as acceleration enrichment and transition fueling (how the car responds to rapid change in pedal).

FOR USA & CANADA VEHICLES ONLY. NO RETURNS ON THIS PRODUCT UNLESS THE PRODUCT IS DEFECTIVE. (Standard Mini Mania policy for electrical components.)

## Evotech ECU Remap for Cooper

**NME4001**

**2002 - 2005 MC**

Enhance the performance of your Cooper with this ECU upgrade from Evotech. Designed to work with stock and upgraded Coopers, this software corrects the air/fuel mixture and timing for optimum performance. Improve your 'off-line' and mid-range response as well as peak horsepower.

## Plasma Booster

**NME4110**

**2002 - 2005 MC / MCS**

The Plasma Booster is a revolutionary Ignition upgrade to enhance existing INDUCTIVE type ignition systems from distributor ignition to single coil applications and everything in between, including waste spark ignition. The added spark current produces additional horsepower, torque and better fuel economy, with complete integration to the MINI's computer system. Tests have shown a 4 HP gain and 10% increase in fuel economy. Installation takes only minutes with no special tools.



### Highlights

- Easy to install.
- 100% secondary current (Spark Amperage) increase
- 4 Times Spark Energy Increase for the initial spark discharge
- Compatible with all OEM components
- Compatible with OBD-II (On-Board-Diagnostics)



**ULTRIK Lightweight Flywheel****NMG2001** *Cooper***NMG2000** *Cooper 'S'*

2002 - 2005

Reducing the weight of the flywheel will noticeably improve acceleration. The ULTRIK Aluminum Flywheel carries less than half the weight of the stock "S" version, and is ideal for both street and mild race use.

This flywheel weighs only 12 lbs. and is made of 6061 T6 tempered alloy with a .25" thick replaceable friction plate. This long lasting plate is retained with 16 screws for maximum security. One of its major advantages is that it will work with either the stock clutch disc or one of the several special discs available from Mini Mania.

**AP Racing Clutch Disc****NMD1002**

2002 - 2005 MC

From AP Racing, a leader in performance products comes this uprated clutch disc for the MINI Cooper model (with 5-speed transmission). The disc will greatly enhance the grab of the clutch and prolong clutch life under aggressive driving!

**Performance Clutch Kits**

2002 - 2005 MC / MCS

Four stages to cover the full performance spectrum for both the Cooper and 'S'! Choose the upgrade that's right for your driving style and goals. Kits include clutch disc, high clamp pressure plate, throwout bearing, and alignment tool. **Lightweight pressure plate** option is also available for all kits; call for details.

**Stage One: High Performance Street Kit**

Steel-backed woven organic disc.

**NMG1610** *Cooper***NMG1600** *Cooper S***Stage Two: Casual Autocross Kit**

Shown above. Segmented chatter-free Kevlar disc.

**NMG1611** *Cooper***NMG1601** *Cooper S***NMG1601L** *Lightweight, Cooper S***Stage Three: Casual Drag Race Kit**

Three-piece carbon or ceramic disc. The ultimate street/strip clutch!

**NMG1612** *Cooper***NMG1612L** *Lightweight, Cooper***NMG1602L** *Lightweight, Cooper S***Stage Four: Race Kit**

Two-piece rigid disc, for serious road or drag racing.

**NMG1613** *Cooper***Tilton 8.5" High Performance Flywheel/Clutch****NMG1500**

2002 - 2005 MC / MCS

When you are serious about racing and making a serious effort to win at the track, then you need your car at its best. The Mini Mania lightweight steel flywheel provides the best performance and has been engineered to last. This special flywheel has been built by Tilton to our very exacting standard and has been race tested to be the best. The complete system includes a 10 lb. (low inertial mass) flywheel, a 8.5" cerametallic clutch disc, pressure plate, throwout bearing adapter and hardware kit. (Note: dead weight is not the same as rotating weight/inertial mass.)

**OEM Replacement Parts****NMG1210** *Cooper, Disc only***NMG1211** *Cooper, Disc/Plate/Bearing***NMG1220** *'S', Disc only***NMG1221** *'S', Disc/Plate/Bearing***ULTRIK Skid Plate Sump Guard****NMA3041**

2003 - 2005 MC / MCS

Even a stock MINI is fairly low to the ground and if you lower the car at all you should protect the bottom of your drive train. Our steel skid plate replaces the factory's plastic deflector, but extends much further to protect the power steering cooling fan. For cars with production date of 04/03 and later.

**Power Steering Fan Shield****NMA3042**

2002 - 2005 MC / MCS

Any road debris which gets caught in the power steering pump cooling fan will blow the fan's fuse – when this happens, you lose power steering! This easy to install, stainless steel fan guard buys peace of mind for a low price.

**Transmission Fluid****NMG7299**

By Redline. 1 litre; transmission capacity is 1.7 litres.

## Phantom Grip Limited Slip Differential

### NMG1100

2002 - 2005 MCS

Why do you need a Limited Slip Differential (LSD) when you have DSC? The DSC is designed for 'safety' at the limits, while the LSD is designed for improved performance. When the DSC detects traction loss at a wheel, the system scrubs energy (applies the brakes) to restore traction at that wheel. In comparison, when a LSD detects traction loss, it transfers the energy from the wheel losing traction to the wheel with traction, to continue controlled motion. The difference is the 'transfer' of energy instead of 'scrubbing' energy. For high performance driving, LSD is the answer.

Phantom Grip serves two distinctive functions in your street or race Cooper S. First, it functions as a disc-type limited slip in cornering and braking. Disc plates exert pressure against spider gears using spring pressure to regulate the amount of slippage at the wheels, helping to accelerate earlier, while exiting corners at a higher speed.

Secondly, the Phantom Grip works as a locker in hard acceleration. The disc plates pivot, locking spiders, causing both wheels to exert equal power to the road, providing less torque steer than an ordinary differential. With over 120,000 miles of testing, there has been no significant wear of these plates. Although seemingly simple, the Phantom Grip offers as much maximum traction as other limited slips. The Phantom Grip is extremely strong and durable and comes with a Lifetime Warranty against breakage and manufacturer defects.



## Race Spring Upgrade Tuning Kit

### TK100

Full race upgrade. If your use of the Phantom Grip LSD will be limited to a race track then you should have this simple to use upgrade kit. The internal springs are designed to work with increased horsepower and traction demands.

## ULTRIK Limited Slip for 5-Speed

### NMG1001

2002 - 2005 MC

For the serious competition driver, a limited slip differential is essential! The stock MINI Cooper has excellent handling, but hard driving can still result in wheel spin. The ULTRIK Limited Slip Differential is the solution. Although designed for the race track, it provides a soft enough engagement to make it ideal for the street autocrosser. The ULTRIK Limited Slip is supplied complete with final drive ratio of your choice: 3.94 (as stock), 4.29 or 4.54. Using 4.29 or 4.54 will need a pinion, available at extra cost.



## 5-Speed Transmission w/Limited Slip

### NMG1006

2002 - 2005 MCS

5-speed limited slip differential with a special 4.54 final drive ratio. This kit includes the ULTRIK 5-speed LSD, special ring gear and a matching pinion.

## Quaife Limited Slip Differential

### NMG1005

2002 - 2005 MC / MCS

The Quaife Differential powers both drive wheels under nearly all conditions, instead of just one. With an ordinary open differential, standard on most cars, a lot of precious power is wasted during wheelspin under acceleration. This happens because the open differential shifts power to the wheel with less grip (along the path of least resistance). The Quaife, however, does just the opposite. It senses which wheel has the better grip, and biases the power to that wheel. It does this smoothly and constantly, and without ever completely removing power from the other wheel.

In drag-race style, straight-line acceleration runs, this results in a close to ideal 50/50 power split to both drive wheels, resulting in essentially twice the grip of an ordinary differential.

In cornering, while accelerating out of a turn, the Quaife biases power to the outside wheel, reducing inside-wheel spin. This allows the driver to begin accelerating earlier, exiting the corner at a higher speed.

The Quaife also controls loss of traction when the front wheels are on slippery surfaces such as ice and snow or mud, providing the appropriate biased traction needed to overcome these adverse conditions. The Quaife Differential provides constant and infinitely variable drive. Power is transferred automatically without the use of normal friction pads or plates seen in other limited-slip designs.

The Quaife is extremely strong and durable and since it is gear operated, it has no plates or clutches that can wear out or need costly replacement.

The Quaife is great for street driving or racing. Racers don't have to put up with locking mechanisms or spools that tear the steering wheel out of their hands when cornering. Because it behaves like an open differential during ordinary driving, street drivers will have trouble telling it's there until pushing the car's limits.

The Quaife has been proven in everything from SCCA Rally to Formula 1. It provides autocrossers with such an advantage, it is considered "required" equipment for a winning effort.

**See Also:** Differential Carrier Bearings, NMG1019



## ULTRIK Limited Slip for 'S' 6-Speed

### NMG1002

2002 - 2005 MCS

The ULTRIK Limited Slip Differential for the Cooper 'S' 6-speed transmission enhances exit speeds from tight corners by greatly reducing inside wheel spin. It is a great choice for the performance oriented driver on or off the track. Its salisbury clutch insures smooth operation and superior responsiveness, while its small size and light weight add to its effectiveness. Can easily handle 250 horsepower. **NOTE:** It is highly recommended that the car be set up with a minimum of .050" toe-in.

**See Also:** Differential Carrier Bearings, NMG1019



## Differential Carrier Bearings

### NMG1019

2002 - 2005 MCS

Highly recommended when installing a Quaife or other Limited Slip Differential. Sold individually; two required.

## ULTRIK Short Shift Kit

NMD1020 2002 - 2003

NMD1025 2004 - 2005

MC / MCS

Smooth, accurate and much quicker shifting is now a reality. The ULTRIK Short Shift kit will reduce the shifter movement between gears by almost 20%. The ULTRIK Short Shifter is easier to install than one-piece designs, while assuring rigidity and reliability. The extension is simply slipped on and pinned to the bottom of the stock gearshift lever. There is no need to remove the entire shifter or replace the shift knob; everything visible inside the car — shift boot, knob, etc. — remains stock. The kit includes a new bottom dust cover and sealant to protect the modified shift box area. Includes detailed instructions.



## ULTRIK Close Ratio Gearset

NMG3000

2002 - 2005 MCS

ULTRIK's exclusive close ratio gear set for the Cooper 'S' will quickly transform your stock transmission into an enthusiast's delight. The close ratio gears will result in a feel and actual acceleration as if you added another 100 HP.



All engines are designed to operate within a certain RPM range to maintain maximum performance. While combining the optimum with the average street driver is the job of the factory, it is our job to optimize it for the real driving enthusiast. The factory rated top of speed of 164 MPH is great for economy and bragging rights but not practical for the real performance driver. To achieve this exaggerated number, the final drive ratio is too tall and the spacing between gears does not take maximum advantage of the power band of the motor.

The ULTRIK gear kit provides a taller first gear, an appropriately-spaced 2nd gear, and a pair of lower final drive ratio gears (a 'pair' is required to make a single change in the box). This gearset requires the replacement of the reverse gear, which is also included.

Gear Ratios:	1st	2nd	3rd	4th	5th	6th
Stock 'S'	11.418	7.176	5.399	4.410	3.652	2.984
ULTRIK Close Ratio Gear Set	9.370	7.792	6.516	5.323	4.344	3.549

## 6-Speed Transmission with Close-Ratio Gearset

NMG3001

2002 - 2005 MCS

ITEM CARRIES CORE CHARGE

Complete, ready to install, close ratio gearbox. These factory original gearboxes have had the ULTRIK close ratio gear set (NMG3000) already installed. It is the ideal 'plug and play' performance component! (Be sure to send us back your old one for the core refund.) Limited slip differentials are also available separately, or we can ship your gearbox with your choice of LSD installed.



## ULTRIK 5-Speed Straight-Cut Close Ratio Gear Kit

NMG1003

2002 - 2005 MC

ULTRIK's exclusive close ratio gear set for the MINI Cooper will quickly transform your street car into the ultimate road racer. The 'dog' engagement style gears shift quickly and last a very long time. The close ratio gears will result in a feel and actual acceleration as if you added another 100 HP. The gear ratios are 3.417 in 1st, 2.333 in 2nd, 1.788 in 3rd, 1.429 in 4th and 1.208 in 5th.



## Performance Driveshafts

NMD2101 Left side

NMD2102 Right side

2002 - 2005 MC / MCS

For the modified MINI with extra horsepower, here is an upgrade to help avoid future problems. The factory drive shafts have shown to be a weak link on some track cars; this upgraded drive shaft is designed to take the punishment on and off the track for reliable performance. Order one each of NMD2101 and NMD2102 for a matched set.



## Air Cleaner Element

NME2001 Cooper

NME2101 Cooper S

2002 - 2005

Replace your stock filter with washable, reusable foam for better air flow and performance. There is no easier way to pick up horsepower than simply changing your air filter. This high-tech filter will not only reduce the dirt getting into your engine, but the air flow increase will result in a consistent performance increase over the entire RPM range.



## K&N Air Filter Element

NME2005 Cooper

NME2009 Cooper 'S'

2002 - 2005

K&N offers high air flow with excellent filtration. Designed to increase horse-power and acceleration, this filter is washable and reusable. Lasts up to 50,000 miles before cleaning is required (depending on driving conditions). Ten Year / Million Mile Limited Warranty from K&N.



## K&N Filter Care

NME2011 Cleaner, 14.5 oz

NME2010 Filter Oil, 5.5 oz

To get the maximum benefit from your K&N filters they should be cleaned and re-oiled periodically. We recommend using K&N filter cleaner and filter oil spray to improve filter effectiveness.





## ULTRIK Cold Air Intake Upgrade

**NME2002**

2002 - 2005 MC

All automotive engines are sophisticated air pumps and thus an efficient air delivery system is critical to performance. The dyno-engineered ULTRIK Cold Air Intake System improves air flow, performance and filtration. It maximizes the ram air intake while still keeping the air as cold as possible, insuring maximum air density and optimum horsepower. Real horsepower gains have been reported on many independent dynos.

Kit includes a redesigned intake, housing cover, and a high performance filter element which is washable and re-usable. Use NME2001 or NME2005 as replacement filter if needed.



## ULTRIK / K&N Cold Air Intake System

**NME2030**

2002 - 2005 MCS

The dyno-engineered ULTRIK/K&N equipped cold air intake system improves airflow, performance and filtration, resulting in cooler and more efficient air delivery to the supercharger. Dyno results show a less restrictive intake delivering cooler air means more power from your engine. Our polished stainless steel airbox uses a wider design to enable better airflow across the entire filter. The filter is a re-usable K&N unit known for its high flow characteristics. The high pressure area at the base of the windshield directs outside air into the airbox through the existing bulkhead opening. The ULTRIK airbox has a removable plate which allows the use of the NMS4006 ULTRIK Titanium front strut brace.



When performance is the desired outcome, only **ULTRIK** brand offers race-tested quality backed by a warranty that is the envy of the industry. Demand ULTRIK brand for all your performance modifications.

## K&N Induction Kit

**NME2006** *Cooper (shown at right)*

**NME2012** *Cooper, High gloss red*

**NME2004** *Cooper S, Polished aluminum*

**NME2003** *Cooper S, High gloss red*

**NME2014** *Cooper S, Silver (shown below)*

2002 - 2005

K&N Cold Air Intake System with K&N's high flow filter offers increased air volume and velocity combined with excellent filtration. Designed to increase horsepower and acceleration, this filter is washable and reusable. Lasts up to 50,000 miles before cleaning is required, and carries a 10 Year / Million Mile Limited Warranty from K&N.



## Remote Oil Cooler

**NME1055-01**

2002 - 2005 MCS

Forced induction motors tend to run hotter than normally aspirated engines. As oil temperatures climb, the working viscosity of the oil will reduce – along with its ability to isolate the bearing from any mechanical abuse!

Add this high flow, high efficiency oil cooler to your MINI to help reduce operating temperatures and extend engine life. Effective in all climates, but especially helpful on the track. Kit includes a adapter plate that attaches on the rear of the motor beside the stock oil filter. Metal braided lines then carry the oil to the cooler, which can be mounted in a number of locations in the front of the engine bay.



## High Capacity Radiator

**NME8010**

2002 - 2005 MC

For the modified MINI, this aluminum radiator upgrade improves cooling efficiency keeping your core engine temperatures down. With 16 fins per square inch and 40mm tubes, this radiator offers 30% greater capacity, and allows more direct contact between the tube and fins, increasing the radiator's ability to dissipate the heat out of the coolant. Furnace brazed construction makes this radiator very strong and resistant to damage from road and track debris.



## Silicone Hose Kits

**For MINI Cooper:**

**NME8000BL** *Blue*

**NME8000/BLK** *Black*

**NME8000/RED** *Red*

**NME8001** *MC Clamp kit*

**For Cooper 'S':**

**NME8002/BL** *Blue*

**NME8002/BLK** *Black*

**NME8002/RED** *Red*

**NME8002/YLW** *Yellow*

**NME8003** *MCS Clamp kit*



This hose kit is complete with top and bottom radiator hoses and the heater hose. Silicone lasts forever and does not degrade with heat, time and environmental conditions. This kit is ideal for both the racer who never wants a failure and the daily driver who wants to forget about hose problems.

## MINI Power Steering Cap

**NMA3050**

Dress up your engine compartment with this nicely polished cap for the power steering reservoir.



## Radiator Reservoir

**NME2040**

Replace your leak prone plastic radiator reservoir tank with this polished aluminum version. Attractive and durable beyond belief, this new addition will brighten up your engine bay!



## Reservoir Cap Cover

**NME2041**

Polished aluminum alloy cap cover for NME2040.



## ULTRIK Exhaust Header

**NME1004**

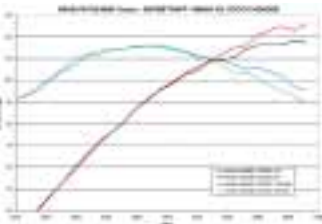
**NME1003** w/o catalytic converter

2002 - 2005 MC / MCS

The ULTRIK Performance Exhaust Header with high performance, high flow EPA approved catalytic converter. This unit improves the performance of your MINI Cooper or Cooper S most noticeably in the mid RPM range, with a very measurable increase in torque. The graph below from a customer dyno shows improvement in HP from about 4300 RPM, and torque improvements from about 3800 RPM. Maximum HP and torque is up over 7%.

Made of polished stainless steel, with 4 into 2 into 1 design, this header features equal length primaries and is threaded for oxygen sensors.

Easy to install as a direct replacement for the stock unit with no modifications necessary, which means it can be installed for a weekend of performance driving and then removed just as easily. Fits Cooper and Cooper S. **For off-road use only.** Use NME1003 (without catalytic converter) for use with fuel additives, track racing fuel or for sustained high-speed track driving. These conditions can cause excessive heat in catalytic converter.



## Exhaust Header Gasket

**NME1007**

2002 - 2005 MC / MCS

Works with both OEM and ULTRIK Performance Header.

## Cat Back Exhaust System

**NME1001**

2002 - 2005 MC

A Mini Mania exclusive in stainless steel. Features larger primary pipe with low restriction muffler. This two-piece flanged system uses factory mounting locations for easy installation (NO cutting required). Great sound with increased performance. Rated "best performance improvement" by magazines. Every system includes an easy to install and remove 'Quiet Tip' (NME1006) for extra quiet operation for long distance drives. Does not fit Cabrio.

## Performance Exhaust

**NME1015**

2002 - 2005 MC

**Muffler section only.** Here's a cost effective means to upgrade the performance feel of your MINI Cooper. This polished stainless steel system provides just the right amount of exhaust note for the performance minded driver while adding a small gain in HP. And the 4" diameter polished sport tip looks great! Easy to install, just cut your existing front pipe and slip the new system in place. Uses the factory hangers and includes one high quality clamp. The Quiet Tip Insert (NME1006, available separately) can be used with this system for a 'milder' tone on long road trips. Not for Cabrio.

## 'S' Performance Exhaust

**NME1022**

2002 - 2003 MCS

Unique twin sequential muffler exhaust system increases horsepower while improving the exhaust note for a more aggressive (but not offending) sound. Uses factory mounting points for simple installation; made of stainless steel for durability. 2 1/2" inside diameter. Fits Cooper 'S' produced through Dec. 2003.

## Borla Catback Exhaust

**NME1023**

2002 - 2005 MC

Built of aircraft-quality T-304 stainless steel, the Borla Cooper Cat Back system is a great upgrade from the factory unit. Simple slip-fit design for ease of installation. Borla quality with low noise level and good tone.

## Borla "Sport" Catback

**NME1021** 2002 -12/03

**NME1019** 1/04 - 2005

MCS

This street-legal Borla Cooper S Cat Back is a sport version of the popular street system shown above. Simple slip-fit design offers slightly improved performance with a much more aggressive tone. 2 1/2" inside diameter.

## Borla 'S' Twin Catback System

**NME1020** 2002 -12/03

**NME1018** 1/04 - 2005

MCS

Built of aircraft-quality T-304 stainless steel, this Borla Cooper S Cat Back system is a great upgrade from the factory unit. Simple slip-fit design for easy installation. Borla quality with an aggressive tone.

## Quiet Tip Exhaust Insert

**NME1006**

Fits NME1015 and NME1001; included with purchase of NME1001.

## Borla Exhaust Venturi

**NME1024**

If your new Borla Sport is just a little too loud for you these inserts will take the edge off. Insert the venturis just after the muffler, before the tips. Tack weld them in place and you're all set! For Cooper 'S', sold per pair.



## ULTRIK Lowering Springs

### NMS1003

2002 - 2005 MC / MCS

Why change your springs? Performance minded drivers want the best they can get! The factory set-up is very good but is ultimately a compromise for all types of drivers, from performance-minded enthusiasts to those that only drive their MINI to the theater carrying four adults.

Mini Mania has many years of experience in performance tuning and this expertise has been applied to the New MINI. The ULTRIK Lowered Spring Set is designed for the aggressive street driver who may want to take his or her MINI to the track from time to time. These springs lower ride height approximately 1" (1/2" for Sport Suspension), providing improved handling while retaining excellent ride quality. Spring rates have been optimized and are similar to factory rates.

Manufactured by a shop that often builds for race teams, each spring is precisely measured to insure uniformity and performance to Mini Mania's exclusive specs. Set of four springs can be used with either stock or upgraded shocks. For MINI Cooper with build date March 2, 2002 and later.



## High Performance Suspension Upgrade Kit

### NMK1060

2002 - 2005 MCS

Motor Trend Magazine says  
**"You gotta love a front-driver that can get into the elite 70-mph slalom club."**

(Feb. 04 Issue)



This is the suspension set-up on the car tested by Motor Trend. A balanced combination of lowering springs, adjustable shocks, fully adjustable rear sway bar, adjustable rear control arms, and a titanium strut bar. Have full control over rear camber, toe-in, and rebound to precisely dial in your suspension. Whether you autocross or road race, this kit gives you the flexibility to suit your driving style. Professional installation is recommended.

## KW Two-Way Adjustable Coilovers

### NMS3012

2002 - 2005 MC / MCS

These new KW Coilovers are state-of-the-art technology for the discriminating drivers who want to track their cars. The separate and independent compression and rebound damping allows a truly individual driving set-up. They feature stainless steel construction and 2.25" race-style springs. If you're serious about tracking your MINI these are the coilovers for you. This race-tuned system is street-legal.



## SPAX, BILSTEIN and LEDA

Premium shocks and coilover kits by SPAX, Bilstein and LEDA are available by special order. Call our sales technicians for pricing and delivery.

## KONI Coilovers for STREET/PERFORMANCE

### NMS3050

2002 - 2005 MC / MCS

This system is for the street MINI that wants improved handling performance without sacrificing ride quality - a difficult task at best. This KONI system does better - it actually improves ride quality over stock! KONI designs dampers and develops springs to match the dampers, not the other way around. This system is height adjustable with rebound damping adjustment.

The KONI SPORT KITS offer you more fun through:

- A sportive and aggressive look for your car
- The ultimate in driving experience, adjustable to your personal need
- Limited vehicle roll and improved stability during cornering
- More safety due to improved road holding performance
- TÜV certificate for all European car models
- KONI Quality & Limited Lifetime Warranty



## KONI Shock Kits

### NMS3001 Front

### NMS3002 Rear

2002 - 2005 MC / MCS

Upgrade your MINI suspension with KONI adjustable shocks for improved ride control and handling. Can be used with original equipment springs or with a performance spring upgrade.

At the softest setting (recommended for stock springs), these shocks offer slightly softer compression with a slightly stiffer rebound, eliminating the 'bounciness' experienced with the stock shocks. Depending on your driving style, you can stiffen the shocks for more spirited driving or track applications.

KONI's shocks are built to last a lifetime and carry a lifetime warranty to the original purchaser for as long as you own the vehicle.

For Coopers with production date of Mar '02 or later, all Cooper S.



## KONI/ULTRIK Suspension Kit

### NMK1009

2002 - 2005 MC / MCS

This kit makes tuning your suspension a simple task. KONI quality combined with Mini Mania performance insights produces a shock/spring package to turn your already great car into an outstanding drivers' car. The adjustable front and rear KONI shocks (NMS3001, NMS3002) provide improved ride control and handling, and the ULTRIK Spring Set (NMS1003) lowers your MINI just enough for even better handling while adding a stylish look.





## ULTRIK Adjustable Rear Sway Bar

NMS2002

2002 - 2005 MC / MCS

Designed for the enthusiast who needs a greater range of handling response, the ULTRIK

Adjustable Rear Sway Bar features slider links that allow for quick and easy adjustment for street and track driven MINIs. These sliders are not limited to a few fixed positions as in other sway bars, and allow you to tune your MINI's chassis stiffness to your exact

requirements for optimal cornering and turn-in response. The system's 19mm bar is thicker than the 17mm stock bar, and can be used to balance the chassis and eliminate the understeer inherent in a front wheel drive design. Suitable for street and race applications. Premium quality, all hardware and instructions are included.

## ULTRIK Titanium Strut Brace

NMS4006

2002 - 2005 MC / MCS

The ULTRIK Titanium Strut Brace ties together the two front upper strut towers, significantly reducing flex in the forward part of the chassis. This results in better front wheel traction and a much more stable feel during cornering and over road imperfections. Our titanium strut brace is stiffer than tubular braces, and is a must for cars with lowered suspensions or "plus" tire/wheel combinations. Designed for use without adjustable camber plates. Easy bolt-in installation. Can be used with stock or coilover suspension. Kit includes brace, mounting plates, and fasteners.

## Lightweight Front Sway Bar

NMS2003

2002 - 2005 MCS

Getting the correct balance for the handling on a MINI is not only a matter of taste and driving style but can also be controlled by the rules of a particular race group. If you have to use non-adjustable sway bars to control body roll, then this might be your answer.

A stock "S" suspension has both a front and rear sway bar but for the sake of overall safety, the car is designed to understeer or 'push' when driven hard into a corner. The most often used correction for this problem is to install a larger rear bar. If this is not an option for some reason, then the answer is to install a smaller front bar. The stock "S" front bar is 24mm diameter; this bar is 16mm - enough to make a nice improvement in cornering ability. Installation requires two sway bar bushings, NMS2003B.

## Sway Bar Bushings

NMS2003B

Sold individually; two needed for sway bar replacement.

## Carbon Fiber Strut Brace

NMS4007

2002 - 2005 MC / MCS

This 100% carbon fiber strut brace is INCREDIBLE! Not just a piece of cosmetic jewelry so common in the market, this strut tower brace is a precision crafted structural component from one of the most respected composite manufacturers in the industry. Extremely lightweight and twice as strong as aluminum. The show-quality autoclave process carbon center bar (not carbon fiber covered metal) is mounted to the car with lightweight CNC machined aluminum towerplates. Its hinge-free design ensures maximum reduction in chassis flex. Comes complete with a remolded ECU cover to allow proper clearance.

## Aluminum Front Strut Brace

NMS4008

2002 - 2005 MC / MCS

Provides same benefits as NMS4006, with higher weight and lower cost.

### Technical Discussion: SWAY BARS

Tuning the suspension of a MINI is practice in compromise. A softer suspension makes a more comfortable ride on the street, while a stiffer suspension enables faster turns and more precision in performance driving. These two qualities are at opposite ends of the spectrum, and the driver of any dual-purpose car will be seeking a balance point somewhere between the extremes.

Body roll – the tendency for the body to lean outward in a turn – is the major factor which causes tires to lose grip. Without a sway bar, a car's suspension needs to be adjusted to a much stiffer setting in order to handle the body roll. By installing a sway bar, the driver benefits from safer handling of the car in performance situations while still maintaining softer and more comfortable suspension settings for regular street driving.

To reduce the MINI's inherent understeer, the first step is to *introduce some oversteer* by installing a rear sway bar (NMS2002). As a driver gains more experience and requires more precision in his or her performance driving, the next step would be to *remove some understeer* by replacing the MINI's stock front sway bar with a lighter, smaller-diameter bar (NMS2003).

Don't confuse sway bars with *strut bars*, which control chassis flex and have a different effect on handling. See product descriptions above and opposite for further details.

**Understeer** means the *front* of a car tends to go straight in a turn when the tires lose traction.

**Oversteer:** a condition where the *rear* of a car tends to go straight – that is, swing outward – in a turn when the tires lose traction.

**Understeer and Oversteer** are caused by weight imbalance between the front and rear of the car. Cars heavy in the front – such as front-wheel-drive MINIs – will understeer; cars heavy in the rear will oversteer.

## Rear Strut Brace

### NMS2020

2002 - 2004 MC / MCS

It is a well publicized fact that maintaining the chassis stiffness of any car will improve handling. Anytime you can do it cost-effectively and unobtrusively you are ahead of the game. The rear of the MINI does not have as much horizontal stabilization as the front, and over time it can begin to flex. This rear strut bar allows you to apply a preload to the rear of the chassis. This helps stabilize the rear of the car, keeping it from flexing under heavy stress, and helps maintain the MINIs rear suspension geometry in the corners. Easy installation with basic tools. Not for Cabrio models.



## Solid Rear Trailing Arm Bushings

### NMS5120 pair

2002 - 2005 MC / MCS

High performance suspension components use stiffer material to minimize unwanted play which can cause 'sloppiness' on the track. If you've already upgraded the rest of your suspension for the track and you need that final bit of precision, this solid rear trailing arm bushing is your answer. Precision machined to exacting tolerances, this trailing arm bushing has NO play!



## Bump Stop Kit

### NMX5101

2002 - 2005 MC / MCS

Protect your front struts from dust and corrosion with this quality bump stop and dust cover. The universal bump stop has a unique tapered bore. A durable shock absorber cover ties securely to the shock absorber body, protecting the central shock rod from stop damage and corrosion. Kit includes two bump stops and two shock covers.



## PowerFlex Poly Bushes

NME5102 Lower Engine Mount, lg

NME5103 Upper Engine Mount, sm

NME5104 Upper Engine Mount, lg

NMG5101 Gearbox Mount

NMS5101 Front Wishbone, rear (pair)

NMS5102 Steering Rack Mount

NMS5103 Rear Trailing Arm (pair)

NMS5104 Rear Control Arm (8 pcs)

NMS5105 Front Anti-Roll Bar, 22.5 mm (pair)

NMS5106 Front Anti-Roll Bar, 24 mm (pair)

NMS5107 Rear Anti-Roll Bar (pair)

2002 - 2005 MC / MCS

POWERFLEX prolongs tire life, improves performance and increases safety. Correctly formulated polyurethane is better than rubber at noise, vibration and harshness suppression. POWERFLEX bushes improve your cars' road holding and chassis performance by reducing the amount of unwanted flex in the suspension. Your suspension does a better job keeping your tires in contact with the road, therefore improving safety and performance.

Even new cars benefit from POWERFLEX bushes due to more effective control of the suspension components. These bushes can be 25 - 25% stiffer than new rubber items with exactly the same noise absorbing properties.



## ULTRIK Rear Control Arms

### NMS5010

2002 - 2005 MC / MCS

ULTRIK's adjustable rear control arm set results in improved handling and quicker turn-in response. It is a must-have for serious performance driving for track days and autocross competition. Street cars with lowered ride heights, shorter springs and coilover systems will also benefit from the improved capabilities of the ULTRIK adjustable control arms.

The ULTRIK Rear Control Arm Set consists of four weld-free adjustable control arms, pre-assembled with high quality oversize heim joints and threaded for quick and accurate full adjustment of rear toe and camber. Weldless construction includes flat wrench notch for easy adjustability. Our four adjustable arms achieve greater flexibility of adjustment than two-arm systems.



### Technical Discussion: TOE-IN AND CAMBER

'Toe-in' means the front edges of the two rear or front tires are angled inward toward each other, with 'toe out' being the inverse. While severe amounts of incorrect toe and/or camber will result in unwanted tire wear, a small amount of toe change in the rear can make the car turn-in more predictable. 'Camber' is the amount of tilt the tire has top to bottom. Negative camber, with the tire tops angled inward relative to the bottom, will increase the cornering ability.

## Rear Camber/Toe Adjustment Kit

### NMS5203

2002 - 2005 MC / MCS

Adjustable rear camber and toe gives you the flexibility to fine tune your suspension. This unit will reduce negative camber resulting from lowering your MINI, and also allows toe adjustment to improve your turn-in response. Kit includes four replacement bushings and an extraction tool.

All four bushings on the rear lower control arms are replaced with the K-MAC units. The bolt in the K-MAC bushing is offset allowing variation in the 'effective length' of the control arms. By varying the length of the lower control arm, you can affect both the camber and toe.

The extraction tool and washer are used to remove the stock bushings. Use the aluminum block to maintain the gap within the control arm while you use the tool.



## Front Camber/Caster Plates

NMS5201 for use w/Coilovers

NMS5202 for Stock suspension

2002 - 2005 MC / MCS

Adjustable front camber and caster plates allow you to fine tune your suspension. This unit replaces the factory upper strut tops and allows accurate adjustment on an alignment turntable under load from the engine compartment - no need to jack up the vehicle!

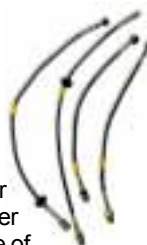


**Brembo Brake Conversion****NMB2035/BLK** *Black calipers***NMB2035/RED** *Red calipers***NMB2035/SIL** *Silver calipers***2002 - 2005 MC / MCS**

The Brembo Gran Turismo Big Brake System for the MINI is designed to improve brake performance with increased stopping power, drastically reduced brake fade, with less weight than factory setup. The system consists of a two-piece 320 x 28mm vented and cross-drilled racing rotor with a 4 piston high performance caliper. The 2-piece rotor system employs an aluminum hat creating a "floating disc" which reduces heat related stress and improves brake performance and pedal feel. The kit includes all hardware to convert the front brakes; available in black, red, or silver calipers. Bedding-in procedure must be followed for proper brake performance. Minimum 17 inch aftermarket wheels with adequate caliper clearance required.

**Brembo Big Brake Replacement Pads****NMB2036** *Front*

Replacement pads for the Brembo Gran Turismo Big Brake System for the MINI (NMB2035).

**Braided Steel Brake Line Kit****NMB1003** *2002 - 4/03***NMB1007** *5/03 - 2005***MC / MCS**

These DOT approved brake lines have a PTFE inner liner surrounded by braided stainless steel. Stock rubber hoses expand under hard use and thus prevent some of the fluid pressure from reaching the pads; these braided lines transfer ALL the pressure to the calipers. Direct replacement for MINI Cooper and Cooper 'S' with no adapters needed. Fits OE calipers.

**AP Racing Brakes****NMB2030****2002 - 2005 MC / MCS**

AP Racing have developed a "Formula" Big Brake Conversion Kit to fit the new BMW MINI. The CP7611-1000 MINI front brake kit uses 304 mm x 24 mm 40-vane discs with drilled faces and 4 piston alloy road spec calipers. The 4 piston opposed bore calipers feature dirt seals, pad, anti-rattle clip and an anti-corrosion finish to make them suitable for the day to day rigors of road use.

The Brake conversion will require 17" aftermarket rims to provide clearance for the wider brake set up. AP Racing can provide templates to enable aftermarket wheels to be checked for fitment. Standard 17" wheels can be used along with a spacer kit.

Kit contains:

- 4 Piston road spec. calipers
- 40 vane ventilated/drilled discs
- Fast road/track pads
- Steel braided hose
- Dot 5.1 brake fluid
- All hardware required to install kit

**Stoptech Big Brake Conversion****NMB2020/RED** *Red calipers***NMB2020/BLK** *Black calipers***NMB2010** *Anodized calipers***2002 - 2005 MC / MCS**

This large 4 piston system provides some REAL brakes for real performance! Front Big Brake kit includes rotors, calipers, brake lines and brake pads. 12.9" slotted rotors with four piston calipers, stainless steel brake lines, and high performance brake pads. Requires 17 inch wheels.

Replacement pads: **NMB2016**

**WHEELS  
TO FIT BIG BRAKE KITS**

see [Page 22](#)

**Wilwood Big Brake Kit****NMB2041****2002 - 2005 MC / MCS**

A Big Brake Kit to fit stock OE 16" and 17" wheels (some may require spacers). Designed for the track, this brake kit greatly increases stopping power while reducing fade. Kit includes:

Forged Billet DynaPro 4 Piston Calipers - Stress flow forging re-aligns the metal's grain structure eliminating the stresses and interruptions to the internal grain structure. FEA generated radial transition design substantially increases resistance to deflection and caliper separation.

7816 "Q" compound Polymatrix Racing Pads - Operates at the lowest noise and dust level of any performance pad. Polymatrix offers high resistance to fade, long wear, and low rotor abrasion.

GT Series Rotor Mounting Hats - Lightweight and strong, these hats are specially designed for use on OE hubs without modifications or interference to the suspension or ABS components. Black anodized finish prevents corrosion and enhances appearance.

SRP Series 12.19" Vented Iron Rotors - Adds stopping power and cooling capacity over smaller diameter OE rotors. Premium grade, long grain carbon iron provides long wear with high thermal stability and resistance to distortion. Venting and cleaning action of the holes and slots reduce pad glaze, dissipate surface heat, and minimize irregular pad build-up on rotor faces. This results in smoother engagement with improved consistency and response at the pedal. Treated with silver zinc wash, these rotors resist corrosion.

Caliper Brackets and Hardware - Aluminum mount brackets with steel threaded bolt inserts are lightweight and strong. Each bracket is CNC machined for precise fit. Grade 8 or higher and AN style nuts, bolts studs, washers, and alignment shims are included in all applicable kits.

Note: Installation of Wilwood Disc Brakes may affect the wheel offset. Fittings and flexlines are required and must be ordered separately (NMB2043).

**Wilwood Brake Hose Kit****NMB2043**

Required for installation of NMB2041.



## Stoptech Slotted Rotors

**NMB2015** *Rear*

2002 - 2005 MC / MCS

High quality rear slotted rotors from Stoptech for the discriminating enthusiast. A direct replacement for the factory rear rotors - a nice match to go with the Stoptech Big Brake Kits NMB2020 and NMB2010. Use the Ferodo DS2500 pads (NMB1201) with these rotors to complement the front Big Brake Kit.



### Convenient Brake Kits!

**NMK3001** *Front*

**NMK3002** *Rear*

Special combo package includes performance rotors (NMB2002 front, NMB2003 rear) and Greenstuff brake pads (NMB1100 and NMB1101).

## Greenstuff Brake Pads

**NMB1100** *Front*

**NMB1101** *Rear*

2002 - 2005 MC / MCS

Reduce brake dust on your front wheels! EBC Greenstuff Front Brake Pads deliver increased stopping power and reduced brake fade while reducing wheel dust by up to 80% over many aftermarket semi-metallic offerings. The new Greenstuff material reduces pad to disc operating temperature by up to 200 degrees while offering high initial 'bite', and are effective up to 800 degrees F. Features factory style spring clips for accurate and quiet operation.

Suitable for all fast road applications; the high percentage of Kevlar fibres deliver excellent braking efficiency and durability. This high performance roadsport material is safe and effective for road braking in intermittent traffic conditions, while delivering in-depth braking power when called upon.

- Upgrades brake performance by 30-50%
- Excellent initial bite resulting in instant response
- Class-leading fade resistance on the road; heat stable to 500°C
- Extremely low disc abrasion due to high Kevlar content
- Low dust formula with zero carbon content, great for alloys
- Low vibration, smooth operation



## Ferodo High Perf Brake Pads

**NMB1200** *Front*

**NMB1201** *Rear*

2002 - 2005 MC / MCS

These pads use the DS2500 compound; their excellent speed and temperature sensitivity characteristics make them outstanding for high performance applications.

- 20% less pad wear than competitors
- Minimal bedding-in, supplied ready to use
- Disc friendly
- High friction level at high and low temps
- 35% less compressibility (pedal feel)
- Less noise for increased driving comfort



## Ferodo Racing Brake Pads - RACE ONLY

**NMB1210** *Front*

## Brembo Cross-Drilled Rotors

**NMB2004** *Front*

**NMB2005** *Rear*

2002 - 2005 MC / MCS

The Brembo Cross Drilled rotors are direct replacements for factory rotors. These rotors offer increased brake "bite", and a continuous refreshing of the brake pad surface. Drilled discs have the additional advantage of being lighter and running cooler.



Brembo Sport drilled brake rotors are for drivers who want to improve the looks and performance of their vehicle's original braking system without having to change additional brake components. Brembo Sport drilled brake rotors provide excellent stopping power in everyday traffic, as well as more spirited, high performance street and highway driving.

Brembo Sport drilled brake rotors match the vehicle's original equipment rotor dimensions and are fully compatible with its hubs, brake calipers and road wheels. Front and rear Brembo Sport drilled brake rotors are available to provide a matched appearance on all four corners of the vehicle, and employ one-piece vented or solid rotors depending on the vehicle's original equipment specifications.

Brembo Sport drilled brake rotors undergo the race-born practice of cross drilling to provide multiple paths to disperse built-up heat and gasses. The cross-drilled holes are bi-angle chamfered at the rotor's outer surfaces to help reduce the cracking caused by repeated high stress, high temperature brake applications.

Brembo Sport drilled brake rotors are coated for corrosion resistance to help eliminate rust and to offer a bold, aggressive appearance to enhance the look of the vehicle's road wheels.

## Drilled & Slotted Rotors

**NMB2002** *Front*

**NMB2003** *Rear*

2002 - 2005 MC / MCS

Much has been written about the benefits of cross drilled and slotted rotors but the bottom line is that they will improve the brake cooling and keep the pad clean for much more efficient braking. This upgrade features front rotors that are slotted and cross drilled for high performance driving. Direct replacement for OEM rotors and can be used with stock or upgraded pads. Rotors sold in pairs.



## Drilled/Slotted Race Rotors

**NMB1020** *Front*

**NMB1021** *Rear*

2002 - 2005 MC / MCS

High performance brake rotors are the most effective way to improve your MINI's braking performance and appearance while maintaining the stock brake setup.

The rotor is the most important part of this setup and as such determines the ultimate capability of your brake system. Heat, friction, thermal cycling - these are just some of the conditions that rotors are exposed to every time you hit the brakes and are only amplified by aggressive driving. These rotors can take this abuse and more - all while looking great inside your custom wheels.

Designed from the ground up, these rotors are not just modified blanks like most of the competition. With special tooling, spec'd metallurgy and closely monitored production - down to the precise grinding of the friction surfaces - and 100% dynamic balance check, this attention to detail assures you a quality part you can count on.



## WHEELS FOR BIG BRAKE KITS

Finding wheels to accommodate the larger calipers of Big Brake kits can be a challenge. The following selection of wheels are either confirmed or reported to fit our brake packages. Please note that wheel styles, specifications, and prices are subject to change without notice. For our most up-to-date offerings, visit **new.minimania.com** and search our product listings for "WHEEL".



### BBS RV-F

**NMW3051**

17 x 7.5, ET42, 16.0 lbs.

CONFIRMED FIT

Also available in Metallic Black



### ASA CL20

**NMW3080**

17 x 7, ET38

Reported to fit



### SPORT EDITION FOX 5

**NMW2012**

17 x 7.5, ET40, 23.0 lbs.

CONFIRMED FIT



### ASA EM9

**NMW3081**

17 x 7, ET40, 21.0 lbs.

Reported to fit



### SSR GT7

**NMW3087**

17 x 7.5, ET42, 16.6 lbs.

CONFIRMED FIT

Also available in Gold and Grey



### ASA JH3

**NMW3082**

17 x 7.5, ET42, 24.3 lbs.

Reported to fit

Also available in Chrome, at 25.1 lbs.



### RONAL RT

**NMW3086**

17 x 7.5, ET40, 23.0 lbs.

CONFIRMED FIT



### ASA JS6

**NMW3083**

17 x 7, ET40, 22.5 lbs.

Reported to fit



### BBS RD

**NMW3085**

17 x 7, ET38, 20.3 lbs.

Reported to fit



### ASA KA3

**NMW3084**

17 x 7.5, ET42, 22.0 lbs.

Reported to fit

### CALIPER CLEARANCE TEMPLATE

Check any wheel for compatibility with our Big Brake kits offered on Page 20. Download the template and instructions from our website, 24/7!

**new.minimania.com**



### Other Possibilities

We have seen Big Brakes under the following wheels, but have been unable to confirm whether a spacer was used or not:

Alpinstar 18s

Gram Lights 57S, 17 x 7.5

Kahn RS-S, 18 x 7.5, ET45

Team Dynamics Pro Race 1

TSW Revos

Volk CE28N

Volk LE37T

Volk GT7

## Wheel Locks

NMW1001 *Silver*

NMW1006 *Black*

Protect valuable wheels and tires from theft. These wheel locks are for OEM wheel setup. Computer designed key pattern for maximum security. Triple-nickel chrome plating for beauty and durability. Written guarantee from McGard and easy key replacements.



## Supercharger Boost Gauge

NMA3062

Ever wonder what your supercharger is doing for your MINI? Here is a simple but effective way to check the health of your supercharger. This 0 - 20 PSI boost gauge mounts under the switch console and gives you a quick reading of your boost pressure. Stock Cooper S should read about 10 - 10.5, and a 15% reduction pulley should read about 14 - 15 lbs.



## "ePod" Gauge Housing

NMA3061

The MINI "ePod" is a revolutionary universal gauge pod capable of housing both 52mm and 60mm gauges. The "ePod" easily mounts to the tach on the steering column and features full rotational positioning for custom viewing angles. Gauges are not included.



## Auxiliary Gauges

NMI7620

From MINI, this Auxiliary Gauge package includes oil temperature and battery voltage gauges. Designed to compliment the dash, the panel mounts in the space under the switch panel.



## ULTRIK Mobility Kit

NMA4015

The run-flat tires on your car are very heavy, not always repairable and extremely expensive to replace. If you want to switch to better conventional tires but are afraid of getting stranded with a flat, here's the answer. The Mobility Kit contains a 12v compressor and tire sealant. Simply fill the tire with sealant, re-inflate with the compressor and motor to the nearest location that can repair the tire. This type of kit is standard equipment on some BMW models. Fits out of sight in the rear fender well storage compartments.



## Wheel Spacers

NMW4011 *15 mm*

NMW4012 *20 mm*

NMW4013 *25 mm*

When all-out cornering performance is your objective then the rule of physics applies – WIDER is better. Wheel spacers from Mini Mania let you balance the handling and performance of your car to suit your aggressive driving style without spending the time, money and trouble for bigger wheels and tires. Our light-alloy spacers extend your stock or aftermarket wheels out to fill the wheelwells properly resulting in better cornering, better aerodynamics and even better looks. Lug bolts sold separately. Spacers sold in pairs.



## Lug Bolts:

M1215KE427 *42 mm*

M1215KE457 *45 mm*

## Wheel Studs and Nuts

NMW1010 *Studs, each*

NMW1011 *Nuts, each*

Eliminate the need to align bolt holes on the wheel with the holes in the hub by replacing the bolt system with these studs and nuts. 12 x 1.5 x 75mm, with 55mm extending from the hub. 12 x 1.5mm, 60 degree taper, 19mm head, and 30mm of thread inside nut. Four studs and four nuts required per wheel.



## Tire Stem Logo Caps

MSA1123 *Cooper*

MSA1123/WREATH *Cooper Wreath*

MSA1123/MINI *UJ Mini*

MSA1123/USA *USA Flag*

Dress up even the smallest part of your MINI! Four designs shown above; four caps in each set.







## ZEEMAX Conversion Kit

NMX2032

MC / MCS

The ZEEMAX CSR body conversion kit is a unique and original kit manufactured in reinforced composite to the highest standard. The kit is not only stunning, but is aerodynamically functional. The conversion allows for the fitment of 17, 18, or 19 inch wheels. The kit consists of front bumper spoiler, rear bumper, two side sills, four wheel arches (six pieces) complete with fitting brackets. Roof spoiler and front splitter are optional. Special order item; oversized freight charges apply. Fits both Cooper and Cooper S; professional installation recommended.



## CarZone Body Kit

NMX2033

MC / MCS

Here is a quality body kit to give your MINI an aggressive look. This fiberglass kit includes front and rear bumper caps, side sills, and fender flares to complete the look. Professional installation recommended. Special order item. Fits both Cooper and Cooper S.



## Front Spoiler

NMA4900 Cooper

NMA4901 Cooper S

Add some style to your Cooper's front end with this unique front spoiler from Hamann. Replaces the front lip with a more aggressive design. Quality German craftsmanship ensures an accurate fit.



## Aero Kit

NMX2001

MC

OEM Aero Kit for standard MINI Cooper without PDC (Parking Distance Control). Kit includes front airdam, rear valance, side skirts, front grills, and mounting hardware.



## Ociari Body Kit

NMX2034

MCS

This ABS plastic kit gives your Cooper 'S' a stylish look. Includes front and rear bumper caps, and side sills to complete the look. Professional installation recommended. Special-order item; oversized freight charges apply.



## Rally Lamp Valance

NMX1070

MC / MCS

Ideal just for its great looks or for the serious driver that really wants to see where he is going. The panel is a direct replacement for the stock unit, requires painting and does not include the lights.



## Roof Spoiler

NMA4903

MC / MCS

Designed for aerodynamic efficiency, this classy Hamann Roof Spoiler adds a little 'sportiness' to your Cooper or S.



## Rear Diffuser

NMA4904

MCS

Hamann of Germany has produced aero aids for many years, and this Rear Diffuser gives the rear of your 'S' a sportier look. Depending on wheels & tires on the car, modifications may be necessary for proper fit. Professional Installation is recommended.



## Bumper Kit

NMX2053

MC / MCS

Add a little flair to your MINI with this unique high quality front and rear bumper kit. The kit replaces both front and rear bumpers using existing mounting points. The rear bumper/valance comes ready to trim for any exhaust system on your car, single or dual tips. All pieces are primed ready for paint.



## Union Jack Mirror Covers

**NMA1210**

**ITEM CARRIES CORE CHARGE**

Add that touch of "something extra" to your MINI. Hand painted design – not vinyl – ensures long-lasting good looks. These mirror covers are direct replacements for stock to guarantee a perfect fit. This item requires a \$120 core charge, which will be refunded when you return your original mirror covers to us.



## Mirror Caps

**NMA1250 Union Jack**

**NMA1251 Carbon Fibre look**

The side view mirrors on the doors of the MINI work great and this is primarily due to their large size. As big as they are they also offer an opportunity to make a statement! These simple to install mirror covers are held in place with double backed tape; they fit perfectly, protect the stock mirror, and look fantastic! Lower cost, easier to install option for NMA1210. For left-hand drive (US) cars only.



## ULTRIK Miniature Antenna

**NMA7500**

ULTRIK brings performance and vastly improved appearance for your MINI with their compact performance antenna. It's a very simple but stylish addition to your MINI that will enhance the look and maintain reception quality. Only 4 inches tall, designed to taper perfectly with the base, the sturdy compact antenna simply screws into your existing antenna mount. Fits 02-05 models.



## Antenna Windsplit

**NMA1263 Carbon Fibre look**

**NMA1264 Black**

**NMA1265 White**

**NMA1266 Chrome**

Streamline your antenna base with this "Shark Fin" base cover! Gives your antenna a more aerodynamic look. Installs in minutes with no tools required.



## Fuel Cap Conversion

**NMX1050**

Upgrade your Cooper gas cap to the stylish S gas cap. The chrome cap flips up to allow access to the stock gas cap. Direct replacement with no drilling necessary. Fuel collar comes primed grey ready to paint black or color matched to the body.



## Sunroof Wind Deflector

**NMX1100**

If you're tired of the wind noise when your sunroof is open, here is your solution. This wind deflector is designed to smooth air flow over an open sunroof to minimize wind noise. No tools necessary for installation!



## Solid Aluminum Fuel Lid Door

**NMX1055**

The ultra high quality of this Italian designed and manufactured piece will absolutely benefit the high BMW/MINI look and feel that we have grown to expect. While you are sure to find less expensive alternatives, the quality and looks of this piece will charm even the skeptics. Very highly polished look retains the stock internal factory locking system while providing a very exotic look!



## Carbon Fibre Exterior Trim

**NMA1051 Bonnet scoop**

**NMA1052 Mirror covers**

**NMA1058 Door handle cups**

Carbon Fiber has long been recognized as the strongest yet lightest material available for use in race cars; tests prove it is also the best-looking! Now you can add a touch of the ultimate technology to your MINI!



NMA1051



NMA1052



NMA1058

## Chrome Fuel Filler Cover

**NMX1057**

Here is a sharp-looking chromed plastic fuel filler door to dress up your MINI. Designed after racing fuel caps with a multi-piece look, this cover also has a subtle 'flame' design in the center.



## Chrome Fuel Cap Ring

**NMA1065**

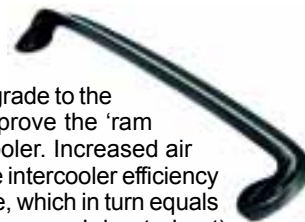
The Cooper 'S' has a chrome recessed gas cap. The outer edge of this recessed area can now look sharp with the addition of our easy to install chrome ring!



## Venturi Hood Scoop

**NMA1310**

This Venturi Scoop is a functional upgrade to the factory hood scoop, designed to improve the 'ram effect' forcing more air to the intercooler. Increased air flow into the hood scoop improves the intercooler efficiency thereby lowering the inlet temperature, which in turn equals more horsepower (or less 'lost horsepower' due to heat). Carbon fibre look; easy installation with no tools necessary.





## 'Projected' Tail Lamps

**NMA3033**

The tail lights on the new MINI were made large enough to be seen at quite a distance but the red lens breaks the color symmetry when viewed from the side or back. These complete lamp conversion kits allow you to replace both lamp assemblies while still retaining the required red lights for stopping, tail and turn signals.



## PIAA Driving Lights

**NMA3022**

This special kit from PIAA replicates the factory kit in intent but provides higher quality at a lower price. Kit includes a pair of 540 Xtreme white driving lights, two mounting brackets, wiring harness, relay, switch and mounting hardware. The lights are 5" diameter, with removable stone guards.



## Louvered Tail Lamps

**NMA3036**

Although the New MINI will never be considered common, most of us still want to be sure that our special car continues to be special! Our European style tail lights are easy to install, have all the legal colors, and add a distinctive look. Fits 2002 through 2005 models.



## Factory Rally Lights

**NMA3030**

Genuine factory rally lights, complete with 2 driving lights and all mounting hardware, wiring and switch to upgrade your MINI to the rally look.



## Smoke Tail Lamps

**NMA3028**

If you like style, these tail lights are for you. The clear lens is replaced with a special smoked lens to give these lights the 'black out' look. This rear light assembly is a bolt-on replacement to the factory units. Sold as a pair.



## PIAA Xtreme White Bulbs

**NMA3023**

The very popular Xtreme White Plus technology is now available in H7 style bulbs for your MINI. Rated at 4000K and delivering 110 watts worth of light from only 55 watts, these bulbs provide a brilliant cool white light that will light up road hazards and street signs much more effectively than normal halogen bulbs. The bulbs are sold in pairs; 2 pair (4 bulbs) are needed to update both high and low beams. For Cooper and Cooper 'S' without Xenon lights.



## Clear Tail Lamps

**NMA3034**

Make yourself perfectly clear with this tail lamp set from MINI. Includes clear third brake lamp; red reflectors will be needed to comply with DOT regulations.



## Clear 3rd Brake Lamp

**NMA3035**

All new cars must have a third brake light which glows red when brakes are activated – but that doesn't mean you can't have a white lens with red bulbs! The MINI 3rd brake light is roof mounted above the rear window. Easy to do and looks great.



## 'Jewel' Side Marker Lamps

**NMA3038**

**MC**

Replace your orange side marker lamp lenses with these **clear** lenses to provide a crystal/jeweled look! Mandatory color is provided by the orange bulbs, included. Sold per pair. Cooper only.



## Driving Light 'Bras'

**NMA7016**

**NMA7016C** *Carbon look*

Keep your factory driving lights looking good for miles and miles. These durable cotton-lined vinyl covers look good and fit great. Sold as a pair.



## White Side Repeater Lens

**NMA3031**

**NMA3039** *Replacement bulbs, ea.*

The stock turn signal side repeater lamps in the MINI Cooper are orange colored, which can present a strange contrast to the color of your car. These special lamps have an **opaque** white lens but still retain the obligatory orange lamp inside. Easy to install! Sold per pair. Cooper and Cooper 'S'; 2002 - 2005 models.



## Driving Light Caps

**NMA1260** *Carbon Fibre look*

**NMA1261** *Chrome look*

Most of us drive our MINI more in daylight than at night and thus are not using our regular headlights, let alone our factory driving lights. The best way to protect them while adding a real high tech look to your MINI is to use these snap-on covers. Easy to store when not in use and ultra lightweight!





## Flag Roof Decals

**NMX4024 UK Flag**

**NMX4009 US Flag**

The ultimate roof decal is one that simply shouts 'heritage'. Our British and American flag decals are designed to cover the entire roof. A must for all enthusiasts; white roof required.



## Checkered Roof

**NMX4020B Black**

**NMX4020W White**

**NMX4020BL Blue**

**NMX4020R Red**

Classic "English Taxi" style. Lets your roof color show through.



## Superman Graphic

**NMX4070**

Dress up your hood with this very appropriate Superman logo. Perfect for the Cooper S, and a great addition for the Cooper. Make your MINI a Super MINI with this quality graphic.



## Bonnet Stripes

**NMX4050 White, long**

**NMX4060 White, short**

**NMX4051 Black, long**

Carry on the racing heritage of the MINI with a set of classic bonnet stripes. Long stripes are made to be placed as shown; short stripes are placed more toward the center of the bonnet – in traditional Mini Cooper style!



## John Cooper Signature

**NMX4061 Black**

**NMX4065 White**

Put the tuning master's signature on your MINI bonnet stripes! Computer precision cut vinyl decals. Strong adhesive – application is very easy. Size 6" x 2.75". Comes in black or white; priced per pair.



## Windscreen Graphics

**NMX4062 Cooper 'S'**

**NMX4063 Cooper**

These great looking graphics fit across the top of the front windshield. Easy to apply; choose from Cooper or Cooper 'S'.



## Mini Mania Windscreen Logo

**NMX4064**

Here is a windshield graphic that looks great on the MINI. Let the world know that your MINI is powered by Mini Mania! This two piece graphics comes with the blue background and metallic silver lettering for a nice contrast - on any colored MINI.



## Stormshield Car Covers

**NMA1001 Grey**

**NMA1001BL Blue**

**NMA1001R Red**

'Stormshield' is the ultimate all weather fabric, and the only fabric we recommend for snow or icy conditions. This ultra-light high tech fabric is also a great cover for lighter weather. This custom fit cover looks good and stores easily when it's not protecting your new MINI.



## Cotton Covers

**NMA1002 Black**

**NMA1002BL Blue**

**NMA1002R Red**

**NMA1002GR Grey**

Our soft brushed cotton custom fit car cover will keep your MINI clean and protected; great for cars stored indoors, or outdoors in mild climate areas.

## Coverbond4 Cover

**NMA1004**

Coverbond4 is a four layer breathable and water resistant material, providing superior protection from minor nicks, dings and scratches. Grey color.

## Tyvek Cover

**NMA1003**

White Tyvek custom fit covers offer good protection with a lightweight, tough, and very water resistant material. Protects your paint and keeps interior cool.

## Cab Cover

**NMA1040**

A great compromise between convenience and necessity! Our Cab Cover is a breeze to put on, and keeps your MINI's roof and windows clean and the interior cool. Made of grey Coverbond4.



## Car Cover Bag

**NMA1006**

This great duffle bag will store your car cover or your motoring gear for your next road trip.



## Car Cover Storage

**NMA1007**

This economical storage bag is perfect for storing your car cover when not in use. Made of a tough grey Coverbond material with drawstring.



## Coverlock Kit

**NMA1005**

Keep your car cover secure with this lock and cable kit. Easily fits through the grommets built into the sides of your car cover. Includes lock with 2 keys.



**Flame Headlamp Rings****NMA1234**

Add a bit of flair to your headlights! Your MINI is sure to stand out with these distinctive 'flame' headlamp covers. Chromed plastic.

**Chrome Side Repeater Vent w/Lens****NMA3032**

Chrome Side Vent Grilles complete with clear side repeater lenses and orange bulbs. Transform the look of your MINI with this stylish kit.

**Rear Lamp Trim****NMA1236**

While there are lots of options for personalizing the rear of your MINI, this is a touch not often seen. Add a bit of chrome regardless of the lens/light you have chosen! Look good as you leave them in your dust! Chromed plastic.

**Side Repeater Vents****NMA1238** *Flame style***NMA1239** *Mesh style*

The side lamp trim on the front fenders of the MINI are a very big part of the looks of your car. These chromed plastic side marker vents are a direct replacement for the boring stock ones. Sold in pairs, lens and lamp not included.

**Stainless Rear Grilles****NMA1101**

The rear of all 'S' models of the MINI have two black mesh grilles below the rear bumper. These stainless steel mesh grilles are easy to install replacements, and they will add a distinctive look to your MINI.

**Stainless Mesh Air Intake Grilles****NMA1067**

All models of the MINI have dull looking black plastic air vents just below the windshield. Our stainless mesh grilles are a direct replacement that snap into place. The stainless material will not rust and looks like chrome!

**Rear Bumper Protector****NMA1103**

The rear bumper on the MINI is actually very hidden. But if you want to protect that expensive assembly and add a high quality look to the rear, this bumper protector is the answer!

**Hood Air Intake Vents****NMA1221**

If you like the snap that chrome adds to the look of your MINI, you'll want to add this item! These chrome plastic grilles are a direct replacement for the stock units, and look great with any color MINI.

**Stainless Pollen Bezels****NMA1000**

Stainless bezels for the intake vents below the windscreen, simply install with a small amount of silicone. Priced per pair.

**Chrome Boot Trim****NMA1102**

The rear hatch on the MINI lifts up quite high for easy access. But this same feature also makes the edge prone to nicks and scratches. A good way to protect it AND add great looks is to add this simple chrome strip along the bottom edge.

**Chrome Bumper Covers****NMA3103** *Rear bumper***NMA3100** *Complete kit*

OEM chrome bumper. These bright pieces are a dealer option on some models of the MINI Cooper.

**Trunk Lid and License Plate Trim****NMA1232** *License plate surround***NMA1233** *Trunk lid trim*

If you really want to accent the rear of your MINI then you will need to have these chromed plastic trim pieces. Trunk lid and license plate surround are sold separately, but look great together!

**Stainless Front Mesh****NMA1104**

The 'S' model MINI has a rather plain secondary lower grille. If you want to add a real touch of class then this stainless steel version is the best answer. Direct replacement.



## Chrome Bonnet Scoop

**NMA1100**

The front bonnet scoop is one of the more distinctive features of the 'S'. If you don't think it stands out enough, then you are sure to want to replace it with this VERY bright chrome bonnet scoop!



## Stainless Side Trim

**NMA1241**

If you have think you have seen it all, then look again! This four-piece side trim kit looks so good it should have been included by the factory. Pure stainless steel of the highest quality.



## Chrome Trim Kit

**NMA1105**

Chrome has always been considered a step up from plain and the MINI is no exception. The vertical post of the door glass can really benefit from these easy to install chrome accessories.



## Chromed A/B/C Pillar Covers

**NMA1237**

This is the greatest in quality and elegance! If you want to look good from every angle, this is your best option. Six-piece set covers all vertical pillars with chromed plastic – looks like metal. Center of A-pillar section has a matte finish.



## Chrome Door Handle Cups

**NMA1230**

Protect your finish and improve your MINI's appearance with this high quality chrome door handle inserts. Avoid scratching your paint when reaching for the door handle and add a touch of class to your MINI's exterior with this snug fitting Door Cup Insert. Easy to install with no tools necessary. Sold in pairs.



## Antenna Bezel w/Washer Jet Covers

**NMA1240**

It's all in the details! This simple but great looking set of chromed plastic windshield jet covers and antenna bezel is easy to install and worth the very little effort.



## Washer Jet Covers

**NMA1019**

Chromed plastic, pair.



## Chrome Mirror Covers

**NMA1201** *Right-hand drive MINIs*

**NMA1200** *Left-hand drive MINIs*

Add a shiny new accent to the exterior with these classy looking Chrome Mirror Covers. Eye catching addition, yet blends in nicely with your other exterior chrome trim pieces. Quality design ensures an accurate fit. Easy to install with no drilling necessary. Sold as a pair.



## Mirror Trim Rings

**NMA1205**

If you chose not to install our chrome cover for the back of the mirror, perhaps this chrome trim ring for the front of the mirror is more to your liking. Chromed plastic, sold in pairs only.



## Union Jack License Frame

**NMA5000** *Brushed steel*

**NMA5001** *Polished steel*

Brushed or polished 304 stainless steel, with a 10-year guarantee! Four-hole mounting with matching hardware hidens.



## Yakima Sports Racks

**NMA8000** *Basic rack system*

**NMA8007047** *38" wind fairing*

**NMA8002000** *Bicycle tray (each)*

**NMA8002067** *Wheel fork (each)*

**NMA8003063** *Ski/snowboard rack (pair)*

Mini Mania exclusive! We now offer the highest quality sports racks for your new Mini. The Yakima rack system installs easily in minutes – no need to drill holes in your roof. The basic system includes four rack towers, locks and clamps, and two cross bars. Add the optional items listed below to hold your bicycle or skis/snowboard. 75 lb. maximum load.



NMA8000



NMA8002000



NMA8002067



NMA8003063



NMA8007047

## Rear Bike Rack

**NMA8002607**

Our rear mount Yakima bicycle rack installs and removes in minutes. A simple alternative to our roof mount system. Comes complete with all necessary hardware. No tools required.





## Two-Piece Bras

Protect the front end of your New MINI with this full coverage Bra. Made of durable vinyl and lined with soft cotton. Two piece for proper fit and easy installation (requires NO holes or any other modification). Double stitched seams with edging ensure a durable, accurate fit.

Cooper

NMA7010 Black vinyl

NMA7010D Black vinyl, w/factory driving lights

NMA7010N Black vinyl, no license plate opening

NMA7025 Black vinyl, w/factory aero & license plate opening

NMA7010C Carbon-look

NMA7010CN Carbon-look, no license plate opening

Cooper 'S'

NMA7020 Black vinyl

NMA7020D Black vinyl, w/factory driving lights

NMA7020N Black vinyl, no license plate opening

NMA7020A Black vinyl, w/factory aero & license plate opening

NMA7020C Carbon-look

NMA7020CN Carbon-look, no license plate opening

NMA702CND Carbon-look, w/factory driving lights, no license

Cooper Cabrio (non-S)

NMA7030 Black vinyl

NMA7030N Black vinyl, no license plate opening

NMA7030ND Black vinyl, w/factory driving light, no license



## Sport Bras

This Sport Bra protects the leading edge and lower portion of the hood, the area that is most vulnerable to damage. Made of durable vinyl and lined with soft cotton. One piece for easy installation.

NMA7011 Cooper, black vinyl

NMA7011C Cooper, carbon-look

NMA7021 Cooper S, black vinyl

NMA7021C Cooper S, carbon-look

NMA7031 Cabrio Cooper, black vinyl



## MINI Sunshades

### NMA1010

Our custom fit sunshade will keep your interior cooler and help protect your dash from sun damage. Easy to use with sewn-in Velcro for easy storage.



## MINI Logo Sunshade

### NMA1009

This insulated and reflective **UVS-100** sunshade is custom fit for your new Mini (with MINI logo) and folds easily for storage. Storage bag included.



## Waterless Car Duster

### NMA1042

Keep your car clean between washings with this special duster. 14-inch long re-usable duster has specially-treated soft cotton brush which lifts dirt off your car without damaging the finish. Simply shake the brush to clean – no rinsing necessary! Custom storage bag with velcro closure keeps the duster clean and protected.



## Headlamp Covers

NMA3010 *without Washers*

NMA3012 *with Washers*

Protect your expensive headlights and front turn signals with these easily installed covers. The optically clear plastic fits perfectly and stays soft to absorb most impacts from stones and gravel.



## Oil Bag

### NMA4030

For a little 'peace of mind', use this quality oil bag to carry that extra quart of oil in your MINI. Made of heavy duty nylon canvas with a plastic liner to contain any unexpected leaks. Includes 2 pairs of disposable gloves. Oil not included.



## Mirror Bras

NMA7015 *Black*

NMA7015C *Carbon look*

Black vinyl outer and soft cotton inner makes these mirror bras the best choice to protect your mirrors from rocks, road tar, etc. Elastic band outer edges makes for snug fit while the Velcro strap insures the bra will stay put even at high speeds. Fits Cooper and Cooper S.



## Rubber Mats from MINI

**NMI7605/BGE** Front, Beige  
**NMI7605/BLK** Front, Black  
**NMI7605/GRY** Front, Grey  
**NMI7606/BGE** Rear, Beige  
**NMI7606/BLK** Rear, Black  
**NMI7606/GRY** Rear, Grey  
**NMI7607/BGE** Boot extension, Beige  
**NMI7607/BLK** Boot extension, Black  
**NMI7607/GRY** Boot extension, Grey  
**NMI7608/BGE** Boot w/logo, Beige  
**NMI7608/BLK** Boot w/logo, Black  
**NMI7608/GRY** Boot w/logo, Grey



Just like your MINI, these mats provide the perfect combination of style and function. A distinctive circular pattern and MINI logo look great, and the vertical grids funnel and retain moisture to improve footing, especially in foul weather. Sold as a pair. Matching rear mats, boot mat, and boot extensions (covering back of rear seats) are also available.

## Diamond Plate Floor Mats

**NMA1031** Front mats w/dead pedal  
**NMA1031/BOOT** Single boot mat

Go for the Rally Race look with these unique floor mats made of diamond plate aluminum. Industrial strength and easy installation.



## Carpet Mat Sets

**NMI1020** Black  
**NMI1020GR** Grey  
**NMI1020T** Tan

Upgrade your factory floor mats to our premium quality floor mats. High density nylon yarn, nylon velour edging, and pure rubber backing insure your mats will look good as you motor into the future.



## Rubber Floor Mats

**NMI1040B** Black  
**NMI1040G** Grey  
**NMI1040T** Tan

These heavyweight mats will protect your front carpets. The unique ribbed pattern will trap rocks, mud, and moisture. They can be quickly cleaned and returned to service. Trim to fit; set of two.



## Mini Mania Carpet Mats

**NMI1030** Black

Display your mania for the MINI with this quality mat set. High density nylon mats have the Mini Mania logo embroidered in red, nylon velour edging, and rubber backing. Four-piece set.



## ULTRIK Alloy Pedal Set

**NMA2110** Silver  
**NMA2110/BLK** Black  
**NMA2110/RED** Red

Add more style and excitement to the interior of your Mini with our billet aluminum Pedal Set. These oversized pedals are safer to drive, and make it easier to drive with the "heel & toe" driving technique used by most performance drivers. Three-piece set, for cars with manual transmission.



## Dash Covers

For 2002 - 2004:

**NMI1002B** Black  
**NMI1002C** Charcoal  
**NMI1002GR** Grey

With Sensor Provision:

**NMI1001B** Black  
**NMI1001C** Charcoal  
**NMI1001GR** Grey

Deluxe Dash Covers:

**NMI1003** Grey velour  
**NMI1004** Grey carpet

For 2005 with Sensor Provision:

**NMI1005BL** Black  
**NMI1005CH** Charcoal  
**NMI1005GR** Grey

Our custom fit dash covers look great, fit perfectly, and protect your dash from sun damage while eliminating reflective glare. Available in several colors to match your interior. Available with or without provision for dashboard sensors.



## Easy-Pull Seat Straps

**NMI4130**

Tired of reaching into the car to pull the rear seats upright? These ingenious pulls will give your back some relief. Simply remove headrest to install the pull and you're done! When not in use, the straps secure themselves to the back of the seats with hook-and-loop tape.



## Halogen Map Light

**NMI6001**

If you have a navigator or just friend trying to help you find your way at night then this 12 volt halogen light is the right answer. Plugs into the cigarette lighter outlet; its flexible neck allows you to aim the light where you need it and not into the driver's eyes.



## Boot Cargo Net

**NMA7602**

From MINI, this net holds all kinds of cargo securely. S-hooks included for installation.



## Accent Chrome Trim

Chrome trim gives any interior a distinctive touch of class. All of these very easy to install bits will dress up the interior to personalize your MINI. Chromed steel except as noted.

**NMA1018** Rear Cupholder Ring (chromed aluminum)

**NMA1020** Dashboard Vent Rings \*

**NMA1021** Radio Trim Rings \*

**NMA1022** Loudspeaker Rings \*

**NMA1023** Tweeter Loudspeaker Rings \*

**NMA1024** Center Vent Ring \*

**NMA1025** Hazard Warning Ring \*

**NMA1026** Heater Control Knob Ring

**NMA1027** Speedometer Ring \*

**NMA1028** Tachometer Ring \*

**NMA1029** Switch Panel Rings \*

**NMA1030** Gearshift Ring \*

**NMA1043** Center Dash Vent Ring

**NMA1044** Front Ash Tray Trim

**NMA1062** Climate Control Display Ring

**NMA1063** Vent Center Buttons (set of 4)

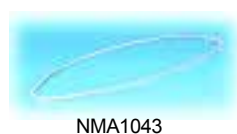
**NMA1064** Turn Signal/Wiper Stem Cap

**NMA1066** Door Lock Pins and Surrounds (pr)

**NMA2014** Door Lock Rings Only (pair) \*

**NMA9000** Console Trim Bars

**NMA9001** Air Bag Trim Ring



## Chrome Trim Kit

### NMK2001

Includes all items marked with \* at left. Accessorize your interior in one convenient step and save!

## TT Design Trim Kit

### NMA1088

This 11 piece set of **TT Design** polished aluminum trim rings result in the most modern look for the MINI interior yet available. Made of highly polished aluminum, the TT set includes a pair of rings for the large door speakers, rings for the speedometer and tach, a ring for the gearshift boot, a pair for the hazard switch and instrument lighting, and a pair for the topside vents on the dash. These TT rings can easily be held in place with a little dab of silicone (available separately). Not for Harmon Kardon upgrade.



## BOLD Chrome Trim Kit

### NMA1089

This 12 piece set of **BOLD** chrome trim rings result in the most pronounced look available for the MINI interior – at an outstanding price! These rings are only available in a set and include rings for all four speakers, speedometer, tach, gearshift boot, and door handles and a set for the cup holder and ash tray. Install with silicone adhesive, available separately.



## Bold Interior Trim Kit w/Sat Navigation

### NMA1090

14-piece set, same as NMA1089 but with additional ring for satellite navigation. Not for Harmon Kardon upgrade.

## Navigation Chrome Trim

### NMA1012 Ring only

### NMA1041 Upper & lower trim only

If you're adding chrome trim to your MINI's interior, don't overlook the satellite navigation system! Photo shows two items, available separately. NMA1012 is the outer Sat/Nav screen ring, NMA1041 consists of two pieces covering the upper and lower portions of the screen.



## Chrome Dash Kit

### NMA9002

If you feel your stock dash needs more pizzazz, this 5-piece dash overlay will definitely set a new standard in brilliance! Although this is imitation chrome, it looks every bit like a factory option. Double back tape installation results in super simple installation and removal. Fits Cooper and Cooper 'S'.





## Mini Mania Shift Knob

**NMA2009**

Upgrade your shift knob to this shiny "Dark Chrome - Titanium look" shift knob with Mini Mania's "MM" logo. Easy to grasp for those quick shifts! Easy DIY installation.



## MOMO Shift Knobs

**NMA2002 Race Air Leather**

**NMA2004 Super Anatomic/Zebrano**

These anatomic shift knobs are hand crafted in Italy and feature the highest quality materials.



NMA2002

NMA2004

## Chrome Shift Knob

**NMA2005**

This 2 inch diameter chromed brass knob is just the right size for smooth shifting. Looks good with any interior!



## Brass/Leather Handbrake Grip

**NMA1036**

Enhance your interior with this high quality chromed solid brass and leather parking brake handle. This replacement handle looks and feels great with a soft leather grip. Professional installation only.



## Alloy Handbrake Grip

**NMA1032**

Factory option. Looks great and easy installation.



## Sill Plates

**NMA1015 "Mini Mania"**

**NMA1016 "Stage 1"**

Dress up the interior and protect this high use area from scuffs and scratches with our laser cut polished stainless sill plates. Sold in pairs.



## Stainless Hatch Strut Covers

**NMA4031**

The rear hatch on all new MINIs is a very clever design and it is great to have total access through the rear of the car. BUT, the struts that hold the hatch open are big and since they stand out anyway, why not simply slip these chrome covers on to really dress it up!



## Dash Kits

**NMI4200 Dark grey carbon fibre**

**NMI4201 Dark burlwood**

**NMI4203 Silver carbon fibre**

**NMI4204 Regal Burlwood**

**NMI4205 Rosewood**

**NMI4206 Mustard Birdseye Maple**

**NMI4207 Light blue carbon fibre**



NMI4200 Dark Grey Carbon Fibre

Add the distinctive look of wood grain or genuine carbon fiber to your new MINI's interior. Transform the entire look of your dash within minutes with these adhesive-backed kits. Kits include the 13 pieces shown below, and are available in a variety of colors.



NMI4204 Regal Burlwood



## Side Panel Kit

**NMI4210 Grey carbon fibre**

**NMI4214 Regal burlwood**

**NMI4216 Mustard birdseye maple**

If your cab has one of our dash kits, go the extra mile and add the matching pieces for your doors. Includes three pieces for each door panel. Available in three styles.



## MODIFIED INTERIOR

to customer's specification, featuring:

**NMA1031 Diamond plate floor mats**

**NMA1089 Bold chrome interior trim kit**

**NMA2110 ULTRIK pedal set**

**NMI4200 Dark grey carbon fibre dash kit**

**Ultimate Leather Armrest****NMI4016** Charcoal grey\* w/black base**NMI4016/BLK** Black w/black base**NMI4017** Charcoal grey\* w/silver base**NMI4017/BLK** Black w/silver base

This comfortable armrest is easy to install and looks great in your New MINI. Attaches easily to the center console while still offering ample access to the handbrake. Retractable Italian leather pad with a small storage compartment beneath. Compartment houses a retractable cup holder, and the entire armrest assembly can be 'flipped up' out of the way when not in use.

\*Charcoal Grey matches factory "Panther Black" interior

**Euro Style Armrest****NMI4030**

Here is a sleek armrest made with quality German craftsmanship. The color, material, the 'curvy' design – everything about this armrest belongs in the MINI! Simply snaps into place using existing mounting points. Black only.

**Padded Armrest****NMI4012**

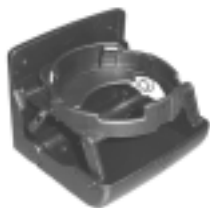
Add comfort to your driving with this simple but elegant padded leather armrest. Made with quality English leather, this armrest sits in the right position to support your elbow without blocking handbrake access. Black only, easy installation.

**Hold the Phone!****NMI4015** Charcoal, black base**NMI4015/BLK** Black, black base

Same style as the NMI4010 armrests shown above, but with a handy non-slip cell phone "well" in the top of the armrest. The phone well is 2" x 5" x 0.75" deep. Leather pad fills the well when not in use.

**Universal Cup Holder****NMI4303**

Created by the Fischer Company, this universal Folding Cup Holder addresses the lack of a large forward cup holder. Easily installed and folds flat when not in use.

**Magnetic Phone Holder****NMI4301**

This magnetic cell phone holder allows easy access to your phone. It uses a magnetic pad that attaches to the back of your phone, while the base is easily mounted to flat or convex surfaces. Can also be used for palmtops and garage door openers.

**Glove Box Organizer****NMI4101** Left-hand drive cars**NMI4101R** Right-hand drive cars

Our unique organizer doubles the usable space in your MINI's glove box with a simple but ingenious design. Five separate compartments up to 10 inches wide organize items of a variety of sizes, including the MINI Owners Manual, and prevent them from falling out when the glove box door is opened. Installation is simple with no tools required.

**Center Console Organizer****NMI4102**

The center console area of all MINIs is elegant indeed but also has a lot of wasted space. Our custom console organizer complements our best-selling glove box organizer (above). Holds everything from cell phones and wallets to your sandwich for lunch.

**Interior Convenience Kit****NMK2000** Black base (as shown)**NMK2002** Silver base

Get the best of all worlds for the interior of your MINI and save money at the same time. Our Convenience Kit includes our best-selling items: Leather armrest with storage compartment, glove box organizer, and center console organizer. Armrest comes in charcoal grey leather with black or silver base.

**Floor Cup Holder****NMI4103**

Here is an innovative new solution to replace the factory cup holders! Designed specifically for the MINI, this cup holder will hold anything from a 12 oz. soda can to a Big Gulp, while allowing placement to suit your preference. Simply slip the base plate of the cup holder under the edge of your floor mat and you're done!

**CD Holder****NMI4302**

Keep your CDs organized and ready for use with this CD Box. Can be easily mounted in several locations. One hand operation. Holds 6 CDs.

**Cell Phone Holder****NMI4104**

This unique, flexible phone holder allows you to keep your communication devices handy. Attaches to any glass surface with a suction cup at one end, and a strong magnet at the other. Simply attach the metallic strips to your phone or 2-way radio and you're all set!





870 Gold Flat Road, Suite A  
Nevada City, Ca. 95959

### Business Hours:

Mon. - Fri., 6 a.m. to 5 p.m. (Pacific)

(530) 470-8300  
(800) 94MANIA  
(800) MANIA01  
(530) 470-8388  
(530) 470-8300  
Info@Minimania.com

**Tech Support/Orders**  
**Orders only please**  
**Toll free FAX line**  
**Local/International FAX**  
**Local/Intn'l Voice**  
**E-mail**

**Catalog NMP1001 ..... \$5.00**

Product offerings, specifications, and prices are subject to change without notice.

**Shipping:** By the least expensive way, usually UPS, unless otherwise specified. All shipping costs are paid by the customer.

**Core Charges:** Some items require you to send your original item back to us. The price for the new item will state an additional core charge; to receive your refund of the charge, return the original item removed from your MINI to us, with a copy of your invoice.

**Returns:** We at Mini Mania value our customer's satisfaction. We understand that sometimes the part you ordered may not always be right, and strive to make the return process as painless as possible. Items returned to us with a Return Authorization number (RMA) within 60 days of purchase will be refunded at the full purchase price, excluding shipping charges. Special order items, books, videos and electrical components may not be returned. For our full Returns policy, please visit our website.

**Payment:** We accept VISA, Mastercard, Discover, check, or money order. Returned checks will be subject to a \$25.00 service charge, plus additional fees if the check is not satisfied within 30 days.

**Warranty:** All Mini Mania parts are warranted against defects in materials and workmanship. Many products carry their manufacturer's warranty. In most cases, warranty will not cover labor, failure of related components, failure from faulty installation or misuse, nor will liability exceed the cost of the original component. Visit the Mini Mania website for detailed terms and limitations.

**800 Numbers:** Our 800 numbers are designed to help you place your orders quickly and easily. Please have your customer number (from your mailing label), part numbers and prices available. For technical support, please call (530) 470-8300.

### Satisfaction Guaranteed:

We back up every sale with our Satisfaction Guarantee: If you're not fully satisfied with our products or service, we'll refund the purchase price. A full refund is available for qualified items returned within 15 days of order receipt. Store credit, minus a nominal re-stocking fee, is available for returns received up to 45 days from order receipt. Electrical Components, VHS Tapes, DVDs, Software or Software Devices, Books and Special Order or Custom Built Items cannot be accepted for return.

## index

Air Intake & Filters .....	14, 15
Armrests .....	34
Body Kits .....	24, 25
Books .....	5
Brakes & Pads .....	20, 21
Bras .....	30
Car Care .....	30
Car Covers .....	27
Chrome Trim, Exterior .....	25, 28
Chrome Trim, Interior .....	32, 33
Clutch .....	12
Cooling .....	15
Cup Holders .....	34
Cylinder Heads .....	10
Dash Kits .....	32, 33
Decals & Graphics .....	27
Driving Lights .....	26
Electrical Upgrades .....	11
Engine Upgrades .....	9, 10
Exhaust Upgrades .....	16
Floor Mats .....	31
Gauges .....	23
Gearbox .....	14
Intercooler .....	9
Interior Convenience .....	31, 34
Interior style .....	32, 33
Lamps .....	26
Limited Slip Diff .....	13
Maintenance Items .....	4
Nitrous Oxide .....	10
Organizers .....	34
Shocks & Coilovers .....	17
Sport Racks .....	29
Stage Kits .....	6 - 8
Sunshades .....	30
Suspension .....	17 - 19
Sway & Strut Bars .....	18, 19
Tools .....	4
Transmission .....	13, 14
Wheels & Accessories .....	22, 23





870 Gold Flat Road, Suite A  
Nevada City, Ca. 95959