



# Trailer Receiver Hitch Installation Instructions

Model/Applications: 1004: R56 07-10 Mini Cooper Hatch  
R57 09-10 Mini Cooper Convertible  
1003: R5 07-10 Mini Cooper S Hatch and 09-10 Mini Cooper S Convert

Hitch Capacity ..... 1400 lbs gross, 200 lb max tongue

Notes: This hitch allows for a removable ball mount to be attached (which is sold separately) and is required if towing a trailer. This hitch is not intended for use as a weight-distributing hitch. Before towing, the hitch pin and retainer clip MUST be in place securing the ball mount to the receiver.

The tools you will need are:

- #2 Phillips Screwdriver
- #2 Stubby Screwdriver
- 8mm Socket
- Torque Wrench
- Safety Goggles
- 12mm or 13mm Socket (MINI changed bolt head size mid-2007)
- 10 mm Socket (Convertible)

## Step 1: Removing the bumper

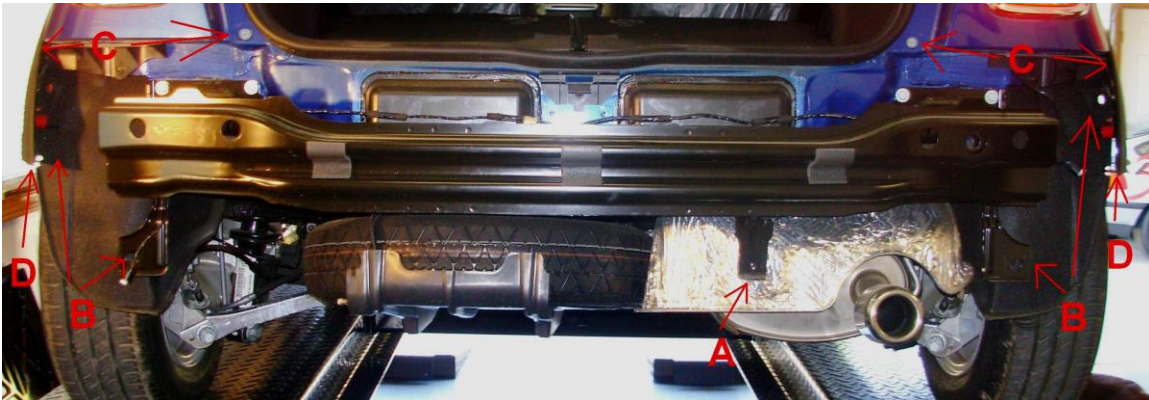
The MINI Cooper and S stock bumper is attached the car with nine fasteners. Seven are very easy to access. In the picture below, the fasteners have been labeled for the types. The fastener count is A=1, B=4, C=4, D=2.



Picture 1 – Fasteners

In the next three pictures, the fastener locations are labeled.

## Trailer Receiver Hitch Installation Instructions



Picture 2 – Rear Bumper off (same locations for Cooper and Cooper S, this is a Cooper)



Picture 3 – Fastener C Under Rear Fender Flair



Picture 4 – Rear Bumper

Using the 8mm socket, remove fastener A.

Next, with the Phillips Screwdriver, remove fasteners B in four locations, two on each side. These

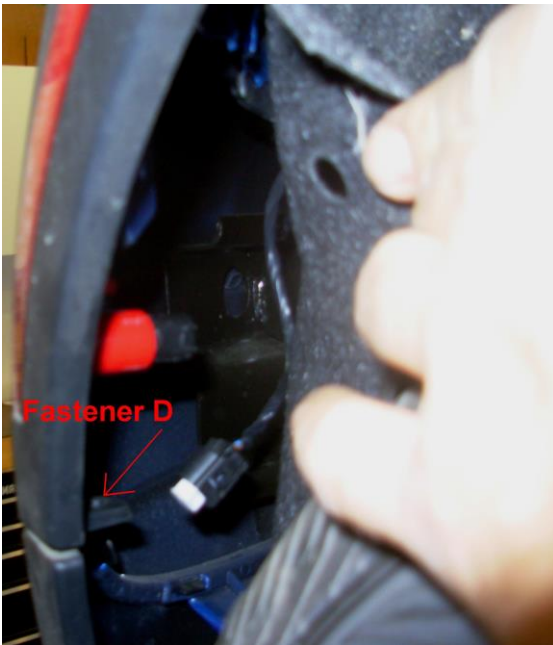
## Trailer Receiver Hitch Installation Instructions

are accessed from inside the rear fender well as shown in Picture 5. Repeat on the other side of the car. Fastener B is a two-piece design. Do not be surprised if one part remains in the fender well. You will need to remove this piece before re-installation.



Picture 5 – Inside Rear Fender Well

Next, you need to remove the two plastic two piece connectors that hold the rear wheel arch to the rear bumper. They are behind the inner fender liner. One is on each side of the car. This is fastener D in picture 2 and 4 above and in the picture 6 below.



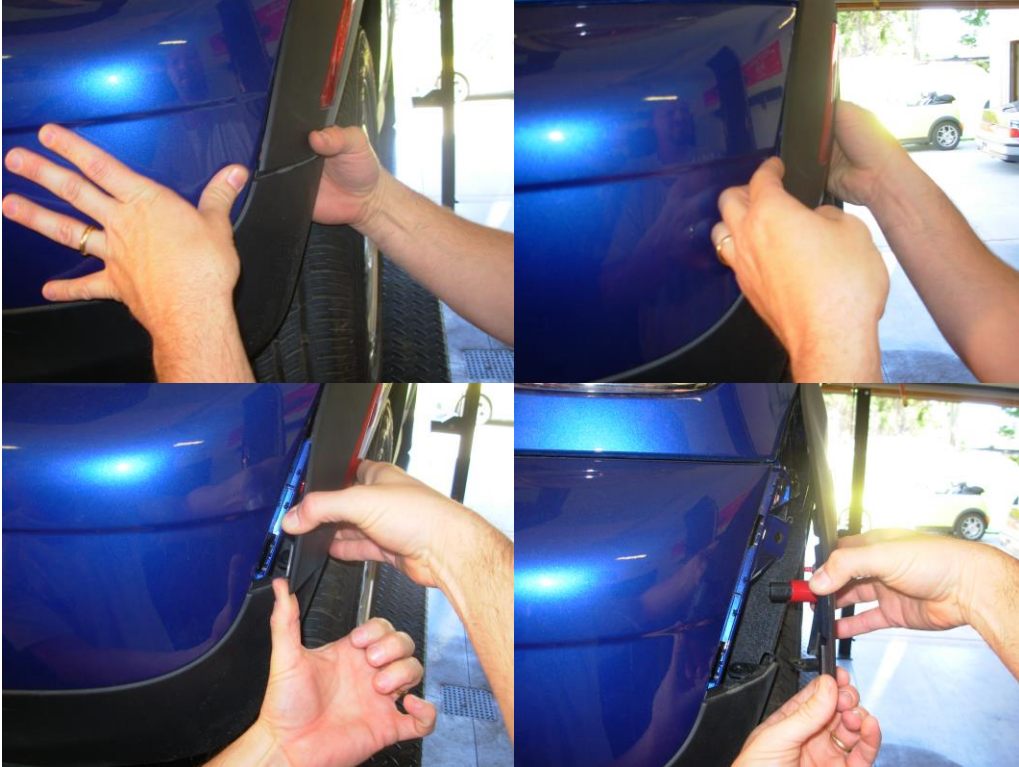
Picture 6 – Behind Rear Fender Well

To remove this fastener, push inner piece down from the top until enough of the head is available from the bottom to pry it the rest of the way out. Remove both pieces.

The next two screws are hidden. The location of two of these screws, one on each side, is under the rear fender flair that is attached to the body, as shown in Picture 3. Using one hand, fish up behind the fender liner at the bottom seam of the wheel arch and rear bumper arch until you can feel the lowest tab. Push on the bumper towards the front of the car while pushing on the inner

## Trailer Receiver Hitch Installation Instructions

tab. This will free the lowest tab. Pull hand out from under fender liner. Use hand now to pry the arch away from the bumper to free the top second clip.



Picture 7 – Accessing hidden screw

Use an angled Phillips screwdriver or a stubby #2 Phillips screwdriver to remove the screw C. Disconnect the side marker light connector.



Repeat for the other side.

The final two screws are the ones you see every time you open your boot on the Hardtop or drop



## Trailer Receiver Hitch Installation Instructions

the back tailgate on a Convertible. Locate the two fasteners C in Picture 2. Remove these two with your Phillips Screwdriver.

If your vehicle is equipped with a rear fog light(s), disconnect the wiring harness from the rear and pop out the light(s) from the back side by depressing the tabs on each side of the light.

Your bumper cover is now basically free from the car. Pulling up and back in the center of the bumper should help pull the bumper off the center mounting ledge. If necessary, you may need to fish your hand up behind the plastic bumper cover and over the steel substructure to reach the final center mounting point. See photo below. This shows the tab you need to reach up and depress behind the plastic bumper cover.



You now need a box or something to place the bumper on. If you have backup sensors this box can help hold the bumper cover in place until the sensor wires are disconnected (use a cloth between the bumper and box to help eliminate any scratches).

Congratulations! Your bumper should be totally free from the car now and you should be ready to install the hitch.

### Step 2: Hitch Installation

General Fit: This hitch mounts behind the steel substructure behind the bumper cover using the original bumper mounting bolts. The steel substructure is reinstalled over top of the hitch.



## Trailer Receiver Hitch Installation Instructions



Remove the eight 12mm or 13mm bolts holding the steel bumper substructure to the car. Some time in mid-2007 the bolt head changed from 12mm to 13mm.

**Hardtop:** Disconnect the wiring harness from the steel substructure. Remove the back foam insert. This foam insert should be trimmed to desired fit during the install of the hitch/bumper.

**Convertible:** Behind the steel substructure is a steel plate. Disconnect the wiring harness from this plate. Using a 10 mm socket, remove the two plastic nuts holding this plate to the back of the steel substructure. Discard this plate and the foam insert.

Lift hitch into position behind the steel substructure sandwiched between the substructure and the rear of the car. Use the eight 12mm or 13mm bolts to install the hitch and steel substructure back to the car. Torque to 17 foot lbs.



**Hardtop:** Reconnect the wiring harness to the steel substructure.

**Convertible:** Use the supplied wire ties to connect secure the wiring harness to the cross bar of the trailer hitch.

If you have a 2007+ Mini Cooper S Hardtop or a 2009+ Mini Cooper S Convertible, the rear valence will either need to be modified or you can purchase a modified rear valence from Mini Do More. See enclosed modification instructions.



## Trailer Receiver Hitch Installation Instructions

The rear valence is removed from the rear plastic bumper cover by depressing the plastic fittings around the outside of the valence with a regular screwdriver and prying apart with your other hand.



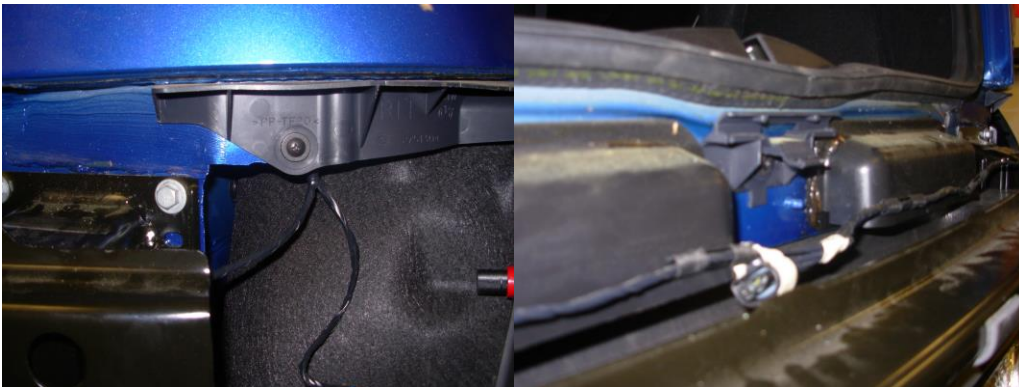
Reinstall by clipping back into the plastic connectors.

### Step 3: Reinstall the rear bumper

This is really just the reverse of the removal directions with these helpful hints.

Attach the backup sensors (if equipped) wiring harness.

When hanging the bumper on the car, there are three major height locators for the bumper. These are shown in Pictures 8 & 9.



Picture 8 – Side Alignment Feature

Picture 9 – Center Alignment Feature

The bumper rests on the center alignment feature and fits between the body and side alignment feature.

Screw in two fastener C screws inside the boot. Only tighten about two-thirds of the way, this will allow some slight adjustment.

Then, tighten fastener C inside the rear body fender flair. When complete, reattach the fender flare to the rear bumper and reinstall two part fastener D.

Maneuver the inner fender wells inside the rear bumper. Assemble Fastener B in four places by



## Trailer Receiver Hitch Installation Instructions

inserting the spreading part of Fastener B first into the inner fender well and bumper. Next, by either pushing or screwing, tighten the other part of the Fastener B.

Finish tightening the two Fastener C's inside the boot.

Tighten Fastener A.

You are now finished with the bumper.

### **Step 4: Use**

Now that your hitch is installed, you are ready to use it. The receiver portion is set in behind the fog light/black plastic cover if you have an 07+ Mini Cooper or behind the black plastic cover in the modified rear valence of a 2007+ Mini Cooper S. Remove the rear cover or fog light in the 2007+ Mini Cooper by depressing the tabs behind the bumper on this light or cover. You will need to reach with two hands under the bumper cover to gain access to these tabs.

With the light or cover removed you can easily see the receiver. Slide your receiver mounting devices (cargo carrier, bike carrier, drawbar, etc.) into the receiver.

### **Step 5: Legal Stuff**

**Thanks for choosing [www.MniDoMore.com](http://www.MniDoMore.com). It was a pleasure doing business with you.**

### **WWW.MNIDOMORE.COM LIMITED LIFETIME WARRANTY**

**Each trailer hitch manufactured by [www.MniDoMore.com](http://www.MniDoMore.com) is warranted to the original purchaser to be free from defects in material and workmanship for as long as original purchaser owns the vehicle on which the trailer hitch was originally installed. Any defective hitch may be returned freight prepaid with dated proof of purchase receipt and will become the property of [www.MniDoMore.com](http://www.MniDoMore.com). Finishes are not warranted. This warranty does not apply to any [www.MniDoMore.com](http://www.MniDoMore.com) hitch damaged as a result of abuse, neglect, improper installation, overloading, or alteration. This warranty is limited to the replacement of the defective hitches only. Installation, removal, incidental or consequential losses or expenses incurred as a result of using a [www.MniDoMore.com](http://www.MniDoMore.com) hitch such as towing, telephone, lodging, rental fees, fuel, transportation, or time lost are not covered.**

**Products sold but not manufactured by [www.MniDoMore.com](http://www.MniDoMore.com) will be subject to the terms and conditions of the original manufacturers warranty and are not warranted for any purpose by [www.MniDoMore.com](http://www.MniDoMore.com).**

**This warranty gives specific legal rights and you may have other rights which vary from state to state. The manufacturer reserves the right to make changes, additions, or improvements to new product without obligation to install same on existing product covered by this warranty.**





## Trailer Receiver Hitch Installation Instructions

**Please be sure to read and follow all assembly and installation instructions.**

**All [www.MniDoMore.com](http://www.MniDoMore.com) Trailer Receiver Hitches have a maximum 200 lb tongue weight rating and a maximum 1400 lb gross weight rating. NEVER exceed recommended loading ratings for Trailer Receiver Hitch or Miniature Trailer.**