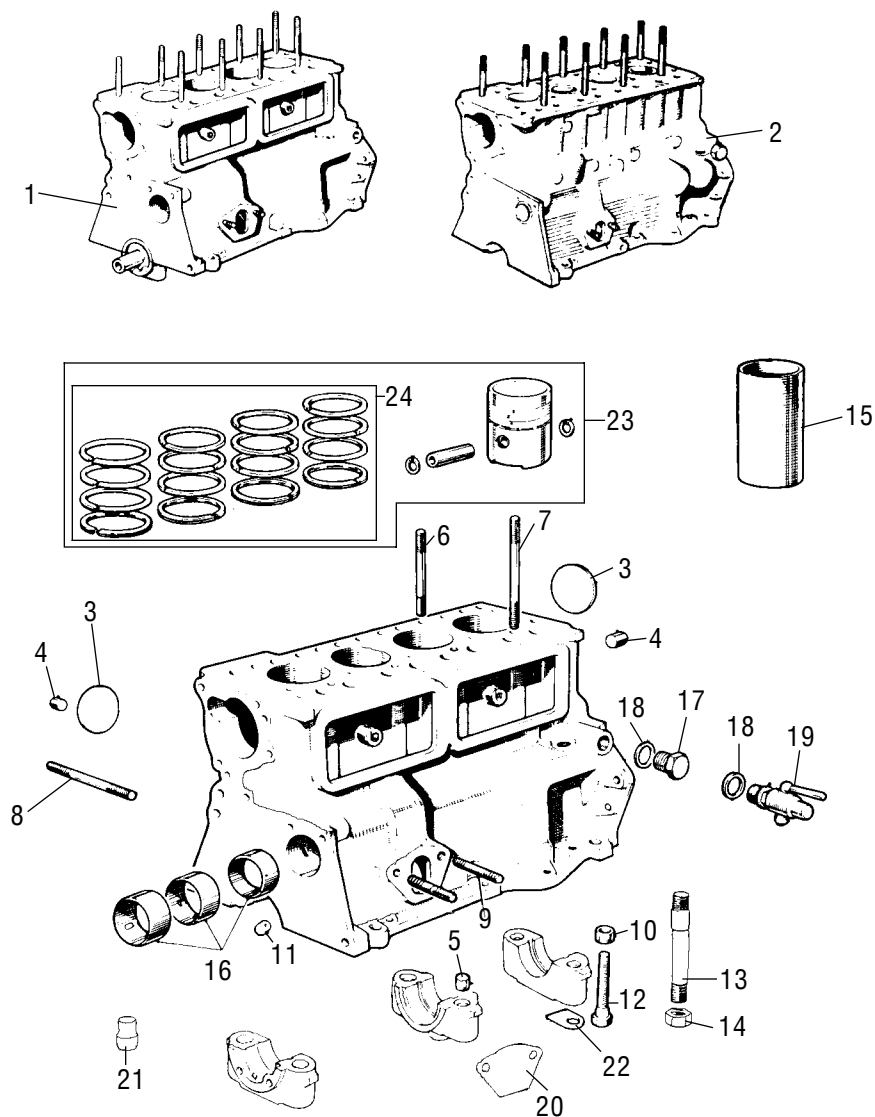


ENGINE

2

BLOCK, PISTONS AND PISTON RINGS	2
BLOCK COMPONENTS	6
CYLINDER HEADS	20
CYLINDER HEAD COMPONENTS	32
OIL PUMPS, PRESSURE RELIEF, DIP STICKS	34
OIL FILTERS AND COMPONENTS	36
TIMING AND TAPPET COVERS	38
GASKET SETS	39
OIL COOLER AND LINES	40
BREATHER AND EMISSION COMPONENTS	42
ENGINE MOUNTS AND BRACKETS	44

BLOCK COMPONENTS AND PISTONS



BLOCK COMPONENTS AND PISTONS

NO.	PART NO.	DESCRIPTION	QTY	REMARKS
1	BHM1439	Block bare 998cc	1	A-Plus
2	BHM1441	Block bare 1300cc (no tappet side plate covers)	1	A-Plus
3	CP8	Core plug (1.625" diameter)	4	850/998/1100, not A-Plus
3	CP7	Core plug (1.326" diameter)	5	1300cc and all A-Plus
3	CP10	Core plug (1.647" diameter)	4	All Cooper 'S'
4	12G3503	Oil gallery plug	2	
5	8M104	Oil release passage	2	Use TAM2009 85 on
6	CAM150	Block to head stud long	3/4	Qty decreased for TAM1617
7	CAM151	Block to head stud short	5/6	Extra for Cooper 'S'
7	TAM1617	Block to head stud short	1	Extra threads to hold coil
8	Bolt01	Filter to block bolt	2	For spin on filter only
8	53K615	Filter to block stud	2	For paper element
9	CHS2515	Petrol pump stud	2	
10	2A54	Dowel - main bearing cap	6	Except 1300cc
10	12G1268	Dowel - main bearing cap	6	1300cc Except 'S'
11	1A1964	Camshaft oil feed restrictor	1	
12	12A1910	Mains bolt	6	Except 1300cc
12	12G1398	Mains bolt	6	1300cc
13	AEG323	Mains stud set (6 studs)	1set	Cooper 'S' only
14	C-AJJ4013	Mains nut set (6 nuts)	1set	Cooper 'S' only
15	12G164	Liner	4	Not 'S' or 1300cc
15	SU3875	Liner (was AEG239)	4	1300cc, all 'S'
16	VPC989	Camshaft liner bearings	1	1300cc, all 'S'
16	VPC956	Camshaft liner bearings	1	Not 1300cc, 'S'
17	53K2853	Drain plug	1	
18	6K838	Drain plug washer	1	
19	3H576	Tap cylinder drain	1	N.L.A.
20	2A265	Petrol pump blanking plate, (uses CAM6657B gasket)	1	
21	22H983	Engine to gearbox case dowel	1	
22	6K927	Main bearing lock tab except Cooper 'S'/1300cc	6	
23	15037	850 Piston set 8.3 to 1 CR	1	
23	20773	998 Piston set 4 ring	1	
23	20950	998 Powermax flat top piston set	1	
23	16309	998 Dished piston set 8.3 to 1 CR	4	Circlip type gudgeon pin
23	ADU3490	998 Flat top piston 10.3 to 1 CR	4	Circlip type gudgeon pin
23	TAM2052	998 Flat top piston 10.3 to 1 CR	4	Press fit gudgeon pin
23	TAM2054	998 Dished piston 8.3 to 1 CR	4	Press fit gudgeon pin
23	16179	1100 Dished piston 8.5 to 1 CR	1	
23	21250	1275 Piston set 9.4 to 1 CR	1	Metric ring sizes
23	21251	1275 Piston set 8.8 to 1 CR	1	Metric ring sizes
23	21253	1275 Piston set 9.7 to 1 CR	1	Metric ring sizes
23	20747	1275 Powermax 9.7 to 1 CR	1	Metric ring sizes
23	21882	1275 Powermax flat top	1	Metric ring sizes
23	C-AJJ3378	1275 Omega dished piston set 9.7 to 1 CR	1	20/40/60 oversizes
23	C-AJJ3382	1275 Omega flat top piston set	1	20/40/60 oversizes

See following page for piston rings and ring sizes.

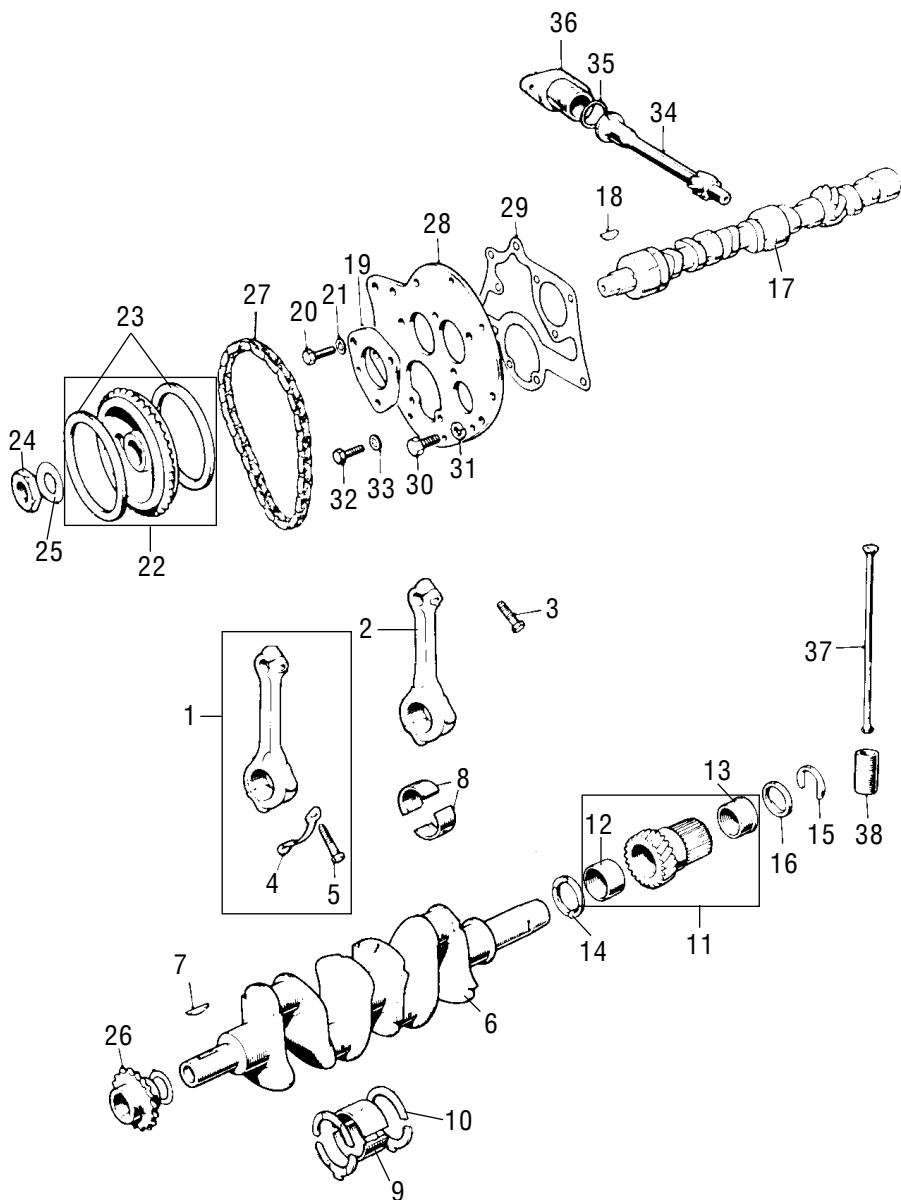
PISTON RINGS AND SIZES

Engine & Bore Size	Rings including oil ring & ring size	Hepolote ring part number	Rover ring part # STD & /20 only	Piston part number	Piston shape	Remarks
<i>850cc</i> 62.916mm 2.477" std /20 /30 /40 /60	4 3x.070" 1x 0.125"	RA8576	BHM1161			Use 15037
	5 3x.070" 2x 0.125"	RA8577		15037		
<i>998cc</i> <i>Cooper</i> 2.542" std /20 /30 /40 /60	3 2x .0625" 1x 0.1575"	R39400		20950	Flat top 20950 with 9.7 CR	Powermax was 18516
	4 3x .0625" 1x 0.125"	R32026	BHM1162	12A674	Flat top with raised "D"	Rings also fit 18516
<i>998cc</i> 64.567mm 2.542" std /20 /30 /40 /60	4 3x .0625" 1x .125"	R32026	BHM1162	12A673 16309	Dished Piston with 8.3 CR	to 1979
	4 3x .0625" 1x .1575"	R33636	BHM1281	ADU3920	Flat Top with 10.3 CR	1980 on, until changed to 3 ring pistons
	4 3x .0625" 1x .1575"	R33636	BHM1281	ADU3922 20773	Dished Piston with 8.3 CR	
	3 2x .0625" 1x .1575"	R39400	BHM1415	ADU3490	Flat Top with 10.3 CR	3 ring pistons up to introduction of press fit gudgeon pin, 1988
	3 2x .0625" 1x .1575"	R39400	BHM1415	ADU4203	Dished Piston with 8.3 CR	
	3 2x .58" 1x .1181"		BHM1629	TAM2052	Flat Top	Press fit gudgeon pin only, 1989 on
	3 2x .58" 1x .1181"		BHM1629	TAM2054	Dished	
<i>1100cc</i> 64.567mm 2.542" std /20 /30 /40 /60	4 3x .0625" 1x .1250	RA17926	BHM1162	20397	7.0cc Dish	
	5 3x .0625" 2x .125"	RA17927		16179	3.0cc Dish	
	3 2x .0625" 1x .1575"	RA17926		18520KR	Flat Top	

PISTON RINGS AND SIZES

Engine & Bore Size	Rings including oil ring & ring size	Hepolote ring part number	Rover ring part # STD & /20 only	Piston part number	Piston shape	Remarks
1275cc 70.625mm 2.780"std /20 /30 /40 /60	4 3x .0625" 1x .1562"	RA21576	BHM1164	17271	Dished 8.8 CR	1275GT & 1275 non
	4 3x .0625" 1x .1562"	RA21576	BHM1284	20394	Dished 8.8 CR	1275GT & 1275 non "S"
	3 2x .0591" 1x .1575"	RA35960		21251	Dished 8.8 CR	Latest Metric piston
	4 3x .0469" 1x .1562"	RA19520 can use RA39380	BHM1165 std/20 oversize	AEG143	Dished 9.7 CR	Original "S" 1300GT, use
	3 2x .0625" 1x .1562"	RA26686	BHM1166	19320	Dished 9.7 CR	Later "S" and 1300/1275GT
	3 2x .0591" 1x .1181"	R41570		21253	Dished 9.7 CR	Metric Sized Pistons
	3 2x .0591" 1x .1575"	R35960		21250	Dished 9.4 CR	Metric Sized Pistons
	3 2x .0625" 1x .1575"		BHM1260	ADU5704	Dished 9.4 CR	Turbo Mini
Powermax Competition 70.625mm 2.780" std /20 /40 /60	3 2x .0469" 1x .1562"	R39380 CWE Can use R19520	BHM1415	18517	Dished 9.7 CR	Forged, use 20747
	3 2x .0469" 1x .1562"	R39380		18518	Flat Top	use 21882
	3 2x .0469" 1x .1562"	R39380		20747	Dish - 6.6cc 9.7 CR	Squeeze Cast
	3 2x .0469" 1x .1562"			20739	Flat Top	Squeeze Cast use 21882
OMEGA 73.5mm	3 1x .0394" 1x .0469" 1x .1181	R41720		21882	Flat Top	Squeeze Cast
	3 2x .047" 1x .1575"	C-AJJ3379		C-AJJ3378 C-AJJ3382	Dished Flat Top	Hi-grade cast light alloy
	3 2x .047" 1x .1575"	OMEGA1		See Performance Parts (Section 12)	7 or 11cc Dish or	Hi-grade cast light alloy
	3 2x .047" 1x .1575"	OMEGA5			Flat Top	Hi-grade cast light alloy
Powermax 73.5mm std, +20 only	3 2x .0591" 1x .1575	R39390		20659	Dished 9.6 CR	Squeeze Cast 1275-1380cc

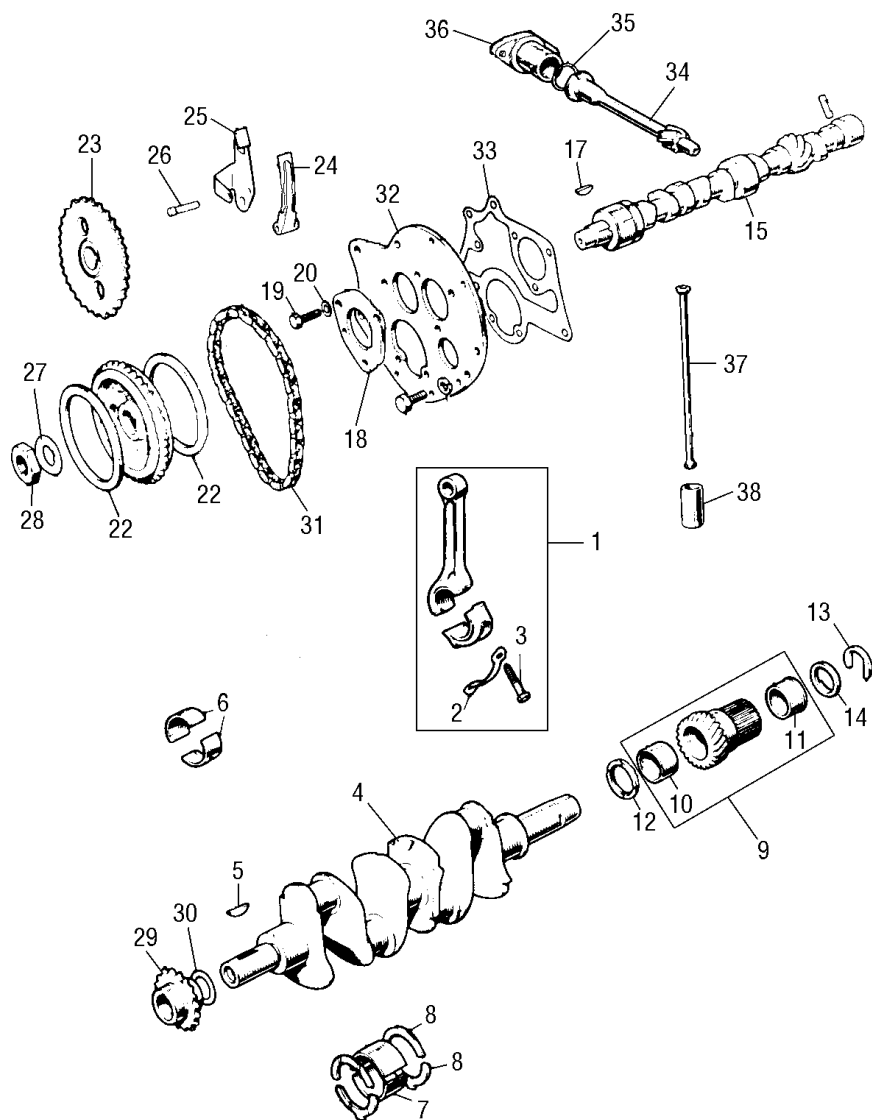
850cc MINI AND 997cc COOPER BLOCK



850CC MINI AND 997CC COOPER BLOCK

NO.	PART NO.	DESCRIPTION	QTY	REMARKS
1	12A1626	Connecting rod no. 2 and 4	2	
2	12A1627	Connecting rod no. 1 and 3	2	
3	51K1382	Small end bolt	4	NLA
4	2A660	Locktab for con rod bolt	4	
5	12G2217	Big end bolt	8	
	BEB-08	High-grade bolt set	1	
6	8G2734	Crankshaft 1.5" diameter tail size (12A670 casting)	1	850cc
6	12A298	Crankshaft 1.5" diameter tail size (12A298 casting)	1	NLA 997cc
7	6K836	Crankshaft key	1	
8	VP572/size	Con rod bearing set	1	
9	9M132/size	Mains bearing set journal width 1.185 thou 30.10mm	1	850cc
9	VP733/size	Mains bearing set journal width 1.064 thou 27.05mm	1	850/997cc
10	2T4092	Thrust washer set VPW94	1	850cc
10	VPW81	Thrust washer set	1	997cc
11	22A493	Primary gear only fits 1.5" diameter crank tail only	1	Not early 850 1.375"
12	22G401	Bush front for cranks with 1.5" diameter (DAM8887)	1	
13	22G109	Bush rear for cranks with 1.5" diameter	1	
14	22A321	Thrust washers 2.79-2.84mm (.110-.112")	1	These shims are used to
14	22A322	Thrust washers 2.84-2.89mm (.112-.114")	1	give the correct end
14	22A323	Thrust washers 2.89-2.94mm (.114-.116")	1	float of 3-6 thou on the
14	22A324	Thrust washers 2.94-2.99mm (.116-.118")	1	primary gear, check 22A319
14	22A450	Thrust washers 2.99-3.04mm (.118-.120")	1	and 88G459 for wear.
15	22A319	U Clip thrust washer	1	
16	88G549	Backing ring	1	
17	8G712	Camshaft	1	850cc
17	2A948	Camshaft (also- 88G229)	1	997cc
18	WKN505	Key	1	
19	AHU2379	Camshaft plate was 2A84	1	
20	GHF117	Locating plate bolt	3	
21	GHF321	Locating bolt shake-proof washer	3	
22	2A85	Camshaft gear with tensioners	1	
23	8G549	Tensioner rubber rings	2	
24	6K629	Camshaft nut	1	
25	2A759	Locktab	1	
26	8G725	Crankshaft gear	1	
27	3H2127	Timing chain	1	
28	2A970	Front plate	1	NLA
29	12G619	Gasket	1	
30	GHF120	Screw, plate to block	2	
31	LWZ305	Washer	2	
32	53K2016	Screw plate to maincap	2	
33	WF600041	Washer (Landrover part)	2	
34	12G4499	Distributor drive spindle	1	
35	13H2792	'O' Ring distributor housing	1	
36	12A1136	Distributor housing	1	NLA
37	2A14	Push rod	8	
38	2A13	Cam follower	8	
38	AE6584	Cam follower with oil hole	8	High grade

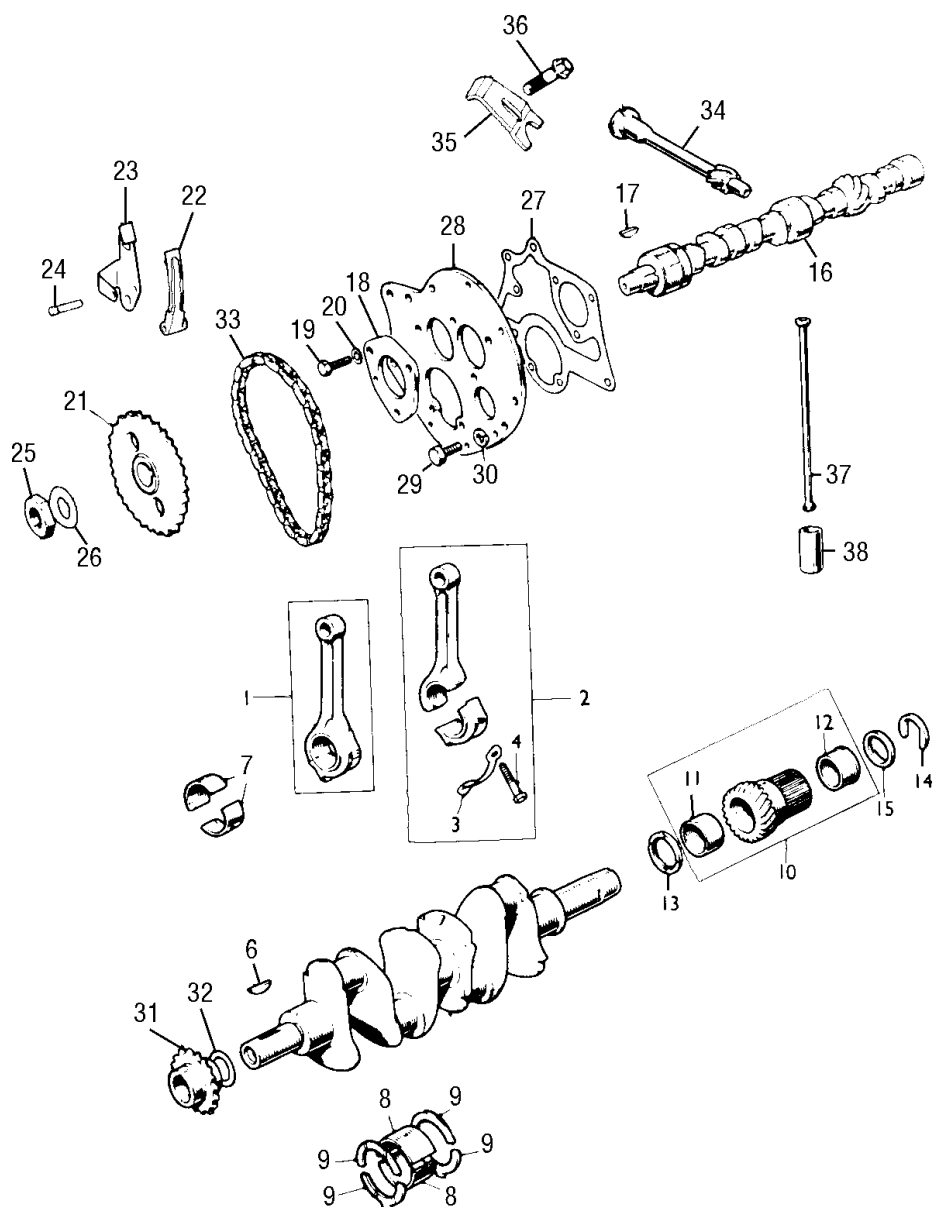
998cc, 1100cc AND 998cc COOPER - TO 1980



998CC, 1100CC AND 998CC COOPER - TO 1980

NO.	PART NO.	DESCRIPTION	QTY	REMARKS
1	12G123	Connecting rod number 2 and 4	2	
1	12G126	Connecting rod number 1 and 3	2	
2	2A660	Locktab	4	
3	12G2217	Big end bolt	8	
	BEB-08	High-grade bolt kit	1	
4	8G2733	Crankshaft (casting number 12A595) (12A1451)	1	998cc and Cooper 998cc
4	8G2732	Crankshaft (casting number 12G82)	1	1100cc
5	6K836	Crankshaft key	1	
6	VP572	Con rod bearings	1	Also in 10/20/30/40 oversize
7	VP733	Mains bearings	1	Also in 10/20/30/40 oversize
8	VPW81	Thrust washer set	1 set	Also in 03/30 thou oversize
9	22A1493	Primary gear (24 teeth)	1	
10	DAM8887	Bush front was 22G401	1	
11	22G109	Bush rear	1	
12	22A321	Thrust washers 2.79-2.84mm (.110-112")	1	These shims are used to
12	22A322	Thrust washers 2.84-2.89mm (.112-114")	1	give the correct end float
12	22A323	Thrust washers 2.89-2.94mm (.114-116")	1	of 3-6 thou on the primary
12	22A324	Thrust washers 2.94-2.99mm (.116-118")	1	gear check 22A319 and
12	22A450	Thrust washers 2.99-3.04mm (.118-120")	1	88G459 for wear.
13	22A319	U Clip thrust	1	
14	88G549	Backing ring	1	
15	AEA630	Camshaft	1	1100cc and 998cc Cooper
15	8G712	Camshaft	1	998cc
16	2A299	Camshaft oil pump drive	1	NLA (Fitted in camshaft new)
17	WKN505	Camshaft key pin	1	
18	AHU2379	Camshaft plate	1	
19	GHF117	Locating plate bolt	3	
20	GHF321	Locating bolt shakeproof washer	3	
21	2A85	Camshaft gear with tensioners	1	
22	8G549	Tensioner rubber rings	2	
23	12G4337	Camshaft gear, used originally without tensioner	1	
24	12G2621	Tensioner, fits 12G2626 front plate only	1	From engine number
25	12G2628	Tensioner mounting plate	1	99H791, 10H791
26	12G2629	Pivot pin	1	Not 998 Cooper
27	6K629	Camshaft nut	1	
28	2A759	Camshaft locktab	1	
29	8G725	Crankshaft gear	1	
30	6K628	Washer to shim crank gear	1	
31	3H2127	Timing chain (Simplex)	1	
32	2A970	Front plate - pre tensioner type	1	NLA
32	12G2626	Front plate - used with tensioner pads	1	
33	12G619	Gasket for 2A970 front plate	1	
33	12G2981	Gasket for 12G2626 front plate	1	
34	12G4499	Distributor drive spindle	1	
35	13H2792	'O' ring distributor housing	1	
36	12A1136	Housing	1	CWE
37	2A14	Push rod	8	
38	2A13	Cam follower	8	
38	AEG584	Cam follower with oil hole	8	High-grade

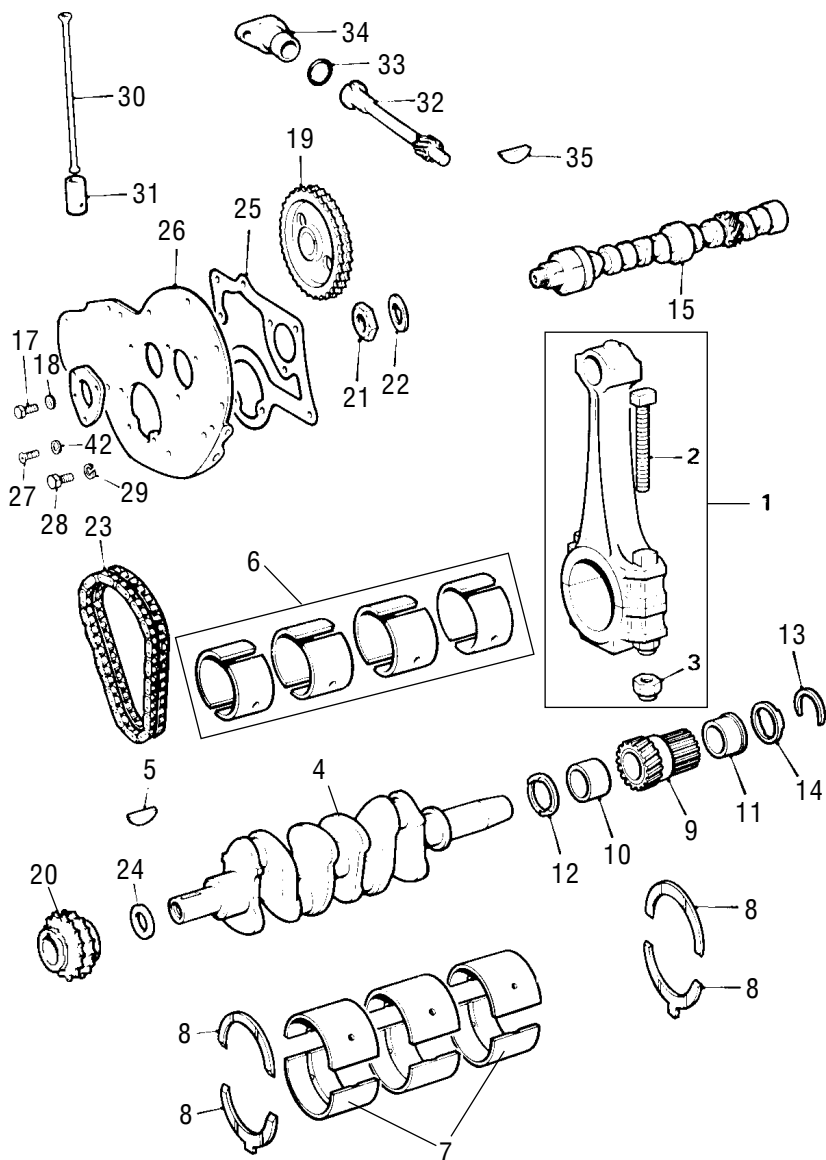
998cc, 1981 ON, A-PLUS BLOCK



998CC, 1981 ON, 'A' PLUS BLOCK

NO.	PART NO.	DESCRIPTION	QTY	REMARKS
1	12G123	Connecting rod number 2 and 4	2	
2	12G126	Connecting rod number 1 and 3	2	
1	12A1997	Connecting rod number 2 and 4	2	1985 on, press fit gudgeon
2	12A1999	Connecting rod number 1 and 3	2	pin (piston has no circlips)
3	2A660	Locktab, deleted when CAM6126 fitted	4	Deleted after 1981
4	CAM6126	Connecting rod bolt, replaced 12G2219	8	BEB-08 High-grade
5	BHM1436	Crankshaft, 8G2733 fitted until 1984	1	
6	6K836	Crankshaft keyway	1	
7	VP572	Con rod bearings	1	Also in +10/20/30/40 o/size
8	BHM1573	Main bearing (center locating lip) 1985 on	1	Also in +10/20 oversize
8	VP733	Main bearing, locating lug on edge of both halves	1	Also in +10/20/30/40 o/size
9	VPW81	Thrust washer set	1	Also in 03/30 thou oversize
10	22A1493	Primary gear (24 teeth), old type	1	
10	DAM8888	Primary gear (29 teeth), A plus	1	
11	DAM8887	Front bush, was 22G401	1	
12	22G109	Bush rear	1	
13	22A321	Thrust washer 2.79-2.84mm (.110-.112")	1	These shims are used to
13	22A322	Thrust washer 2.84-2.89mm (.112-.114")	1	give correct end float
13	22A323	Thrust washer 2.89-2.94mm (.114-.116")	1	of the primary gear which
13	22A324	Thrust washer 2.94-2.99mm (.116-.118")	1	is 3-6 thou. Also check
13	22A450	Thrust washer 2.99-3.04mm (.118-.120")	1	22A319 & 88G459 for wear.
14	22A319	Thrust washer U clip	1	
15	88G549	Backing ring	1	
16	CAM6267	Camshaft, 99H/B83P/B85P/D83P/E22	1	LC engine
16	CAM4717	Camshaft, 99H/B81P/B82P/D80P/D81P/D82P/E20/E21 ...	1	HC engine
17	WKN505	Camshaft key	1	
18	AHU2379	Camshaft locating plate	1	
19	GHF117	Locating plate bolt	3	
20	GHF321	Locating bolt shakeproof washer	3	
21	12G4337	Camshaft gear	1	
22	12G2621	Tensioner pad	1	
23	12G2628	Tensioner mounting plate	1	
24	12G2629	Tensioner pin	1	
25	6K629	Camshaft nut	1	
26	2A759	Locktab	1	
27	CAM4700	Front plate gasket	1	
28	12G2626	Front plate	1	
29	GHF120	Bolt for plate to block	2	
30	GHF332	Spring washer	2	
31	8G725	Crankshaft gear	1	
32	6K628	Crank gear shim washer	1	
33	3H2127	Timing chain	1	
34	12G3560	Distributor drive spindle	1	
35	613867A	Distributor retaining plate	1	
36	CAM6105	Retainer screw	1	
37	2A14	Push rod	8	
38	2A13	Cam follower	8	
38	AEG584	Cam follower with hole	1	High-grade

970cc 1070cc AND 1275cc BLOCK • COOPER S MK1/MK2

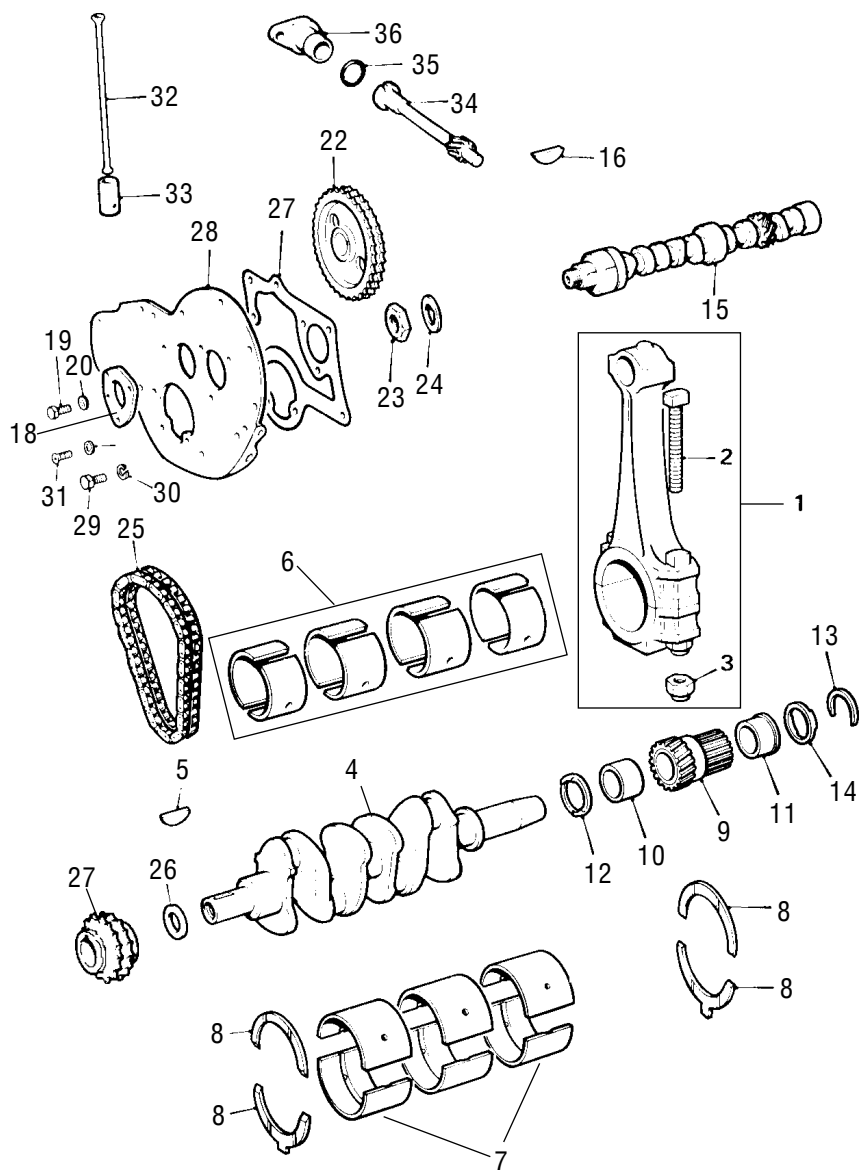


COOPER 'S' 970cCC 1070CC AND 1275CC MK1/MK2

NO.	PART NO.	DESCRIPTION	QTY	REMARKS
1	AEG624	Connecting rod, 5.75" centers	4	1071cc, 1275cc
1	AEG309	Connecting rod, 5.875" centers	4	970cc only
2	AEG519	Connecting rod bolt (Hi-specification bolt use BE6001+)	8	
3	AEG147	Connecting rod nut (Alternative non nyloc EAC5541A)	8	
4	C-AEG329	Crankshaft (Steel billet EN40B)(AEG330 casting)	1	970cc
4	C-AEG170	Crankshaft (Steel billet EN40B)(AEG171 casting)	1	1071cc
4	C-AEG479	Crankshaft (Forging crossdrilled EN40B)(AEG480 casting) ...	1	1275cc
5	6K836	Crankshaft keyway	1	
6	VP572	Connecting rod bearings set (8G2399)	1	Oversize available
7	VP91120	Main bearings set (8G2391)	1	Oversize available
8	VPW41	Thrust washer kit	1	Available 03/15/30 oversize
9	22G1053	Primary gear (24 teeth)	1	
10	DAM8889	Front bush, was 22G770	1	
11	22G109	Rear bush	1	
12	DAM6490	Primary gear shim 2.84-2.89mm (.112-.114")	1	These shims are used to give the correct end float of 3-6 thou on the primary gear check 22A319 and 88G459 for wear.
12	DAM6486	Primary gear shim 2.89-2.94mm (.114-.116")	1	
12	DAM6487	Primary gear shim 2.94-2.99mm (.116-.118")	1	
12	DAM6488	Primary gear shim 2.99-3.04mm (.118-.120")	1	
12	DAM6489	Primary gear shim 3.04-3.09mm (.120-.122")	1	
13	22A319	Thrust washer U clip	1	
14	88G549	Backing ring	1	
15	AEG148	Camshaft	1	
15	AEG510	Camshaft	1	1275 only, 9FSAY 40006 on
16	AHU2379	Camshaft locating plate	1	
17	GHF117	Locating plate screw	1	
18	GHF321	Shakeproof spring washer	1	

2

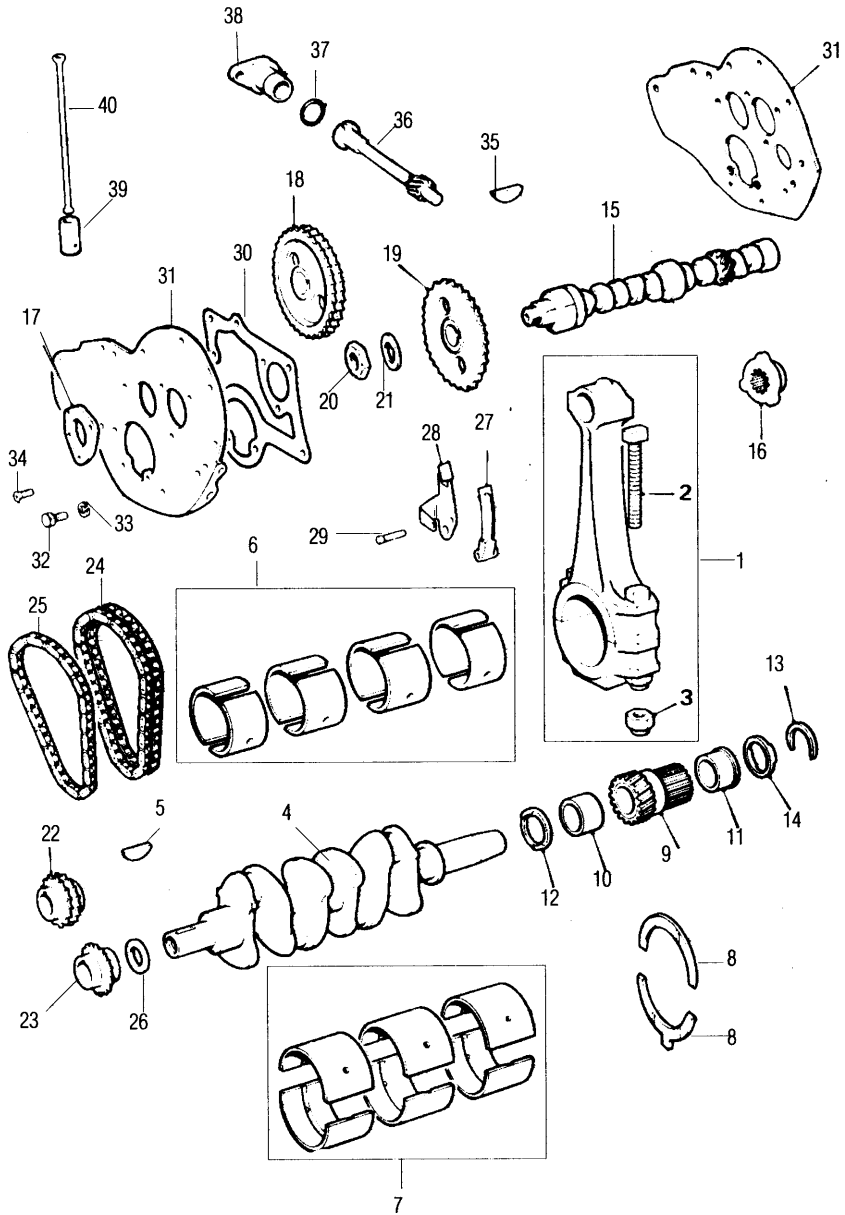
1275CC COOPER S MK3 • BLOCK COMPONENTS



**COOPER 'S' MK3 (12H397 AND 12H398) AND 12G ENGINE NUMBERS AS FITTED TO EARLY
MG, WOLSELEY, RILEY, PRINCESS, 1300CC**

NO.	PART NO.	DESCRIPTION	QTY	REMARKS
1	AEG624	Connecting rod	4	
2	AEG519	Con rod bolt	8	
2	BE6001	Con rod bolt set, ARP Comp grade	1	
3	AEG147	Con rod bolt nut (EAC5541A non nyloc alternative)	8	
4	AEG623	Original crankshaft in EN16, tuftrided (12G1505 casting)	1	NLA, use C-AEG479
4	C-AEG479	Crankshaft (AEG480 casting)	1	1275 'S' (Nitrided only)
4	12G1287	Crankshaft (fitted solid wall block, 1300 mains size)	1	12G type 1.625" journal
5	6K836	Crankshaft keyway	1	
6	VP572	Con rod bearing set (8G2399)	1	Also in 10/20/30/40 oversize
7	VP91120	Main bearings set (8G2301)	1	Also in 10/20/30/40 oversize
8	VPW41	Thrust washer kit (BHM1293)	1	Also in 03/30 thou oversize
9	22G1053	Primary gear (24 teeth)	1	
10	DAM8889	Front bush was 22G770	1	
11	22G109	Rear bush	1	
12	DAM6490	Primary gear shim 2.84-2.89mm (.112-.114")	1	These shims are used to give the correct end float of 3-6 thou on the primary gear check 22A319 and 88G459 for wear.
12	DAM6486	Primary gear shim 2.89-2.94mm (.114-.116")	1	
12	DAM6487	Primary gear shim 2.94-2.99mm (.116-.118")	1	
12	DAM6488	Primary gear shim 2.99-3.04mm (.118-.120")	1	
12	DAM6489	Primary gear shim 3.04-3.09mm (.120-.122")	1	
13	22A319	Thrust washer U clip	1	
14	88G549	Backing ring	1	
15	AEG523	Camshaft	1	1300cc
15	AEG542	Camshaft	1	Cooper 'S'
16	WKN505	Keyway	1	
17	CHM108	Oil pump driving flange	1	
18	AHU2379	Camshaft locating plate	1	
19	GHF117	Bolt for locating plate	3	
20	GHF321	Shakeproof washer for locating plate	3	
21	12G1397	Camshaft gear cast iron	1	Gears and chains available as C-AJJ3323 Duplex kit in cast iron. Or C-AJJ3325 in lightened steel.
22	12G1699	Crankshaft gear cast iron	1	
23	6K629	Camshaft nut	1	
24	2A759	Locktab	1	
25	2H4905	Chain	1	
26	6K628	Washer to shim crank gear	A/R	
27	12G619	Front plate gasket	1	
28	AEG161	Front plate	1	NLA
29	SH605051	Screw plate to block	2	
30	GHF332	Washer was LWZ305	2	
31	AEA687	Screw, front plate to maincap	2	
32	AEG314	Push rod	8	
33	AEG584	Cam follower with oil hole	8	
34	12G4499	Distributor spindle	1	
35	13H2792	Distributor housing oil seal	1	
36	12A1136	Distributor housing	1	CWE

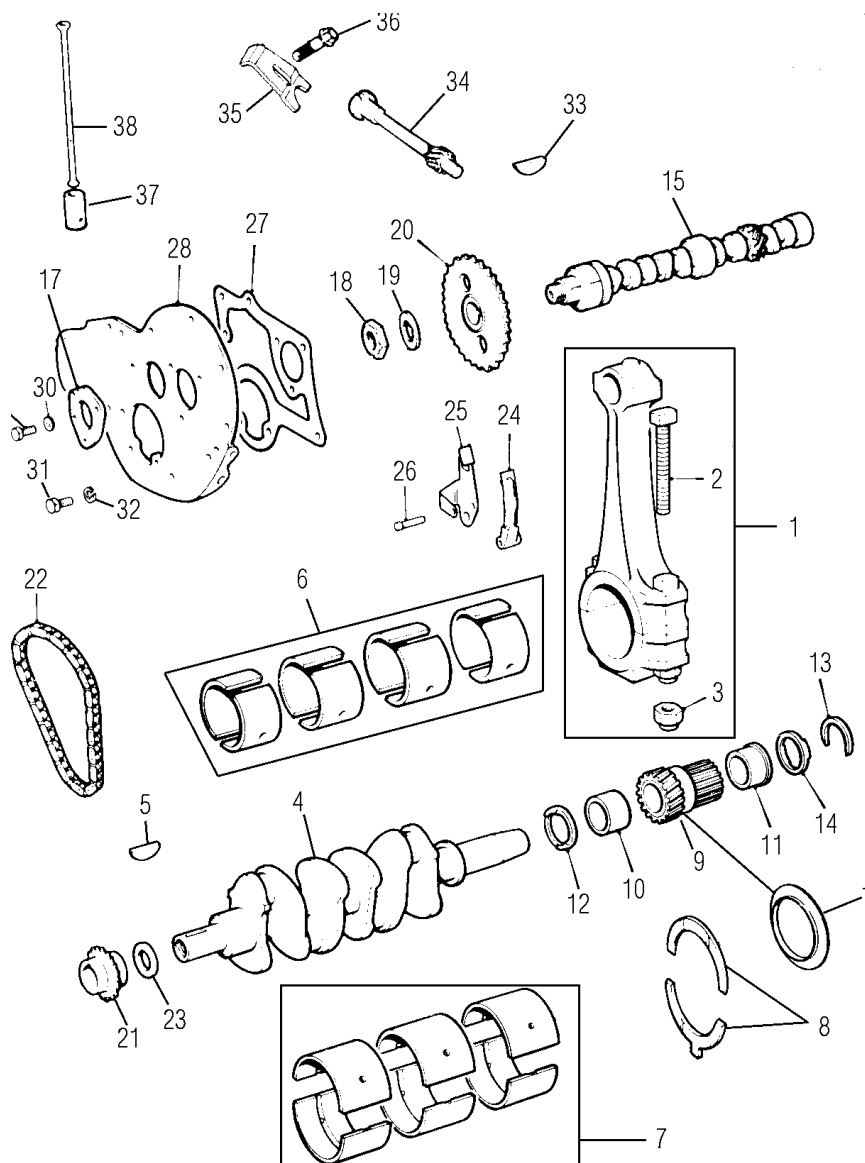
1275CC EXCEPT COOPER S PRE A-PLUS



PRES 'A' PLUS 1275 WITH 12H ENGINE NUMBER EXCEPT COOPER 'S'

NO.	PART NO.	DESCRIPTION	QTY	REMARKS
1	BHM1137	Con rod set	1	
2	12G1300	Con rod bolt, 1300	8	
2	C-STR317	High strength rod bolt set	1	
3	13H5872	Con rod nut	8	
4	CAM6232	Crankshaft (rolled radius journals CAM6232 casting)	1	Was BHM1243
4	8G2740	Original crank with 12G1505 casting	1	Reground only
5	6K836	Crankshaft keyway	1	
6	VP91306	Con rod bearing, (8G2553)	1	Available in 10/20/30/40
7	VP91120	Mains bearing, (8G2301)	1	Available in 10/20/30/40
8	VPW41	Thrust washer set, (BHM1293)	1	Available in 03/30 thou
9	12G1053	Primary gear 24 teeth	1	
9	DAM8890	Primary gear 29 teeth (A plus)	1	12H706AA, 23201 on
10	DAM8889	Bush front	1	
11	22G109	Bush rear	1	
12	DAM6490	Primary gear shim 2.84-2.89mm (.112-.114")	1	These shims are used to give the correct end float of 3-6 thou on the primary gear. Check 22A319 and 88G459 for wear.
12	DAM6486	Primary gear shim 2.89-2.94mm (.114-.116")	1	
12	DAM6487	Primary gear shim 2.94-2.99mm (.116-.118")	1	
12	DAM6488	Primary gear shim 2.99-3.04mm (.118-.120")	1	
12	DAM6489	Primary gear shim 3.04-3.09mm (.120-.122")	1	
13	22A319	Thrust washer U clip	1	
14	88G549	Backing ring	1	
15	AEG523	Camshaft	1	
16	CHM108	Oil pump driving flange	1	
17	AHU2379	Camshaft retainer plate	1	
18	12G1397	Camshaft gear duplex	1	
19	12G4337	Camshaft gear simplex	1	12H706AA, 3997 on
20	6K629	Camshaft nut	1	
21	2A759	Camshaft locktab	1	
22	12G1699	Crankshaft gear duplex	1	
23	8G725	Crankshaft gear simplex	1	12H706AA, 3997 on
24	2H4905	Timing chain duplex	1	
25	3H2127	Timing chain simplex	1	
26	6K628	Washer to shim crank gear	A/R	As required
27	12G2621	Tensioner (only fits 12G2626 front plate)	1	Simplex only
28	12G2628	Tensioner mounting plate	1	
29	12G2629	Tensioner pivot pin	1	
30	12G619	Front plate gasket for AEG161	1	
31	AEG161	Front plate duplex	1	NLA
31	12G2626	Front plate simplex	1	12H706AA, 3997 on
32	SH605051	Screw-plate to crankcase	2	
33	GHF321	Washer	2	
34	AEA687	Screw, front plate to mains cap	2	Duplex only
34	53K2016	Screw, front plate to mains cap	2	Simplex
35	WKN505	Keyway camshaft	1	
36	12G4499	Distributor drive spindle	1	
37	13H2792	Distributor housing oil seal	1	
38	12A1136	Distributor housing	1	NLA
39	2A13	Cam follower	8	
39	AEG584	Cam follower with oil hole	8	
40	AEG314	Push rod	8	

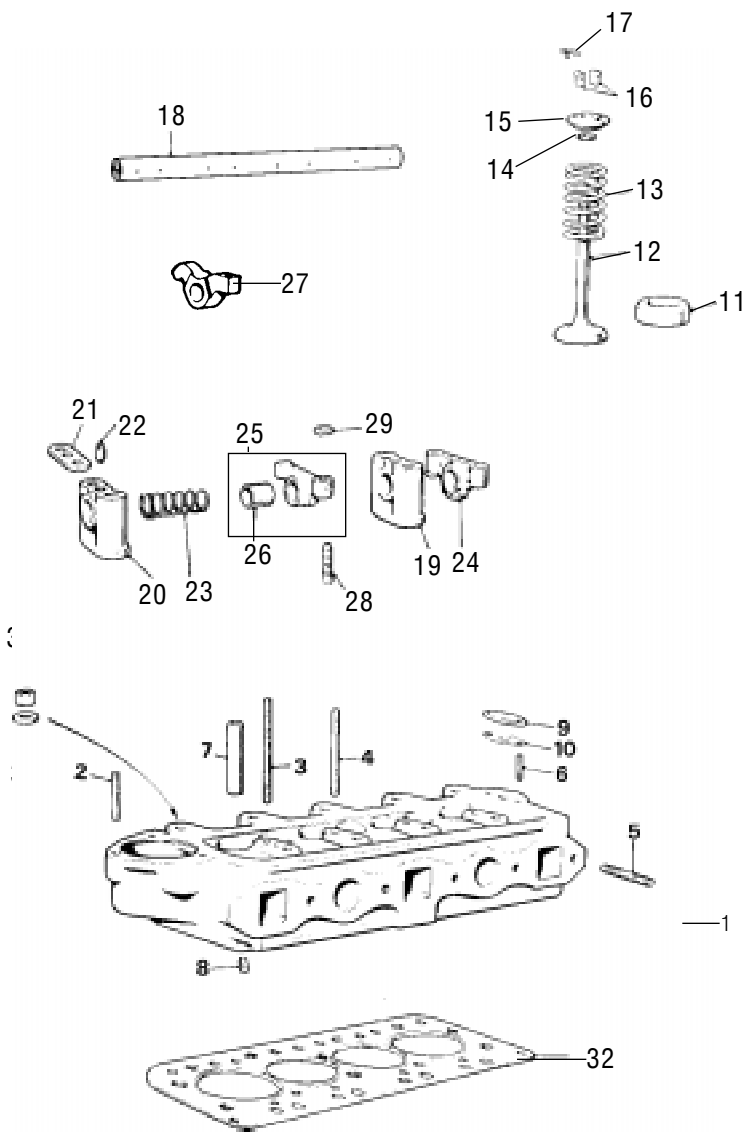
1275CC ENGINES (12H) A-PLUS BLOCKS



'A' PLUS BLOCKS 1275 ENGINES WITH 12H ENGINE NUMBER

NO.	PART NO.	DESCRIPTION	QTY	REMARKS
1	BHM1137	Con rod set	1	
2	LFH10006	Con rod bolt, alternative hi-spec set C-STR317	8	
3	CAM6263	Con rod nut	8	
4	CAM6232	Crankshaft rolled radius journals (CAM6232 casting)	1	Was BHM1437
5	6K836	Crankshaft keyway	1	
6	VP91306	Con rod bearing set	1	
7	BHM1574	Center locating tab, main bearings	1	All Turbo and 85 on
7	VP91120	Main bearing set,	1	
7	BHM1471	Main bearing set, no oil groove in lower shell	1	Metro
8	VPW41	Thrust washer set,	1set	In 03/15/30 thou oversize
9	DAM8890	Primary gear (29 teeth) Interchangeable fitment	1	Standard fitment
9	DAM9373	Primary gear (30 teeth) Interchangeable fitment	1	Economy gear
10	DAM8889	Bush, front	1	
11	22G109	Bush, rear	1	
12	DAM6490	Primary gear shim 2.84-2.89mm (.112-.114")	1	These shims are used to give the correct end float of 3-6 thou on the primary gear. Check 22A319 and 88G549 for wear.
12	DAM6486	Primary gear shim 2.89-2.94mm (.114-.116")	1	
12	DAM6487	Primary gear shim 2.94-2.99mm (.116-.118")	1	
12	DAM6488	Primary gear shim 2.99-3.04mm (.118-.120")	1	
12	DAM6489	Primary gear shim 3.04-3.09mm (.120-.122")	1	
13	22A319	Clip U washer	1	
14	88G549	Backing ring	1	
15	12G2983	Camshaft	1	
15	CAM6648	Camshaft as per MG Metro	1	
16	DAM2821	Plastic oil seal protector	1	Verto clutches
17	AHU2379	Camshaft retainer plate	1	
18	6K629	Camshaft retainer nut	1	
19	2A759	Camshaft locktab	1	
20	8G725	Crankshaft gear simplex	1	12H706AA, 3997 on
22	3H2127	Timing chain simplex	1	
23	6K628	Washer to shim crank gear	A/R	As required
24	12G2621	Tensioner (only fits 12G2626 front plate)	1	Simplex only
25	12G2628	Tensioner mounting plate	1	
26	12G2629	Tensioner pivot pin	1	
27	CAM4700	Front plate gasket for AEG161	1	
28	AEG161	Front plate duplex	1	NLA
28	12G2626	Front plate simplex	1	12H706AA, 3997 on
31	SH605051	Screw-plate to crankcase	2	
32	GHF321	Washer	2	
31	AEA687	Screw, front plate to mains cap	2	Duplex only
33	WKN505	Keyway camshaft	1	
34	12G3560	Distributor drive spindle	1	
35	613857A	Distributor hold down clamp	1	
36	CAM6105	Bolt	1	
39	2A13	Cam follower	8	
39	AEG584	Cam follower with oil hole	8	
40	AEG314	Push rod	8	

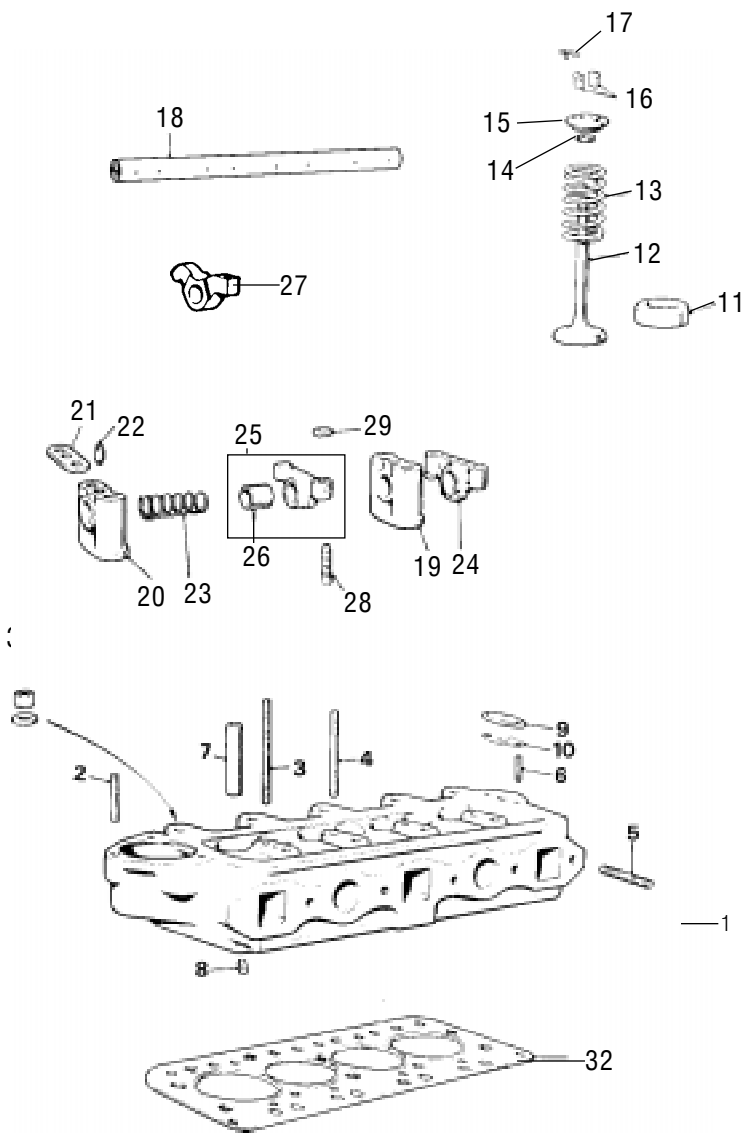
CYLINDER HEADS 850cc, 998cc & 1100cc PRE A-PLUS



CYLINDER HEAD 850CC, 998CC AND 1100CC PRE 'A' PLUS TO 1980

N.	PART NO.	DESCRIPTION	REMARKS
1	12A1455	Cylinder head (12A1456 head casting)	1 850cc and 998cc
1	28G193	Cylinder head (12G202 head casting)	1 1100cc
2	CHS2515	Stud, water elbow outlet	3
3	51K885	Stud, rocker cover	2
4	51K1473	Stud, rocker cover short	2 2.6875" (68mm long)
5	53K487	Stud, manifold	6
6	53K402	Stud, heater valve	2
7	12G1111	Valve guide - was 2A608	8 850cc and 998cc
7	12A186	Valve guide	8 1100cc
8	6K808	Oil hole plug	1 1100cc
8	2K1345	Oil hole plug	1 850cc and 998cc
9	2A180	Heater tap blanking plate	1 When required
10	88G221	Heater take off gasket	1
11	TAM2068	Valve seat insert exhaust	4 lead free
11	TAM2152	Valve seat insert inlet	4 lead free
12	2A877	Inlet valve large collet groove	4 850cc and 998cc
12	CAM6391	Inlet valve small collet groove 1.094"	4 850cc and 998cc
12	12G3036	Inlet valve small collet groove	4 1098cc
12	AEA574	Inlet valve large collet groove 1.15"	4 1098cc
12	AEA434	Exhaust valve large collet groove 1.0"	4
12	12A1987	Exhaust valve small collet groove	4
13	AEA311	Valve spring	8
14	2A879	Valve oil seal	8
15	88G616	Top cap for large collet groove	8
15	88G617	Top cap for small collet groove	8
16	2A11	Valve cotter for 88G616 large collet groove	8pr NLA
16	88G459	Valve cotter for 88G617 small collet groove	8pr
17	2A12	Circlip for valve cotters	8 No longer required
18	12A1950	Rocker shaft	1
19	12G1926	Rocker shaft post with oil hole	3
20	12G1927	Rocker shaft post tapped	1
21	2A515	Rocker post locking plate	1 NLA use 2A259
22	2A258	Locating plug	1
23	6K556	Rocker spacer spring	3
24	2A964	Rocker pressed steel, original	NLA Use 12G1221 or CAM289
25	12G1221	Rocker forged	8 Alternative
26	2A21	Bush	8 Not for CAM289
27	CAM289	Rocker sintered non bush type	8
28	AEG167	Rocker screw	8 Thread size 5/16 UNF
28	12A1215	Rocker screw for 2A964	8 NLA
29	6K654	Adjuster nut	8 7/16 AF wrench size
29	NT605061	Adjuster nut for 12G1221 and CAM289	8 1/2 AF wrench size
30	51K1193	Cylinder head nut	9
31	GHF302	Head nut washer	8
32	GEG302	Cylinder head gasket,	1
32	TAM2121	Cylinder head gasket, copper	1

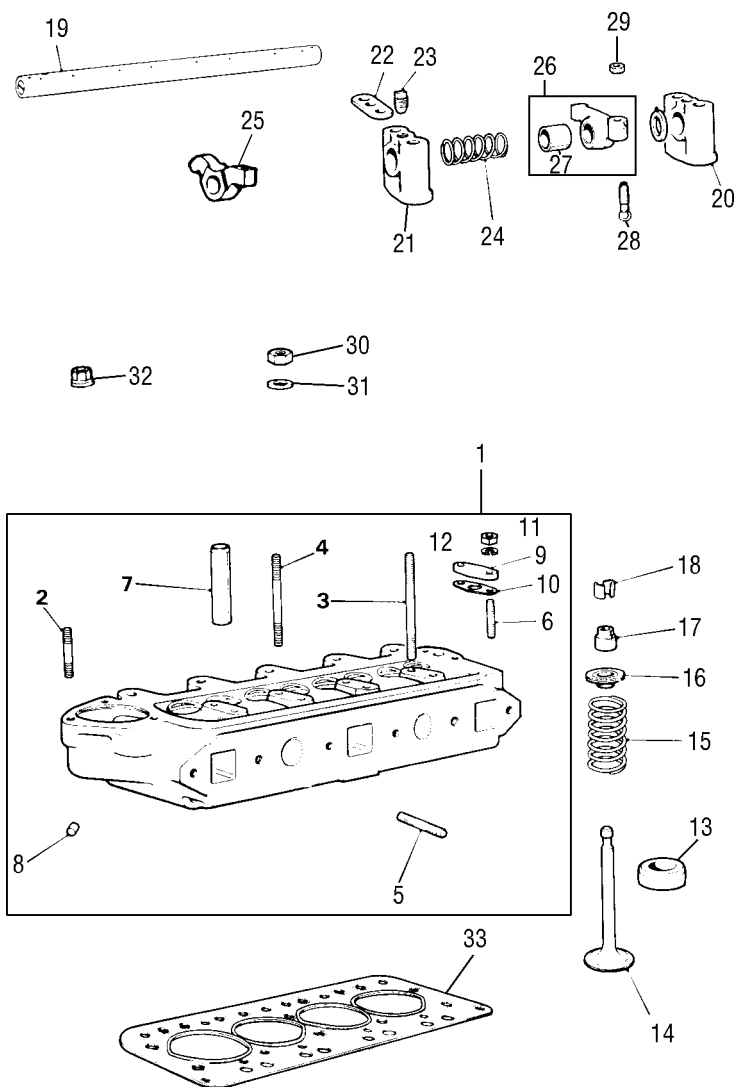
CYLINDER HEADS 997cc AND 998cc COOPER



997CC AND 998CC COOPER CYLINDER HEAD

NO.	PART NO.	DESCRIPTION	QTY	REMARKS
1	28G222	Casting 12G295 998cc	1	
1	28G193	Cylinder head 997cc (12G202 head casting)	1	
2	CHS2515	Stud, water elbow outlet	3	
3	51K885	Stud, rocker cover long	2	
4	51K1473	Stud, rocker cover short	2	
5	53K487	Stud, manifold	6	
6	53K402	Stud, heater valve	2	
7	12G1111	Valve guide	8	
8	6K808	Oil hole plug	1	
9	2A180	Heater tap blanking plate	1	If required
10	88G221	Heater take-off gasket	1	
	GHF200	Heater valve nut	2	
	LWZ304	Washer	2	
11	TAM2068	Valve seat insert exhaust	4	lead free
11	TAM2152	Valve seat insert inlet	4	
12	AEA574	Inlet valve	1.15" 4	997cc, was AEA399
12	12G296	Inlet valve	1.215" 4	998cc
12	AEA400	Exhaust valve (can use AEA434)	1.005" 4	
13	AEA311	Valve spring outer	8	
13	AEA401	Valve spring inner	8	998cc only
14	2A879	Valve oil seal	8	
15	88G616	Top cap	8	
	AEA403	Bottom spring collar	8	998cc only
16	2A11	Valve cotter	8 pr	NLA
17	2A12	Circlip	8	No longer required
18	12A1950	Rocker shaft	1	
20	12G1926	Rocker shaft post with oil feed	3	
19	12G1927	Rocker shaft post - tapped	1	
21	2A515	Rocker post locking plate	1	
22	2A258	Locating plate plug	1	
23	6K556	Rocker spacer spring	3	
24	2A964	Rocker pressed steel	8	NLA
25	12G1221	Rocker forged	8	
26	2A21	Rocker bush	8	
28	AEG167	Adjusting screw for 12G1221	8	
	12A1215	Adjusting screw for 2A964	8	NLA
29	NT605061	Adjusting screw nut for 12G1221	8	
	6K654	Adjusting screw nut for 2A964	8	
30	51K1193	Cylinder head nut	9	
31	GHF302	Cylinder head washer	9	
32	GEG302	Cylinder head gasket	1	
32	GEG302/COMP	Cylinder head gasket, Copper		
32	TAM2121	Cylinder head gasket, Copper best quality	1	

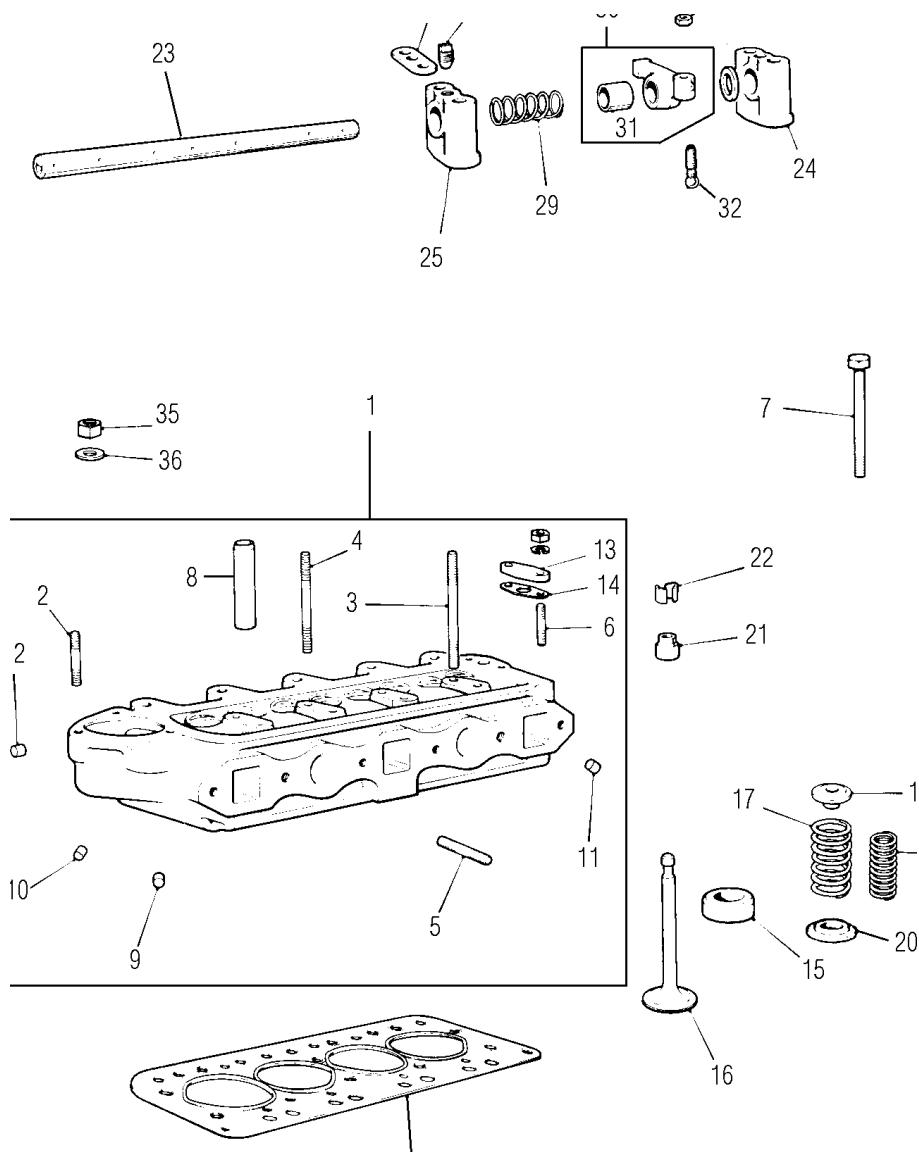
CYLINDER HEADS - 998cc, A-PLUS 1980 ON



CYLINDER HEAD, 998CC, 'A' PLUS 1980 ON

NO.	PART NO.	DESCRIPTION	QTY	REMARKS
1	CAM6517	Cylinder head	1	L. C.
1	CAM6812	Cylinder head - use TAM2168	1	H.C. Triple collet groove
1	TAM2168	Cylinder head	1	Lead free
2	CHS2515	Stud, water elbow	3	
3	51K885	Stud, rocker cover long	2	
4	51K1473	Stud, rockers short	2	
5	53K487	Stud, manifold	6	
6	53K402	Stud, heater tap valve take-off	2	
7	12G1111	Valve guide, was 2A608	8	12G1963 alternative
8	RU612123	Oil hole plug	1	
9	2A180	Blanking plate, heater take-off	1	If required
10	88G221	Gasket	1	
11	GHF200	Nut	2	
12	LWZ304	Washer for nut	2	
13	AEA762	Valve insert inlet	4	
13	TAM2152	Valve insert inlet	4	Lead free
13	AEA763	Valve insert exhaust, was 2A640	4	Use TAM2068
13	TAM2068	Valve insert exhaust	4	Lead free
14	TAM1062	Inlet valve H.C. and lead free	4	Triple collet groove
14	TAM1770	Exhaust valve H.C. and lead free	4	Triple collet groove
14	CAM6502	Inlet valve, collet groove put up .140 thou from valve tip	4	Use 12G1015 spring
14	CAM6503	Exhaust valve collet groove put up .140 thou from valve tip	4	Use 12G1015 spring
14	CAM6505	Exhaust valve collet groove put up .140 thou from valve tip	4	Lead free, chrome stem
14	CAM6391	Inlet valve, top of collet groove .220 thou from valve tip	4	Use AEA311 spring
14	12A1987	Exh valve, top of collet groove .220 thou from valve tip	4	Use AEA311 spring
15	12G1015	Valve spring for all triple collet valves	8	Plus CAM6502/3/5
15	AEA311	Valve spring	8	For 12A1987/CAM6391
16	88G617	Top cap, single groove	8	
16	AHU1897	Top cap, triple groove	8	
17	ADU4905	Valve oil seal	8	
18	88G459	Cotter	8 prs	Single groove valve
18	CAM6975	Cotter	8 prs	Triple groove valve
19	12A1950	Rocker shaft	1	
20	12G1926	Rocker shaft post with oil feed hole	3	
21	12G1927	Rocker shaft post tapped	1	
22	2A515	Rocker shaft post locking plate	1	NLA use 2A259
23	2A258	Locating plate plug	1	
24	6K556	Rocker spacer spring	3	
25	CAM289	Rocker sintered	8	
26	12G1221	Rocker forged	8	Alternative in sets
27	2A21	Rocker bush	8	Not fitted to CAM289
28	AEG167	Adjusting screw	8	
29	NT605061	Adjusting nut	8	
30	51K1193	Cylinder head nut, until CAM4545	9	
31	GHF302	Washer, until CAM4545 fitted	9	
32	CAM4545	Head nut with built in washer	9	
33	GUG2506HG	Cylinder head gasket, was TAM2121B and AJM302	1	

CYLINDER HEADS COOPER S 970cc, 1071cc & 1275cc



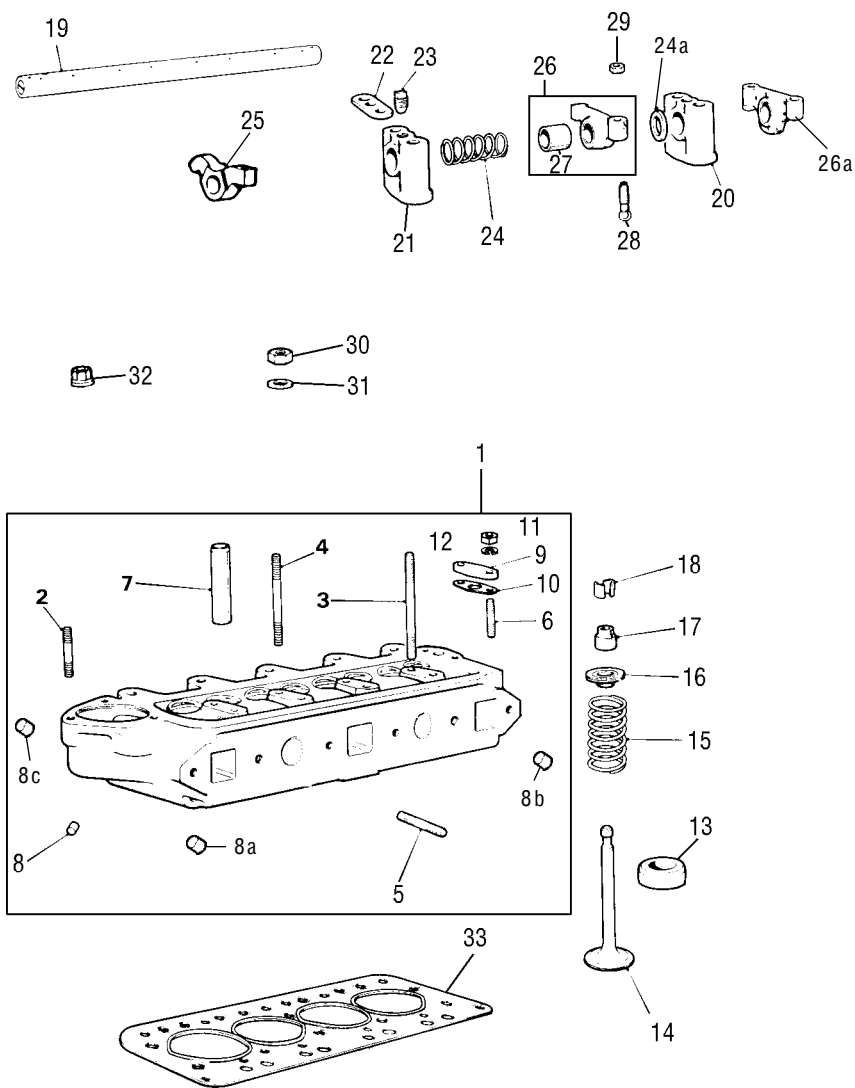
CYLINDER HEAD COOPER 'S' 970CC, 1071CC AND 1275CC

NO.	PART NO.	DESCRIPTION	QTY	REMARKS
1	12G1805	Cylinder head (12G940) casting	1	35mm inlet/29mm exh
1	38G360	Cylinder head (AEG163) casting, C.W.E.	1	35mm inlet/31mm exh
2	CHS2515	Stud, water elbow outlet	3	
3	51K885	Stud, rocker cover long	2	
4	51K1473	Stud, rocker cover short	2	
5	53K487	Stud, manifold	6	
6	53K402	Stud, heater tap	2	
7	AEG248	Extra cylinder head bolt	1	
8	12G1963	Valve guide, tapered nose	8	
8	C-AJJ4037	Bronze hidural valve guide	8	
8	12G1111	Steel valve guide	8	
9	2K1345	Oil hole plug	1	
10	12G2092	Water hole plug	3	
11	AEA771	Water and dowel hole plug	2	
12	12G3503	Cleaning hole plug	2	Was 12H1734
13	2A180	Heater take-off blanking plate	1	When required
14	88G221	Heater tap gasket	1	
15	12G1089	Inlet valve insert	4	
15	12G2675	Exhaust valve insert	4	
16	AEG593	Inlet valve nimonic EN214N material.....1.4" Short	4	AEG163 casting only
16	AEG592	Inlet valve.....1.4" Long	4	12G940 casting only
16	AEG594	Exhaust valve 31mm diameter EN214N.....1.21" Short	4	AEG163 casting
16	12G1322	Exhaust valve 29mm diameter.....1.15" Long	4	12G940 casting
17	AEA767	Outer valve spring	8	Available as spring
18	12G1137	Inner valve spring	8	set C-AEA525
19	88G617	Top cap	8	

2



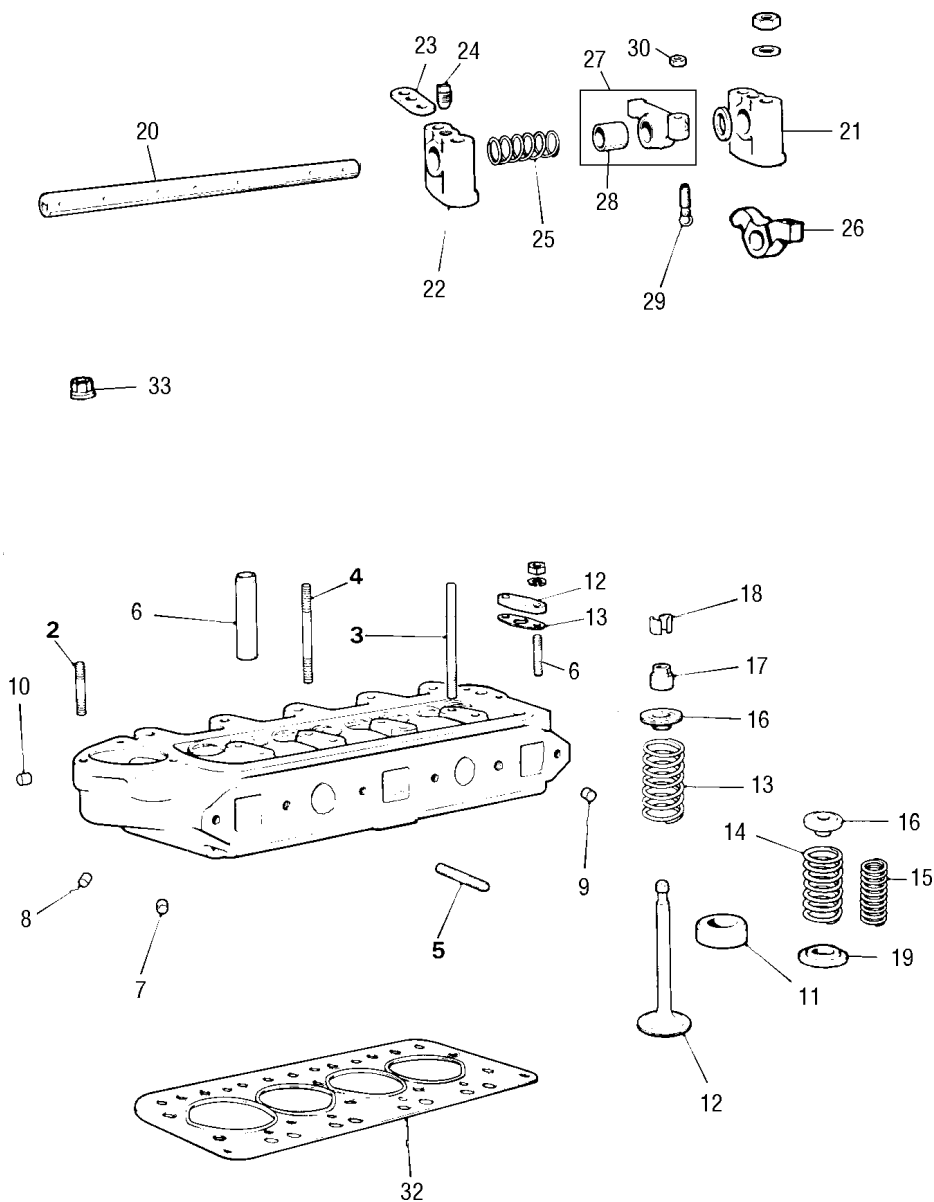
CYLINDER HEADS 1275 EXCEPT COOPER S AND TURBO



1275 EXCEPT COOPER 'S' AND TURBO

NO.	PART NO.	DESCRIPTION	QTY	REMARKS
1	38G399	Cylinder head	1	
1	LDF10213	Cylinder head	1	Lead free
2	CHS2515	Stud, for thermostat housing	3	
3	51K885	Stud, rocker cover long	2	
4	CHS522	Stud, rocker post short	2	
5	53K487	Stud, manifold	6	
6	53K402	Stud, heater valve take-off	2	
7	12G1111	Valve guide	8	
8	2K1345	Oil hole plug	1	
8a	12G2092	Water hole plug	3	
8b	AEA771	Water and dowel hole plug	2	
8c	12G3503	Cleaning hole plug	2	Was 12H1734
9	2A180	Heater tap blanking plate	1	
10	88G221	Heater take-off gasket	1	
13	12G1089	Valve seat insert inlet	4	Not lead free
13	TAM2069	Valve seat insert exhaust	4	Lead free only
13	12G2675	Valve seat insert exhaust	4	
14	12G941	Inlet valve	1.3" Long	4 33mm diameter
14	TAM1058	Inlet valve, triple collet groove	1.4" Long	4 Lead free 33mm
14	12G1322	Exhaust valve	1.15" Long	4
14	TAM1061	Exhaust valve, triple collet groove	1.15" Long	4 Lead free
15	12G1015	Valve spring	8	
16	88G617	Top cap	8	
16	AHU1897	Top cap	8	Triple collet groove
17	AEG327	Valve seal (inlets)	4	Exhaust optional
17	ADU4905	Valve seal	8	'A' Plus
18	88G459	Valve cotter	8 prs	
18	AHU1897	Valve cotter	8 prs	For triple groove valves
19	12A1950	Rocker shaft	1	
20	12G1926	Rocker shaft post with oil feed hole	3	
21	12G1927	Rocker shaft post tapped	1	
22	2A515	Rocker post locking plate	1	NLA use 2A259
23	2A258	Locating plate plug	1	
24	6K556	Rocker spacer spring	3	
25	CAM289	Rocker sintered (no bush) 1/2" AF spanner size nut	8	
26	12G1221	Rocker forged	8	Alternative
26a	12G1313	Rocker pressed steel, NLA, 7/16" AF spanner size nut	8	Use CAM289/12G1221 sets
27	2A21	Rocker bush	8	Not CAM289
27a	AEG168	Spacing washer	A/R	
28	AEG167	Rocker screw, uses NT605061	8	Except 12G1313
29	NT605061	Rocker screw nut, 1/2" AF spanner size nut	8	Except 12G1313
30	51K1193	Head nut	9	
31	GHF302	Head washer was PWN106	9	
32	CAM4545	Head nut with shoulder	9	Alternative to 33/34
33	GEG300	Head gasket	1	Copper head gasket
33	GUG2507HG	Head gasket, was TAM1521	1	Current production

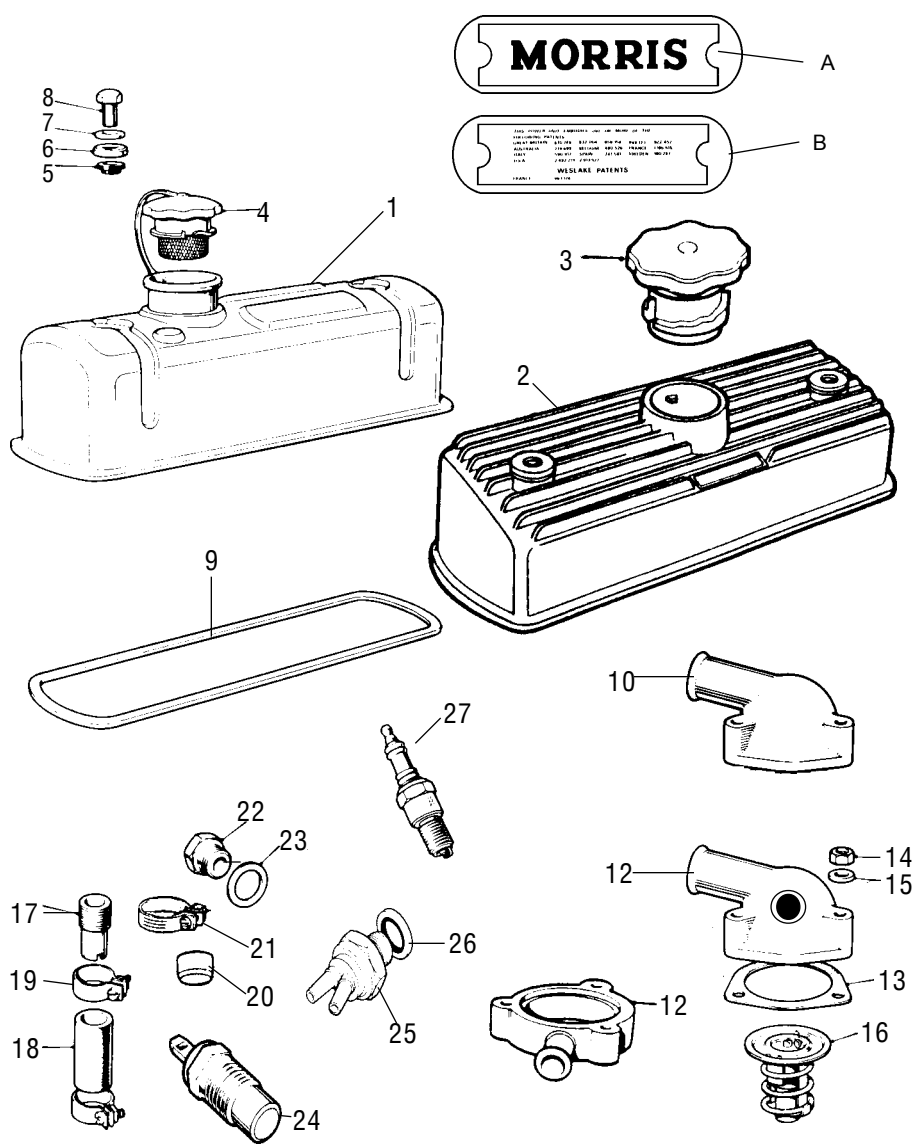
CYLINDER HEADS 1275CC TURBO



CYLINDER HEAD 1275 TURBO AND HEADS WITH TRIPLE COLLETT GROOVE VALVES

NO.	PART NO.	DESCRIPTION	QTY	REMARKS
1	CAM6979	Cylinder head	1	Turbo
1	TAM2153	Cylinder head 33mm inlet 29mm exhaust	1	Unleaded
1	CAM6633	Cylinder head 35mm inlet 29mm exhaust	1	MG Metro
2	CHS2515	Stud, water elbow	3	
3	51K885	Stud, rocker cover long	2	
4	CHS522	Stud, rocker short	2	
5	53K487	Stud, manifold	6	
5	TE605131	Manifold stud	6	Turbo
6	12G1111	Valve guide inlet	8	(4 for Turbo)
6	CAM6980	Valve guide, exhaust	4	Turbo only
7	CDU2601	Rivet - oil hole	1	
8	12G2092	Water hole plug	1	
9	AEA771	Water and dowel hole plug	1	
10	12G3503	Plug	1	Was 12H1734
11	12G1089	Valve seat insert, inlet	4	
11	TAM2069	Valve seat insert, exhaust	4	Lead free
11	12G2675	Valve seat insert, exhaust	4	
12	TAM1058	Inlet valve 33mm diameter	4	Lead free
12	TAM1330	Inlet valve 33mm diameter	4	Turbo
12	TAM1059	Inlet valve 35mm diameter	4	MG Metro
12	TAM1061	Exhaust valve 29mm diameter	4	
12	AHU1976	Exhaust valve 29mm diameter	4	Turbo
13	12G1015	Valve spring	8	Except Turbo
14	AEA767	Valve spring outer	8	Turbo only
15	12G1137	Valve spring inner	8	Turbo only
16	AHU1897	Top cap	8	Except Turbo exhaust
16	CAM6582	Top cap	4	Turbo exhaust only
17	ADU4905	Valve seal (with spring)	8	
18	CAM6975	Valve cotter	8 prs	Except Turbo exhaust
18	CAM6573	Valve cotter	4 prs	Turbo exhaust only
19	AEA403	Valve spring bottom collar	8	When 12G1137 fitted
20	12A1950	Rocker shaft	1	
21	12G1926	Rocker shaft post with oil feed	3	
22	12G1927	Rocker shaft post tapped	1	
23	2A515	Rocker post locking plate	1	NLA, Use 2A259
24	2A258	Locating plug	1	
25	6K556	Rocker spacer spring	3	
26	CAM289	Rocker (sintered)	8	Fit as sets only
27	12G1221	Rocker forged	8	As sets only
28	2A21	Rocker bush	8	Except CAM289
29	AEG167	Rocker adjuster screw	8	
30	NT605061	Rocker screw nut	8	
31	AEG168	Rocker spacer washer	A/R	As required
32	GUG2507HG	Head gasket, was TAM1521	1	
33	CAM4545	Cylinder head nut	9	

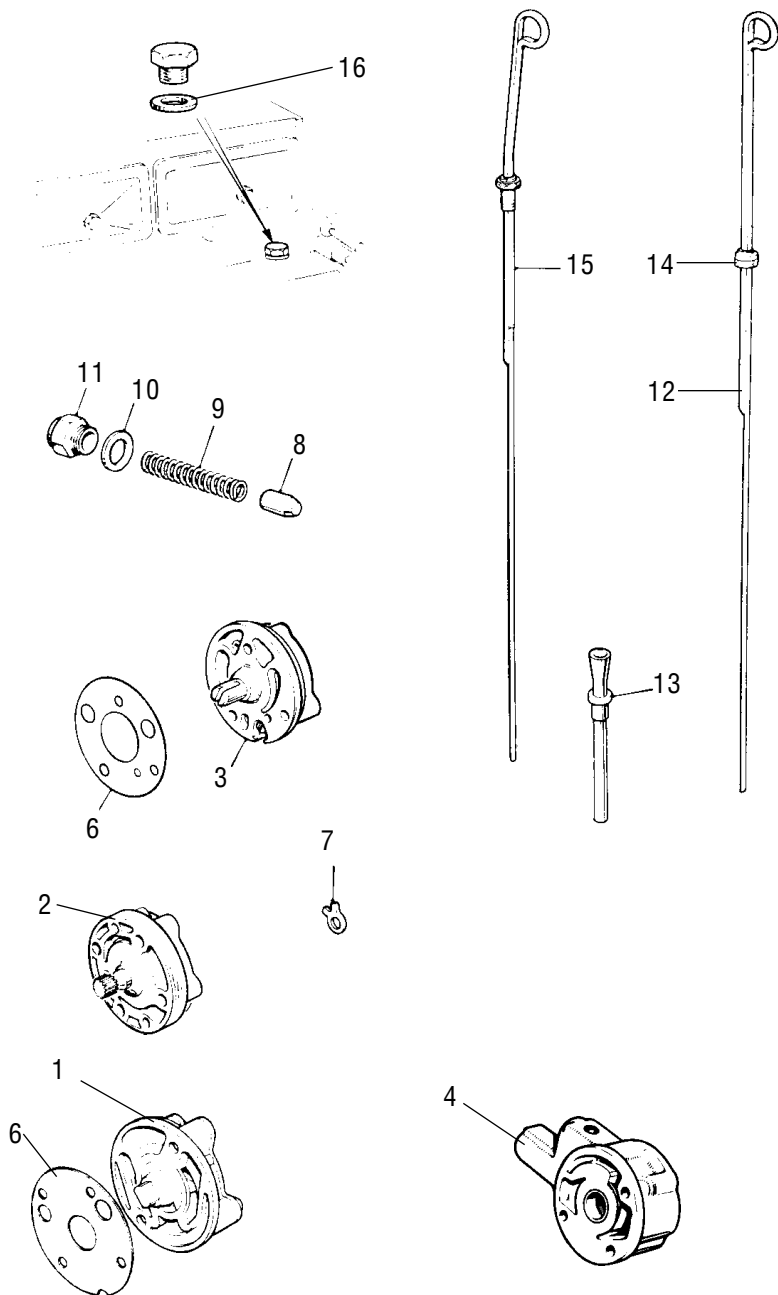
CYLINDER HEADS ENGINE COMPONENTS



ENGINE COMPONENTS CYLINDER HEAD

NO.	PART NO.	DESCRIPTION	QTY	REMARKS
A	Decal09	"Morris" valve cover plate	1	
	Decal01	"Austin" valve cover plate	1	
	ST136	"Austin" valve cover sticker	1	
B	Decal15	Valve cover patent plate	1	
1	12A1530	Rocker cover, closed circuit breather	1	Not 11 stud heads ('S')
1	LDR10074	Rocker cover	1	1985 on
2	CAM6822	Alloy rocker cover	1	MG Metro/Turbo
	FP26	Flat ribbed top alloy rocker cover	1	
2	CAM6822	Slanted top "Minifin" alloy rocker cover	1	
3	GFE6004	Rocker cap (Red)	1	Use on CAM6822
4	GFE6003	Rocker cap with strap	1	Closed breathing type
4	13H2296	Rocker cap, without strap	1	Closed breathing type
4	12A402	Rocker cap, non breather type	1	early non breather type
5	12A1358	Rubber bush	2	
6	1A2156	Seal cup washer	2	
6	WB6	Seal cup washer polyurethane (pair)	1	aftermarket
7	1B2925	Distance piece	2	
8	2A150	Nut cap	2	
6	1A2156/C	Washer chrome	2	Also as kit SAC71L only
7	1B2925/C	Spacer chrome	2	Also as kit SAC71L only
8	CAM6823	Nut cap chrome	2	Also as kit SAC71L only
6-8	SAC71L	Rocker cover hardware kit chrome	1	Aftermarket
9	GEG401	Rocker cover gasket	1	Except 'S'
9	GEG417	Rocker cover gasket	1	All 'S' (11 stud head)
10	12G103	Thermostat housing	1	Plus T.B.I.
11	12A408	Tapped thermostat housing	1	
11	PEQ10019	Tapped thermostat housing, Cooper 1300cc HIF44	1	With catalyst
11	PEQ10010	Tapped thermostat housing, HIF38 (12AG03/4 engine)	1	For MAQ10002 switch
12	PEM10036	Sandwich plate, with radiator fixing lug (HIF44 Cooper)	1	With catalyst 1300cc
12	PEG10002	Sandwich plate, with radiator fixing lug	1	For PEQ10010 housing
13	GTG101	Thermostat gasket	A/R	
16	GTS102	Thermostat 74□ (165F)	1	
16	GTS104	Thermostat 82□ (180F)	1	
16	GTS108	Thermostat 88□ (190F)	1	1975 on
17	2A243	Cylinder head by pass adaptor short	1	NLA use 12A2075
17	12A2075	Cylinder head by pass adaptor long	1	
18	12A1093MS	By pass hose fluted	1	
18	AEG484	By pass hose straight	1	
19	3H2963	Hose clip	2	
20	CAM4126	Blanking plug for by pass hose	1	When required
21	GHC507	Clip for CAM4126, (alternative clip 3H2963)	1	When required
22	ADP210	Plug, for thermal transmitter hole, cyl/head or 12A408	1	
22	11k2046	Adapter, use with mechanical temp gauge	1	
23	1B3664	Washer for ADP210	1	
24	GTR101MS	Temperature transmitter, alternative to GTR143/GTR102	1	
24	GTR104	Temperature transmitter, Cooper 'S' to 1971	1	
24	GTR143	Temperature transmitter, Cooper 1989 on	1	
24	GTR185	Temperature transmitter, fuel injected TBI 10/91 on	1	
25	MAQ10002	Switch in thermostat housing for direct feed from vac unit	1	12A G03/4 Engine
26	MAW10001	Seal for vacuum switch	1	
27	BP6ES -NGK	Spark plug	1	

OIL PUMP / PRESSURE VALVE AND DIPSTICKS

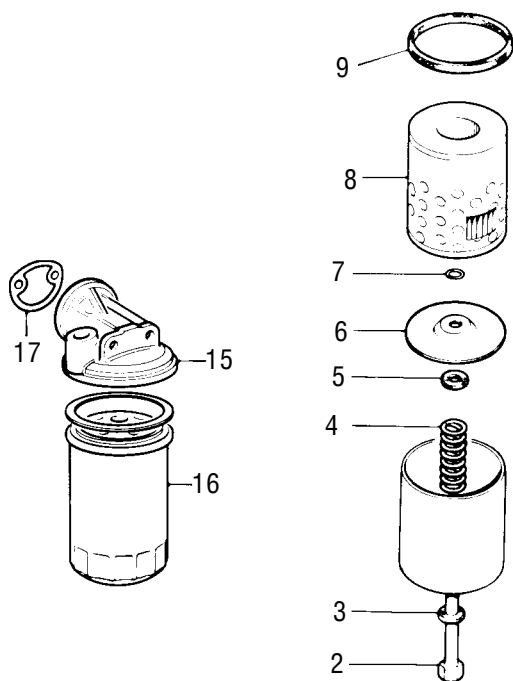
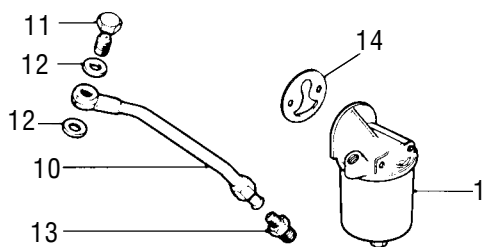


OIL PUMP / PRESSURE VALVE, DIPSTICKS

NO.	PART NO.	DESCRIPTION	QTY	REMARKS
1	CAM86614	Oil pump slot drive turbo	1	MG Turbo
1	CAM6614MS	Oil pump slot drive turbo	1	Aftermarket
1	AHU1048	Oil pump slot drive	1	A-Plus 1300cc
1	C-AEG412	Sureflow slot drive	1	A-Plus 1300cc
1	GLP139	Oil pump slot drive small bore	1	A-Plus except 1300cc
1	C-AEG413	Sureflow slot drive small bore	1	A-Plus 998cc
2	CHM140	Oil pump star drive (2 bolt fitting) 1275cc	1	Hoburn Eaton
2	C-AEG411	Sureflow oil pump star drive 4 bolt fitting 1275cc	1	
3	12G793	Oil pump pin drive, 850/998/1000cc	1	
3	C-AEG414	Sureflow pin drive except 1275cc and 'S'	1	
3	C-AEG410	Sureflow oil pump pin drive was AEG410	1	
4	GLP107	Automatic oil pump was 12G796	1	Pre 'A' plus
4	GLP113	Automatic oil pump was 12A1979	1	'A' plus
6	12G730B	Oil pump gasket	1	Was 88G411
6B	12G1127	Oip pump spacer. Use to convert auto block		
7	12G926	Locktab for pin drive pumps	1	
7	12G2097	Locktab for spider type pump (Long)	1	Concentric type only
7	12G2098	Locktab for spider type pump (Short)	1	Concentric type only
8	12H865	Valve oil release	1	
	BLS916	Ball bearing, use with AEA536	1	Alternative to valve
9	6K653	Oil valve spring	1	60lb
9	AEA536	Oil valve spring	1	65lb
10	6K431	Copper washer	1	
11	12A1851	Nut cap	1	
12	12A116	Dipstick (also use when 12G107 is fitted)	1	850cc with no tube
13	12G107	Dipstick tube, nylon (use 12A116 with nylon tube)	1	CWE
14	AEC671	Dipstick seal for 12A116	1	
15	12A263	Dipstick	1	1275 & A-Plus
13	12A1261	Dipstick tube, metal (use LQM100380 with metal tube)	1	NLA
13	12g107	Dipstick tube, nylon	1	
16	6K464	Washer for oil priming hole	1	When applicable
17	2A797	Oil pressure relief seating in block	1	

P.S. Pin drive pumps fitted to early Minis and 'S' had the same internals, the shaft on the 'S' was longer to accommodate the block. Sureflow pumps do not give higher oil pressure, but maintain constant pressure under arduous use, such as race or rallying. Their internals are machined to finer tolerances and port design prevents drain off of oil back into the sump.

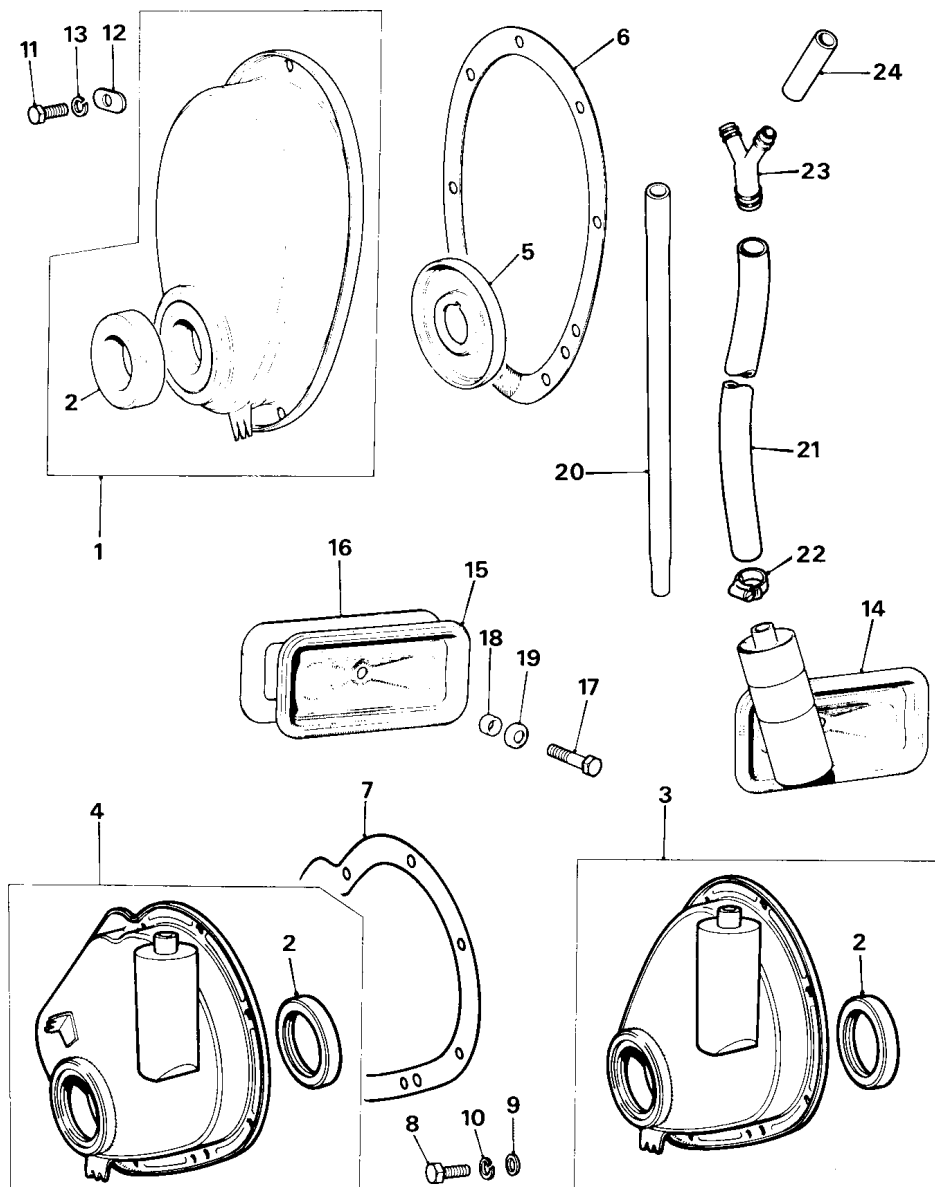
OIL FILTERS & COMPENENTS



OIL FILTER COMPONENTS

NO.	PART NO.	DESCRIPTION	QTY	REMARKS
1	12A1726	Oil filter assembly durolator	1	NLA
2	37H689	Center bolt	1	NLA
3	17H2281	Seal	1	NLA
3	508380	Seal was 17H1173	1	Die-cast housing
4	500319	Spring was 7H25	1	NLA
5	7H28	Rubber seal	1	NLA
6	17H1148	Pressure plate	1	NLA
7	27H2573	Circlip - center bolt	1	NLA
8	GFE103	Filter element with seal	1	Only with GFE103
8	GFE104	Filter element with seal	1	Automatic
9	12A1591	Housing to filter head seal	1	
10	88G538	Block to filter pipe	1	CWE Pre spin on
10	TAM2106	Block to filter pipe spin on	1	Use TAM2119
10	LQP10033	Block to filter pipe	1	12A Engine 1992 on
	LQP10033	requires two of LZB10017 seal / LYH10014 union		
11	2A715	Banjo bolt	1	
12	AED172	Copper washer	2	
12	LYF10017	Metal washer with internal seal (alternative to AED172)	2	
13	TAM2119	Connector was TCZ106	1	
14	88G402	Filter to block gasket, paper element type	1	
15	TAM2097	Spin on filter head	1	
15	LPX10026	Spin on filter head	1	12A Engine 1992 on
16	GFE148	Oil filter with seal, was GFE149	1	
16	GFE1	Superflow filter, micro fine element	1	Magnetic filter in base
16	GFE170	Spin on oil filter with seal Turbo	1	
16	GFE166	Spin on filter	1	12A Engine 1990 on
17	12A2035	Gasket, for spin on filter	1	

TIMING COVER AND TAPPET INSPECTION COVERS



TIMING COVER AND TAPPET INSPECTION COVER

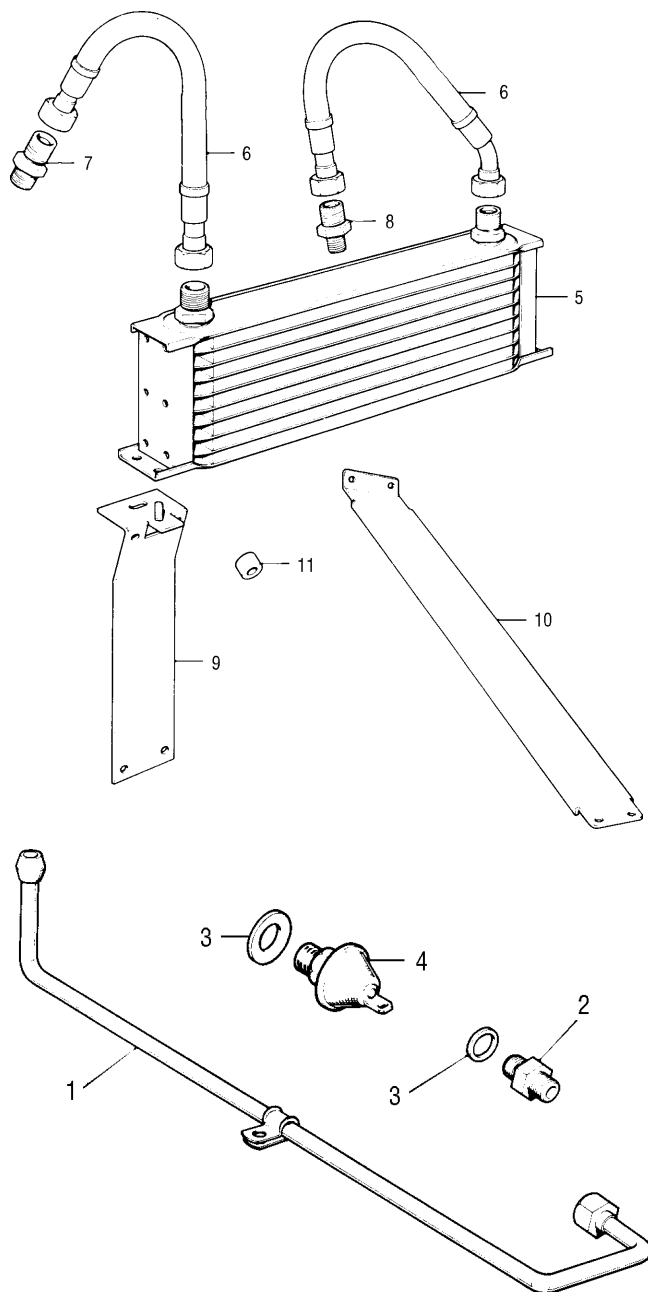
NO.	PART NO.	DESCRIPTION	QTY	REMARKS
1	12G2506	Timing cover	1	Pre pad type tensioner
1	CAM4640	Timing cover	1	Pad type tensioner
1	CAM4904	Timing cover	1	'A' Plus
2	88G561	Oil seal	1	
2	LUF1006	Oil seal for LJR10168 cover	1	
3	12G2507	Timing cover with breather	1	Duplex type
4	12G2623	Timing cover with breather	1	Simplex with pad tensioner
4	CAM4868	Timing cover with breather	1	A-Plus
4	LJR10168	Timing cover with breather on following engines 1990 on	1	F75/76/77, G03/4/5
5	12A1148	Oil thrower	1	
6	12A956	Gasket, early type	1	Pre pad type tensioner
7	12G2625	Gasket, tensioner type, with bulge	1	
8	SH604031	Screw, cover to front plate	6	
9	GHF300	Washer	6	Was 12G1075
10	GHF331	Spring washer	6	
11	GHF120	Screw, cover to block	4/5	Increase with Simplex
12	GHF301	Washer	4/5	
13	GHF332	Spring washer	4/5	
14	12A1212	Tappet chest cover with breather	1	Use 12A1175 gasket
15	12A1386	Tappet chest cover plain	1	Use 12A1175 gasket
16	12A1139	Cork gasket	2	Pre 12A1175
16	12A1175	Rubber gasket, introduced in 1966	2	
17	BH605101	Tappet chest bolt	2	Rubber gasket type only
18	12A1176	Tappet cover seal	2	Rubber gasket type only
18	MRC1980A	Bush, replaces 12A1176/7	2	1985 on
19	12A1177	Washer cup for bush on 12A1176 only	2	Rubber gasket type only
20	12A1735	Breather hose single carburettor	1	
21	BAU5065M	Breather hose twin carburettor	A/R	Was 37H7085M
22	GHC507	Hose clip, alternative clip 3H2963	2	
23	12G2134	'Y' piece plastic twin carburettor	1	
24	LLH10056	Hose, 'Y' piece to carburettor	1	

2

Gasket sets

NO.	PART NO.	DESCRIPTION	QTY	REMARKS
	GEG101	Head gasket set, small bore	1	
	GEG101/C	Head gasket set, small bore, copper gasket	1	
	AJM125OMS	Head gasket set, small bore, includes A-Plus	1	
	GEG1140	Head gasket set, 1275	1	
	GEG1140/C	Head gasket set, Copper head gasket	1	
	GEG202	Engine gasket set	1	
	GEG206	Engine gasket set, 1300 only	1	no tappet chest gaskets
	AJM276	Engine gasket set, A-Plus	1	
	GEG502	Transmission to engine gaskets	1	

OIL COOLERS / OIL GAUGE PIPES AND OIL SWITCHES



OIL COOLERS / OIL GAUGE PIPES AND OIL SWITCHES

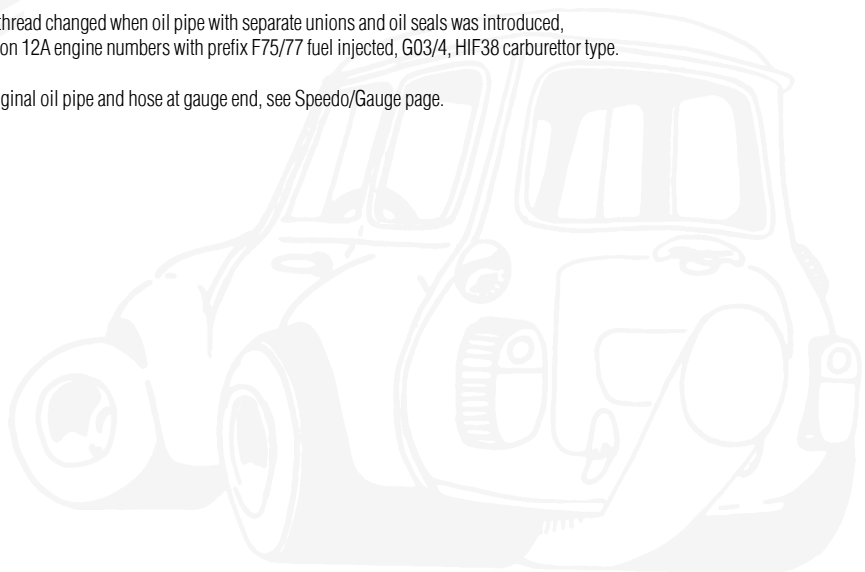
NO.	PART NO.	DESCRIPTION	QTY	REMARKS
1	CAM4202	Oil gauge pipe, block to hose	1	
	A-PL04	One piece nylon oil pipe 5ft long	1	
2	2A269	Block union	1	
	TP	'T' piece to replace 2A269 for pressure switch and oil pipe	1	
3	6K464	Fibre washer, alternative to 2K4956	1	When required
4	GPS133	Oil pressure switch tapered, does not require washer	1	
4	C-GPS101	Oil pressure switch, adjustable 15-50 psi	1	
4	HPS1	Oil pressure switch (operates at 22lb pressure)	1	Performance part
5	C-ARH221	13 row oil cooler	1	'S'
5	C-ARO9809	16 row oil cooler	1	
6	MOC1013	Complete oil cooler pipe kit with built in unions	1	Mini
6	MOC100102	Complete oil cooler pipe kit with built in unions	1	Clubman
6	C-AHT4	Competition braided hose kit with built in unions	1	Mini
6	C-AHT3	Competition braided hose kit with built in unions	1	Clubman
6	MOC1014	Complete oil cooler pipe kit with built in unions	1	12A engines 1992 on
7	21A1780	Original union for block, not required for hose kit	1	
8	AHA6423	Original union for filter, not required for hose kit	1	
9	21A1794	Original oil cooler brackets	2	
10	24A1918	Front panel reinforcement strip when cooler fitted	1	
11	24A1152	Grille distance pieces	12	NLA

STANDARD FITMENT TO 1992, PRE FUEL INJECTED MINI (NOT LATER TYPE ENGINE BLOCK)

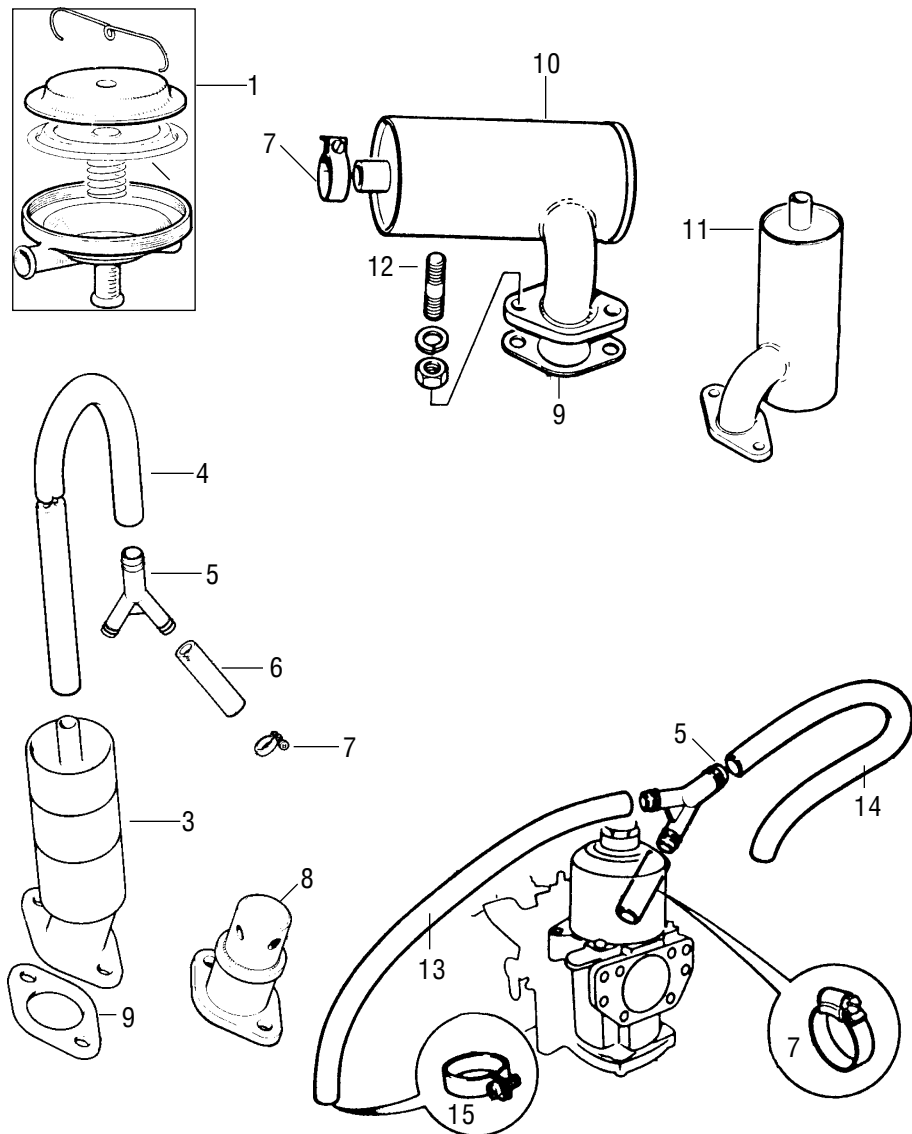
5	PBC10057	8 row oil cooler	1	NLA
6	PBP10019	Pipe cooler to filter	1	NLA Use MOC013
6	PBP10020	Cooler to block	1	NLA Use MOC013

Block thread changed when oil pipe with separate unions and oil seals was introduced, this is on 12A engine numbers with prefix F75/77 fuel injected, G03/4, HIF38 carburettor type.

For original oil pipe and hose at gauge end, see Speedo/Gauge page.



CLOSED CIRCUIT BREATHING COMPONENTS



CLOSED CIRCUIT BREATHING COMPONENTS AND ANTI RUN ON VALVE

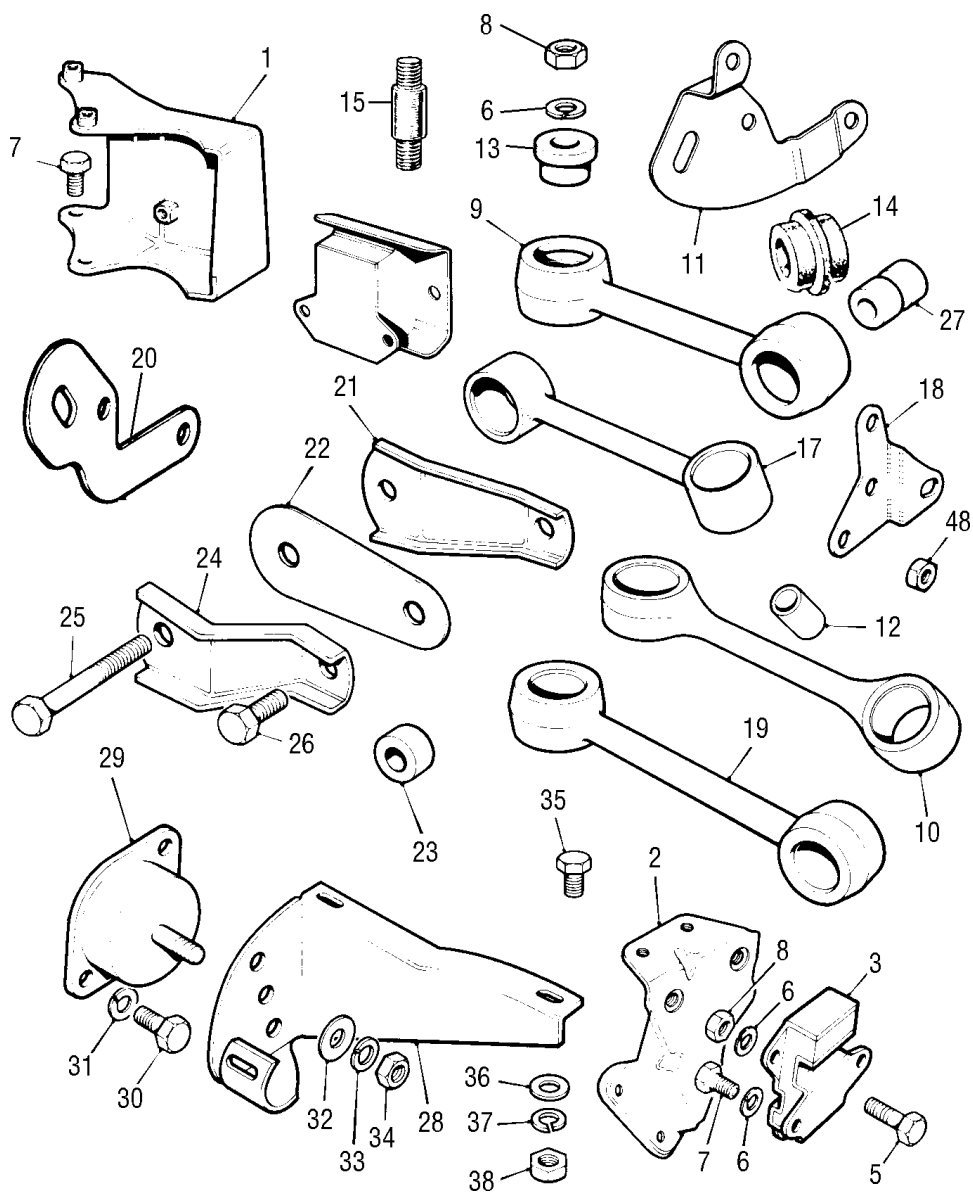
NO.	PART NO.	DESCRIPTION	QTY	REMARKS
1	13H5191	Emmission control valve, twin carburettors	1	NLA
2	27H7758	Diaphragm rubber for 13H5191	1	
3	12G2619	Breather oil separator on clutch case	1	
4	BAU5065M	Breather hose per metre	1	
5	12G2134	'Y' piece to oil separator, when required	1	
6	LLH10056	Hose 'Y' piece to carburettor	1	
7	GHC405	Clip, alternative clip ACH5854	A/R	
8	12G1938	Plastic breather on clutch case	1	NLA
9	GUG2511HG	Gasket for all breather/oil separators, was LVL10001	1	
10	LLC10047	Oil separator on clutch case (to clear servo)	1	1989 on
11	LLC10051	Oil separator on clutch case (automatic)	1	Alternative
12	SH505061	Stud for oil separators (now a bolt)	2	
13	12A1735	Breather hose (different size ends)	1	
14	LLH10112	Breather hose	1	Alternative to BAU5065M
15	GHC507	Clip, hose to carburettor, alternative clip 3H2963	A/R	
	MAV10021	Anti run on valve (HIF44 carb vehicles)	1	Cooper and SE

2

MANUAL POWER UNIT GASKET SETS (quick reference guide)



ENGINE MOUNTINGS AND BRACKETS



ENGINE MOUNTINGS AND BRACKETS

NO.	PART NO.	DESCRIPTION	QTY	REMARKS
1	12A361	Engine mounting bracket L/H	1	Manual
2	22A30	Engine mounting bracket up to 12A361	1	Manual except Cooper
2	22A1274	Engine mounting bracket L/H	1	Automatic
3	21A1902	Engine mounting	2	Not automatic
3	21A1902ST	Engine mounting with captive nuts	2	
4	22A1018	Engine mounting L/H	1	Automatic only
4	22A917	Engine mounting R/H	1	Automatic only
5	SH605051	Bolt for engine mount to radiator bracket	3	
5	GHF163	UNC thread bolt, mount to clutch case	3	
6	GHF332	Spring washer	A/R	
7	GHF120	Engine mounting to subframe bolt	4	2 per mounting
8	GHF201	Nut for mounting to subframe bolt	4	Not required on 21A1902ST
9	21A1109	Engine to bulkhead upper steady bar	1	
9	ERA1020	Adjustable upper engine steady bar	1	Turbo
9	21A1817	Longer upper engine steady bar, 1300cc 1990 on	1	All automatics
10	21A2569	R/H Steady bar lower, part of kit MSSK	1	Gearbox to rear
11	C-STR401	Bracket for 21A2569 to gearbox, part of kit MSSK	1	Was 21A2763
12	31G1085	Distance piece tube for CRC5329 (on lower brackets)	2	One each end
13	CRC5329	Rubber bush	4	2 Each end
14	2A5872	One piece rubber bush up to 1962	1	Engine end only
15	2A5873	Shouldered stud for master cylinder end	1	
16	BH605151	Bulk head mounting bolt (alternative 2A5873)	1	Use with 21A1108 spacer
17	21A2787	L/H steady rod lower, part of kit MSSK1	1	
18	21A2785	Bracket for 21A2787 to gearbox, part of kit MSSK1	1	Gearbox to rear
19	FAM2758	R/H steady rod lower to front	1	Late type subframe
20	NAM3760	Bracket for FAM2758 to gearbox	1	with bracket for rod
19	KKH10013	R/H steady rod lower to front (.50" shorter than FAM2758)	1	1300cc 1990 on
20	KKU10080	Bracket for KKH10013 rod (heavy duty NAM3760)	1	1300cc 1990 on
21	2A5869	Bracket for engine steady rod	1	Up to 1970
22	21A1107	Plate against engine block	1	Deleted for 21A2387
23	21A1106	Spacer	1	Deleted for 21A2387
24	21A2387	Bracket for engine steady rod 1971 on	1	After 21A1107 deleted
25	BH605151	Long bolt for 21A1109 to engine	1	
26	GHF120	Short bolt when 21A1106 spacer fitted	1	
26	SH605151	Short bolt when 21A1106/7 spacers deleted	1	For 21A2387
27	21A1108	Spacer for CRC5329 bushes (upper bar)	2	
	SC2	2 Plastic cone inserts to replace 21A1108	1 pr	Alternative
28	21A745	Remote control rear bracket	1	
29	21A956	Remote control rear mounting	1	
30	GHF163	Bolt for mounting to housing	2	
31	GHF302	Washer for mounting to bracket	2	
32	GHF302	Plain washer	1	
33	GHF333	Spring washer	1	
34	GHF202	Nut	1	
35	GHF120	Bracket to body bolt	3	
36	GHF301	Bracket to body bolt plain washer	3	
37	GHF332	Spring washer	3	
38	GHF322	Nut	3	
	MSSK	R/H lower steady bar kit, gearbox back to subframe	1	
	MSSK1	L/H lower steady bar kit, gearbox back to subframe	1	