

Stainless Steel Skid Plate

Installation Instructions

MINI Hardtop Coupe 2007-on

Tools required: 16MM socket and ratchet (impact air wrench recommended), small flathead screwdriver, torque wrench.

Removal and installation of these components will require the vehicle to be elevated and supported on jackstands.

DO NOT ATTEMPT TO WORK UNDER YOUR MINI USING THE FACTORY-SUPPLIED JACK, SERIOUS INJURY OR DEATH CAN RESULT!

1. Use a small flathead screwdriver to remove the passenger side clip nut. If there is a plastic trim panel attached at the clip nut's location remove it as well.



3. Using a 16mm socket and a large wratchet wrench (impact air wrench recommended for this step), remove the four bumper-support-to-frame thru bolts. They are large long bolts. Remove them one at a time and **do not move or lower and reraise the car with them removed.**



MINI Installation Instructions



4. Apply double-sided foam tape to the lower radiator hose at the two radiator hose clamp locations shown. Leave the foam tape backing in place on the side facing the ground. This will insulate the metal of the hose clamps from the metal of the skid plate.



5. Gather the four mounting bolts and place them close by so that they can be reached while holding the skid plate under the car. Remove the white plastic protective tape cover from the skid plate. Hold the skid plate with the rounded edge toward the front of the car and the angled

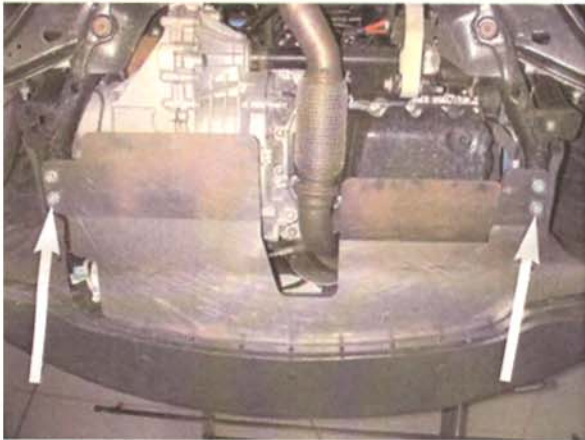
bends pointing downward toward the ground. Slide the front edge of the skid plate into the slot where the bottom of the bumper joins the lower air dam. During this step, make sure that the left and right sides of the skid plate go **between** the frame rail and the grey splash guard on each side of the car. Then slide the skid plate forward, lining up the four holes at the driver's and passenger's side of the skid plate with the four holes in the frame rail.



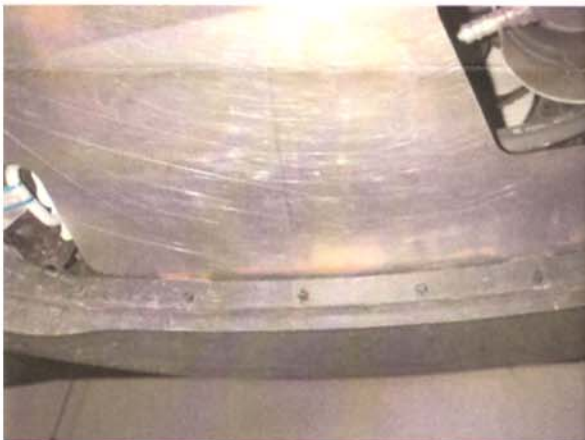
6. Hand thread a bolt thru the rearmost hole on the driver's side of the skid plate and into the frame rail. Repeat for the rearmost hole on the passenger side. Then thread the two remaining bolts thru the two forward bolt hole locations.



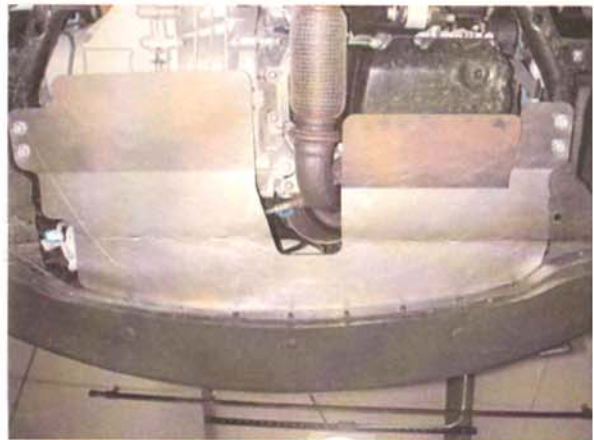
MINI Installation Instructions



7. Confirm again that the front edge of the skid plate is in place between the bumper and lower air dam and that the neither the grey left or right splash guards are pinched between the frame rail. Then snug all four bolts until the skid plate sits flat against the frame rail.



8. Torque the four bolts to 74 ft-lbs, beginning with the rear driver's side bolt, then the rear passenger's side bolt, then the front driver's side bolt and finally the front passenger's side bolt.



9. Enjoy your new Stainless Steel Skid Plate.