



2011-2016 Mini Cooper Countryman S (R60) (t) L4-1.6L

(Front Wheel Drive only)

2.5" Cat-Back Exhaust, 304SS

BH8325

Installation Instructions



NOTE: YOU WILL NEED TO CUT THE OEM EXHAUST.

Thank you for making HOOKER HEADERS your choice in a high-performance exhaust system. Extensive dyno/track testing has enabled HOOKER to offer the most advanced design in exhaust systems. The installation, while not complex, will take a certain amount of time. However, the additional horsepower and improved performance will more than justify your efforts. Proper installation and maintenance will ensure long life and maximum performance from your HOOKER HEADER exhaust system.

BEFORE STARTING:

Your vehicle must be raised a minimum of 36 inches. A floor hoist is ideal. If no hoist is available, we strongly urge the use of axle stands as a safety measure. Please read these instructions in their entirety before attempting installation.

CAUTION! WORK ONLY ON A LEVEL SURFACE. USE JACKS /JACK STANDS OF SUFFICIENT CAPACITY TO LIFT AND SUPPORT YOUR VEHICLE. NEVER WORK UNDER A VEHICLE SUPPORTED BY A FLOOR OR BUMPER JACK.

INCLUDED HARDWARE:

Qty.	P/N	Description
2	566R22	Band Clamp, 2.5" X 1.25" Wide, 430 SS
1	566R25	Band Clamp, 2.25" x 1.25" Wide, 430 SS
2	559R94	Decal - Blackheart 4" x 2"

Check the hardware package. If anything is missing, please contact Technical Service at 1-866-464-6553 or 270-781-9741.

REMOVING THE OE EXHAUST:

1. Disconnect the negative cable from the vehicle battery.
2. Lift the vehicle and secure on jack stand.
3. Removing the OE exhaust will require cutting the OE exhaust. **NOTE:** Measure twice – cut once.

4. Located the OE exhaust resonator, now measure 4 ¼" from the back of the OE resonator and make a mark. After making a mark at 4 ¼" use tape and wrap around the exhaust tube, this will help you cut a straight line when cutting (**Figures 1,2, & 3**).



Figure 1

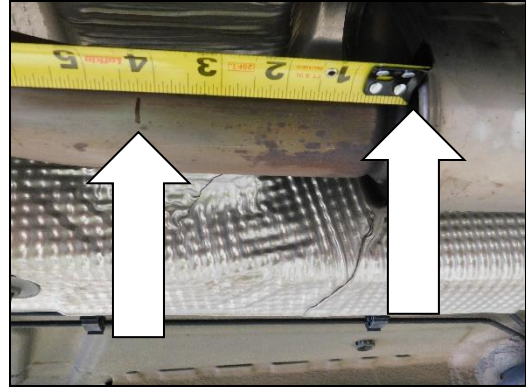


Figure 2

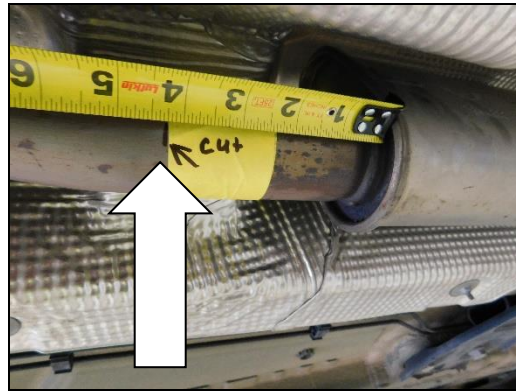


Figure 3

5. Use a reciprocating saw and cut the OE exhaust (**Figures 4 & 5**).

Figure 4



Figure 4

Figure 5

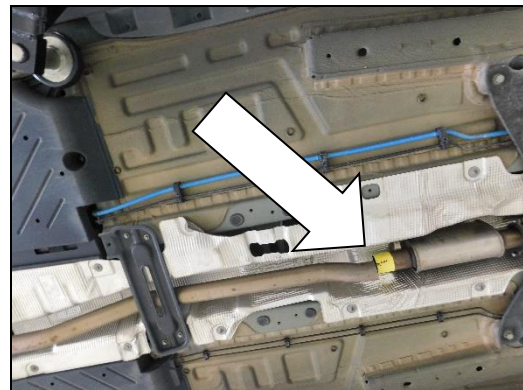


Figure 5

- Remove the (x4) bolts and remove the cross brace. Remove the (x2) hangers out of the OE rubber isolators and remove the OE exhaust from the car (**Figures 6 & 7**).



Figure 6

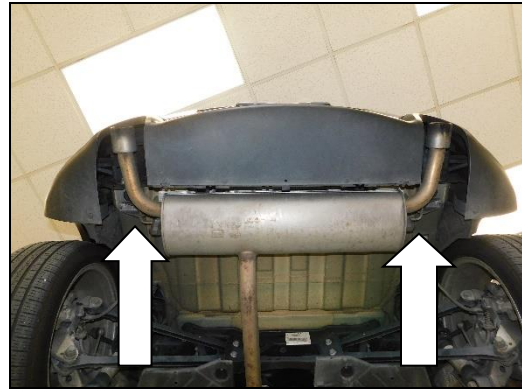


Figure 7

INSTALLATION:

- Remove the tape and deburr the OE exhaust tube. Slide on (x1) supplied 2 ¼" band clamp and install the Blackheart front pipe on to the OE exhaust tube. Now, install the cross brace (**Figure 8**).

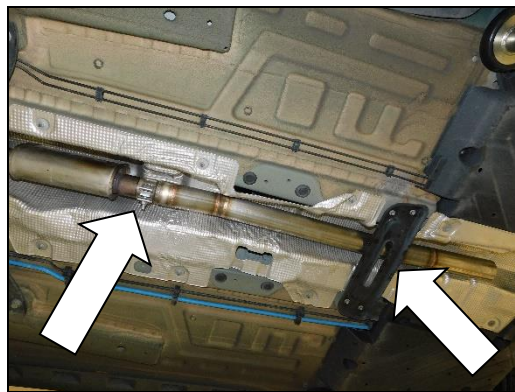


Figure 8

- Slide on the (x2) supplied 2 ½" band clamps and install the Blackheart mid pipe to the Blackheart muffler (**Figure 9**). Now, install the Blackheart muffler and Blackheart mid pipe to the Blackheart front pipe. Slide (x2) hangers in to the OE rubber isolators (**Figure 10**).

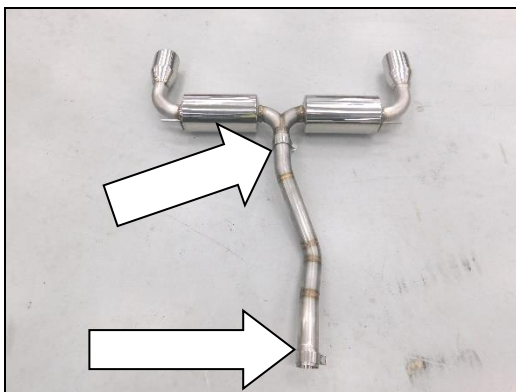


Figure 9

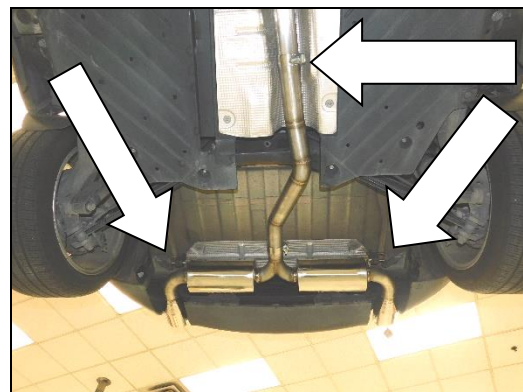


Figure 10

- Line up the exhaust tips and tighten all hardware.
- Re-check your work.
- Remove the jack stands and lower the vehicle.
- After 150 miles, re-check and tighten all bolts and clamps.

NOTE: It is normal for the Blackheart Exhaust System to emit smoke for the first few minutes during break-in period.

LIMITATION OF LIABILITY – DISCLAIMER:

The regulation of emissions production, noise levels, and safety standards is undertaken by the federal government, each of the fifty state legislatures, and by many local municipalities, towns, and counties.

HOOKER™ makes no warranties of merchantability, of fitness for particular purpose, or that its products are approved for general use, or that its products comply with laws, regulations, or ordinances in the state where they may be sold to the ultimate purchaser, the consumer.

Unless expressly stated to the contrary in the catalog, instruction sheet; or price list, the entire risk as to the conformity of any company product in any such state and as to repair should the product prove to be defective or non-conforming, is on the retail purchaser, the buyer, the ultimate consumer, of such product and it is not upon the seller, distributor, or manufacturer.

In this connection, the retail purchaser, the buyer, the ultimate consumer assumes the burden of the entire cost of any and all necessary service, alterations, or repair.

THE FOREGOING STATEMENT LIMITS THE LIABILITY OF THE MANUFACTURER.

California vehicle code, sections 27156 and 38391, prohibits the advertising, offering for sale, or installation of any device, which modifies a vehicle's emission control system, unless exempted, unless otherwise noted. HOOKER™ Headers that have not received an Executive Order (E.O.) exemption from these code sections are not legal for sale or use in California on vehicles originally equipped with catalytic converters, except for racing vehicles, which may never be driven upon a highway. Check with your local authorities to determine if these headers are legal for use in your particular area.

© 2019 Hooker Headers, Inc. All rights reserved. Tous Droits Réservés.

199R11969

Date: 10-9-19