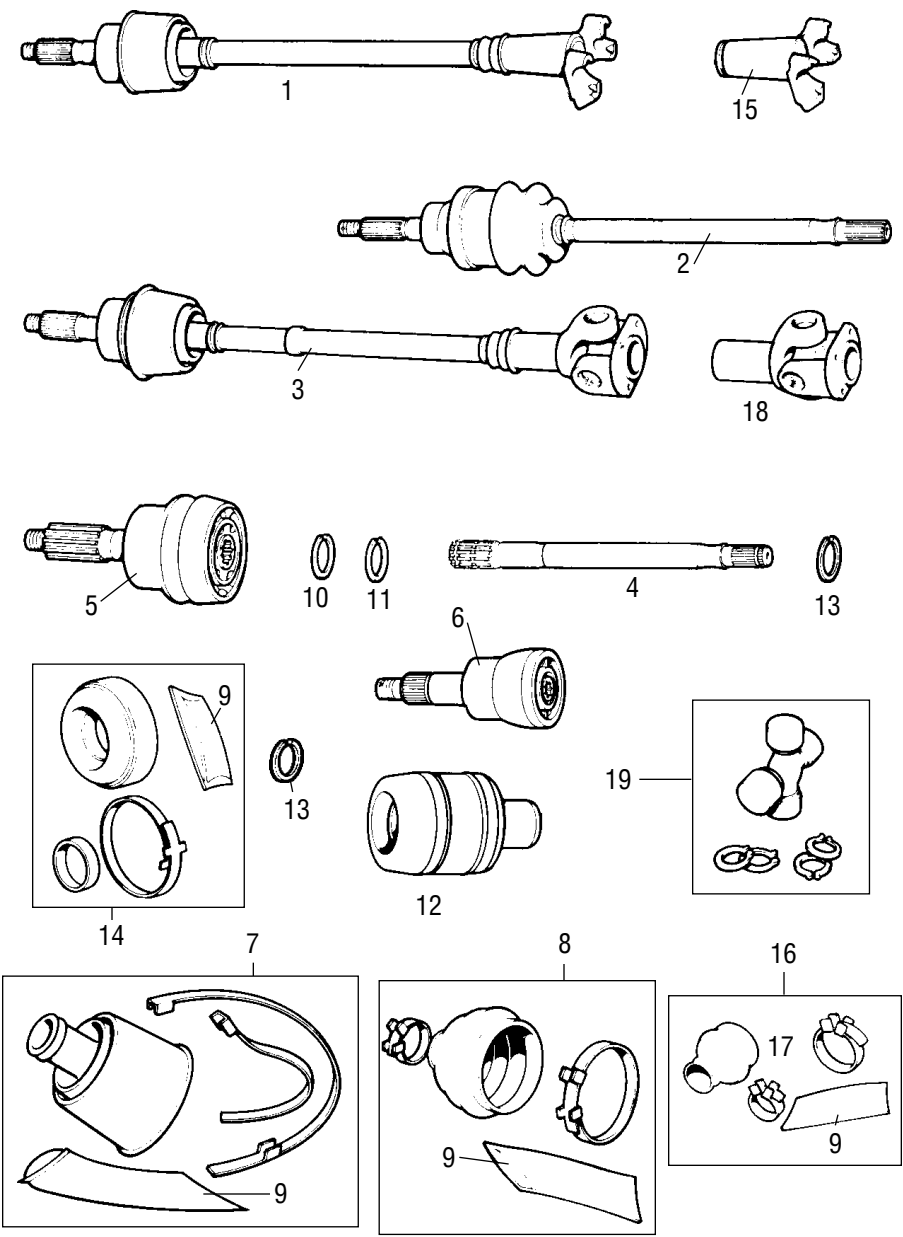


# ***FRONT & REAR SUSPENSION***

<b>DRIVE SHAFTS</b>	<b>2</b>
<b>DRIVE FLANGES &amp; FRONT WHEEL BEARINGS</b>	<b>4</b>
<b>FRONT SUSPENSION</b>	<b>6</b>
<b>FRONT RUBBER CONE SUSPENSION</b>	<b>8</b>
<b>FRONT HYDROLASTIC DISPLACER SUSPENSION</b>	<b>10</b>
<b>REAR SWING ARMS - RUBBER CONE SUSPENSION</b>	<b>12</b>
<b>REAR SWING ARMS - HYDROLASTIC SUSPENSION</b>	<b>14</b>
<b>REAR RUBBER CONE SUSPENSION</b>	<b>16</b>
<b>REAR HYDROLASTIC SUSPENSION</b>	<b>18</b>
<b>STEERING RACK</b>	<b>20</b>
<b>STEERING COLUMNS, LOCKS, AND COLUMNS</b>	<b>22</b>

**DRIVE SHAFTS**



## DRIVE SHAFTS

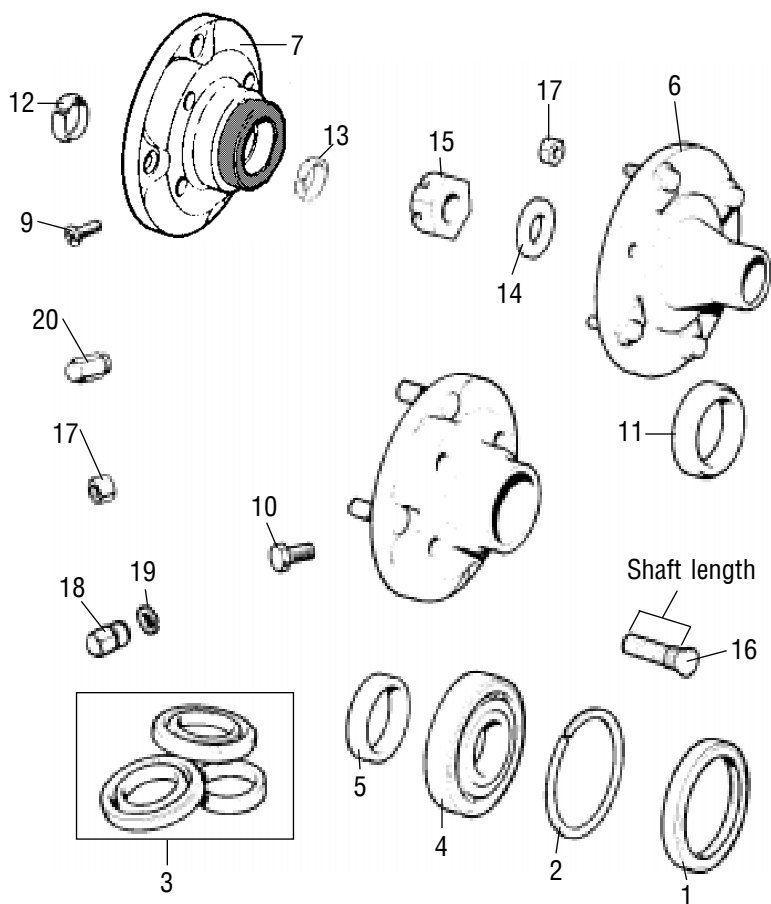
### DRIVE SHAFTS WITH CONSTANT VELOCITY JOINT NUT OF 1 1/8 SOCKET SIZE

NO.	PART NO.	DESCRIPTION	QTY	REMARKS
1	21A1760	R/H driveshaft rubber coupling type, CWE .....	1	997/998 Cooper
1	21A1761	L/H driveshaft.....CWE .....	1	Minis pre discs
2	ADU6282	R/H driveshaft less inboard pot joint was 22A1961 .....	1	Drum brakes 73 on
2	ADU6281	L/H driveshaft less inboard pot joint was 22A1960 .....	1	Drum brakes 73 on
3	21A1852	R/H driveshaft, automatic .....	1	CWE
3	21A1854	L/H driveshaft, automatic .....	1	CWE
5	17H8600	Constant Velocity Joint .....	2	1 1/16 socket

### DRIVE SHAFTS WITH LARGE CV JOINT NUT 15/16 SOCKET SIZE

NO.	PART NO.	DESCRIPTION	QTY	REMARKS
1	21A2295	R/H driveshaft, rubber coupling type, CWE .....	1	1275GT/'S'
1	21A2296	L/H driveshaft, rubber coupling type, CWE .....	1	1275GT/'S'
2	ADU4402	R/H driveshaft less inboard pot joint, was 22A1963 .....	1	Disc except 'S'
2	ADU4403	L/H driveshaft less inboard pot joint, was 22A1962 .....	1	Disc except 'S'
3	21A1857	R/H driveshaft Hardy Spicer type, CWE .....	1	Cooper 'S'
3	21A1858	L/H driveshaft Hardy Spicer type, CWE .....	1	Cooper 'S'
4	27H4775	R/H shaft only, except inboard pot joint type .....	1	Upgraded material spec.
4	27H4776	L/H shaft only, except inboard pot joint type .....	1	Upgraded material spec.
4	MS1246	R/H shaft only, inboard pot joint only all 1973 on .....	1	Upgraded material spec.
4	MS1247	L/H shaft only, inboard pot joint only all 1973 on .....	1	Upgraded material spec.
6	GCV1013	Outer constant velocity joint (Cooper S, late disc brakes) .....	2	1 5/16 socket size
6	27H7567	Outer C.V. joint, includes boot kit (Cooper S, late disc brakes)	2	1 5/16 socket size
7	18G9027MS	Boot kit for either type CV joint (Does not foul hubs) .....	2	Aftermarket
8	GSV1185	Boot kit for either type C.V. ....	2	Unipart
8	GSV1053	Boot kit for GCV1013 genuine .....	2	Late type
9	LMGREASE	Grease for CV joint .....	A/R	In gaiter kit
10	37H8706	Circlip inner, CV joint was 17H8596 .....	2	Extra or pot joint
11	17H8597	Circlip outer, CV joint thick .....	2	
12	DAM667	Inboard C.V. (pot) joint, .....	2	
13	37H8705	Oil seal for pot joint - to shaft .....	2	
14	BHM7012	Gaiter kit for DAM667 .....	2	
14	GSV1073	Heavy duty gaiter for ADU4378 was BHM7205 (genuine) .....	2	
15	21A1696	Flange for rubber coupling type .....	2	
16	18G9029	Gaiter kit for 21A1696 .....	2	
17	21A963	Gaiter only .....	2	As used on Hilo kit
18	27H7880	Hardy Spicer sliding joint .....	2	Auto and 'S'
19	GUJ101	Universal joint repair kit .....	2	Auto and 'S'

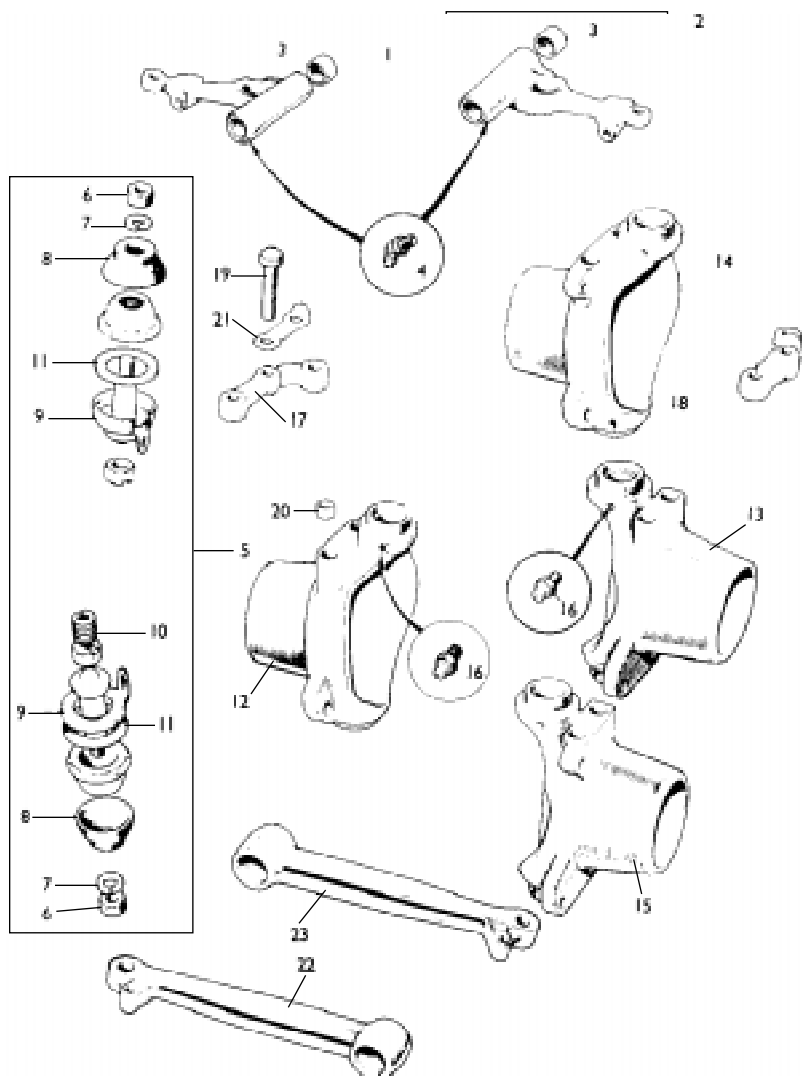
## DRIVE FLANGES AND FRONT WHEEL BEARINGS



## DRIVING FLANGES AND FRONT WHEEL BEARINGS

NO.	PART NO.	DESCRIPTION	QTY	REMARKS
1	GHS173	Oil seal with protector shield inner .....	2	
1	GHS101	Oil seal outer .....	2	
2	2A4361	Spacer, 0.094" 2.38mm seal to inner bearing .....	2	Discs except S NLA
2	21A1307	Spacer, 0.229" 5.81mm seal to inner bearing .....	2	Drum brakes and Cooper
3	GHB1018	Ball bearing kit with seals .....	2	
3	GBH143K	Timken kit with seals .....	2	
4	GHB113	Bearing, early type without built in spacer .....	NLA	
4	GHB211	Bearing with built in spacer .....	2	Use kit GHK1018
5	21A233	Bearing spacer for early type GHB113 only .....	4	
6	21A231	Drive flange, drum brakes only .....	4	CWE
6	BTA191	Drive flange, 997/998cc Cooper 7" disc brake .....	2	NLA
7	21A1270	Drive flange, Cooper 'S' 1275GT, 7.5" brake disc .....	2	With 10" wheels
8	21A2695	Drive flange, 8.4" brake disc, late GT, all Mini's 1984 on .....	2	12" wheels
8	NAM6450F	Drive flange, Turbo Metro/ERA 8" vented disc .....	2	
9	SF604061	Drive flange to brake disc screw .....	8	For 21A1270
9	CMZ407	Drive flange to brake disc screw .....	8	For BTA193
10	BTA370	Drive flange to brake disc bolt .....	8	21A2695
10	ADU6472	Drive flange to brake disc bolt .....	8	For GBD496
11	2A4295	Collar for rear of 21A231/BTA191 drive flange .....	2	Drum brakes and Cooper
12	FAM9270	Outer tapered collar was BTA243, with BTA249 only .....	2	All disc except Cooper
13	BTA663	Inner collar on very early 21A1270 flanges .....	2	Deleted by 1966
14	2A7323	Washers, for use with 21A79 only .....	2	Drum brakes Cooper
15	21A79	Nuts, all drum brakes and Cooper .....	2	1 1/8 AF socket size
15	BTA249	Nuts, disc type except Cooper .....	2	15/16 AF socket size
16	NAM5645	Studs for NAM6450F/21A2695 .....	16	Replaces BTA339
16	BTA339	Studs, 1.1875" (30mm) shaft length, thread length 0.800" ....	16	Now NAM5645
16	21A2064	Studs, Mini and 'S' 1.375" (35mm) shaft length .....	16	Thread length 0.875"
16	21A2064L	Studs, Mini and 'S' 2.000" (50.8mm) shaft length .....	16	Thread length 1.1250"
17	88G322	Wheel nuts, round radius chamfer angle .....	16	
17	113087	Wheel nuts, 60° chamfer angle .....	16	Steel wheels 1985 on
18	GAW115	Mini special 10" alloy wheel use with GAW116 cover .....	16	1979 on
18	NAM9075	Latest Cooper wheel nuts (Minilite lookalike) .....	16	
18	FAM5701	Late Mini 10" hub cap round radius chamfer angle .....	16	
18	FAM3721	Wheel nuts for 10" hub cap 60° chamfer angle .....	16	Mini City
18	AJM1139	Wheel nuts for 12" hub cap 60° chamfer angle .....	16	Mayfair 1985 on
18	FAM4010	Wheel nuts for Denovo, Rostyle .....	16	NLA
18	FAM64	Wheel nuts for 12" hub cap on 1275GT only .....	16	NLA
19	FAM2563	Washers for FAM5701/3721 .....	16	
19	FAM65	Washers for FAM64 .....	16	
20	CN1	Chrome wheel nuts .....	16	Alternative to 88G322
20	AHA8785	Chrome wheel nuts, 60° chamfer dome - .....	16	1275 GT Rostyle wheel
20	CN2	Chrome wheel nuts, 60° chamfer angle .....	16	Weller steel and Rostyle

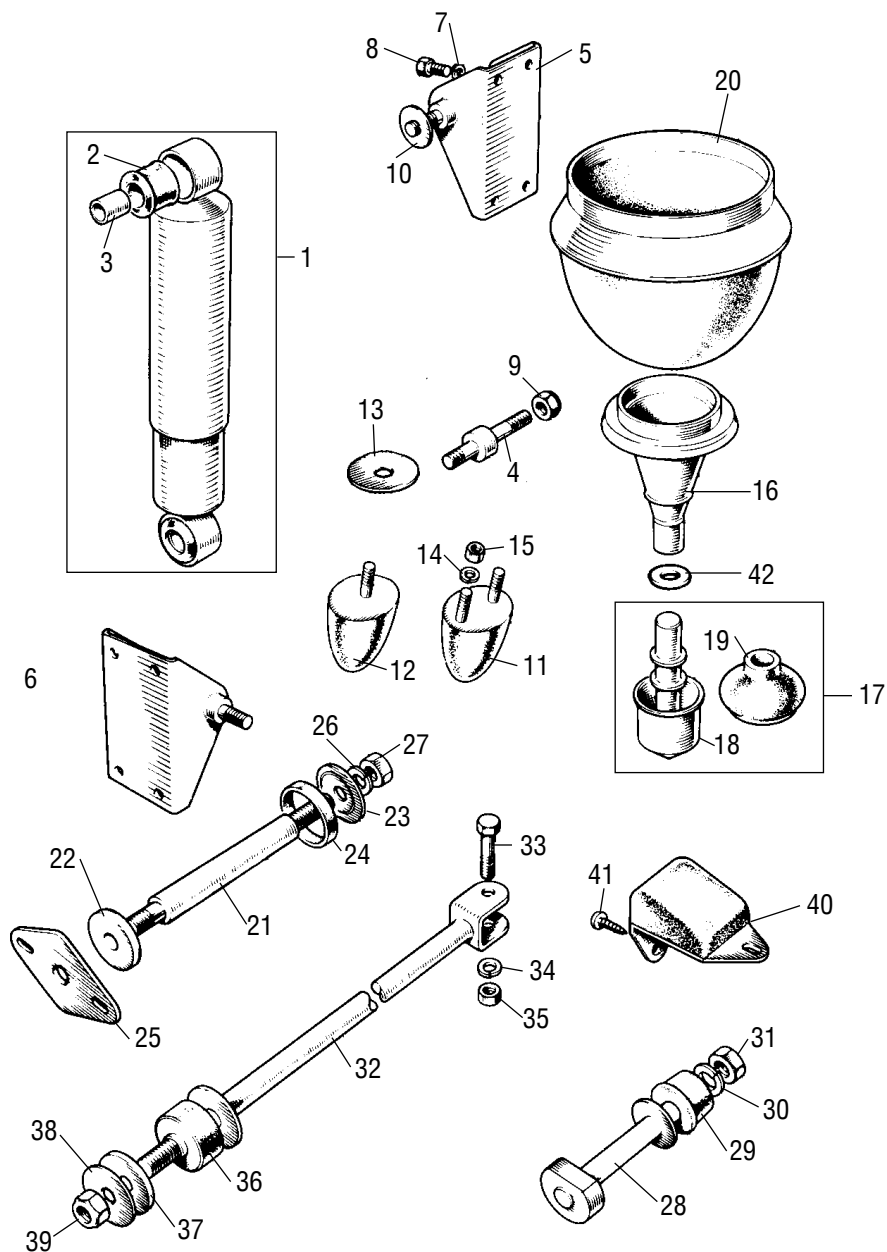
## FRONT SUSPENSION



## FRONT Suspension

NO.	PART NO.	DESCRIPTION	QTY	REMARKS
1	21A2690	Upper arm R/H, rubber cone .....	1	
2	21A2691	Upper arm L/H, rubber cone .....	1	
1	21A1479	Upper arm R/H, hydroelastic .....	1	CWE
2	21A1482	Upper arm L/H, hydroelastic .....	1	NLA
3	88G302	Needle roller bearing, upper arm .....	4	
4	UHN445	Grease nipple, upper arm .....	2	
5	GSJ166	Swivel pin kit, one each upper and lower .....	2	
5	GSJ166MS	Swivel pin kit, one each upper and lower .....	2	Aftermarket
6	FNZ507	Nut .....	4	
7	LWZ307	Spring washer .....	4	
8	BTA377	Dust cover .....	4	
9	2A4238	Locktab .....	4	All in GSJ166
10	21A370	Spring .....	2	
11	2A4240	Washer 0.005" (.127mm) .....	A/R	
11	2A4241	Washer 0.010" (.254mm) .....	A/R	
12	21A371	Swivel hub R/H .....	1	Drum brakes
13	21A372	Swivel hub L/H .....	1	Drum brakes
14	FAM2390	Swivel hub R/H, was BTA186 .....	1	Disc brakes
15	FAM2391	Swivel hub L/H, was BTA187 .....	1	Disc brakes
16	UHN400	Grease nipple, hub .....	4	
17	BTA896	Steering arm R/H, pre 1974 .....	1	Except Cooper 'S' 1275GT
18	BTA897	Steering arm L/H, pre 1974 .....	1	Except Cooper 'S' 1275GT
17	BTA894	Steering arm R/H .....	1	Cooper 'S' 1275GT only
18	BTA895	Steering arm L/H .....	1	Cooper 'S' 1275GT only
17	FAM7662	Steering arm L/H .....	1	Metro
18	FAM7663	Steering arm R/H .....	1	Metro
19	2A4315	Steering arm bolt .....	4	
20	2A4314	Steering arm dowel .....	4	
21	2K5377	Locktab .....	2	
22	21A1879	Lower arm R/H (tapered bush hole), .....	1	use 21A1882 bush
23	21A1881	Lower arm L/H (tapered bush hole), .....	1	use 21A1882 bush
22	ERA1038	Lower arm R/H .....	1	ERA Turbo with 13" wheels
23	ERA1039	Lower arm L/H .....	1	ERA Turbo with 13" wheels
23	C-AJ3364	Lower arm kit (negative camber) .....	1 pr	

# FRONT RUBBER CONE SPRING SUSPENSION

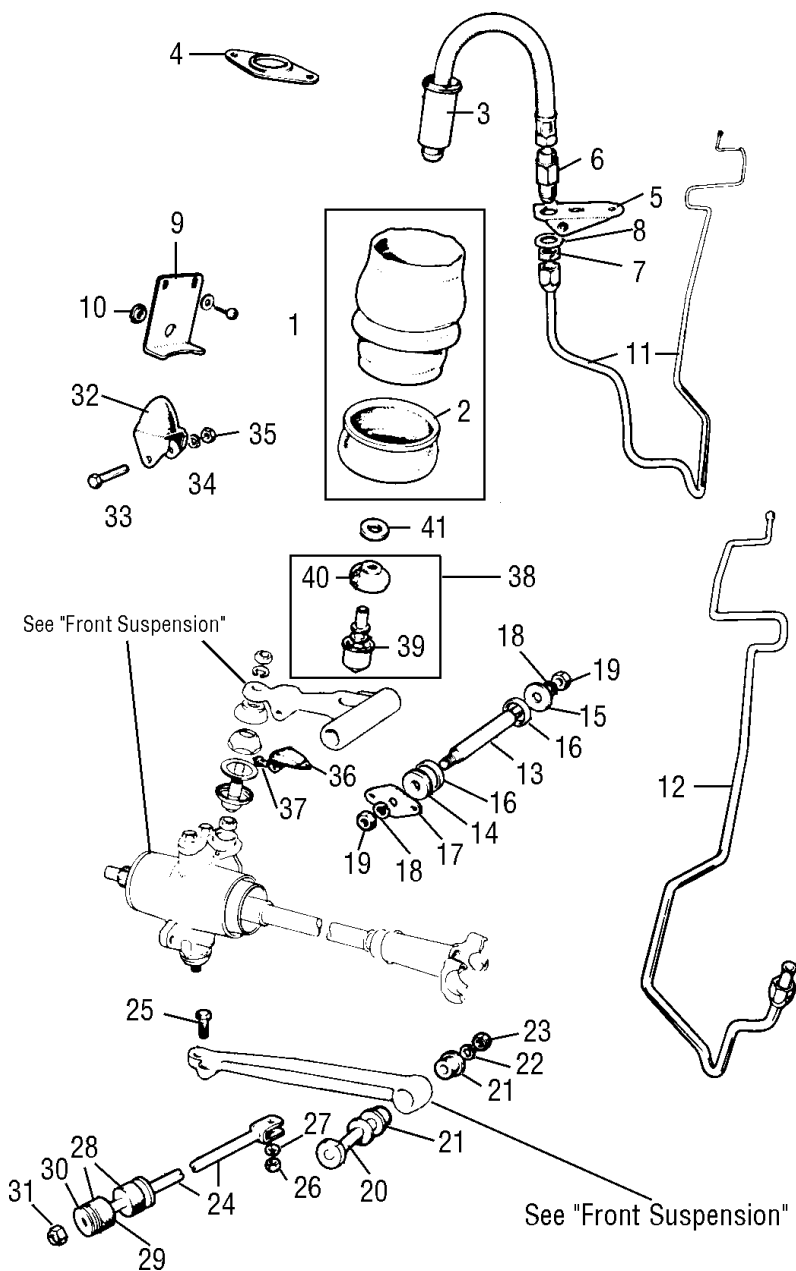




## FRONT RUBBER CONE SPRING SUSPENSION (KNOWN AS DRY SUSPENSION)

NO.	PART NO.	DESCRIPTION	QTY	REMARKS
1	GSA388	Genuine Unipart .....	2	
1	442001	KYB standard replacement .....	2	
2	21A1230	Shock absorber bush, was 21A503 .....	4	
3	21A504	Sleeve for shock absorber bush .....	4	
4	C-AJJ3361	Lower shock absorber anchor pin, strenghtened .....	2	
4	2A4337	Lower shock pin .....	2	
5	21A471	R/H shock absorber upper bracket .....	1	C-AJJ3359 pair
6	21A474	L/H shock absorber upper bracket .....	1	For lowered use
7	GHF331	Spring washer was LWZ204 .....	8	
8	GHF117	Bolt, bracket to inner wing .....	8	
9	GHF221	Nylon nut for C-AJJ3361 .....	8	
10	AJD7162	Washer to retain shock absorber bush/ferrule .....	8	
11	2A4332	Bump stop, early two-bolt .....	2	
12	FAM2764	Single bolt bump stop mounted subframe .....	2	1976 on
13	FAM2767	Packing washer for FAM2764 .....	2	
14	GHF331	Spring washer .....	2/4	
15	GHF200	Nut for bump stop .....	2/4	
16	21A530MS	Suspension cone strut (trumpet) .....	2	
17	GSV1118	Suspension knuckle .....	2	Genuine
17	21A1163	Suspension knuckle .....	2	Aftermarket
17	GSV1188	Suspension knuckle 1992-on .....	2	
18	21A423	Nylon cup .....	2	Part of
19	21A425	Dust cover .....	2	GSV1128
20	FAM3968	Suspension rubber cone spring .....	2	
21	2A4325	Upper arm support shaft .....	2	Available as
22	2A4326	Thrust collar .....	2	kit MSK1
23	2A7324	Thrust washer .....	2	per side
24	2A7327	Rubber sealing ring .....	4	
25	2A4327	Retaining plate .....	2	
26	GHF335	Spring washer was LWZ308 .....	4	
27	FNZ508	Nut .....	4	
28	21A1889	Lower arm support shaft .....	2	
29	21A1882	Lower arm bushes with metal insert .....	4	Tapered hole in arm
29	WB2	Lower arm bush, set of four, polyurethane .....	1	Tapered hole in arm
29	2A4294	Lower arm shouldered bush, pre 1965 .....	4	Straight hole in arm
29	WB1	Lower arm bush, set of four, polyurethane .....	1	Straight hole in arm
30	GHF333	Spring washer .....	2	
31	FNZ506	GHF223 nut for support shaft was FNZ506 .....	2	
32	21A450	Tie rod .....	2	
	21A1091	Tie rod , pair, heavy duty adjustable .....	1	Not shown
33	53K1031	Tie rod bolt .....	2	
34	GHF332	Washer .....	2	
35	FNZ505	Nut .....	2	
36	31G1155	Tie rod bush .....	4	
36	C-STR628	Tie rod bush, set of four, slightly harder .....	1	
36	WB3	Tie rod bush, set of four, polyurethane .....	1	
37	ACA9759	Cup washer .....	2	
38	PWZ207	Plain washer .....	2	
39	GHF223	Nut .....	2	
40	2A4267	Rebound buffer .....	2	
41	13H2776	Screw .....	2	
42	21A1845	Packing washer to raise suspension .....	A/R	

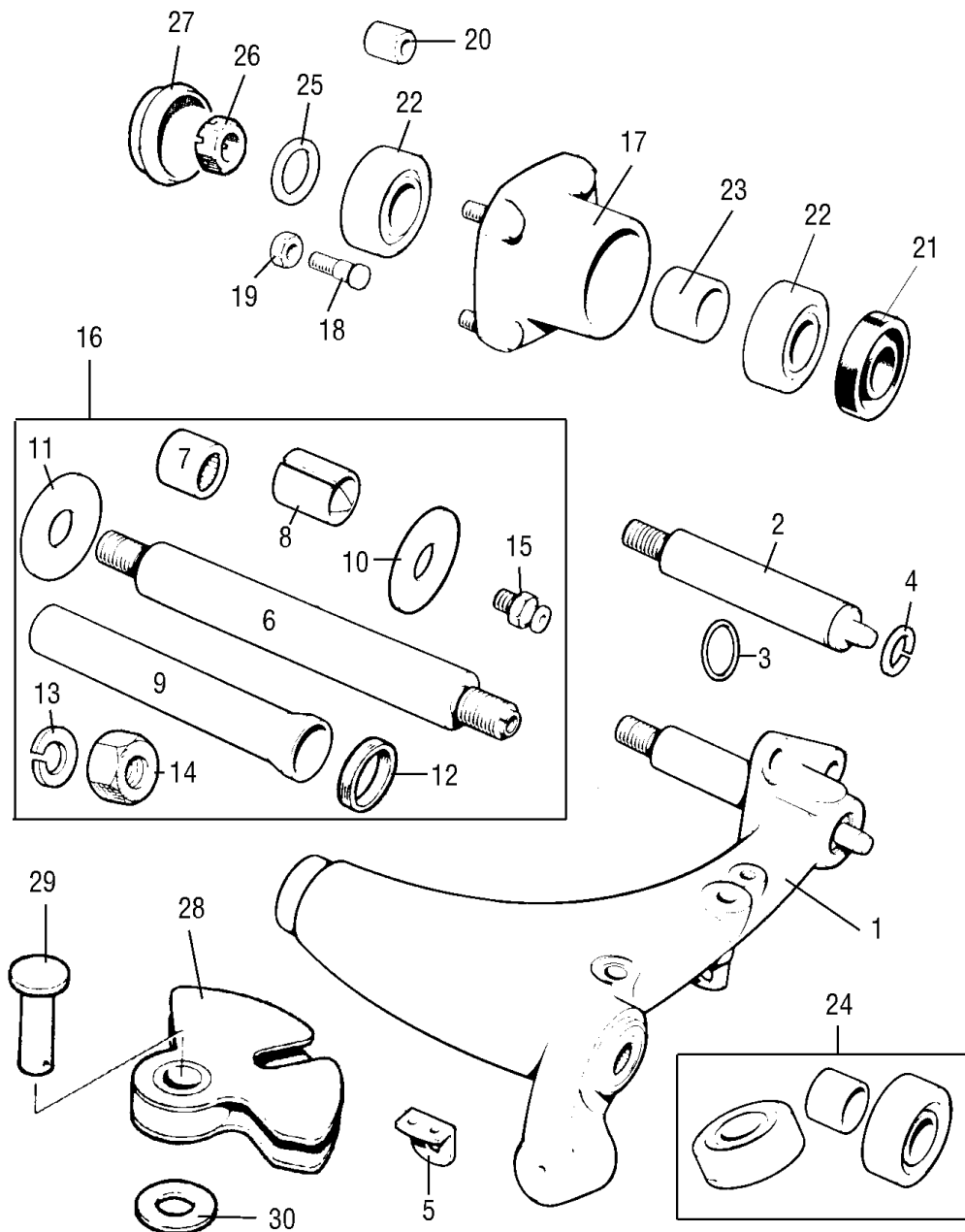
# FRONT HYDROLASTIC DISPLACER SUSPENSION



## FRONT HYDROLASTIC DISPLACER SUSPENSION (KNOWN AS WET SUSPENSION)

NO.	PART NO.	DESCRIPTION	QTY	REMARKS
1	21A2008	Displacer unit (hose part of displacer only) .....	2	NLA
2	21A1496	Dust excluder .....	2	
3	21A1515	Protection sleeve for hose .....	2	
4	21A1487	Protection sleeve retainer .....	2	
5	21A1522	Adaptor plate bracket .....	1	NLA
6	21A1524	Adaptor .....	2	
7	17H8236	Nut .....	2	
8	LWZ410	Washer .....	2	
9	21A1687	Bracket to hold displacer to subframe .....	2	NLA
10	14A7031	Plug for bracket .....	2	
11	21A1575	Steel hydrolastic pipe, front to rear R/H .....	1	
12	21A1577	Steel hydrolastic pipe, front to rear L/H .....	1	
	FSP3	Plastic hydrolastic pipe, fits either side .....	2	Alternative to steel
13	2A4325	Upper arm support .....	2	
14	2A4326	Thrust collar .....	2	Available in kit
15	2A7324	Thrust washer .....	2	MSK1
16	2A7327	Rubber sealing ring .....	4	per side
17	2A4327	Retaining plate .....	2	
18	GHF335	Spring washer was LWZ308 .....	4	
19	FNZ508	Nut .....	4	
20	2A4362	Lower arm support shaft was 21A1889 .....	2	
21	21A1882	Lower arm bushes with metal insert .....	4	All 'S' plus 1966 on
21	WB2	Lower arm bush set, polyurethane .....	1	Taperd hole in arm
21	2A4294	Lower arm shouldered bush, no insert .....	4	Pre 1966 models
21	WB1	Lower arm bush set, polyurethane .....	1	Straight hole in arm
22	GHF333	Spring washer was LWZ206 .....	2	
23	FNZ506	Nut .....	2	
24	21A450	Tie rod .....	2	
25	53K1031	Tie rod bolt .....	2	Available
26	FNZ505	Nut .....	2	as kit
27	GHF332	Washer .....	2	8G4249
28	31G1155	Tie bar bush .....	4	per side
29	ACA9759	Cup washer .....	2	
30	PWZ207	Flat washer .....	2	
31	GHF223	Nut .....	2	
32	21A1598	Bump stop .....	2	CWE
33	HBZ420	Bolt .....	2	
34	LWZ204	Spring washer .....	2	
35	FNZ104	Nut .....	2	
36	2A4267	Rebound buffer .....	2	
37	13H2776	Screw .....	2	
38	21a1163	Knuckle joint .....	2	Aftermarket
38	GSV1118	Knuckle joint .....	2	
39	21A423	Nylon cup .....	2	Part of
40	21A425	Dust cover .....	2	GSV1118
41	21A1845	Packing washer to raise suspension .....	A/R	

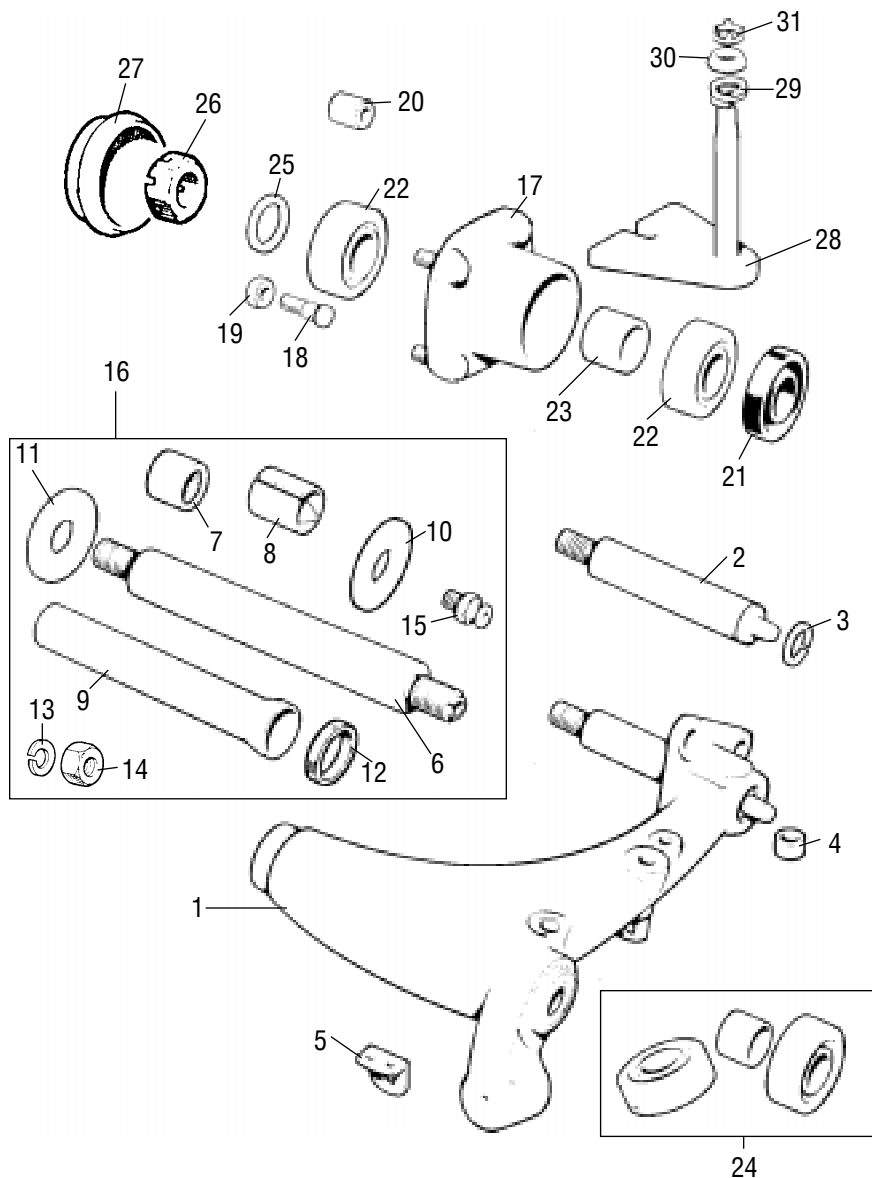
# REAR SWING ARMS - RUBBER CONE SUSPENSION



## REAR RADIUS ARMS, CONE SUSPENSION

NO.	PART NO.	DESCRIPTION	QTY	REMARKS
1	21A392	Swing arm R/H .....	1	
1	21A392/R	Swing arm, R/H, rebuilt .....	1	
1	21A393/C	Swing arm, R/H, complete with brake assembly .....	1	
1	21A393	Swing arm, L/H .....	1	
1	21A393/R	Swing arm, L/H, rebuilt .....	1	
1	21A393/C	Swing arm, L/H, complete with brake assembly .....	1	
2	2A7351	Radius arm stub axle R/H .....	1	
2	2A7364	Radius arm stub axle L/H .....	1	
4	2A7352	Stub axle circlip .....	2	
5	21A397	Bracket on radius arm for hose .....	2	
6	ACA9099	Pin .....	2	
7	ATJ4098	Roller bearing inner, was 13H442 .....	2	
8	2A7325	Bronze bush outer .....	2	
9	21A396	Metal grease sleeve, being replaced by plastic sleeve .....	2	
10	2A7324	Outer thrust washer .....	2	
11	ACA9302	Inner thrust washer .....	2	
12	2A7327	Sealing rubber ring .....	4	
13	LWZ208	Spring washer .....	4	
14	FNZ508	Nut .....	4	
15	UHN400	Grease nipple .....	2	
16	GSV1125	Radius arm repair kit .....	2	
17	21A2023	Hub with studs .....	2	
17	21A1277	Hub with long studs, 'S' and 1275GT plus all 1984 on .....	2	
18	21A2064	Wheel stud, shaft length 1.375" 35mm .....	8	Thread length 0.875"
18	21A2064L	Wheel stud, shaft length 2.000" 50.80mm .....	8	Thread length 1.125"
18	ATA7085	Wheel stud, shaft length 1.6875" 42.65mm .....	8	Thread length 1.000"
18	21A1278	Wheel stud, shaft length 2.375" 60.30mm .....	8	Thread length .750"
18	ENJO-1039	Wheel stud, shaft length 2.375" 60.30mm .....	8	Thread length 1.125"
18	ERA1268	Wheel stud, shaft length 2.437" 62mm .....	8	Thread length 1.000"
19	88G322	Wheel nuts, round radius chamfer angle .....	16	
19	113087	Wheel nuts, 60° chamfer angle .....	16	Steel wheel 1985 on
20	CN1	Chrome wheel nut .....	16	Alternative to 88G322
20	CN4	Chrome wheel nut, wide base .....	16	Alternative to 88G322
20	AHA8785	Chrome wheel nut, 60° chamfer dome - 1275GT Rostyle .....	16	Weller steel, use CN2
20	CN2	Chrome wheel nut, 60° chamfer angle .....	16	Weller steel and Rostyle
20	CN5	Chrome wheel nut, wide base .....	16	Alternative to CN2
21	GHS134	Metal backed 'S' oil seal .....	2	Use GHS102
21	GHS102	Hub oil seal .....	2	
22	GHB116	Bearing without built in spacer .....	4	NLA, use GHK1088
22	GHB212	Bearing with built in spacer .....	4	Part of GHK1088
23	2A7354	Spacer when GHB116 fitted (Not Timken) .....	2	
24	GHK1088	Ball bearing kit with built in spacer and seals .....	2	
24	GHK1141	Timken tapered roller bearing set with seals .....	2	S, and Mini 1984-on
25	BTA672	Hub washer .....	2	
26	NL610041	Hub nut R/H .....	1	
26	FNN2410	Hub nut L/H .....	1	Left hand thread
27	ATB4098	Grease retaining cap .....	2	
28	21A2454	Hand brake quadrant .....	2	
29	CLZ549	Clevis pin, was BH605281 bolt .....	2	
30	AWZ105	Washer .....	2	

# REAR SWING ARMS - HYDROLASTIC SUSPENSION

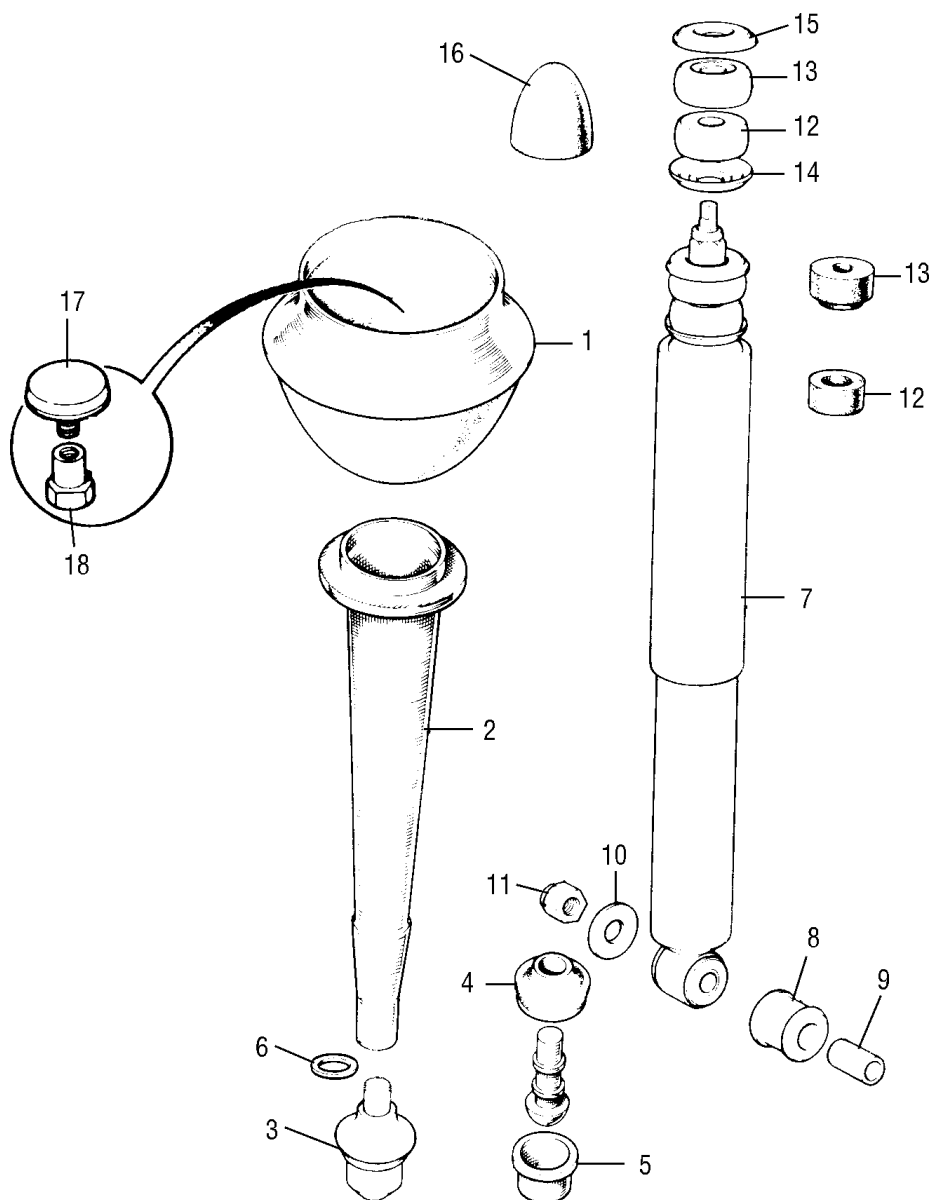


## REAR RADIUS ARMS HYDROLASTIC SUSPENSION

NO.	PART NO.	DESCRIPTION	QTY	REMARKS
1	21A1485	Hydrolastic radius arm R/H .....	1	CWE
1	21A1489	Hydrolastic radius arm L/H .....	1	NLA
2	21A1486	Stub axle R/H .....	1	CWE
2	21A1490	Stub axle L/H .....	1	NLA
3	2A7352	Stub axle circlip .....	2	
4	LBS507	Bush for pivot arm .....	2	CWE
5	21A1375	Bracket on radius arm for hose .....	2	NLA
6	ACA9099	Radius arm pin .....	2	
7	ATJ4098	Roller bearing inner, was 13H442 .....	2	
8	2A7325	Bronze bush outer .....	2	
9	21A396	Metal grease sleeve, replaced by plastic sleeve .....	2	
10	2A7324	Outer thrust washer .....	2	
11	ACA9302	Inner thrust washer .....	2	
12	2A7327	Sealing rubber ring .....	4	
13	LWZ208	Spring washer .....	4	
14	FNZ508	Nut .....	4	
15	UHN400	Grease nipple .....	2	
16	GSV1125	Radius arm repair kit, was 8G7134 .....	2	
17	21A2023	Hub with studs .....	1	
17	21A1277	Hub with long studs, 1275GT 'S' .....	1	
18 *	21A2064	Wheel stud shaft length 1.375" 35mm .....	1	Thread length 0.875"
18	21A2064L	Wheel stud shaft length 2.000" 50.80mm .....	1	Thread length 1.125"
18	ATA7085	Wheel stud shaft length 1.687" 42.65mm .....	1	Thread length 1.000"
18 *	21A1278	'S' Wheel stud shaft length 2.375" 60.30mm .....	1	Thread length 0.750"
18	ENJO-1039	Wheel stud shaft length 2.375" 60.30mm .....	1	Thread length 1.125"
18	ERA1268	Wheel stud shaft length 2.437" 62mm .....	1	Thread length 1.000"
19	88G322	Wheel nuts, round radius chamfer angle .....	8	
20	CN1	Chrome wheel nut .....	16	Alternative to 88G322
20	CN4	Chrome wheel nut, wide base .....	16	Alternative to 88G322
20	AHA8785	Chrome wheel nut, 60° chamfer dome - 1275GT Rostyle .....	16	Weller steel, use CN2
20	CN2	Chrome wheel nut, 60° chamfer angle .....	16	Weller steel and Rostyle
20	CN5	Chrome wheel nut, wide base .....	16	Alternative to CN2
21	GHS134	Metal backed 'S' rear hub oil seal .....	2	Use GHS102
21	GHS102	Rear hub oil seal .....	2	
22	GHB116	Bearing without built in spacer .....	4	NLA use GHK1352
22	GHB212	Bearing with built in spacer .....	4	Part of GHK1352
23	2A7354	Spacer when GHB116 fitted .....	2	
24	GHK1088	Bearing kit with built in spacer and seals .....	2	
24	GHB147K	Timken tapered roller bearing set with seals .....	2	S, and Mini 1984-on
25	BTA672	Hub washer, was 21A1892 .....	2	
26	NL610041	Hub nut R/H .....	1	
26	FNN2410	Hub nut L/H .....	1	Left hand thread-
27	ATB4098	Grease retaining cap .....	2	
28	21A1507	Hand brake quadrant .....	2	
29	2K2545	Spring washer .....	2	
30	21A1512	Thrust washer .....	2	
31	21A1513	Spire clip .....	2	

\* Standard fitment, shorter for GDB105, brake drum, longer for GDB106 brake drum with 1" built in spacer  
All wheel nuts shown on drive flange and bearing page.

## REAR RUBBER CONE SUSPENSION



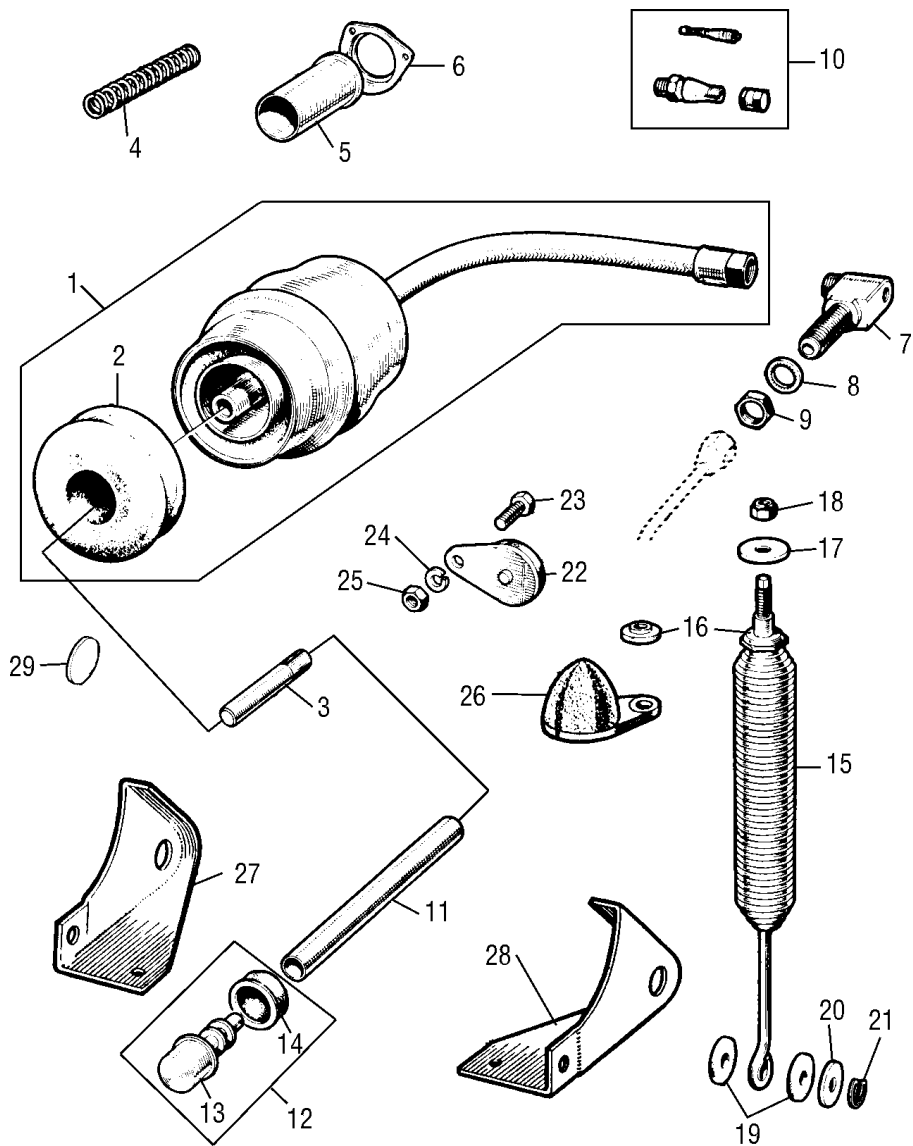


## REAR SUSPENSION RUBBER CONE

NO.	PART NO.	DESCRIPTION	QTY	REMARKS
1	FAM3968	Suspension cone .....	2	Metric thread
2	21A1683	Alloy strut, C.W.E. ....	2	Saloon only to 1984
2	21A1684	Alloy strut (longer) .....	2	All vans, saloons 1984 on
3	GSV1118	Suspension knuckle joint complete .....	2	
3	21A1163	Suspension knuckle joint complete .....	2	Aftermarket
4	21A425	Knuckle gaiter .....	2	
5	21A423	Knuckle nylon cup .....	2	
6	21A1845	Washer to raise suspension .....	A/R	
7	GSA389	Shock absorber, Unipart .....	2	
7	442002	Shock absorber, STD KYB .....	2	
8	21A1230	Shock absorber lower bush, was 21A503 .....	2	
9	21A504	Lower bush sleeve .....	2	
10	AJD7162	Washer .....	2	
11	GHF273	Nut .....	2	
12	21A1314	Lower of top shock absorber bush .....	2	
13	GZS1477	Upper of top shock absorber bush .....	2	
14	21A2325	Lower washer .....	2	NLA
15	21A639	Upper washer .....	2	NLA
16	21A640	Buffer .....	2	Van and Estate
17	ERA1190	Bump stop, fits FAM3968 on late subframe 1990 on .....	2	ERA Turbo
18	ERA1191	Cap bolt for bump stop, fits FAM3968 .....	2	ERA Turbo



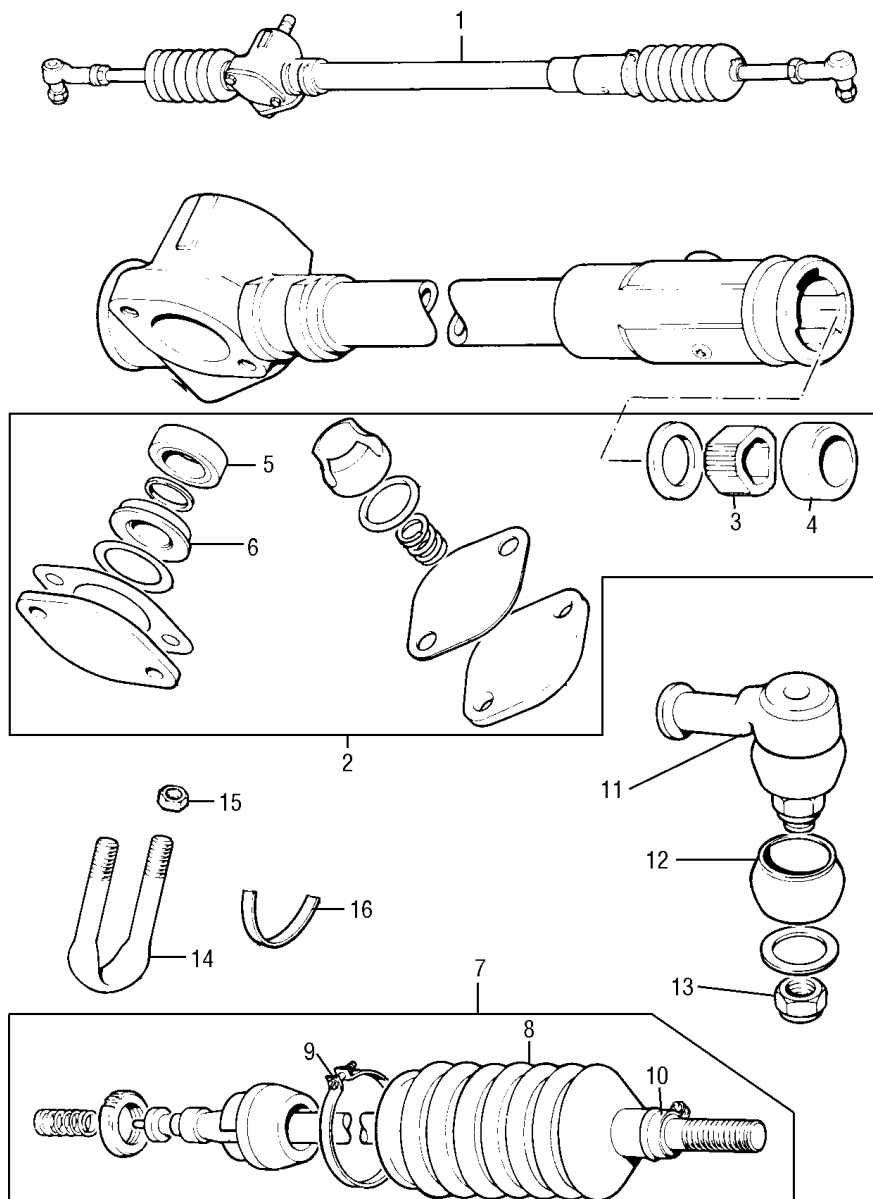
# REAR HYDROLASTIC SUSPENSION



## REAR SUSPENSION - HYDROLASTIC

NO.	PART NO.	DESCRIPTION	QTY	REMARKS
1	21A2008	Displacer unit .....	2	CWE
2	21A1496	Dust cover .....	2	
3	21A1704	Dowel .....	2	NLA
4	4G7809	Compression spring .....	2	NLA
5	21A1515	Sleeve .....	2	
6	21A1757	Sleeve retainer .....	2	
7	21A1519	Elbow for pipe to hose .....	2	
8	LWZ410	Locking washer .....	2	
9	17H8236	Nut .....	2	
10	13H1705	Valve assembly .....	2	
11	21A1805	Strut .....	2	
12	GSV1118	Suspension knuckle joint complete .....	2	
13	21A425	Knuckle nylon cup .....	2	
14	21A423	Knuckle gaiter .....	2	
15	21A1806	Helper spring .....	2	
16	12A1358	Helper spring bush was 21A1492 .....	4	
17	53K3446	Special washer .....	2	NLA
18	GHF222	Lock nut .....	2	
19	21A1493	Felt washer .....	4	
20	PWZ306	Plain washer .....	2	
21	13H2193	Retainer clip .....	2	
22	21A1517	Rebound buffer .....	2	
23	SH605051	Bolt .....	2	
24	GHF332	Spring washer .....	2	
25	GHF201	Nut .....	2	
26	21A1520	Bump stop buffer .....	2	
27	14A6615	Radius arm shroud R/H .....	1	
28	14A6616	Radius arm shroud L/H .....	1	
29	14A7091	Rubber plug for grease hole, on 14A6615/6 .....	2	

# STEERING RACK

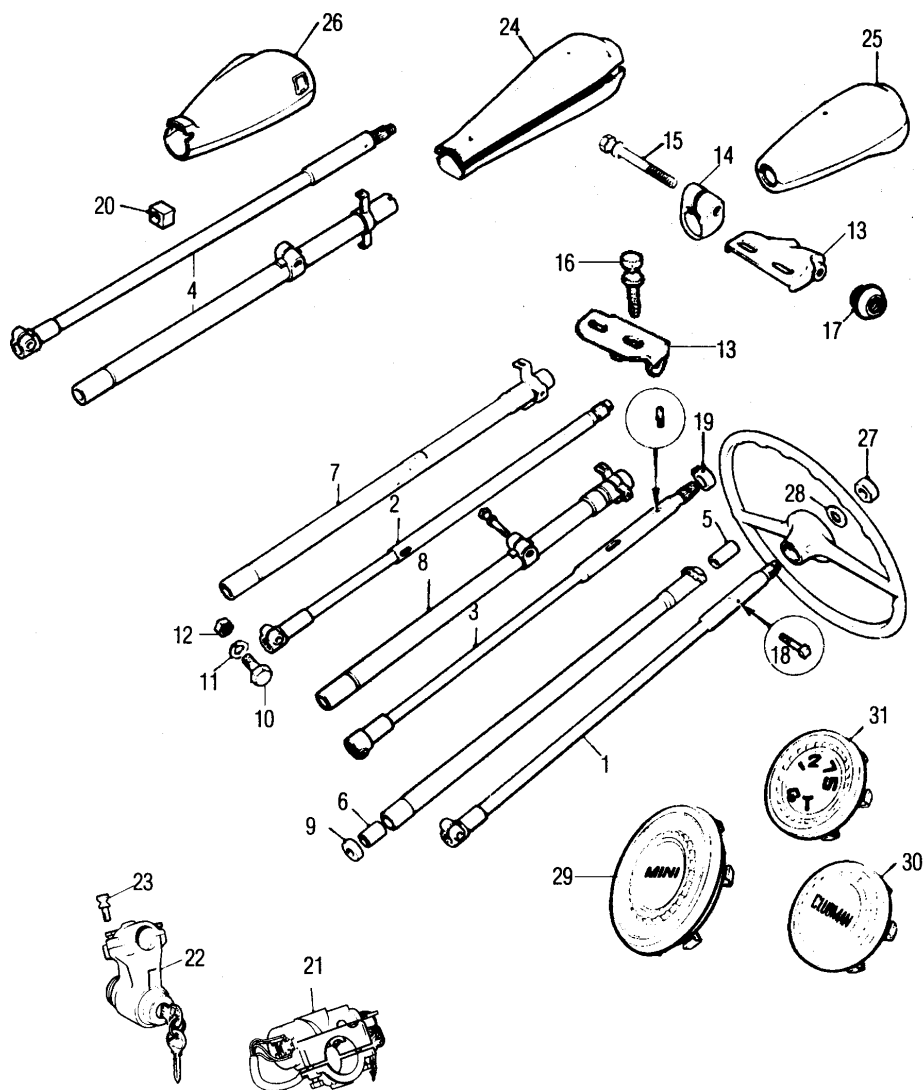


## STEERING RACK

NO.	PART NO.	DESCRIPTION	QTY	REMARKS
1	AAU6950	GSR307E Steering rack .....	1	MKI - NLA
1	FAM7307N	Steering Rack, LHD .....	1	MKII on
1	FAM7307MS	Steering Rack, LHD, QH .....	1	MKII on
1	GSR158E	Steering Rack LHD, rebuilt .....	1	MKII on
1	C-FAM7307	Steering Rack, LHD, quick ratio .....	1	
1	GSR626E	Steering Rack, RHD .....	1	MKII on
1	C-GSR626	Steering Rack, RHD, quick ratio .....	1	
2	GSV1052	Repair kit .....	1	1968 on
3	37H8064	Steering rack nylon bearing .....	1	
4	37H2079	Metal spacer .....	1	
5	88G499	Oil seal .....	1	
6	BTA662	Bearing, (NLA separately, part of GSV1052) .....	1	NLA
7	GSV1009	Tie rod repair kit .....	1	1968 on
8	BHM7113	Gaiter kit rubber .....	1 pr	
8	GSV1153	Gaiter kit genuine with clips, (rubber) .....	1 pr	
8	GSV1056	Rover gaiter kit for GSR157/8 (plastic gaiter) .....	1 pr	
8	17H6298	Gaiter rubber, single without clips .....	2	
9	CCA35	Inner seal clip .....	2	Not GSR157/8
10	ACH5854	Outer seal clip .....	2	
11	GSJ100	Tie rod end .....	2	
11	GSJ158	Tie rod end, slightly longer .....	2	
12	7H3762	Gaiter .....	2	
13	GHF223	Nut, supplied on track rod .....	2	
14	2A6208	U Bolt, rack to body .....	2	
15	GHF222	U Bolt nut .....	4	
16	21A2553	Anti-friction packing piece plastic strip .....	2	



## STEERING COLUMNS, LOCKS AND COWLINGS



## STEERING COLUMNS, LOCKS AND COWLINGS

NO.	PART NO.	DESCRIPTION	QTY	REMARKS
1	21A1871	Inner column MK1 has recess for horn wires, NLA .....	1	Use 21A2069 and machine
1	21A2069	Inner column MK2 .....	1	No steering lock
2	21A2437	Inner column when steering lock, NLA .....	1	Use FAM5285
3	FAM5285	Inner column .....	1	Steering lock
3	FAM5285MS	Inner column, non genuine .....	1	Steering lock
4	NAM8527	Inner column and outer column complete .....	1	1985 on
5	FAM2406	Steering column top bush .....	1	Was 31G120
5	NAM8553	Steering column top bush .....	1	1985 on
6	GSV1127	Steering column lower felt bush .....	1	Was 21A998
6	NAM8563	Steering column lower bush .....	1	1985 on
7	21A2066	Outer steering column .....	1	Non steering lock pre 1976
8	21A2436	Outer steering column .....	1	With steering lock pre 1976
9	21A30	Rack to body seal .....	1	
10	BH604111	Steering column lower pinch bolt .....	1	
11	GHF331	Spring washer .....	1	
12	GHF200	Nut .....	1	
13	21A2463	Clip to body bracket .....	1	Steering lock only
14	21A2666	Column to bracket clip .....	1	Steering lock only
15	51K4006	Column to clamp bolt .....	1	2.69" long
16	51K4002	Clip to body shear bolt .....	2	1.45" long
17	21H295	Nut, bracket to column .....	1	
18	21A2080	Actuator pin for indicators - non steering lock .....	1	
19	21H208	Plastic actuator clip, use 21A2661 .....	1	1970 on
20	21A2661	Actuator for indicator switch .....	1	1976 on
21	18G8892	Steering lock (key enters from side), R/H/D .....	1	To 1976
22	BHM7107	Steering lock (key enters in front of driver) .....	1	1976 on
23	51K4001	Steering lock shear bolt .....	2	
24	8G6027	Plastic column cowl MK1 .....	1	Reproduction
25	8G6035	Plastic column cowl MK2/3 .....	1	No steering lock
25	18G8803	Plastic column cowl M2/3, CWE .....	1	With steering lock
26	BHM7085	Plastic column cowl MK4 .....	1	Twin stalks
26	BHM7361	Plastic column cowl MK4 grey .....	1	
27	ACH6001	Steering wheel nut .....	1	
28	53K3480	Shakeproof washer .....	1	
29	21A2252	Mini motif for steering wheel .....	1	CWE
30	21A2228	Clubman motif for steering wheel .....	1	CWE
31	21A2324	1275GT motif for steering wheel .....	1	NLA