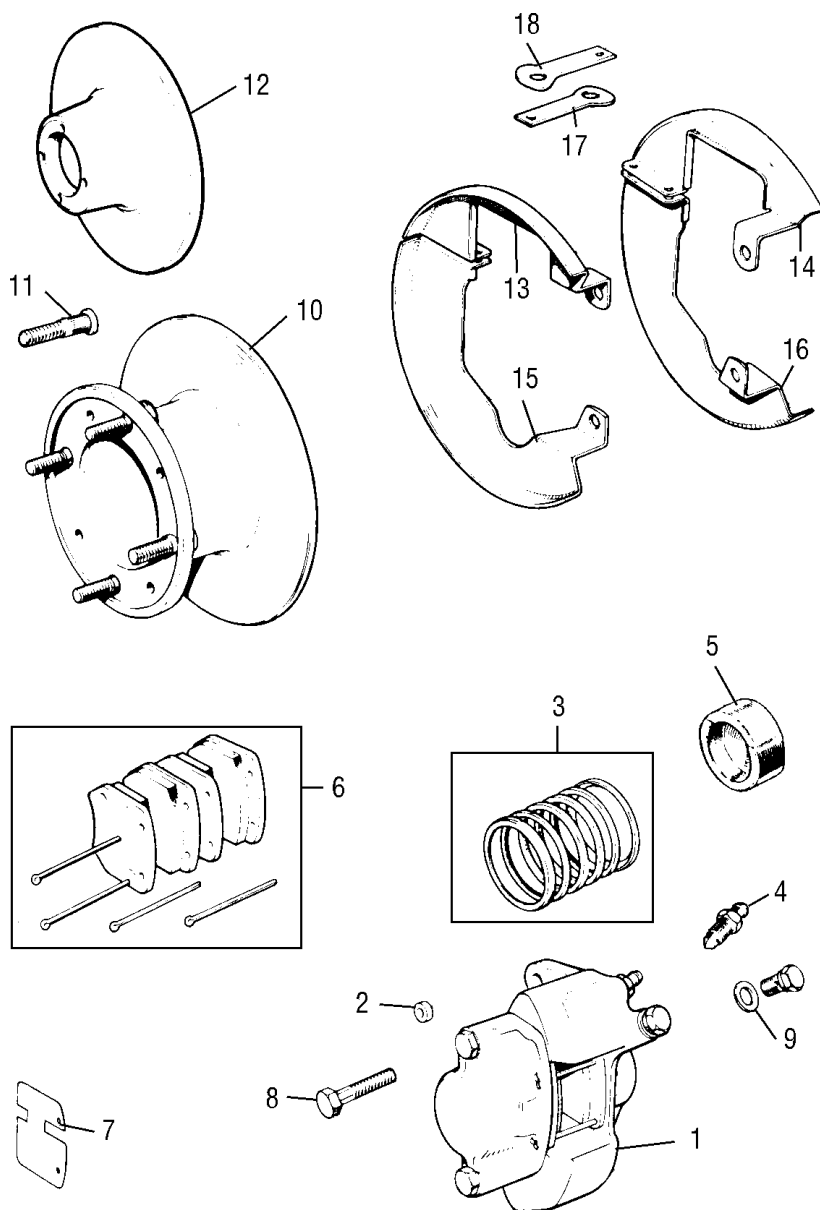


BRAKE SYSTEM

FRONT BRAKES - DISC	2
FRONT BRAKES - DRUM	4
REAR BRAKES	6
MASTER CYLINDERS, PEDALS	8
BRAKE CYLINDER REFERENCE CHART	10
BRAKE PIPES - SINGLE SYSTEM	12
BRAKE PIPES - DIAGONAL SPLIT SYSTEM	14
BRAKE PIPES - DIAGONAL SPLIT RHD	16
BRAKE PIPES - SPLIT FRONT TO REAR	18
BRAKE PIPES - ERA TURBO	20
HANDBRAKE LEVER AND CABLES	22
BRAKE SERVO UNITS	24

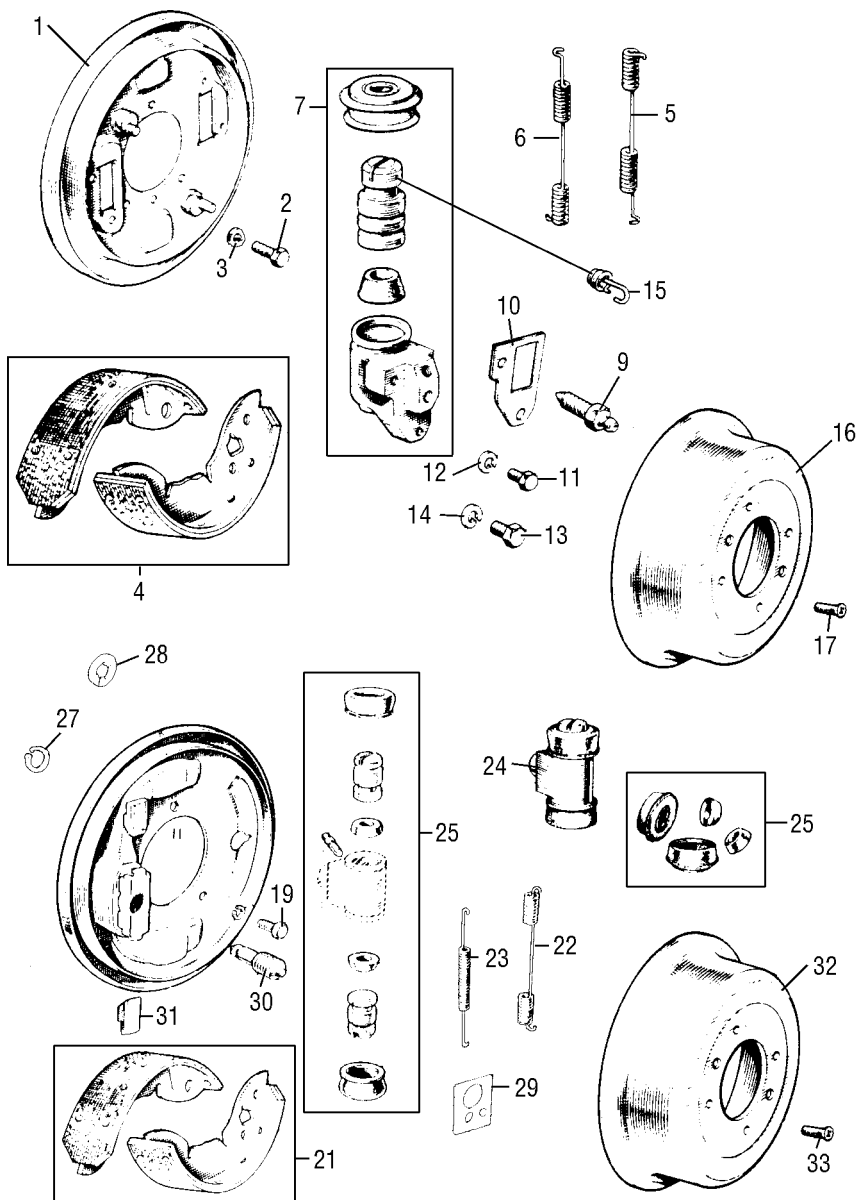
FRONT BRAKES - DISC



FRONT BRAKES (DISC TYPE)

NO.	PART NO.	DESCRIPTION	QTY	REMARKS
1	27H4652	997 Cooper caliper R/H (uses 2.120" wide pad).....CWE	1	Fits 7" disc NLA
1	27H4653	997 Cooper caliper L/H (uses 2.120" wide pad).....CWE	1	Fits 7" disc NLA
1	27H4654	998 Cooper caliper R/H (uses 2.335" wide pad).....CWE	1	Fits 7" disc NLA
1	27H4655	998 Cooper caliper L/H (uses 2.335" wide pad).....CWE	1	Fits 7" wide disc NLA
1	27H4656	'S' and 1275GT caliper R/H, up to 1974	1	Fits 7.5" wide disc
1	27H4657	'S' and 1275GT caliper L/H, up to 1974	1	Fits 7.5" wide disc
1	GBC141	Late 1275GT, all 1984 models on, caliper R/H	1	Fits 8.4" wide disc
1	GBC138	Late 1275GT, all 1984 models on, caliper L/H	1	Fits 8.4" wide disc
1	GBC131	Vented type caliper, Turbo and Metro (4 pot)	1	8.4" vented disc
1	GBC132	Vented type caliper, Turbo and Metro (4 pot)	1	8.4" vented disc
2	17H8764	Seal between caliper halves 7" and 7.5" disc type	2	Cooper and 'S'
2	17H7679	Seal between caliper halves, GBC 138/141	2	8.4" disc
3	8G8587	997/998 caliper piston seal kit	2	Cooper
3	8G8830	Caliper piston seal kit for 27H4656/7	2	'S' 1275GT
3	M2601	Caliper piston seal kit for GBC138/141	2	Late Mini/1275GT
3	GRK5003	Caliper piston seal kit for GBC131/2	2	Turbo and Metro
4	3H2428	Bleed nipple, except Turbo	2	
4	RTC1466C	Bleed nipple, Turbo and Metro	A/R	
5	17H7913	Caliper piston 997/998 Cooper for 7" disc	4	1.618" diameter
5	17H8626	Caliper piston Cooper 'S' for 7.5" disc	4	1.715" diameter
5	SAAS1021	Caliper piston Metro/Turbo Mini	8	1.414" diameter
5	17H7960	Caliper piston for 8.4" disc (caliper GBC138/141)	4	2.0" diameter
6	BD20	997cc pad set less pin	1	2.120" pad width
6	GBP102	998cc pad set less pin	1	2.335" pad width
6	GBP103	Cooper 'S' 1275GT pad set less pin	1	2.865" pad width
6	GBP281	1275GT and all Mini 1984 on (12" wheel)	1	2.920" pad width
6	GBP258	Metro/Mini (4 pot caliper)	1	3.300" pad width
6	GBP90306AF	Turbo Mini and Metro	1	3.300" pad width
	PS610241	Cotter Pin, brake pad retaining	4	
	17H7963	Retainer, brake pads	2	8.4" disc only
7	17H8630	Anti squeal shim..... NLA	4	No longer required
8	53K1048	Caliper to hub bolt.....	4	
9	GHF332	Washer	4	
10	21A1265	Brake disc, Cooper S, 7.5" diameter	2	
10	BTA193	Brake disc, 997/998 Cooper, 7" diameter	2	No longer available
11	21A2064	Wheel stud	8	Not 8.4" disc
11	21A2064L	Wheel stud (.500" longer)	8	Not 8.4" disc
12	21A2612	Brake disc 8.4" diameter	2	For 12" wheels
12	GBD496	Vented disc 8.4" diameter-	2	Turbo vented
13	21A1273	R/H top disc cover 7.5" disc only	1	All 'S' and early GT
14	21A1274	L/H top disc cover 7.5" disc only	1	All 'S' and early GT
15	21A1271	R/H lower disc cover 7.5" disc only	1	All 'S' and early GT
16	21A1272	L/H lower disc 7.5" disc only	1	All 'S' and early GT
13	21A2613	R/H top disc cover 8.4" disc only	1	
14	21A2617	L/H top disc cover 8.4" disc only	1	Need slight
15	21A2614	R/H lower disc cover 8.4" disc only	1	modification when
16	21A2618	L/H lower disc cover 8.4" disc only	1	used for vented disc
17	BTA1208	R/H support bracket	1	
18	BTA1209	L/H support bracket	1	
19	PMZ307	Screw to join disc shields	4	Not shown
20	GHF206	Nut for PMZ307	4	

FRONT BRAKES - DRUM



FRONT DRUM BRAKES 1964-1984 - ALL HYDROLASTIC AND DRY SUSPENSION 1964 ON

NO.	PART NO.	DESCRIPTION (KNOWN AS TWIN LEADING SHOES)	QTY	REMARKS
1	37H2013	R/H backplate	1	MK2 on
1	37H2014	L/H backplate	1	MK2 on
2	SH605051	Backplate to hub bolt	6	
3	GHF332	Spring washer	6	
4	GBS102MS	Brake shoe set (4 shoes)	1	1.5" wide
5	AAU8243	Brake shoe spring	2	Was 17H8184
6	AAU8243	Brake shoe spring	2	Was 17H8185
5&6	BRAKE01	Brake shoe spring set	1	
7	GWC102	R/H wheel cylinder for 17H8145 backplate .80" bore	2	NLA
7	GWC103	L/H wheel cylinder for 17H8159 backplate .80" bore	2	NLA
7	GWC104MS	R/H wheel cylinder for 37H2013 backplate .80" bore	2	
7	GWC105MS	L/H wheel cylinder fro 37H2014 backplate .80" bore	2	
8	8G8816	Wheel cylinder repair kit for GWC102/3	4	.8125" bore size
9	BHM7068	Wheel cylinder repair kit for GWC126/7	4	.9375" bore size
9	3H2428	Bleed nipple	2	
10	37H3833	Gasket for cylinder to backplate	4	
11	7H7250	Wheel cylinder to backplate small bolt	4	Was 7H7520
12	GHF331	Spring washer	4	
13	HZS505	Wheel cylinder to backplate large bolt	4	
14	GHF332	Spring washer	4	
15	27H3753	Cylinder to shoe spring on GWC126/7 only	4	Must be fitted
16	21A22	Brake drum	2	
17	CMZ407	Brake drum screw	4	

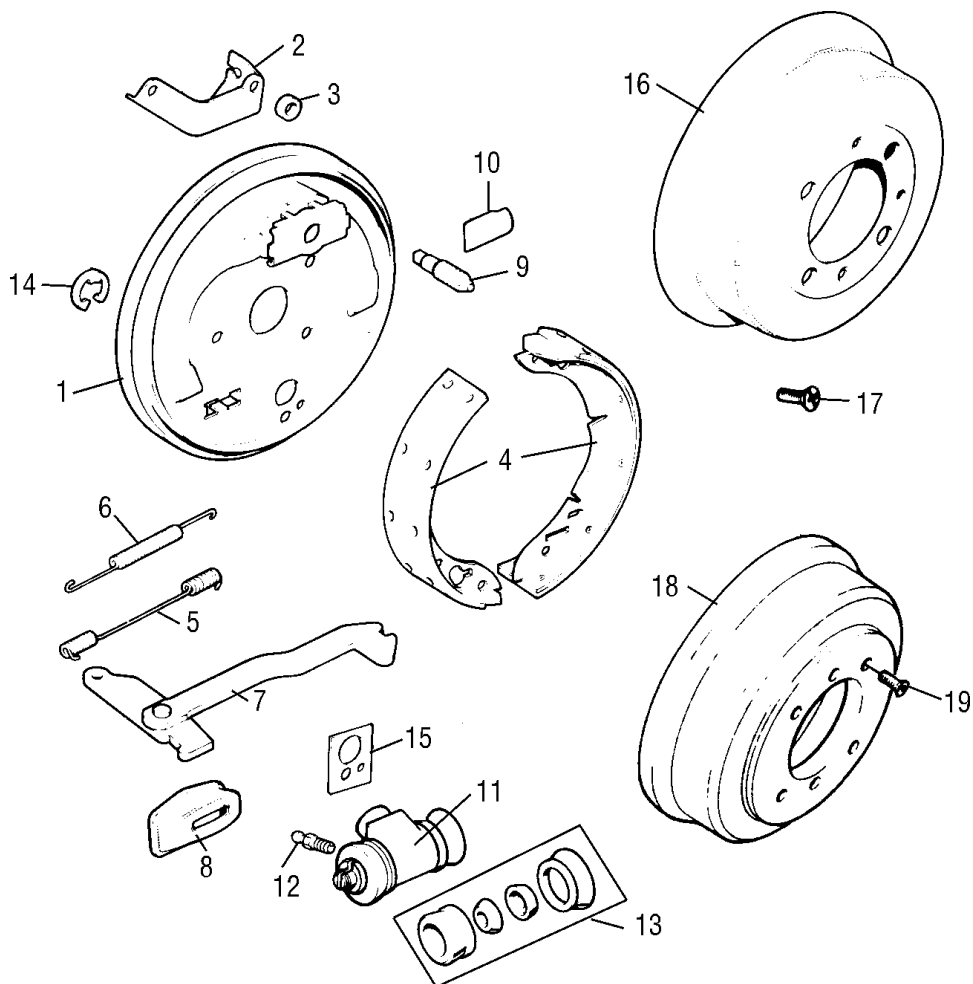
9

FRONT DRUM BRAKES (SINGLE CYLINDER) TO FEBRUARY 1964

BRAKES FITTED ON SALOONS UNTIL INTRODUCTION OF HYDROLASTIC SUSPENSION

NO.	PART NO.	DESCRIPTION (KNOWN AS SINGLE LEADING SHOE)	QTY	REMARKS
18	17H7615	R/H backplate, stamping number 101601RH	1	Use 17H2476
18	17H7616	L/H backplate, stamping number 101602LH	1	Use 17H2477
18	17H2476	R/H backplate, stamping number 113513	1	CWE
18	17H2477	L/H backplate, stamping number 113514	1	CWE
19	SH605051	Backplate to hub bolt	6	
20	GHF332	Spring washer	6	
21	GBS101MS	Brake shoe set (4 shoes)	1	1.25" wide
21	GBS701	Brake shoes set, Unipart manufacture (4 shoes)	1	1.25" wide
22	17H8092	Brake shoe spring, cylinder end	2	
23	17H7621	Brake shoe spring, adjuster end	2	
24	GWC101	Wheel cylinder	2	CWE
25	8G8254	Wheel cylinder repair kit for GWC101 . 15/16"	2	new BL#GRK2013
26	513118	Bleed screw was 17H7623	2	
27	17H7622	Wheel cylinder to back plate locating spring	2	Use 17H7949
28	17H7949	Wheel cylinder to back plate clip	2	
29	37H4642	Wheel cylinder to plate gasket	2	
30	17H7618	Brake shoe adjuster	2	
31	17H7619	Adjuster wedge	4	
32	21A22	Brake drum	2	new BL#GDB105
33	CMZ407	Brake drum screw	4	

REAR BRAKES

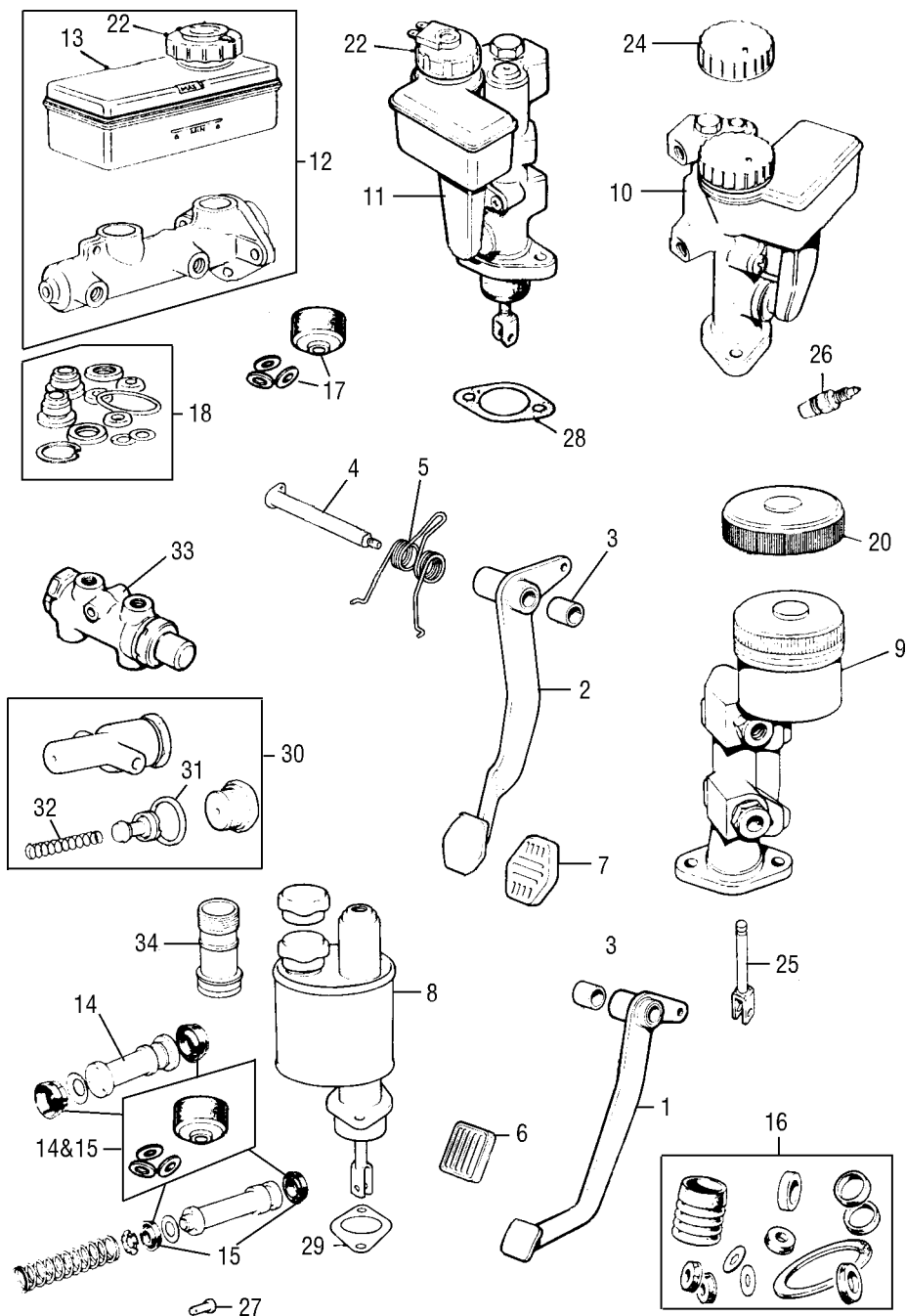


REAR BRAKES SINGLE LINE AND TANDEM

NO.	PART NO.	DESCRIPTION	QTY	REMARKS
1	21A1058	Back plate R/H	1	NLA
1	21A1060	Back plate L/H	1	NLA
1	17H8075	Back plate R/H	1	For GWC1101/1129
1	17H8076	Back plate L/H	1	For GWC1101/1129
2	21A1669	Handbrake cable bracket R/H	1	
2	21A1670	Handbrake cable bracket L/H	1	
3	53K3437	Packing washer	4	
4	GBS101MS	Rear brake shoe set (4 shoes)	1	1.25" wide
4	GBS701	Genuine rear brake shoe set	1	1.25" wide
5	17H8092	Return spring, cylinder end	2	
6	17H7621	Return spring, adjuster end	2	
7	AAU4936	Brake lever arm R/H, NLA	1	Use SMN10005
7	AAU4937	Brake lever arm L/H, CWE	1	Use SMN10005
7	SMN10005	Brake lever kit (includes R/H and L/H)	1 pr	
8	17H7612	Brake lever gaiter	2	
9	17H7619	Tappet type adjuster screw	2	
10	17H7618	Wedge	4	
9&10	17H7620	Kit of one screw and two wedges	2	
11	GWC1129	Wheel cylinder late 11/16"	2	513118 bleed screw
11	GWC1134	Whl cyl, was 37H8074 no locating pin (Japan/Norway only) ..	2	3H2428 bleed screw
11	GWC1101	Wheel cylinder up to 1967 5/8"	2	513118 bleed screw
11	GWC1102	Wheel cylinder 1967-on 3/4"	2	513118 bleed screw
12	513118	Bleed screw	2	
12	3H2428	Bleed screw for GWC1131/4	2	
13	BHM7054	Wheel cylinder repair kit for GWC1129 11/16"	2	new BL#GRK2004
13	8G8801	Wheel cylinder repair kit for GWC1101 5/8"	2	
13	8G8797	Wheel cylinder repair kit for GWC1102 3/4"	2	new BL#GRK2014
14	17H7949	Wheel cylinder locating clip	2	
15	37H4642	Wheel cylinder to backplate gasket	2	
16	21A22	Brake drum	2	
17	CMZ407	Brake drum screw for 21A22	4	
18	21A1279	Brake drum (1" wider than 21A22)	2	'S' 1275GT and 1984 on
19	SF604121	Brake drum screw for 21A1279	4	

FOR WHEEL CYLINDER FITMENT SEE CHART WITH MASTER CYLINDER AND BRAKE LINE TYPE.

MASTER CYLINDERS, PEDALS



BRAKE PEDAL AND MASTER CYLINDERS

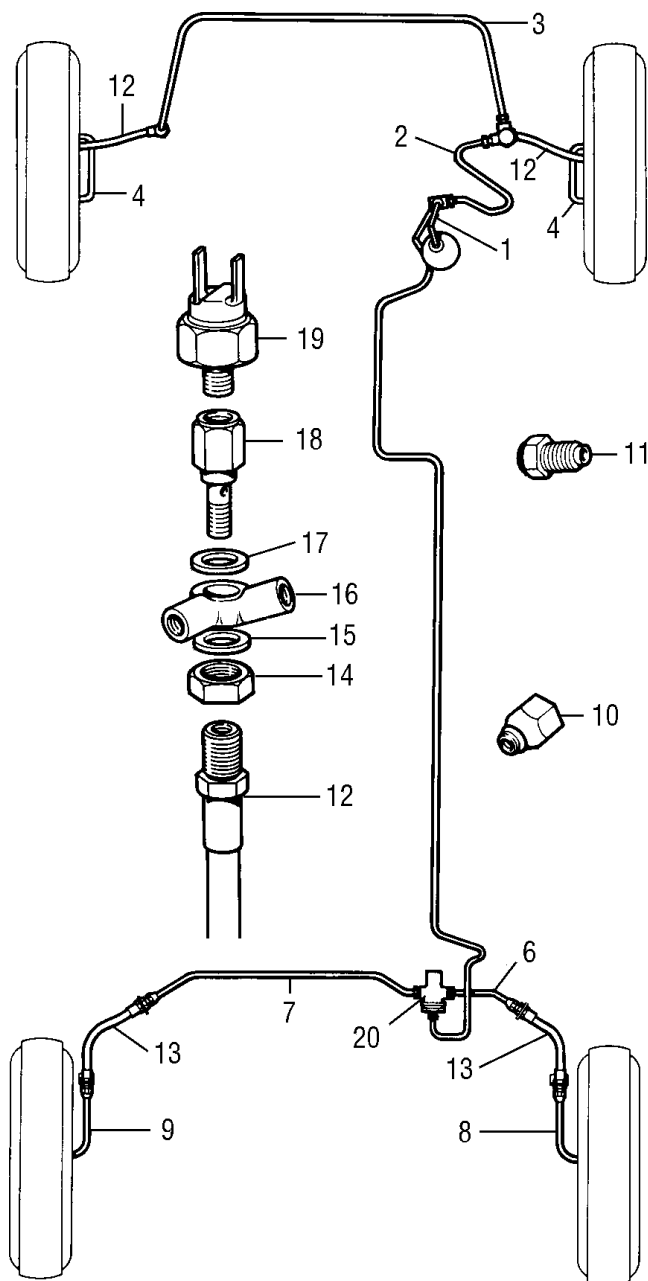
NO.	PART NO.	DESCRIPTION	QTY	REMARKS
1	21A1065	Brake pedal R/H/D pre 1976	1	NLA
1	21A1066	Brake pedal L/H/D pre 1976	1	NLA
2	NAM3112	Brake pedal R/H/D 1976 on	1	
2	NAM3111	Brake pedal L/H/D 1976 on	1	
3	2A3034	Brake pedal bush	1	
4	2A5880	Shaft for brake and clutch pedal	1	
5	2A5652	Pedal return spring manual only	1	
6	GPR104	Pedal pad pre 1976	1	
7	GPR107	Pedal pad 1976 to 1990	1	
7	SZU10001	Pedal pad 1990 on	1	
7	GMC105	Brake master cylinder, .625" bore	1	
8	GMC153	Brake master cylinder, .75" bore	1	NLA
8	GMC171	Brake master cylinder, .70" bore	1	Plastic reservoir
8	GMC172	Brake master cylinder, .70" large reservoir	1	Cooper 'S' - NLA
9	GMC159	Brake m/cylinder, .70" bore, round reservoir, tandem	1	Front to rear
9	GMC160	Brake master cylinder, .70" bore, round reservoir	1	Diagonal split
10	GMC167	Brake m/cyl, failure switch on body, square reservoir	1	Diagonal split
10	GMC173/198	Brake m/cyl, failure switch on body, use GMC227	1	Front to rear 1980-85
11	GMC192/195	Brake m/cylinder switch on cap, use GMC227	1	Front to rear 1980-85
11	GMC227	Brake m/cyl, failure switch on cap, November 1985 on	1	Yellow identity band
12	GMC242	Brake master cylinder for built in servo	1	
13	GRK6010	Reservoir for GMC242	1	
14	8G8258	Repair kit for GMC153	1	
14	8G8689	Repair kit for GMC171/2, one end cap seal, one ring seal	1	.70"
14	SSB795	Repair kit for GMC105	1	.625"
15	GRK1006	Repair kit for GMC171/2 with two ring seals	1	
16	LSSB927	Repair kit for GMC159/160	1	
17	GRK1002	Repair kit for GMC167 metric thread master cylinder	1	also M1401
17	GRK1016	Repair kit for GMC173/195/198/192 (Metric union)	1	Pre yellow band
17	GRK1035	Repair kit for GMC227 (yellow identity band) (Metric union)	1	
18	GRK1032	Repair kit for GMC242 (Metric union)	1	
19	BAU5654	R/H/D brake pipe kit to convert to GMC227 when	1	When fitting GMC227
19	BAU5655	L/H/D brake pipe kit GMC173/195/198/192 was fitted	1	12mm lower union
20	AAU3815	Filler cap for GMC159/160	1	NLA
21	513123A	Filler cap for GMC153/171/172	1	
22	AEU1796	Filler cap with failure switch	1	
23	GRK6009	Cap and float switch for GMC242	1	
24	AAU8240	Filler cap and seal GMC167/173	1	
25	37H2769	Push rod for GMC159/160	1	
25	BAU1273	Push rod for GMC173/192/195/198	1	
26	AAU1752A	Brake failure switch on master cylinder body	1	
27	CLZ512	Clevis pin, pedal to cylinder	1	
28	31G840	Gasket under dual master cylinder	1	
29	31G279	Gasket under single line master cylinder	1	
30	13H7557	Inertia valve, L/H/D only 1969 to 1974	1	
30	21A2031	Regulator valve single line MK3 Mini 850/998 only	1	
30	21A1774	Regulator valve single line, MK1/2 plus all Cooper 'S'	1	
31	GRK6002	Repair kit for regulator valve	1	
32	37H2009	Regulator spring for 21A2031	1	
32	27H6620	Regulator spring for 21A1774	1	
33	FAM7821	PDWA valve fitted on bulkhead 1978 on	1	Tandem front to rear
34	BHA4661	Plastic extension piece, fits to master cylinder	1	Single line

BRAKE CYLINDER REFERENCE CHART

Line No.	Description	Chassis number/Year	Master Cyl.	Bore Size
1	Dry suspension Mini 1959 to chassis number	A2S7 359770	GMC153	.75" ➤
2	Dry suspension Mini from chassis number	A2S7 359771	GMC171	.70" ➤
3	All hydroelastic Mini MKI Minis from September 1964 on		GMC171	.70" ➤
4	MKII Mini and derivatives	to C-A2S7 2332A	GMC171	.70" ➤
5	MKII Mini and derivatives	C-A2S7 2333A on	GMC171	.70" ➤
6	MKIII Mini October 1968 on and derivatives, single line to 1977		GMC171	.70" ➤
7	997 Cooper to chassis number	(Austin) C-A2S7 213829		.75" ➤
8		(Morris) K-A2S4 213550	GMC153	➤
9	997 Cooper	(Austin) C-A2S7 213829-382831		.70" ➤
		(Morris) M-AS4 213551-382183	GMC171	➤
10	997 Cooper dry & Hydroelastic	(Austin) C-A2S7 382832 on	GMC171	.70" ➤
		(Morris) K-A2S4 382184 on		
11	Cooper 'S' MKI with servo 21A1293		GMC172	.70" ➤
12	Cooper 'S' MKII with servo 21A1293		GMC172	.70" ➤
13	Cooper 'S' MKIII, 1275GT with servo 13H7939, 10" wheels		GMC172	.70" ➤
14	1275GT Single line brakes	19416-21569A (1974-76)	GMC172	.70" ➤
15	1275GT Diagonal split brake system	19416-21569 on (1974-76)	GMC160	.70" ➤
16	1275GT Single line brakes	21570A on (1976-77)	GMC172	.70" ➤
17	1275GT Diagonal split brake system (metric fittings)	30001 on (1977-78)	GMC167	.70" ➤
18	1275GT Front to rear tandem brakes (metric fittings)	1978 on	GMC227	.75" ➤
19	850/998 Diagonal split (not UK)	Europe 1976-77	GMC160	.70" ➤
20		Japan/Norway	GMC160	.70" ➤
21	850/998/1100 Front to rear (Benelux countries) pre 1975 (Belgium built) Also fitted with 13H7757 inertia valve		GMC159	.70" ➤
22	850/998 Diagonal split except van/pickup	1977-78 (1976-79 Europe)	GMC167	.70" ➤
23	850/998 Front to rear	October 1978 on (1980-84 Europe)	GMC227	.75" ➤
24	Mini van/pickup diagonal split (Metric fittings)	1977 on	GMC167	.70" ➤
25	998 Mini front to rear brake system (Metric fittings)	1984 on	GMC227	.75" ➤
26	Innocenti (1275GT not UK) front to rear, 10" wheels w/AXE244 servo Plus Cooper 'S' MKIII export with 13H7757 inertia valve		GMC159	.70" ➤
27	998/1300 Latest 1990 Mini with built in servo GSM119		GMC242	1.125" ➤
28	ERA Turbo with built in servo GSM119		GMC242	1.125" ➤

Line No.	Front caliper or cylinder	Bore/disc	Rear wheel cylinder	Bore cast size	No.	Regulator valve
1	GWC101	.9375"	GWC1102	.750"	12	21A11774
2	GWC101	.9375"	GWC1101	.625"	10	21A11774
3	GWC102/3	.800"	GWC1101	.625"	10	21A11774
4	GWC126/7	.9375"	GWC1102	.75"	12	21A11774
5	GWC126/7	.9375"	GWC1102	.75"	12	21A11774
6	GWC126/7	.9375"	GWC1102	.75"	12	21A11774
7	27H4652	7" disc	GWC1102	.75"	12	21A11774
8	27H4653					
9	27H4652	7" disc	GWC1102	.75"	12	21A11774
	27H4653	GBP101 pad				
10	27H4654	7" disc	GWC1101	.625"	10	21A11774
	27H4655	GBP102 pad				
11	27H4656/7	7.5" disc	GWC1101	.625"	10	21A11774
12	27H4656/7	7.5" disc	GWC1102	.75"	12	21A11774
13	27H4656/7	7.5" disc	GWC1101	.625"	10	21A11774
14	GBC138/141	8.4" disc	GWC1129	.6875"	11	21A11774
15	GBC138/141	8.4" disc	GWC1129	.6875"	11	None
16	GBC138/141	8.4" disc	GWC1126	.500"	8	21A11774
17	GBC138/141	8.4" disc	GWC1126	.500"	8	None
18	GBC138/141	8.4" disc	GWC1102	.750"	12	FAM7821
19	GWC126/7	.9375"	GWC1126	.500"	8	4 way switch,
20	GWC126/7	.9375"	GWC1134	.5625"	6	13H5905
21	GWC26/7	.9375"	GWC1102	.750"	12	4 way switch,
						13H5905
22	GWC126/7	.9375"	GWC1131	.5625"	9	None
23	GWC126/7	.9375"	GWC1102	.750"	12	FAM7821
24	GWC126/7	.9375"	GWC1102	.750"	12	None
25	GBC138/141	8.4" disc	GWC1102	.750"	12	FAM7821
26	27H4656/7	7.5" disc	GWC1129	.6875"	11	4 way switch,
						13H5905
27	GBC138/141	8.4" disc	GWC1102	.750"	12	FAM7821
28	GBC131/2	8.4" vented	GWC1131	.5625"	9	None

BRAKE PIPES - SINGLE SYSTEM



SINGLE LINE BRAKE PIPES

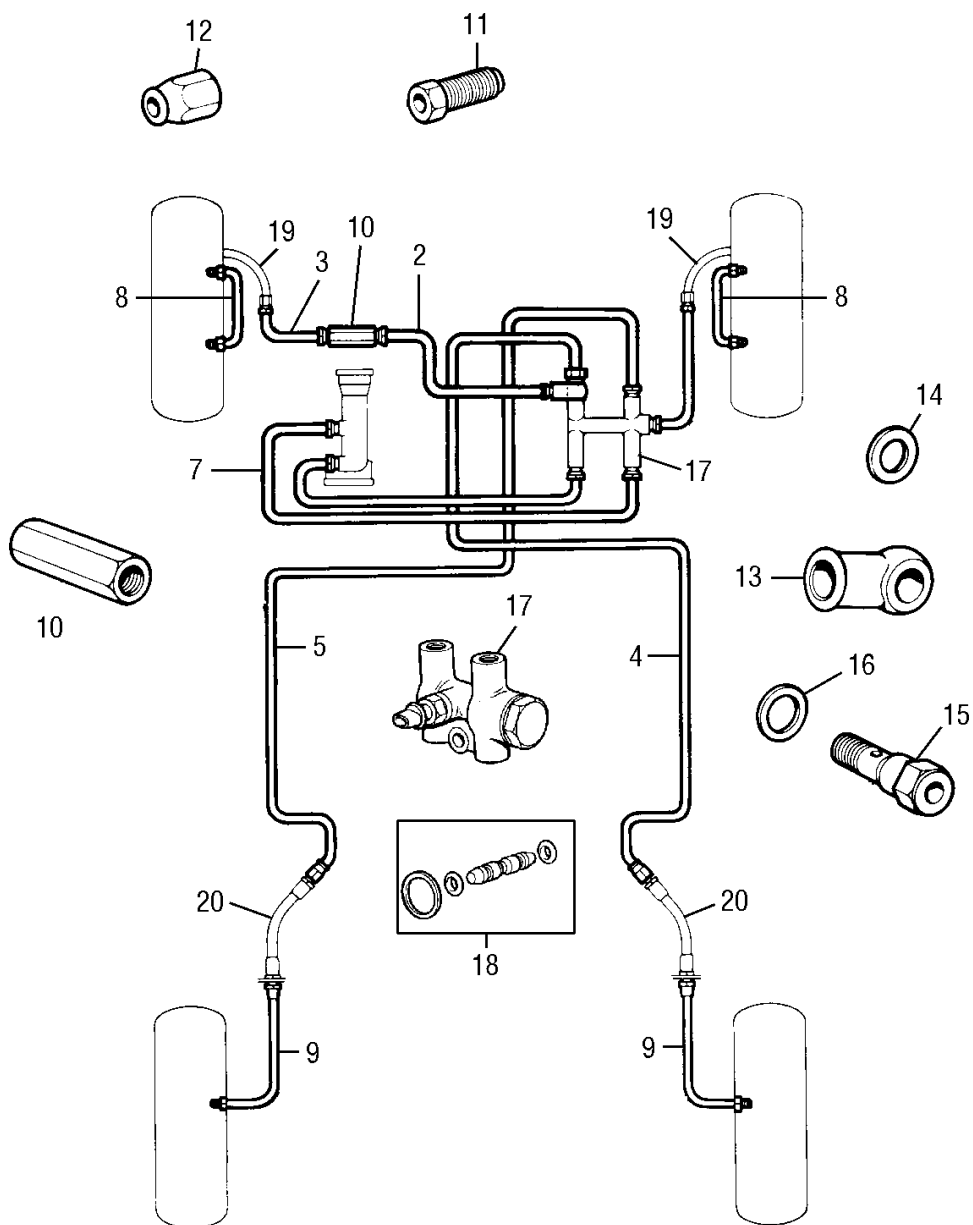
NO.	PART NO.	DESCRIPTION	QTY	REMARKS
1	SPA14	Master cylinder to 3 way connection R/H/D 13"	1	
1	SPA32	Master cylinder to 3 way connection L/H/D 32"	1	
2	SPA18	3 way connection to R/H front hose	1	ACB8748
3	SPA44	R/H front to L/H front HF44, 43"	1	
4	SPA9	Connecting pipe, cylinder to cylinder	1	HF10
5	SPA101	3 way to regulator valve, saloon	1	HF101
5	SPA104	3 way to regulator valve, van	1	HF105
6	SPB6	Regulator valve to R/H rear hose, dry suspension	1	HD6
6	SPB8	Regulator valve to R/H rear hose, hydrolastic suspension	1	HD8
7	SPB24	Regulator valve to L/H rear hose, dry suspension	1	HD24
7	SPB26	Regulator valve to L/H rear hose, hydrolastic suspension	1	HD26
8	SPB10	R/H rear hose to wheel cylinder, dry suspension	1	HD10
8	21A1621	R/H rear hose to wheel cylinder, hydrolastic suspension	1	HD8
9	21A222	L/H rear hose to wheel cylinder, dry suspension	1	HD10
9	SPB8	L/H rear hose to wheel cylinder, hydrolastic suspension	1	HD8
10	11D5050	Brake pipe female union UNF thread	A/R	
11	3H2249	Brake pipe male union UNF thread	A/R	
12	GBH174	Front brake hose	2	Discs
12	GBH170	Front brake hose	2	Drum brakes
13	GBH173	Rear brake hose	2	
14	21A228	Nut for locking hose R/H	1	
14	2K8686	Nut for locking hose L/H	1	
15	233220A	Hose to banjo washer (also on front brake hose)	A/R	
16	11D5263	2 way 90° union UNF thread	1	
17	3H550	Gasket washer	1	
18	7H7995	Banjo bolt to accept switch	1	
19	C16062	Brake light switch	1	
20	21A2031	Regulator valve, 850/998 only MK3	1	
20	21A1774	Regulator valve, MK1/2 plus all Cooper 'S'	1	
	GRK6002	Repair kit for 21A1774 and 21A2031	1	
	GB5001	Brake pipe kit, dry suspension without servo RHD	1	
	GL5001	Brake pipe kit, dry suspension without servo LHD	1	
	GL5002	Brake pipe kit, dry suspension with servo LHD	1	
	GB5002	Brake pipe kit, dry suspension with servo RHD	1	
	GB5001H	Brake pipe kit, hydrolastic suspension without servo	1	
	GB5002H	Brake pipe kit, hydrolastic suspension with servo	1	
If servo is fitted:-				
	SPA24	Servo to 3 way 24"	1	R/H/D
	SPA32	Master to servo 32"	1	R/H/D
	SPA44	Master to servo 44"	1	L/H/D

HF & SPA prefix denotes male unions both end.

HD & SPB prefix denotes one male union end and one female union end.

Number after prefix denotes length in inches, ie. SPA10 = male unions at both ends 10" long.

BRAKE PIPES - DIAGONAL SPLIT SYSTEM



DIAGONAL SPLIT SYSTEM WITH 4 WAY FAILURE SWITCH

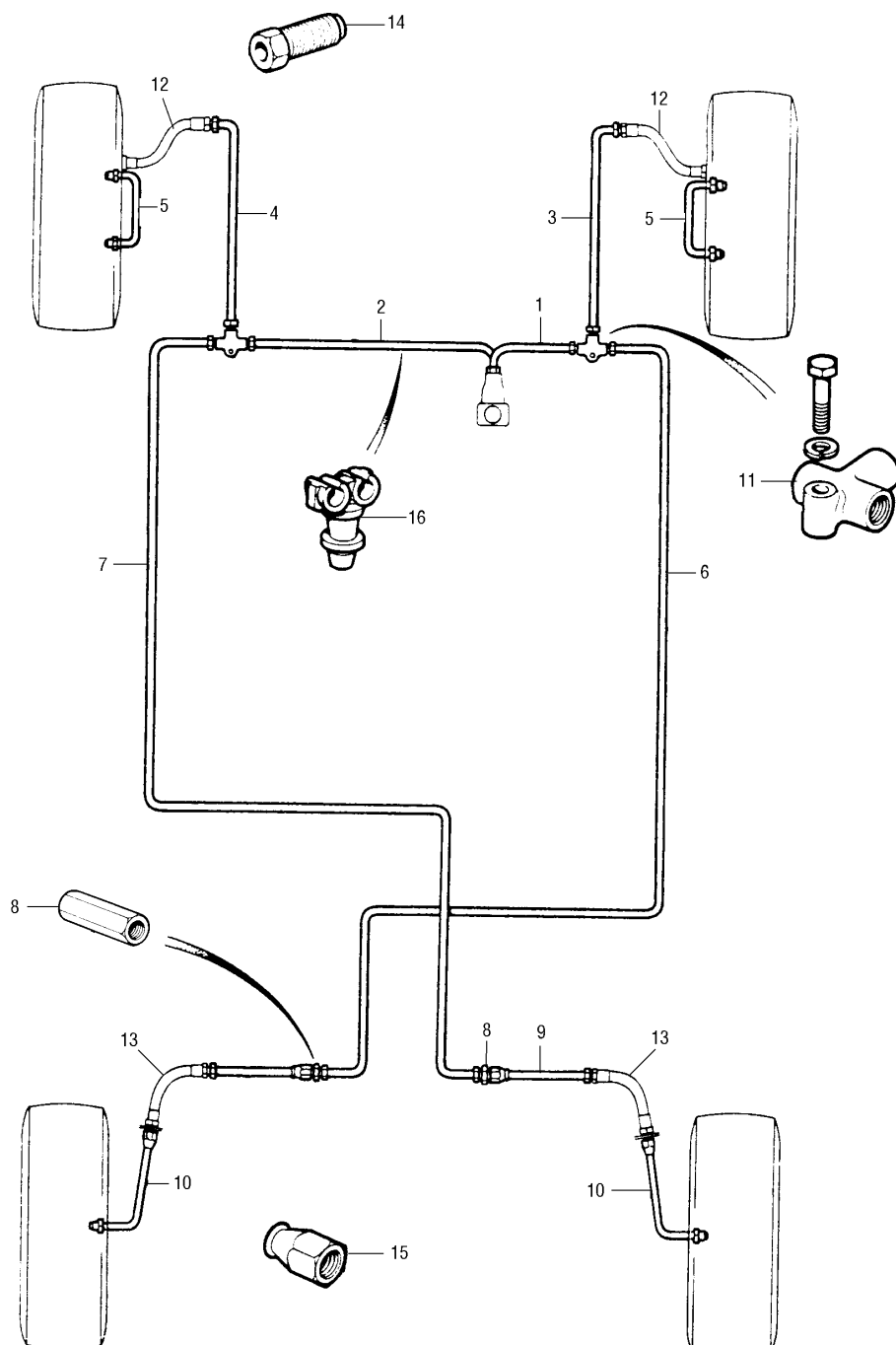
NO.	PART NO.	DESCRIPTION	QTY	REMARKS
1	SPA17	4 way to R/H front hose 16"	1	HF17
2	SPA29	4 way to BCA4002 connector 29"	1	HF28
3	SPA17	073-1100 connector to L/H/F hose 17"	1	HF17
4	SPB96	4 way to R/H rear hose 96" (101" van)	1	HD96
5	SPB116	4 way to L/H rear hose 116" (120" van)	1	HD116
6	SPA30	4 way to master cylinder L/H/D 30"	1	HF30
6	SPA9	4 way to master cylinder R/H/D 8.5"	1	HF9
7	SPA32	4 way to master cylinder L/H/D 32"	1	HF32
7	SPA10	4 way to master cylinder R/H/D 9.5"	1	HF10
8	SPA10	Bridge pipe between wheel cylinders	2	HF10 · Drum brakes only
9	SPB10	Rear hose to wheel cylinder	2	HD10
10	073-1100	Pipe connector UNF thread	1	BCA4002
11	TM606031	Male union UNF thread	A/R	
12	TN606031	Female union UNF thread	A/R	
13	7H7853	Banjo for 4 way failure switch	1	NLA
14	233220	Copper washer	1	
15	21A2518	Banjo bolt for failure switch	1	NLA
16	3H550	Copper washer for 21A2518	1	
17	13H5905	4 way failure switch	1	NLA
18	BAU1704A	Repair kit for 13H5905	1	
19	GBH170	Front brake hose	2	Drum brakes
19	GBH174	Front brake hose	2	Disc brakes
20	GBH173	Rear hose	2	

HF & SPA Denotes male unions at both ends

HD & SPB Denotes one male union end and one female union end



BRAKE PIPES - DIAGONAL SPLIT RHD



DIAGONAL SPLIT R/H/D

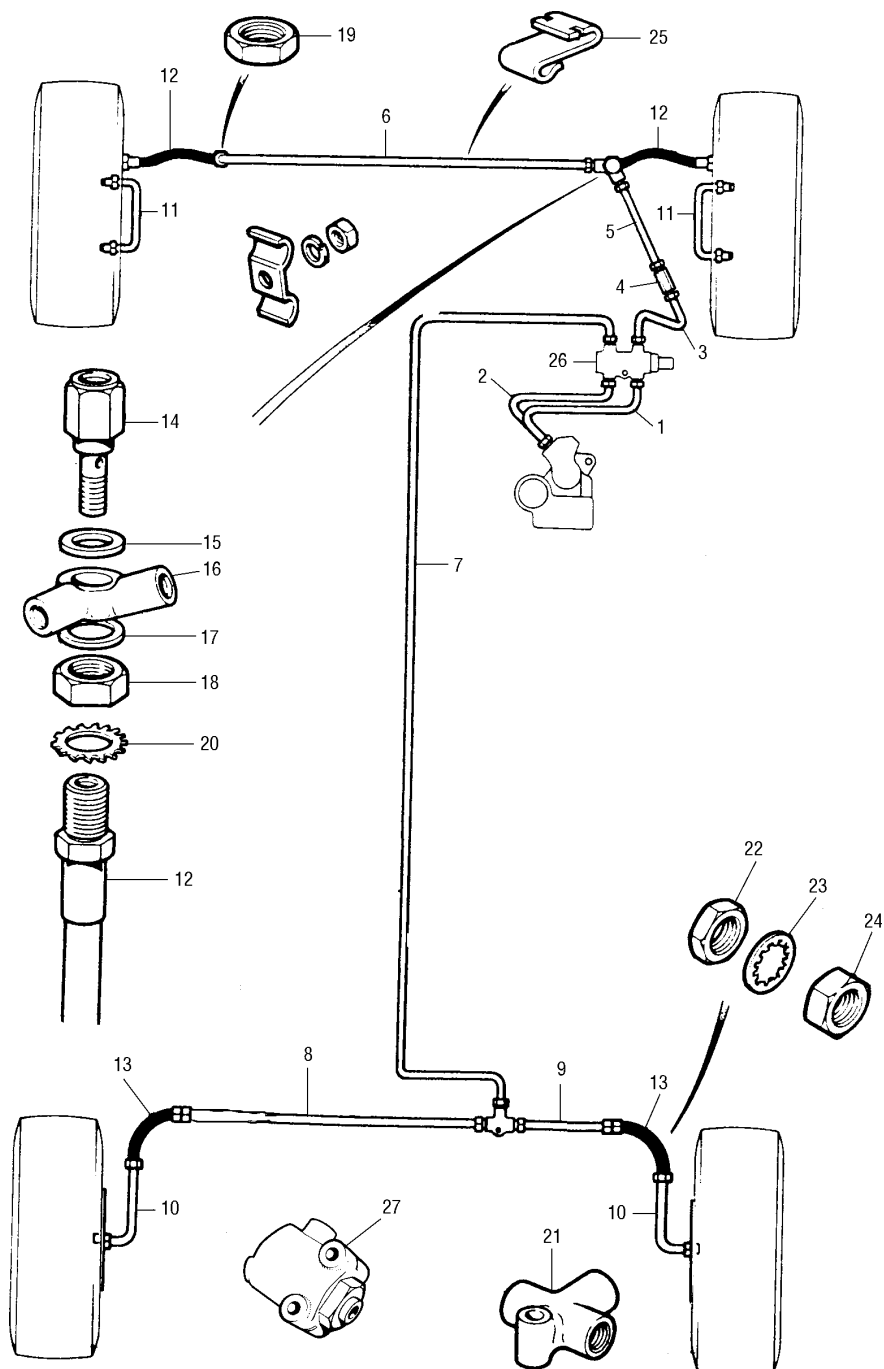
NO.	PART NO.	DESCRIPTION	QTY	REMARKS
1	SPA10	Master cylinder to front 3 way R/H 9.5"	1	
2	SPA32	Master cylinder to front 3 way L/H 32.5"	1	
3	SPA17	R/H 3 way to front R/H hose 16.5"	1	
4	SPA19	L/H 3 way to front L/H hose 18.5"	1	
5	SPA10	Cylinder to cylinder bridge pipe 10"	2	
6	HMV118	R/H 3 way to rear L/H connector 117.5"	1	Saloon
6	HMV122	R/H 3 way to rear L/H connector 121.5"	1	Van
7	HMV114	L/H 3 way to rear R/H connector 113.5"	1	Saloon
7	HMV118	L/H 3 way to rear R/H connector 117.5"	1	Van
8	BMK2466A	Connector tube, metric (delete on new brake pipe kit)	2	
9	HMO8	Connector tube to rear hose 7"	2	
10	SPB10	Wheel cylinder to hose	2	
11	3H2424	3 way connector	2	
12	GBH170	Front brake hose	2	Drum brakes
12	GBH174	Front brake hose	2	Disc brakes
13	GBH173	Rear brake hose	2	
14	TM606031	Male union UNF thread	A/R	
14	TM110051	Male union metric was BHA5234	A/R	
15	TN606031	Female union UNF thread	A/R	
15	TN110051	Female union metric thread was 13H9325	A/R	
16	13H9593	Clip, brake pipe to dash	A/R	
	GB5014	Complete brake pipe kit	1	

CODE PREFIX TO HELP IDENTIFY ENDS ON BRAKE PIPES

SPB	UNF male end and female UNF end
SPA	UNF male end and UNF male end
HMO	Metric male end and UNF female end
HMV	Metric male end and UNF male end
HMV	Male metric and male UNF
HMK	Male metric and male metric
HML	Male metric and female metric
HX	Female UNF and female metric
HMA	Male UNF and female metric
HMO	Metric male and UNF female

The number following the prefix = length in inches, ie. SPA is UNF male both ends and 10" long. For example, if changing pipe number 6 and you are deleting number 8 (BMK2466A connector) you would then require a pipe with one male end and one female end both UNF. This is a SPB type and would need to be the original length of 117.5" plus 1" for the connector, plus 7" for the number 9 pipe, which equals 125.5", therefore, SPA126 which is in the brake pipe kit would service those parts.

BRAKE PIPES - FRONT TO REAR



BRAKE PIPES - FRONT TO REAR

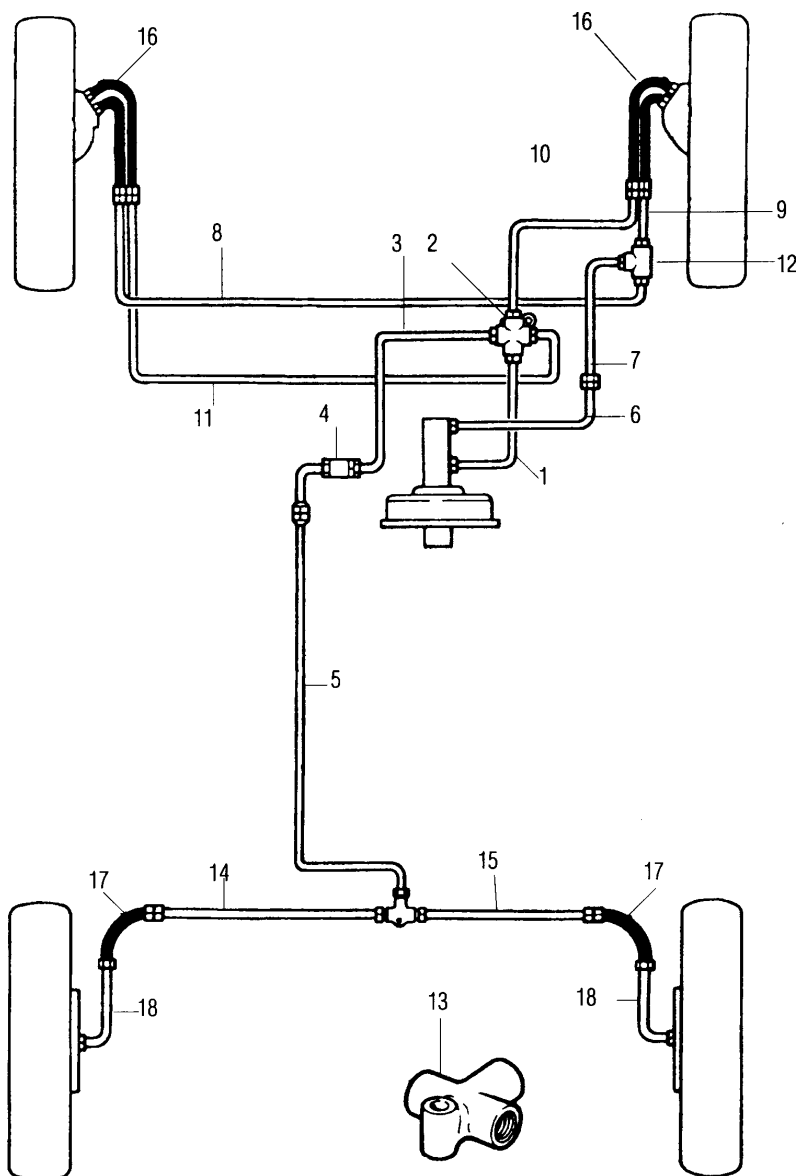
NO.	PART NO.	DESCRIPTION	QTY	REMARKS
1	HMK9	Master cylinder to PDWA (part of BAU5654 kit)	1	No servo
1	HMK11	Master cylinder to PDWA	1	With servo
2	HMK14	Master cylinder to PDWA (part of BAU5654 kit)	1	No servo
2	HMK26	Master cylinder to PDWA	1	With servo
3	HMK8	PDWA to BMK2466A connector	1	
3	HML8	PDWA to number 5 when connector number 4 deleted	1	Servo type
4	BMK2466A	Metric female connector	1	Can be omitted
5	HMV11	Connector to front hose Banjo	1	
5	HMV13	When number 4 connector is deleted use this pipe	1	
6	SPA44	Front hose bridging pipe	1	
7	HMV102	PDWA to rear T piece junction	1	No servo
7	HMV96	PDWA to rear T piece junction	1	With servo
8	SPA26	3 way piece to N/S/R hose	1	
9	SPA7	3 way piece to O/S/R hose	1	
10	SPB10	Wheel cylinder to hose rear	2	
11	SPA10	Front wheel cylinder bridge pipe	2	Drum brakes only
12	GBH170	Front brake hose	2	Drum brakes only
12	GBH174	Front brake hose	2	Disc brakes
13	GBH173	Rear brake hose	2	
14	C5192	Banjo bolt	1	
15	3H550	Gasket washer	1	
16	21A654	Connecting Banjo UNF	1	
17	233220A	Hose to Banjo gasket	1	
18	21A228	Nut for locking hose to subframe R/H	1	
19	2K8686	Nut for locking hose to subframe L/H	1	
20	WE600101	Lockwasher	2	
21	3H2424	3 way union UNF thread	1	
22	NT606041	Hose to radius arm nut	4	
23	GHF323	Washer for NT606041	4	
24	GHF202	Nut	4	
25	11K9181	Clip, pipe to subframe	2	
26	FAM7821	Pressure differential warning activator	1	1978 on
26	13H5905	4 way failure switch	1	Up to 1975 L/H/D
27	13H7757	Inertia valve, MK3 L/H/D where applicable	1	Up to 1975 L/H/D
	GB4999	Brake pipe kit	1	

Code prefix to help identify ends on brake pipes.

Number following prefix = length in inches, ie. HMK9 = metric males union both ends 9" long.

SPA	Male UNF and male UNF ends
SPB	Male UNF and female UNF end
HMK	Male metric and male metric ends
HML	Male metric and female metric ends
HMV	Male metric and male UNF

BRAKE PIPES - ERA TURBO



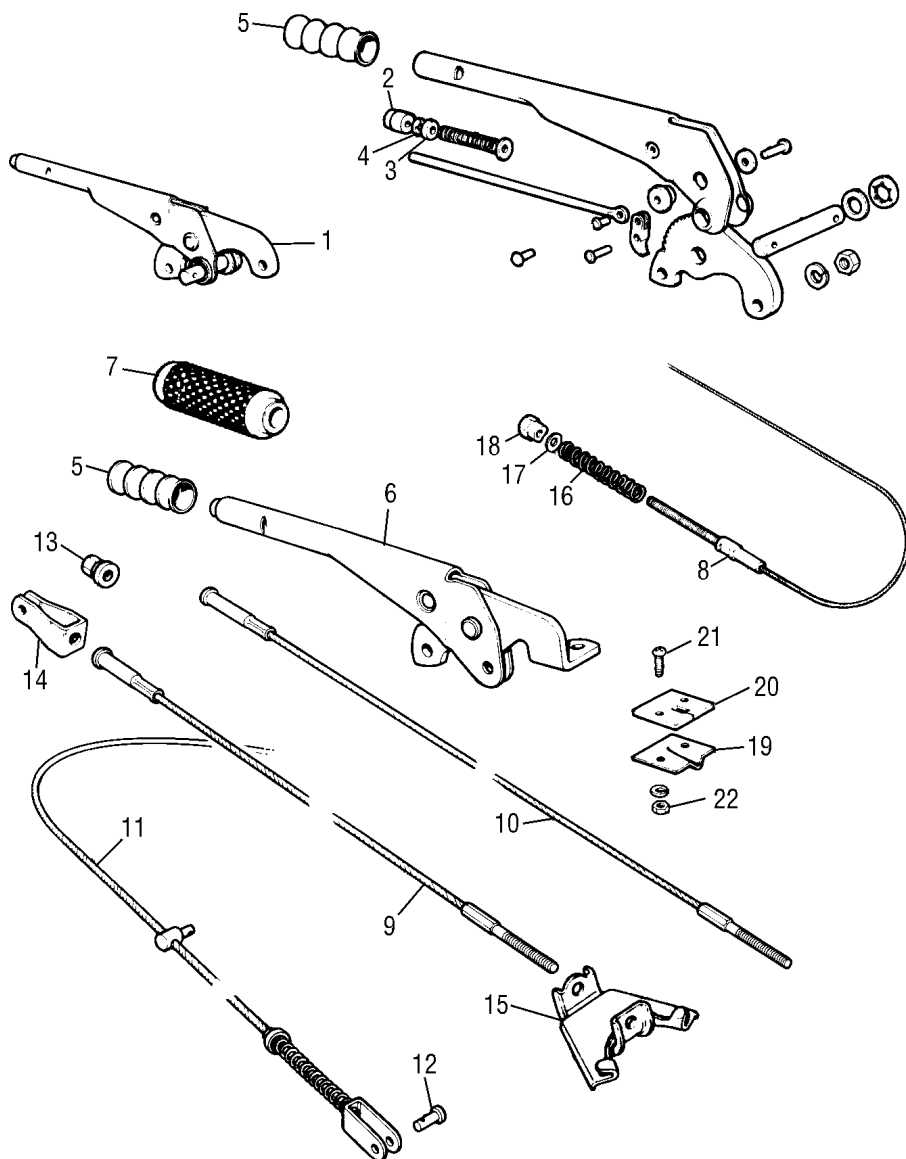
BRAKE PIPES ERA TURBO ONLY

(PARTS TO SPECIAL ORDER ONLY - SUBJECT TO AVAILABILITY)

NO.	PART NO.	DESCRIPTION	QTY	REMARKS
1	HMK36	Servo to 4 way 36" long	1	
2	ERA1171	4 way union	1	
3	ERA1195	4 way to reducer valve	1	
4	ERA1053	Reducing valve (price at 1992 £41.50)	1	
5	ERA1194	Reducing valve to 3 way	1	
6	HMK18	Servo to joiner 17.5" long	1	
7	ERA1056	Joiner to front 3 way	1	
8	ERA1057	3 way to L/H front hose	1	
9	ERA1058	Front 3 way to R/H hose	1	
10	ERA1131	4 way to R/H front hose	1	
11	ERA1132	4 way to L/H front hose	1	
12	ADU9562	3 way connector	1	
13	3H2424	Rear 3 way connector UNF	1	
14	SPA26	Rear 3 way to L/H hose	1	
15	SPA7	Rear 3 way to R/H hose	1	
16	GBH246	Front brake hose	4	
17	GBH173	Rear hose	2	
18	SPB10	Hose to rear cylinder	2	



HANDBRAKE LEVER AND CABLES

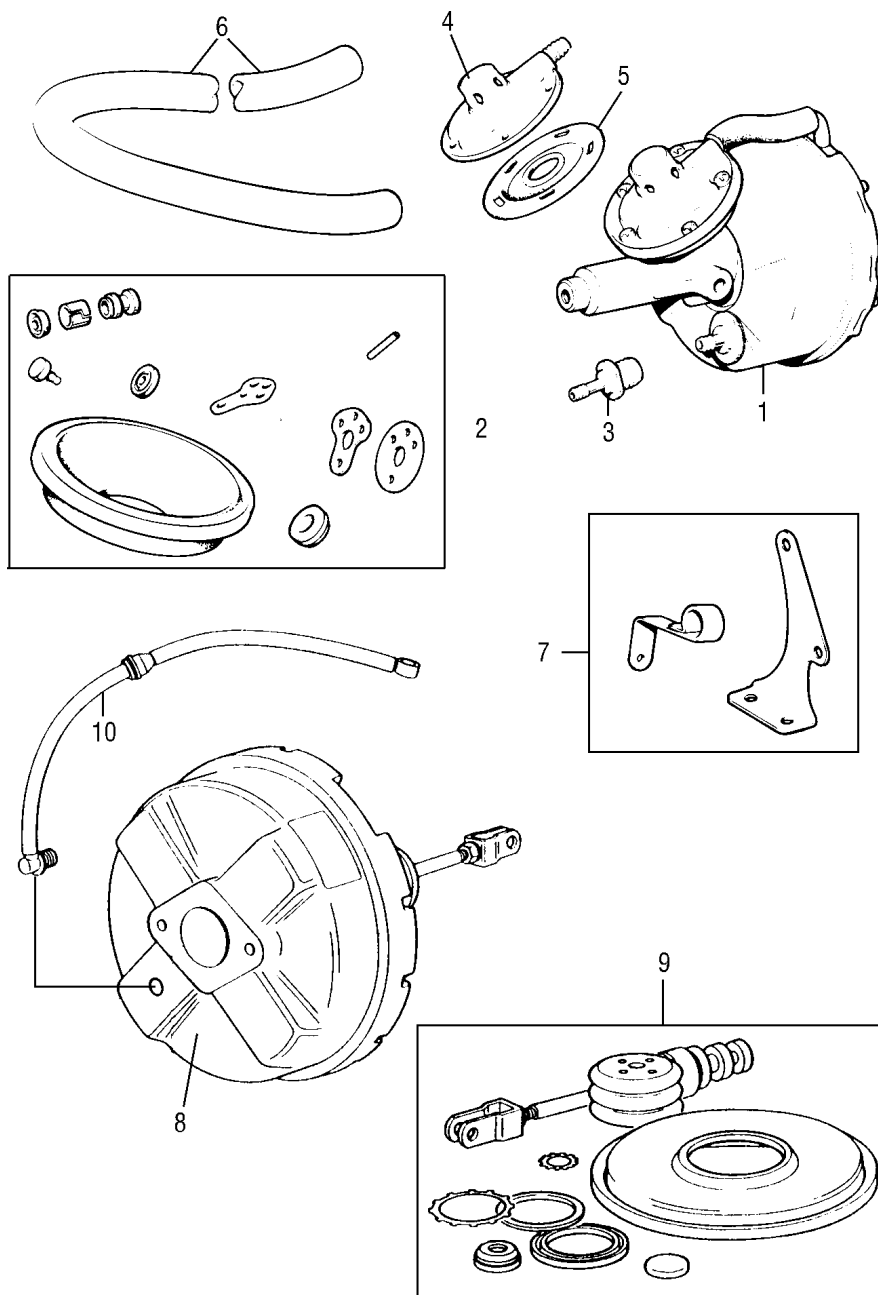


HANDBRAKE LEVER AND CABLES

NO.	PART NO.	DESCRIPTION	QTY	REMARKS
1	FAM9060	Handbrake lever, twin cable	1	To 1976
2	21A907	Release knob for FAM9060 only	1	
3	21G5042	Anti rattle felt washer	1	Special order
4	13H4217	Starlock washer for rod	1	Special order
5	13H5541	Handbrake grip	1	
6	NAM6491	Handbrake lever, single cable	1	1976 on
7	FAM8356	Handbrake grip	1	
8	GVC1022	Handbrake cable, dry suspension saloon	2	When FAM9060 fitted
8	GVC1020	Handbrake cable, van, estate, pick-up	2	When FAM9060 fitted
8	GVC1021	Handbrake cable, hydroelastic suspension	2	When FAM9060 fitted
9	GVC1035	Handbrake cable, front saloon	1	When NAM6491 fitted
10	FAM625	Handbrake front cable van, estate, pick-up	1	When NAM6491 fitted
11	GVC1034	Handbrake rear cable, wheel to wheel	1	When NAM6491 fitted
12	CLZ409	Clevis pin	2	
13	31G5049	Adjusting nut - front cable to fork end	1	When NAM6491 fitted
14	FAM628	Fork end	1	When NAM6491 fitted
15	FAM621	Compensator where cables meet	1	When NAM6491 fitted
16	ACH8508	Adjusting spring	2/1	Quantity reduced NAM6491
17	PWZ204	Washer	2/1	Quantity reduced NAM6491
18	2A5858	Adjusting nut (twin cable only)	2	When NAM9060 fitted
19	ACA5522	Fair lead for cable	2/1	Quantity reduced NAM6491
20	21A385	Sealing pad for fair lead	2/1	Quantity reduced NAM6491
21	SE910201	Screw was PMZ310	4/2	Quantity reduced NAM6491
22	GHF206	Nut for screw	4/2	Quantity reduced NAM6491



BRAKE SERVO UNITS



BRAKE SERVO UNIT REMOTE TYPE

NO.	PART NO.	DESCRIPTION	QTY	REMARKS
1	21A1293	Servo assembly MK1/2 'S'	1	Reproduction
1	13H7939	Servo, MK3 'S'	1	Single line only
	13H7940	Servo, MK3, with brackets and hose kit	1	
2	18G8189	Rebuild kit for 21A1293	1	
2	LSSB1073	Rebuild kit for 13H7939	1	
3	17H2646	Non return valve on 21A1293 servo	1	CWE
3	606030A	Non return valve on 13H7939 servo	1	
4	LSSB1032	Air valve cover and filter	1	NLA
5	517729	Air valve diaphragm for 13H7939 servo	1	
5	17H8834	Air valve diaphragm for 21A1293 servo	1	NLA
6	SPL116	Brake servo hose, per foot	A/R	
7	21A1294	Pair of servo brackets for 21A1293	1	MK1/2
7	21A2254	Pair of servo brackets for 13H7939	1	MK3
	MSSK7	Servo fitting kit for 13H7939 to all Minis	1	NOT SHOWN

BRAKE SERVO (NON REMOTE) ATTACHED TO MASTER CYLINDER 1989 ON

NO.	PART NO.	DESCRIPTION	QTY	REMARKS
8	GSM119	Servo	1	
9	GSM120	Repair kit	1	
10	NAM8568	Pipe with return valve	1	
10	SQB10036	Pipe with return valve	1	Fuel injected

GUIDE TO TYPE OF SERVO AND KIT REQUIRED

18G8189	7" diaphragm with 0.5625" central hole	1	For 21A1293
18G8938	6.75" diaphragm with 2.4" central hole	1	For 13H7939